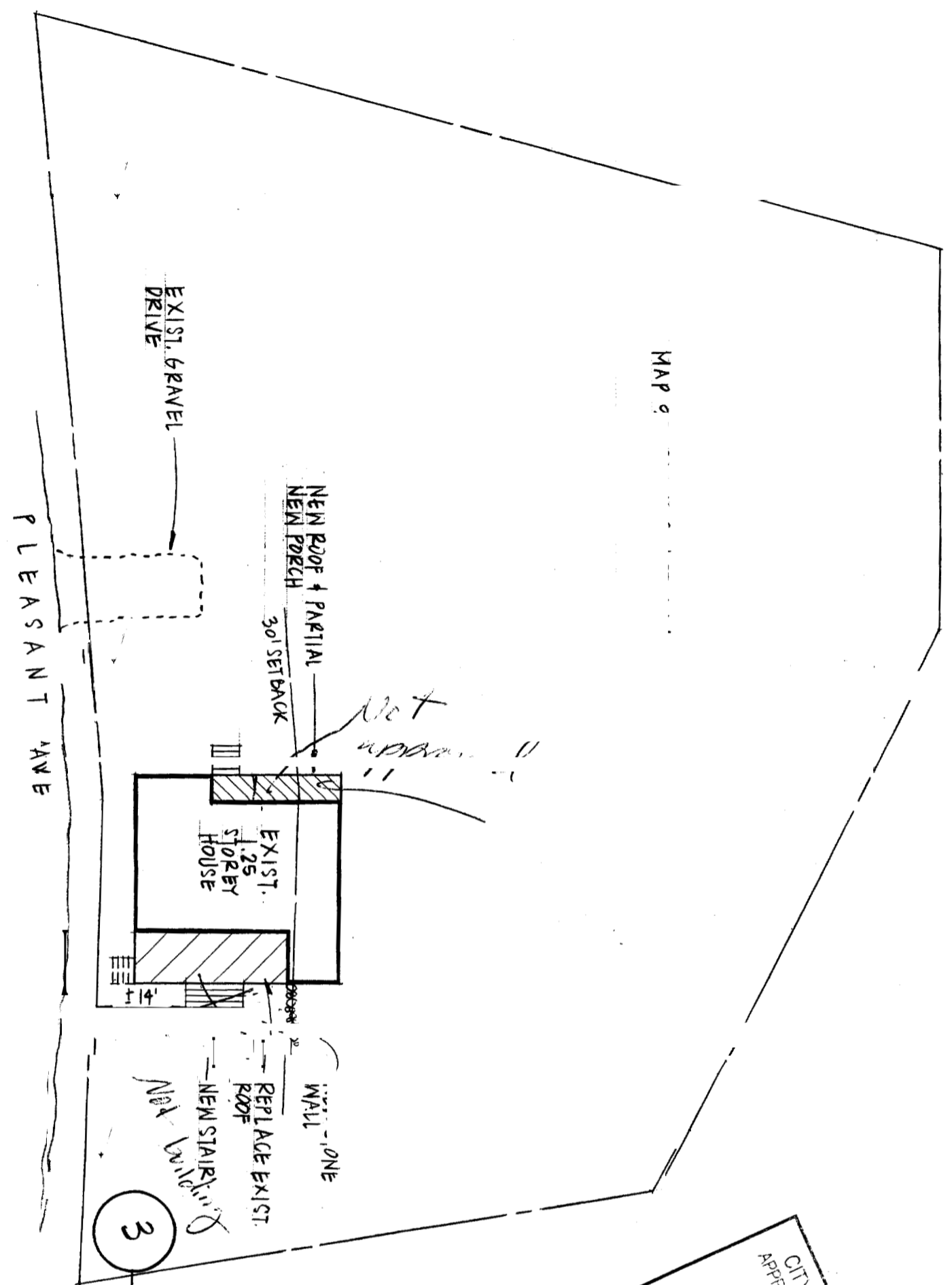


1/4" = 1'-0"

MAP



4
 1 = 20'-0"
 SITE PLAN

25' ASPHALT SHINGLES
 ON ONT. MEMB. FLASH.

3

WALL - ONE
 REPLACE EXIST. ROOF
 NEW STAIRS
 NOT UP TO DATE

CITY OF FORTLAND LAND
 APPROVED CONSTRUCTION PERMITS
 FER 02 2008
 SUPERSEDES ALL
 PRIOR DATED PLANS

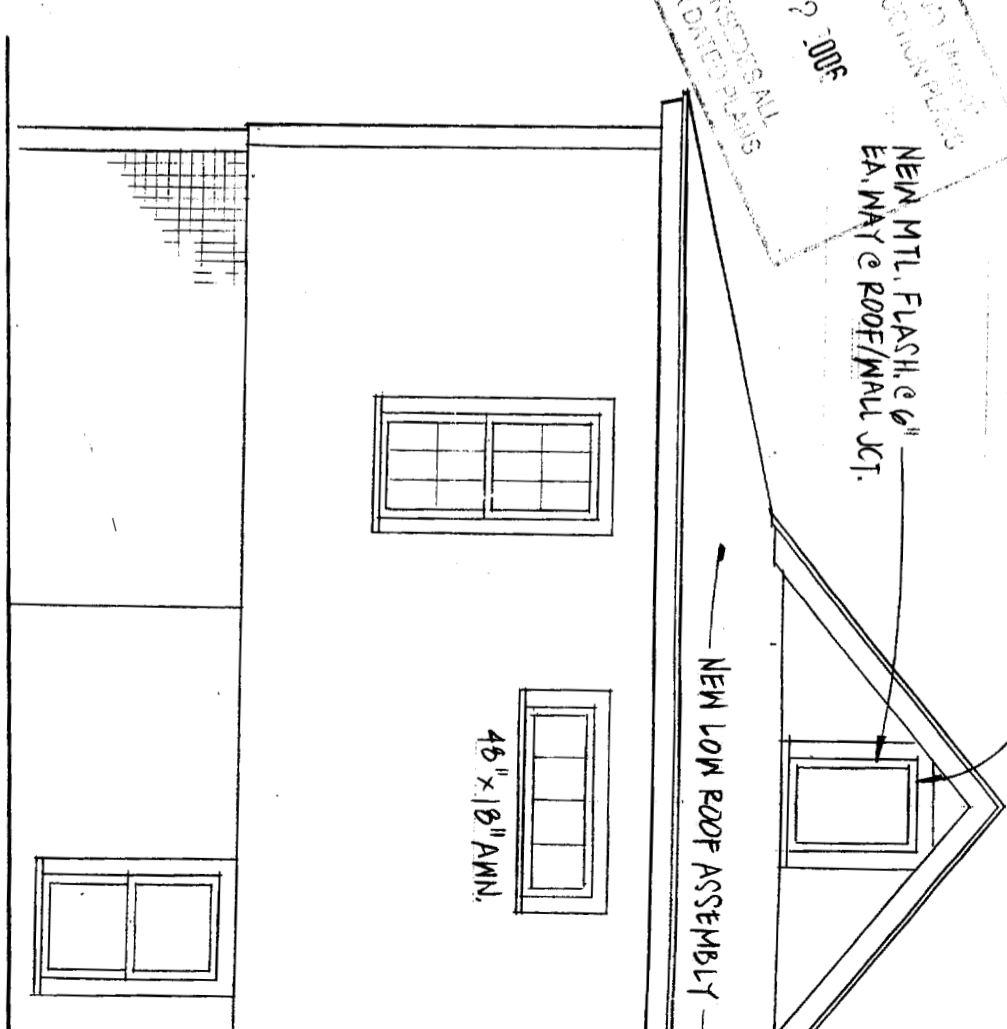
VERIFY SIZE + SHAPE
 OF REPLACEMENT WINDOW

NEW MTL. FLASH. @ 6"
 EA. WAY @ ROOF/WALL JCT.

NEW LOW ROOF ASSEMBLY

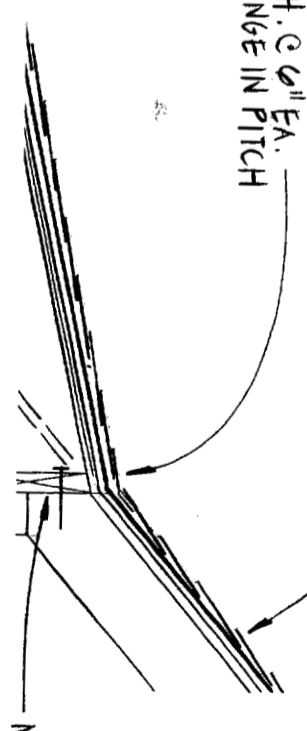
45" x 18" AWN.

1/4" = 1'-0"
 ELEVATION



STRIP EXIST. ROOFING, PATCH
 + REPAIR SHTL. AS REQ'D.
 INSTALL NEW 25' ASPHALT
 SHINGLES ON CONT. MEMB.
 FLASH.

MTL. FLASH. @ 6" EA.
 WAY @ CHANGE IN PITCH

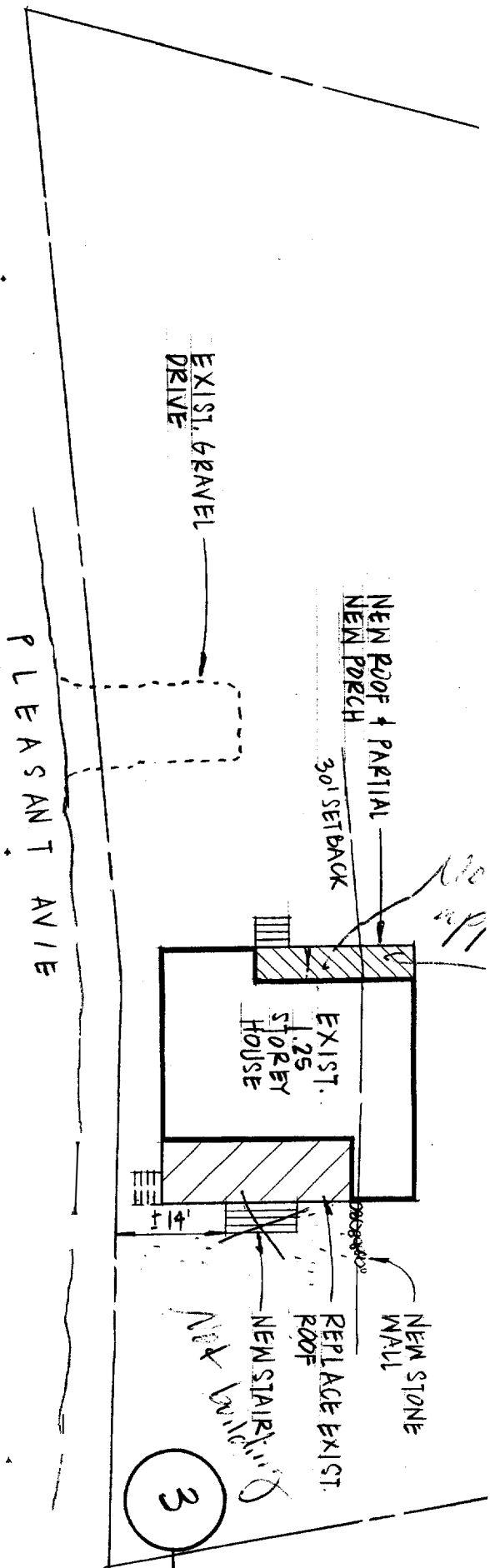


NEW 2x10 LEDGER

4

SITE PLAN

1" = 20'-0"



3

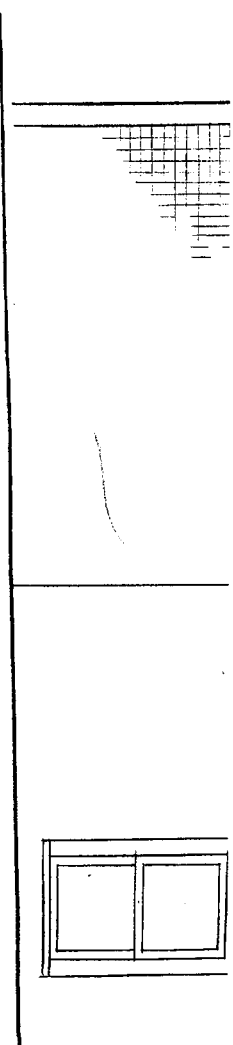
ELEVATION

1/4" = 1'-0"

STRIP EXIST. ROOFING, PATCH + REPAIR SHIT. AS REQ'D. INSTALL NEW 25Y. ASPHALT SHINGLES ON CONT. MEMB. FLASH.

MTL. FLASH. @ 6" EA. WAY @ CHANGE IN PITCH

CITY OF PORTLAND, MAINE
APPROVED CONSTRUCTION PLANS
FEB 2 2006
SUPERSEDES ALL PRIOR DATED PLANS



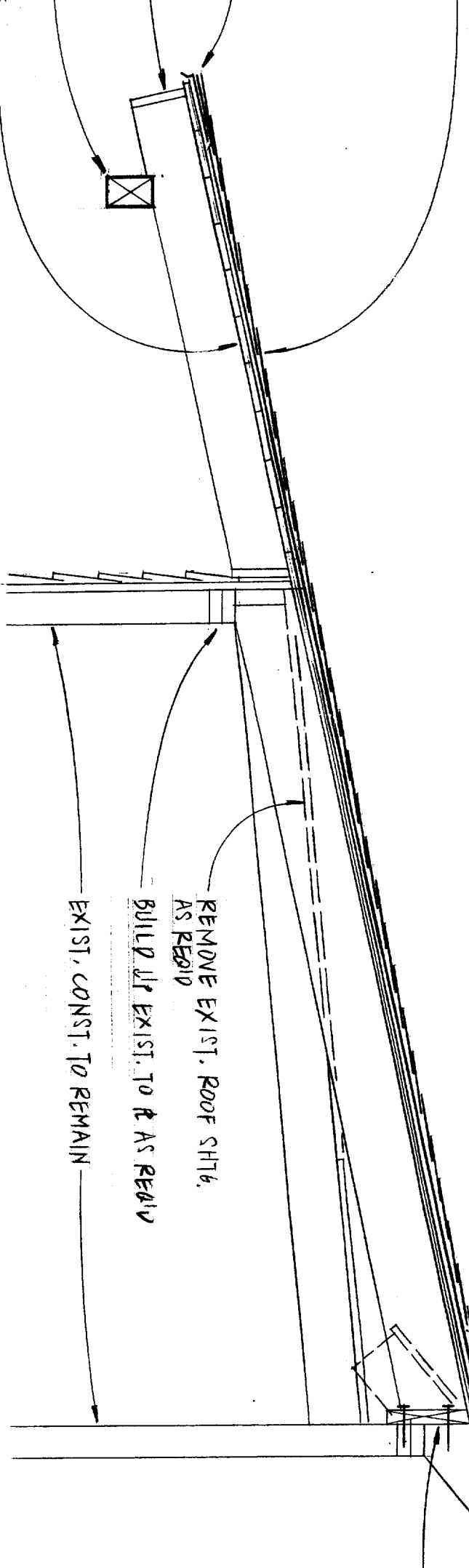
25 Y. ASPHALT SHINGLES ON CONT. MEMB. FLASH. ON 1/2" OSB SHIT. ON 2x8 RAFTERS @ 16" O.C.

PREFAB 8" MTL. DRIP EDGE

1x FASCIA

4x8 DOUG FIR B.M.

1/2" x 6" ROOF SHIT. WHERE EXPOSED TO VIEW



REMOVE EXIST. ROOF SHIT. AS REQ'D

BUILD UP EXIST. TO R AS REQ'D

EXIST. CONST. TO REMAIN

NEW 2x10 LEDGER (2) 1/2" x 4 1/2" Lx4 Bc EA. RAFTER

5/4 x 4 FIR RAIL W/ TOP-URETHANE

1x3 @ EA. SIDE - PAIR

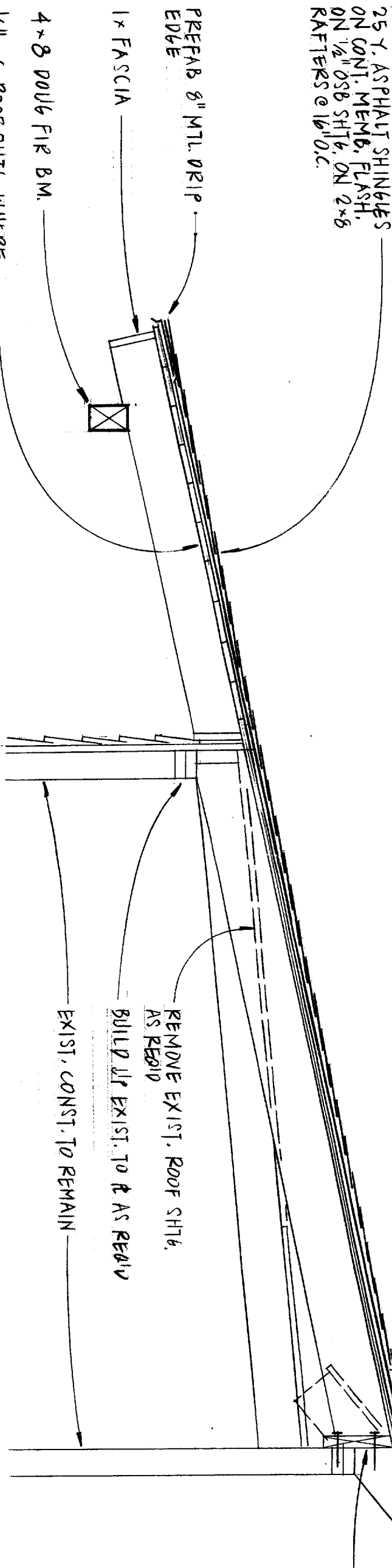
1" BRUSCO" 8900 BAL EVELY SPACED @ M PAINT

1x3 @ EA. SIDE - PAI

6

DET. @ NEW ROOF FRAMING

3/4" = 1'-0"

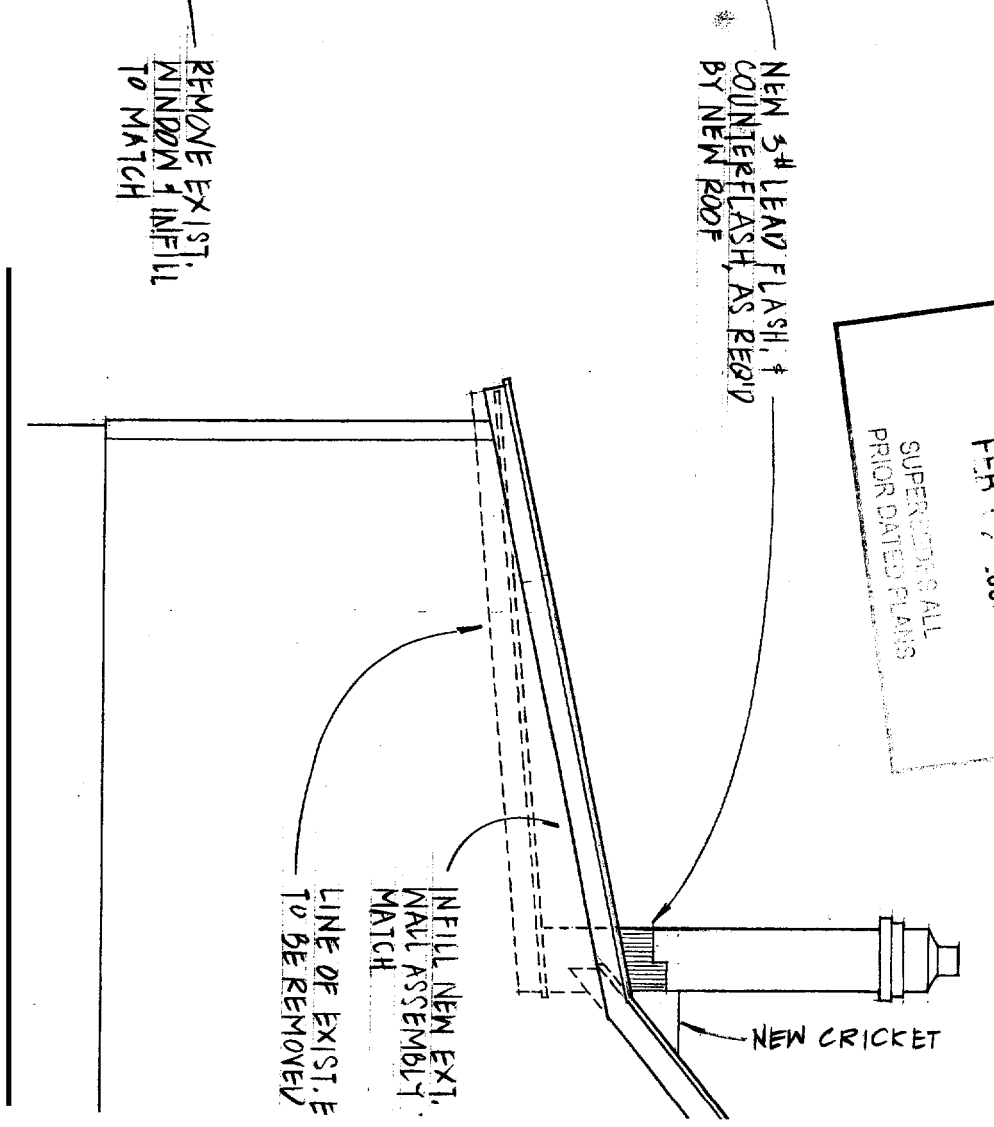
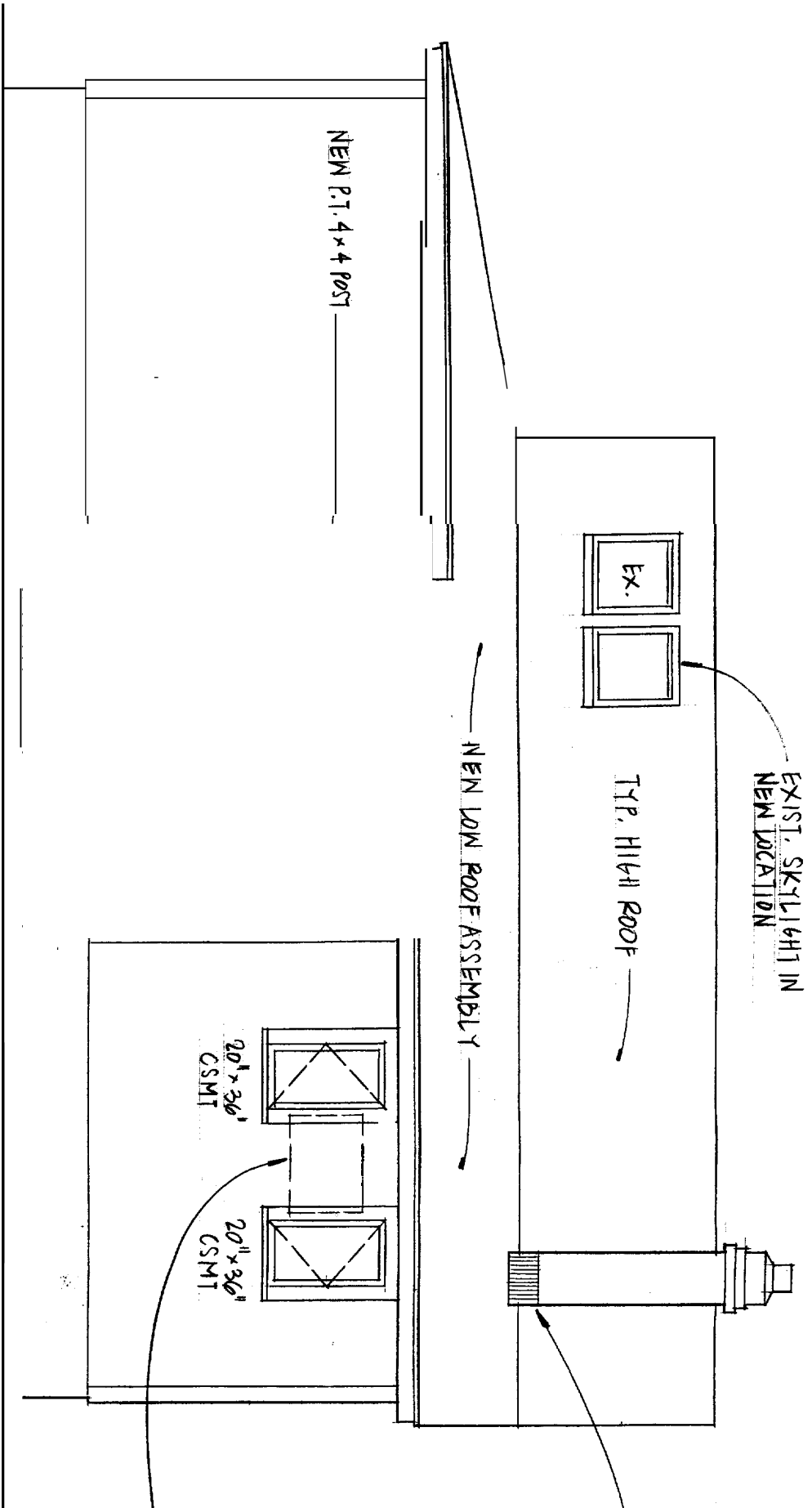


5

DET. @

3/4" = 1'-0"

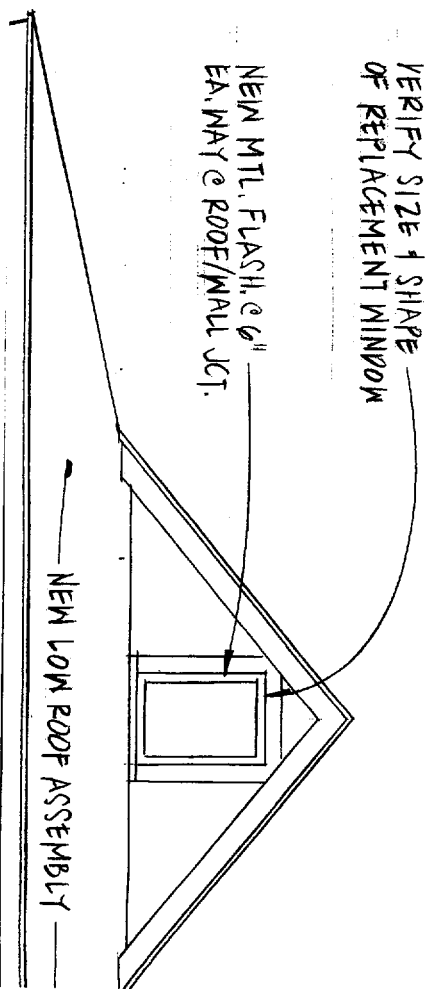
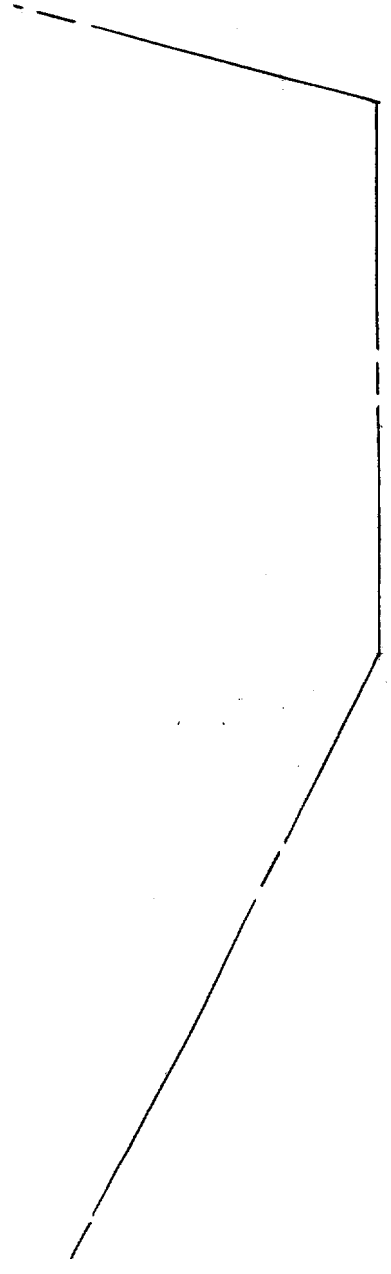
CITY OF PORTLAND DEPARTMENT OF PERMITS
 APPROVED CONSTRUCTION NOTATIONS
 FEB 02 2005
 SUPERSEDES ALL
 PRIOR DATED PLANS

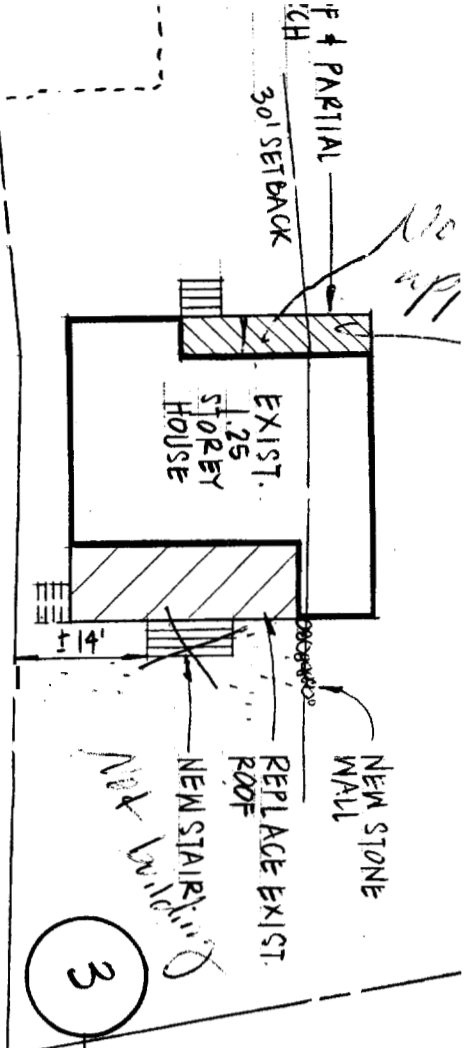


1

ELEVATIONS

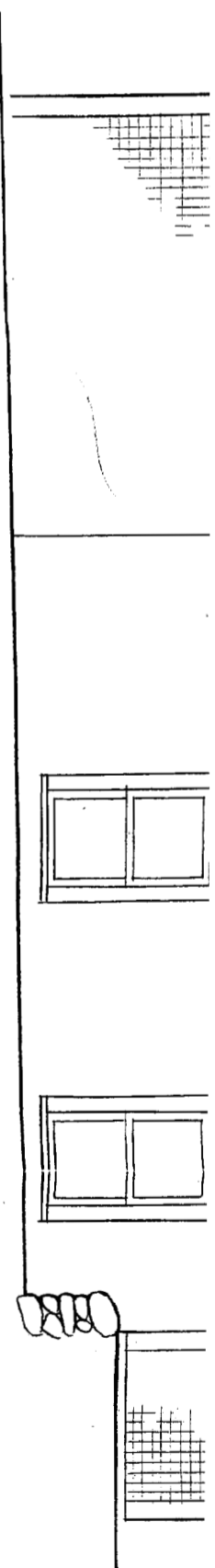
1/4" = 1'-0"





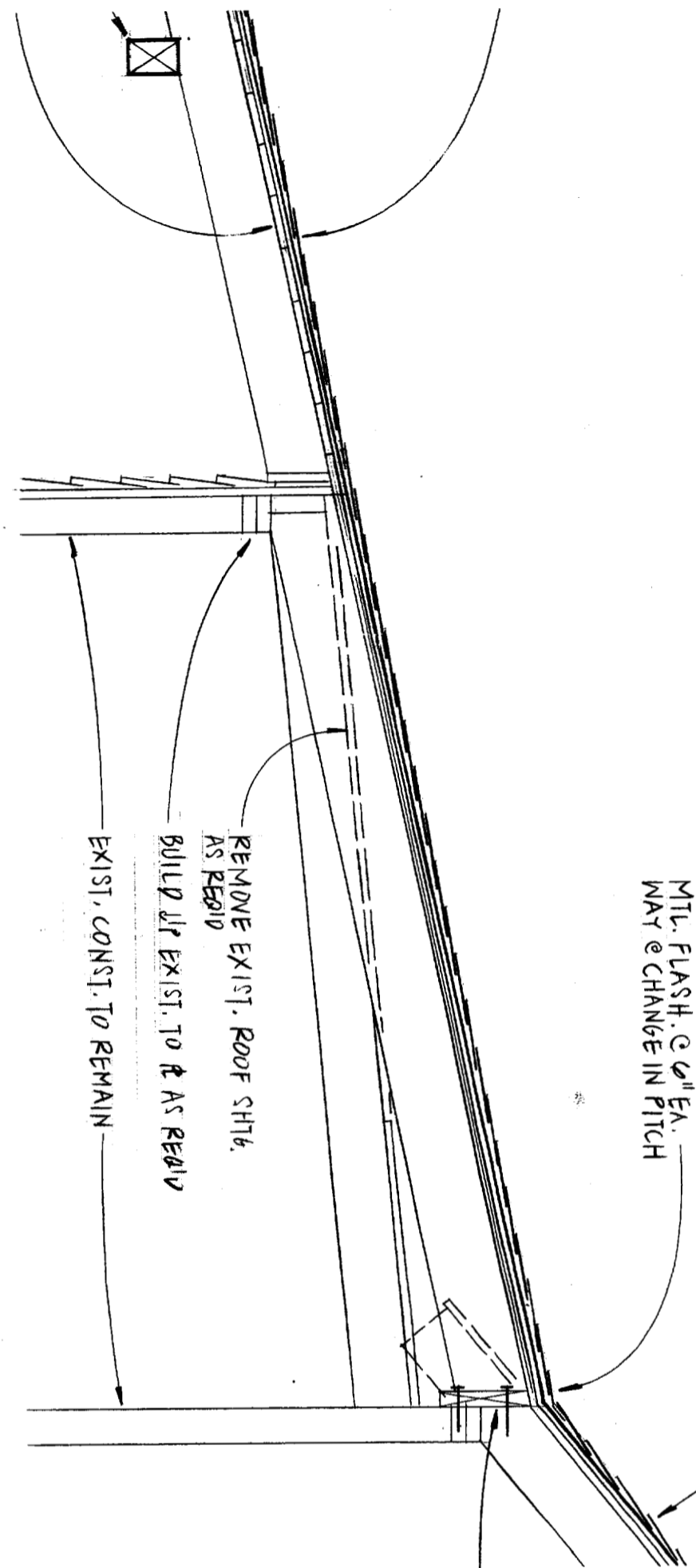
EASANT AVE

ELEVATION
1/4" = 1'-0"



STRIP EXIST. ROOFING, PATCH
+ REPAIR SHIT. AS REQ'D.
INSTALL NEW 25Y. ASPHALT
SHINGLES ON CONT. MEMB.
FLASH.

MTL. FLASH @ 6" EA.
WAY @ CHANGE IN PITCH



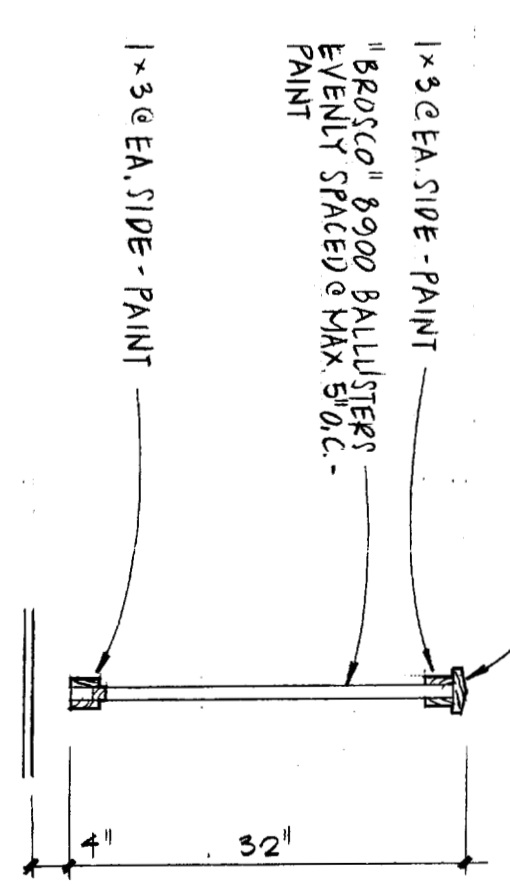
REMOVE EXIST. ROOF SHIT.
AS REQ'D
BUILD UP EXIST. TO 6 AS REQ'D
EXIST. CONST. TO REMAIN

NEW 2x10 LEDGER W/
(2) 1/2" x 4 1/2" LAG BOLTS @
EA. RAFTER

5/4 x 4 FIRE RAIL W/SLOPED
TOP - URETHANE

1x3 @ EA. SIDE - PAINT
"BROSCO" 8900 BALLUSTERS
EVENLY SPACED @ MAX. 5" O.C. -
PAINT

1x3 @ EA. SIDE - PAINT



CITY OF PORTLAND PARTIAL
APPROVED CONSTRUCTION PLANS
FER 69 2008
SUPERSEDES ALL
PRIOR DATED PLANS

PROVIDE NEW ROOF

REMOVE EXIST
+ INFILL TO MA
OVE WALL CAB
NEW WINDOWS.
REQ'D P.O.

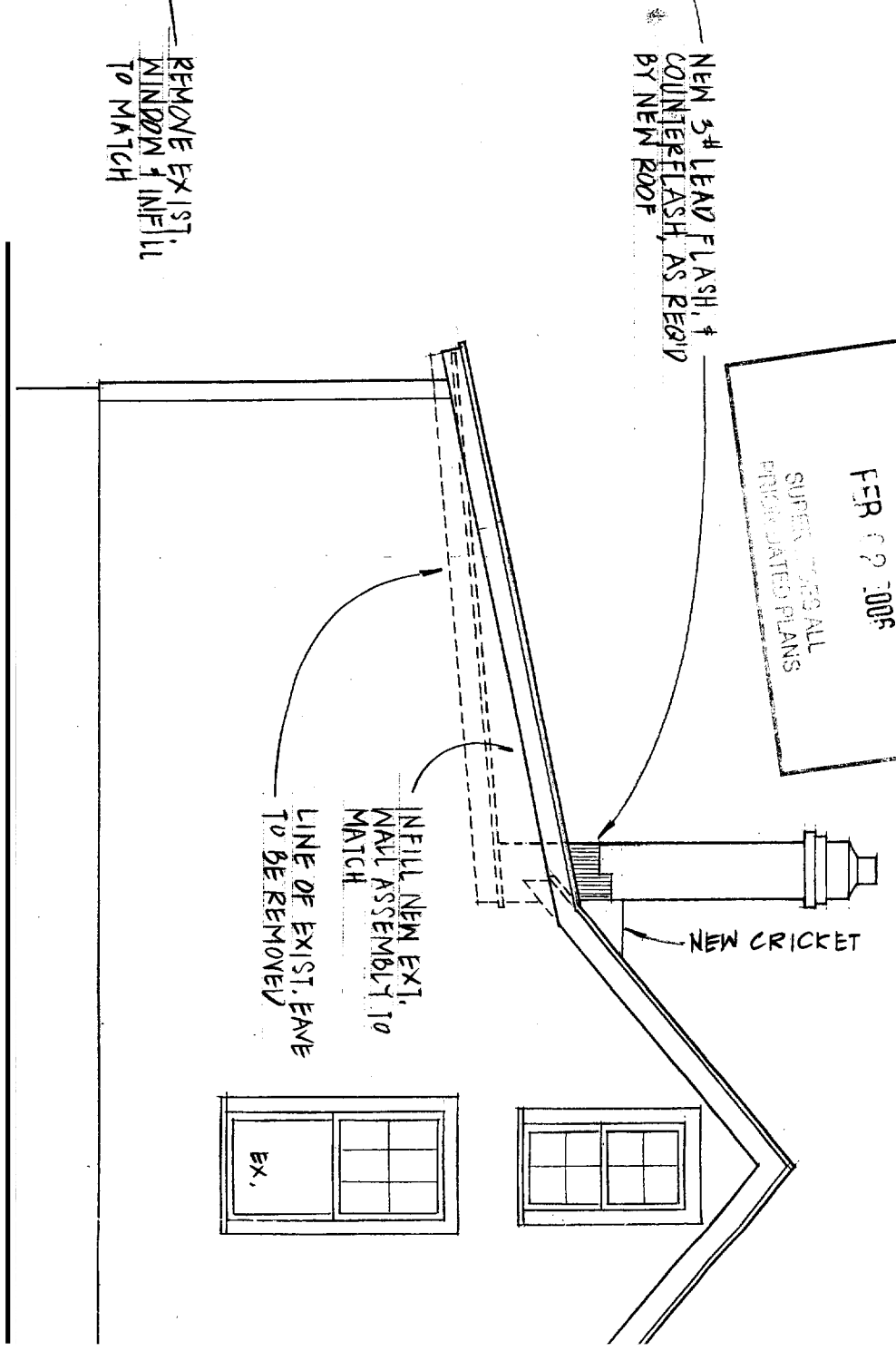
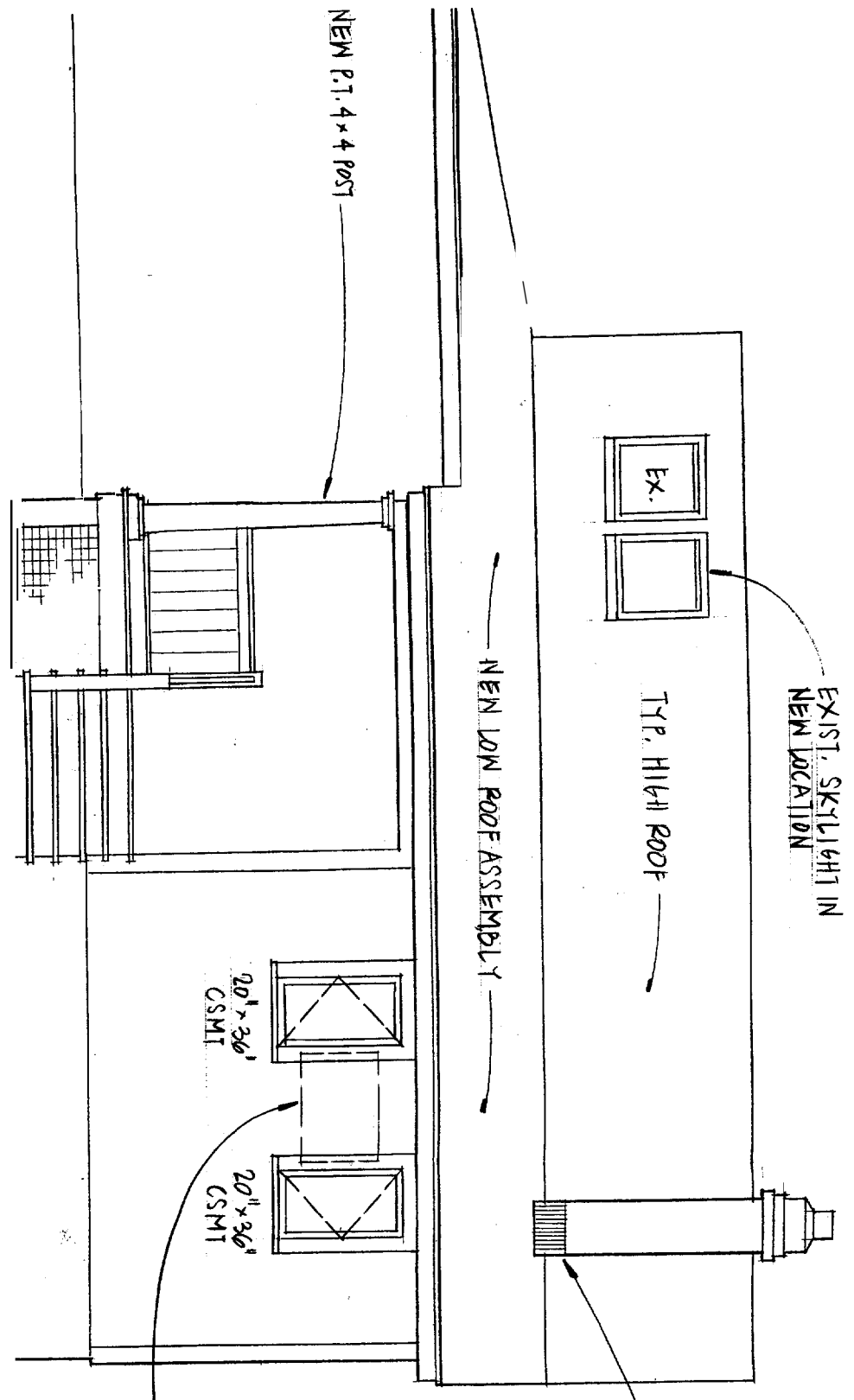
2F FRAMING

5 DET. @ NEW HANDRA
3/4" = 1'-0"

2

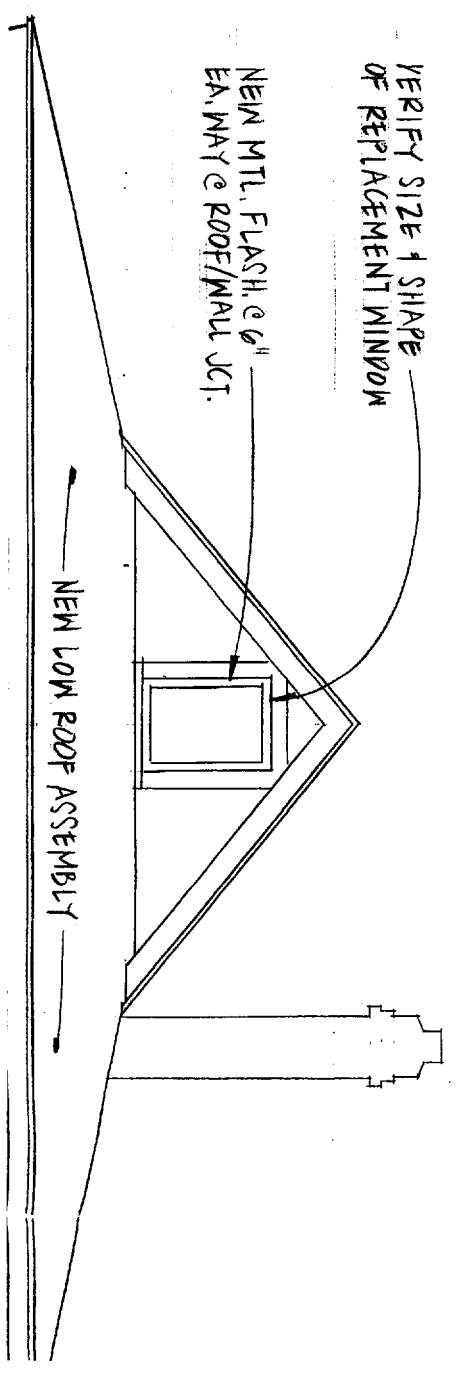
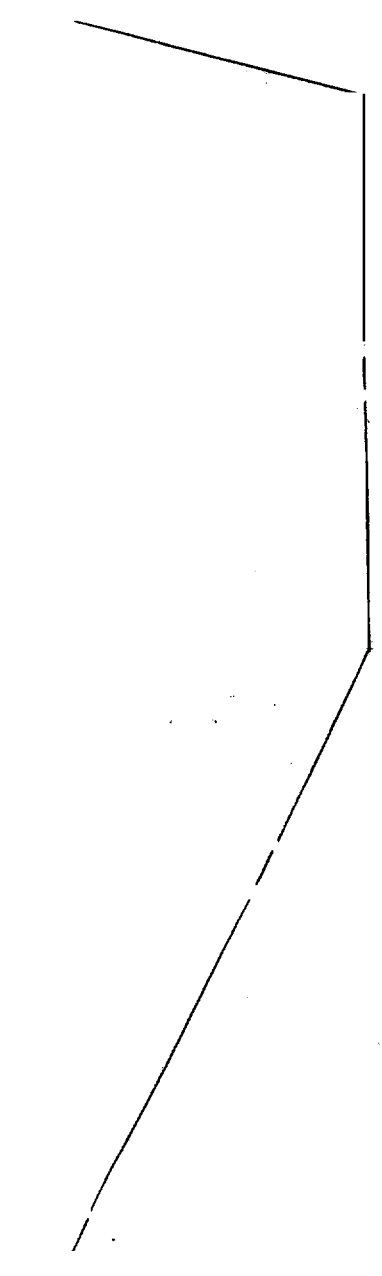
CITY OF PORTLAND, MAINE
APPROVED CONSTRUCTION PLANS

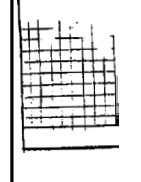
FEB 22 2005
SUPERSEDES ALL
PREVIOUS DATED PLANS



ELEVATIONS

1/4" = 1'-0"



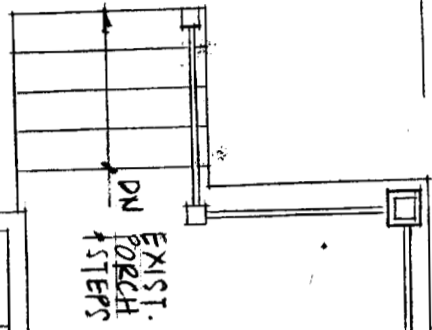


30' SET BACK

REPAIR/RETUNE HINGED
CONST. AS REQ'D. INSTALL
NEW 1/2" M.P. 6YR. BD. ON
4 MIL V.B.
REMOVE EXIST. SKYLIGHT
INFILL TO MATCH

REMOVE EXIST. PORCH ROOF
AND REPLACE W/ NEW 2x8
RAFTERS @ 16" O.C. SIM.
TO H/AI.

PROVIDE NEW ROOF
OVER EXIST. PORCH



PORTION OF EXIST. WALL
TO BE REMOVED - PATCH
FLOOR & CLT. AS REQ'D

REMOVE EXIST. SKYLIGHT
& CLG. FINISH. REMOVE
EXIST. INSUL. INSTALL NEW
(2) LAYERS 2" RIBBED INSUL.
W/ FOAM SPRAY @ JOINTS.
INSTALL NEW 1/2" GYP. BD.
ON 4 MIL V.B.

KITCHEN

20' x 36' CSMT

REMOVE EXIST. WINDOW
INFILL TO MATCH. REM-
OVE WALL CABINETS & INSTALL
NEW WINDOWS. VERIFY
REQ'D P.O.

CITY OF PORTLAND, MAINE
APPROVED CONSTRUCTION PLANS
FEB 02 2006
SUPERSEDES ALL
PRIOR DATED PLANS

RENOVATI
PROIT
369 PLEAS,
PEAKS ISLA

NEW WOOD STEPS TO
GRADE NOT TO EXCEED
FOOTPRINT OF EXIST.
TO BE REMOVED

NEW 2x8 RAFTERS @ 16" O.C.

NEW WP. RAIL

EXIST. DECK
TO REMAIN

EXIST. POST

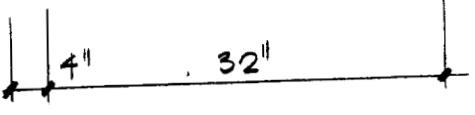
EXIST. POST

EXIST. POST

EXIST. DIG. 10' DEEP RETURN

Staying

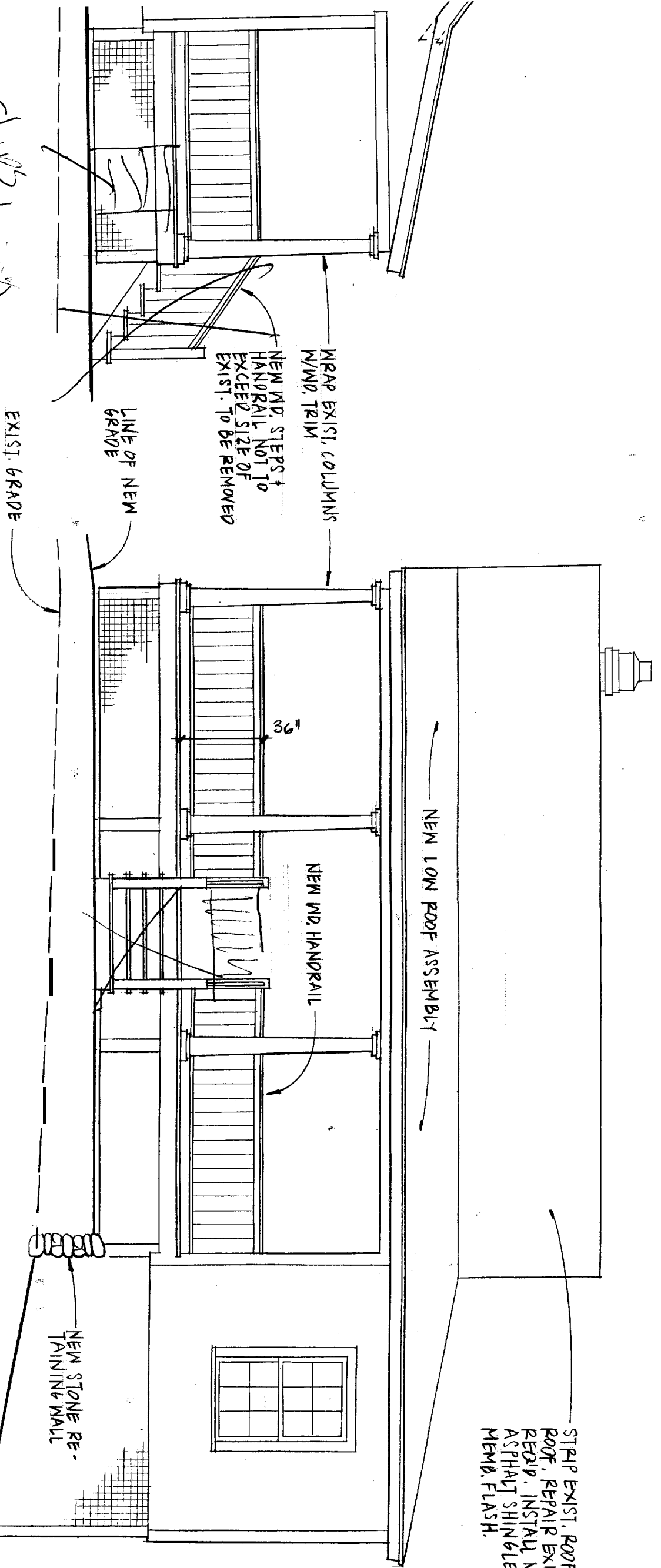
Not doing



2
PIA1
1/4" = 1'-0"

SHEET NO.	DATE: 11 AUG 05
	REV.: 30 NOV 05
	JOB No.: 0505

Strip Shingled



STRIP EXIST. ROOFING @ HIGH ROOF. REPAIR EXIST. SHTG. AS REQ'D. INSTALL NEW 25' ASPHALT SHINGLES ON CONT. MEMB. FLASH.

CITY OF PORTLAND
 APPROVED CONSTRUCTION PLANS
 FEB 02 2006
 SUPERSEDES ALL
 PRIOR DATED PLANS

GERALD WEINAND ARCHITECTURAL DESIGN

P.O. BOX 314
BRISTOL MAINE
207. 529. 4229