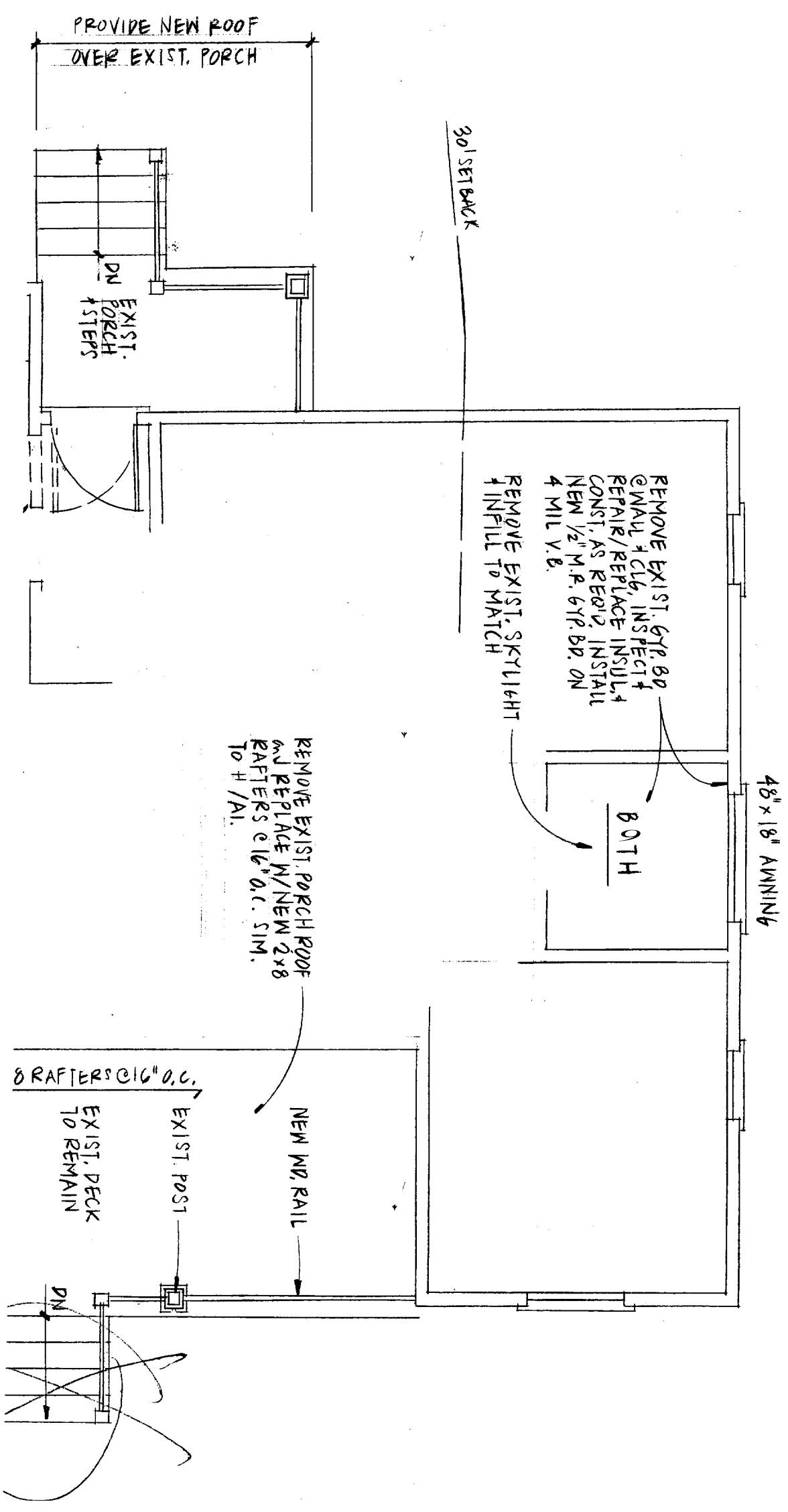


5th 11 U

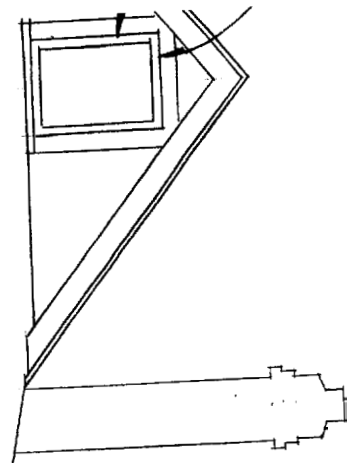


CITY OF PORTLAND, MAINE  
 APPROVED CONSTRUCTION PLANS  
 FEB. 2, 2006  
 SUPERSEDES ALL  
 PRIOR DATED PLANS

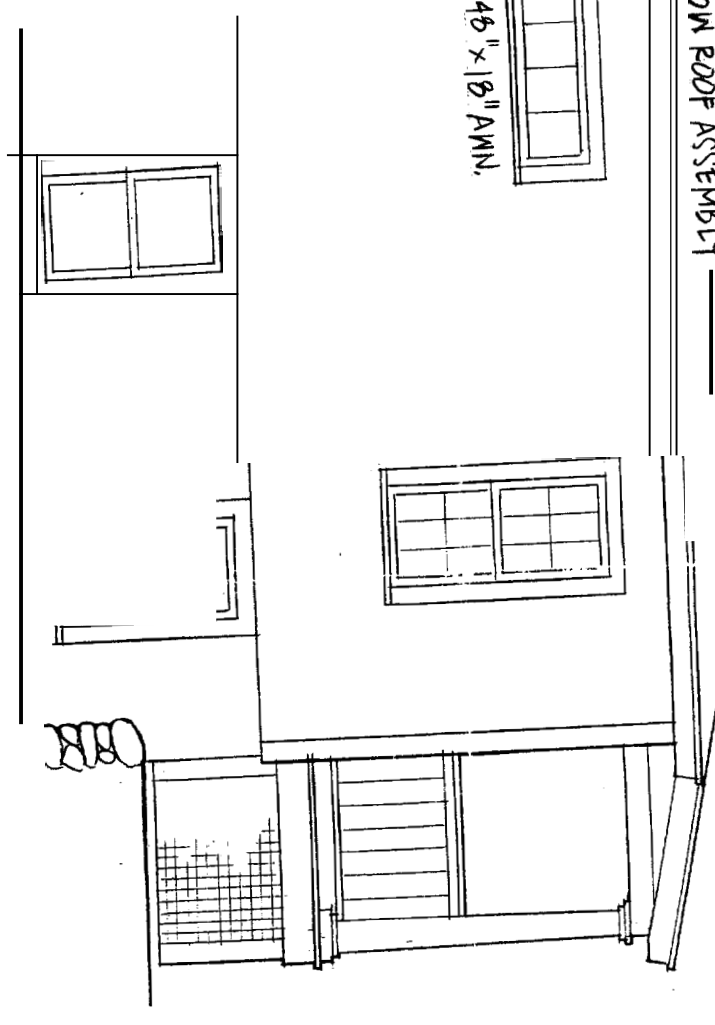
NEW WINDOWS TO BE BY  
 "PARADISE" OR EQUAL

RENOVATIONS TO THE  
**PROIA HOUSE**  
 369 PLEASANT AVENUE  
 PEAKS ISLAND MAINE

5410

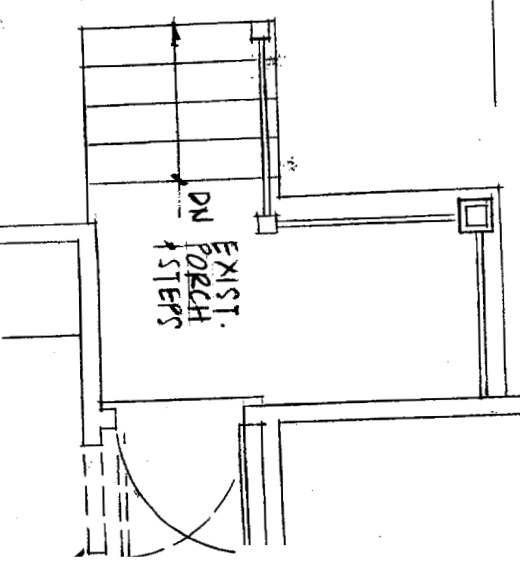


48" x 18" AMN.



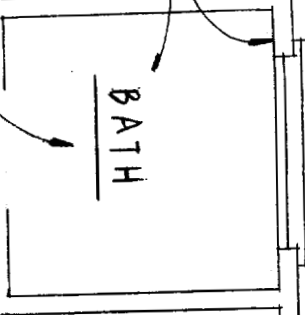
30' SETBACK

PROVIDE NEW ROOF OVER EXIST. PORCH



REMOVE EXIST. 6YR. BD. G WALL 4' CL6, INSPECT + REPAIR/REPLACE INSUL. + CONST. AS REQ'D. INSTALL NEW 1/2" M.P. 6YR. BD. ON 4 MIL V.E.

REMOVE EXIST. SKYLIGHT + INFILL TO MATCH



REMOVE EXIST. PORCH ROOF AND REPLACE W/ NEW 2x8 RAFTERS @ 16" O.C. SIM. TO H/AI.

2x8 RAFTERS @ 16" O.C.  
EXIST. POST  
NEW W/O. RAIL  
EXIST. DECK TO REMAIN  
DN

CITY OF PORTLAND MAKE APPROVED CONSTRUCTION PLANS  
FEB 2 2005  
SUPERSEDES ALL PRIOR DATED PLANS