

**NOTES:**

**ROT & RUST RESISTANCE:**

1.) ALL WOOD FRAMING MEMBERS THAT REST ON CONCRETE OR MASONRY EXTERIOR WALLS AND ARE LESS THAN 8" FROM THE EXPOSED GROUND SHALL BE OF A ROT RESISTANT MATERIAL.

2.) ALL WOOD JOISTS OR THE BOTTOM OF A WOOD STRUCTURAL FLOOR WHEN CLOSER THAN 18", OR WOOD GIRDERS WHEN CLOSER THAN 12", TO THE EXPOSED GROUND, SHALL BE OF A ROT RESISTANT MATERIAL.

3.) NEW WOOD SIDING AND/OR SHEATHING TO BE ABOVE GRADE A MINIMUM OF 6" OR ELSE OF A ROT RESISTANT MATERIAL.

4.) ALL DECK/STAIR FRAMING/DECKING TO BE OF ROT RESISTANT WOOD.

5.) ALL HARDWARE AND FASTNERS TO BE HOT DIP GALVANIZED, SIMPSON "Z-MAX", OR STAINLESS STEEL.

FORM AND POUR CONCRETE STRIP FOOTING. PIN TO LEDGE. PROVIDE 2X6 SILL PLATE ANCHORED WITH (2) J-BOLTS, (MINIMUM 8" EMBED). TOENAIL JOISTS DIRECTLY TO SILL PLATE (NO GIRDER THIS SECTION)

FRAME AND SCRIBE DECK AROUND EXPOSED LEDGE. DOUBLE UP TRIMMER JOISTS AND HEADER. (NO CANTILEVERING OF JOISTS)

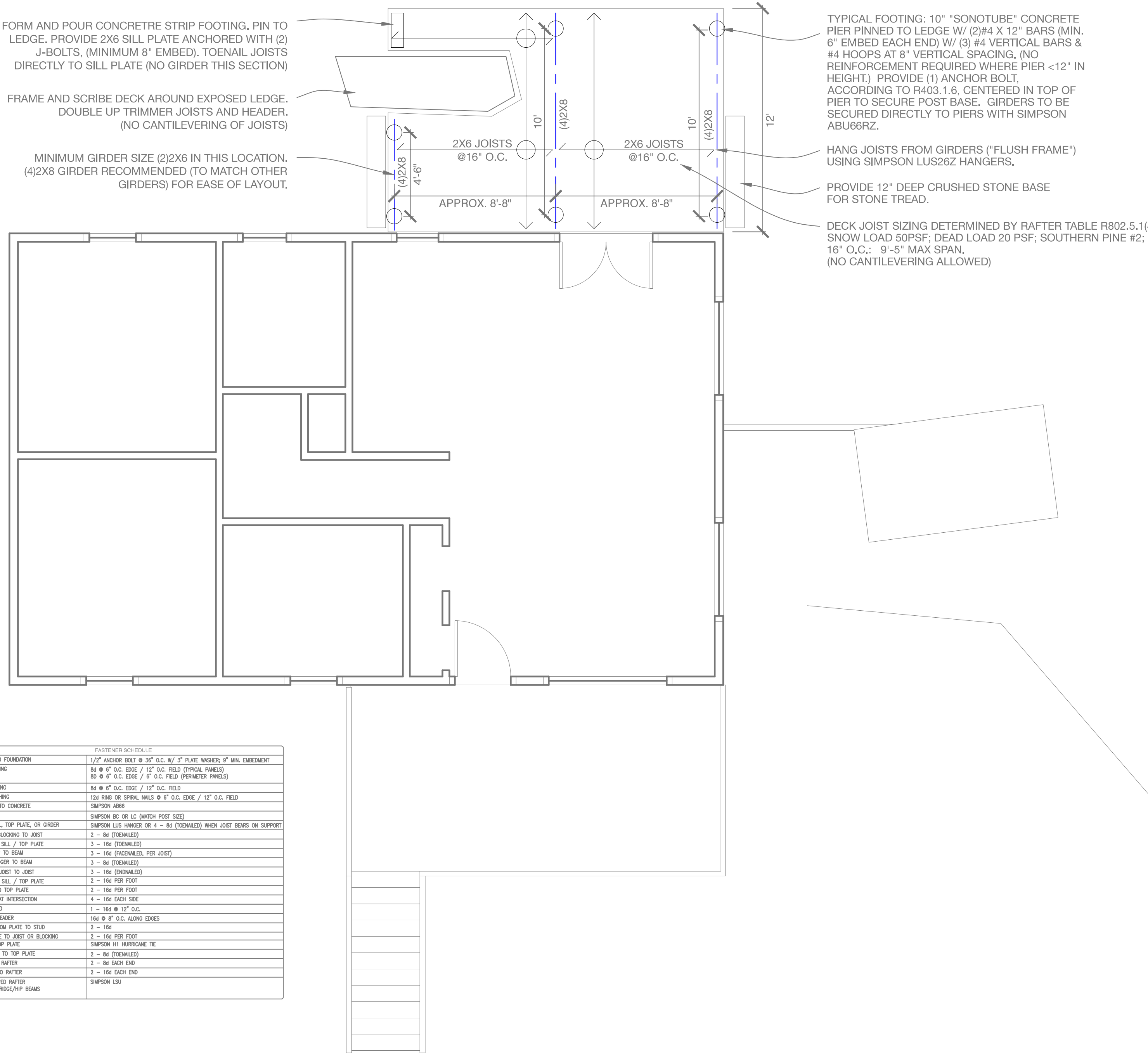
MINIMUM GIRDER SIZE (2)2X6 IN THIS LOCATION. (4)2X8 GIRDER RECOMMENDED (TO MATCH OTHER GIRDERS) FOR EASE OF LAYOUT.

TYPICAL FOOTING: 10" SONOTUBE CONCRETE PIER PINNED TO LEDGE W/ (2)#4 X 12" BARS (MIN. 6" EMBED EACH END) W/ (3) #4 VERTICAL BARS & #4 HOOPS AT 8" VERTICAL SPACING. (NO REINFORCEMENT REQUIRED WHERE PIER <12" IN HEIGHT.) PROVIDE (1) ANCHOR BOLT, ACCORDING TO R403.1.6, CENTERED IN TOP OF PIER TO SECURE POST BASE. GIRDERS TO BE SECURED DIRECTLY TO PIERS WITH SIMPSON ABU66RZ.

HANG JOISTS FROM GIRDERS ("FLUSH FRAME") USING SIMPSON LUS26Z HANGERS.

PROVIDE 12" DEEP CRUSHED STONE BASE FOR STONE TREAD.

DECK JOIST SIZING DETERMINED BY RAFTER TABLE R802.5.1(4) : SNOW LOAD 50PSF; DEAD LOAD 20 PSF; SOUTHERN PINE #2; 16" O.C.: 9'-5" MAX SPAN. (NO CANTILEVERING ALLOWED)



FASTENER SCHEDULE	
SILL PLATE TO FOUNDATION	1/2" ANCHOR BOLT @ 36" O.C. W/ 3" PLATE WASHER; 9" MIN. EMBEDMENT
ROOF SHEATHING	8d @ 6" O.C. EDGE / 12" O.C. FIELD (TYPICAL PANELS) 8d @ 6" O.C. EDGE / 6" O.C. FIELD (PERIMETER PANELS)
WALL SHEATHING	8d @ 6" O.C. EDGE / 12" O.C. FIELD
FLOOR SHEATHING	1/2" BING OR SPIRAL NAILS @ 6" O.C. EDGE / 12" O.C. FIELD
POST BASES TO CONCRETE	SIMPSON AB66
POST CAPS	SIMPSON BC OR LC (MATCH POST SIZE)
JOIST ON SILL, TOP PLATE, OR GIRDER	SIMPSON LUS HANGER OR 4 - 8d (TOENAIL) WHEN JOIST BEARS ON SUPPORT
BRIDGING / BLOCKING TO JOIST	2 - 8d (TOENAIL)
BLOCKING TO SILL / TOP PLATE	3 - 16d (TOENAIL)
LEDGER STRIP TO BEAM	3 - 16d (FACE NAILED, PER JOIST)
JOIST ON LEDGER TO BEAM	3 - 8d (TOENAIL)
BAND / RIM JOIST TO JOIST	3 - 16d (END NAILED)
RIM JOIST TO SILL / TOP PLATE	2 - 16d PER FOOT
TOP PLATE TO TOP PLATE	2 - 16d PER FOOT
TOP PLATES AT INTERSECTION	4 - 16d EACH SIDE
STUD TO STUD	1 - 16d @ 12" O.C.
HEADER TO HEADER	16d @ 8" O.C. ALONG EDGES
TOP OR BOTTOM PLATE TO STUD	2 - 16d
BOTTOM PLATE TO JOIST OR BLOCKING	2 - 16d PER FOOT
RAFTER TO TOP PLATE	SIMPSON H1 HURRICANE TIE
CILING JOIST TO TOP PLATE	2 - 8d (TOENAIL)
BLOCKING TO RAFTER	2 - 8d EACH END
BAND JOIST TO RAFTER	2 - 16d EACH END
SLOPED/SKEWED RAFTER HANGERS AT RIDGE/HP BEAMS	SIMPSON LSU

DATE	NOTES
2016.02.17	
2016.04.12	REVISED S1

1/4" = 1'

**Rachel Conly Design LLC**  
26 Sterling Street  
Peaks Island, Maine 04108  
207.766.5625

**PROJECT**  
**Held Residence**  
**52 Reed Ave.**  
**Peaks Island, ME**  
**04108**

**S1**  
**Proposed Deck**  
**Footings & Framing**

**A Proposed Deck Footings and Framing**