



Permitting and Inspections Department  
Approved with Conditions

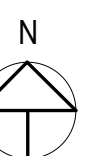
02/19/2019

CLAYMAN/CHESSIN

960 SEAHORE AVE

PEAKS ISLAND, MAINE

NO.	DESCRIPTION	DATE
1	Revision 1	Date 1



CONTENT	
PLANS	
DRAWN BY:	Author
PROJECT NO:	0000
DATE:	1/21/19
REVISED:	2/11/19
SCALE:	As indicated

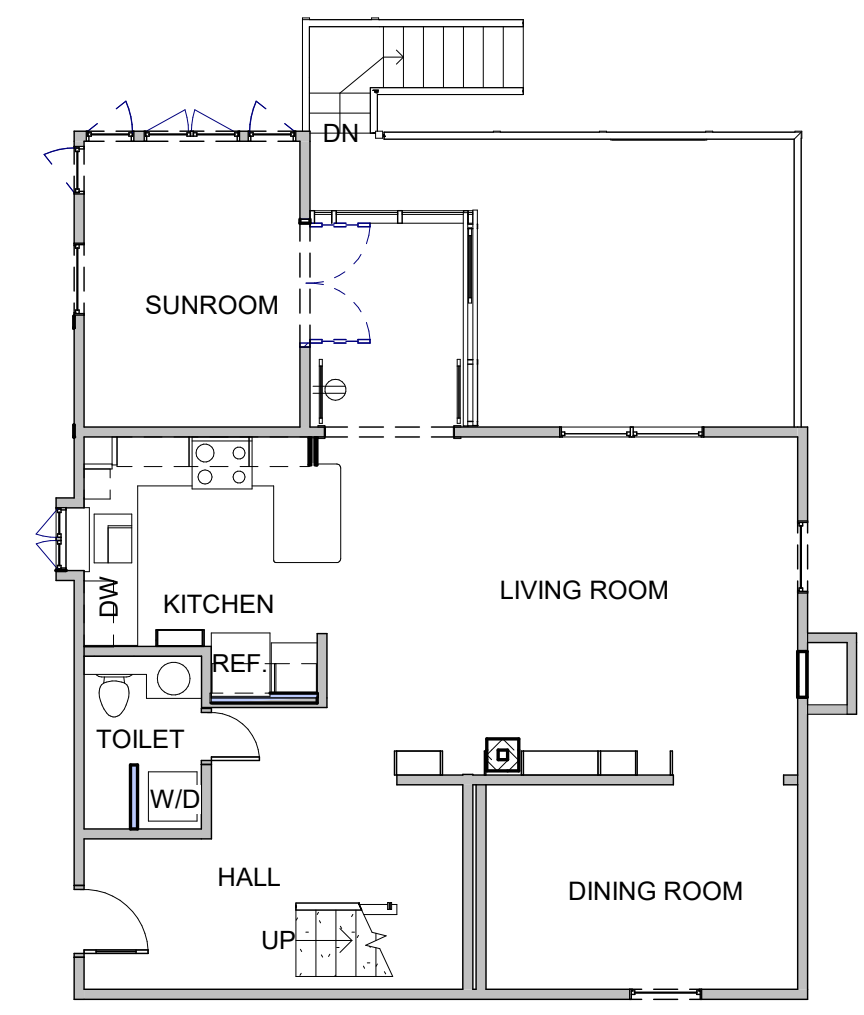
A-1

Project Phase

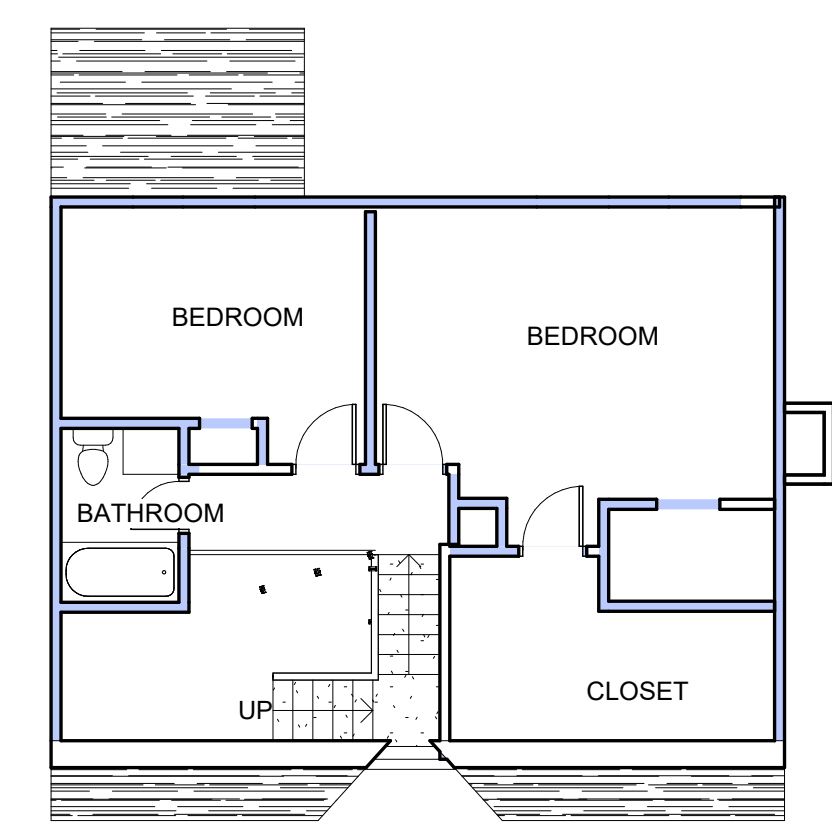


SEASHORE AVENUE

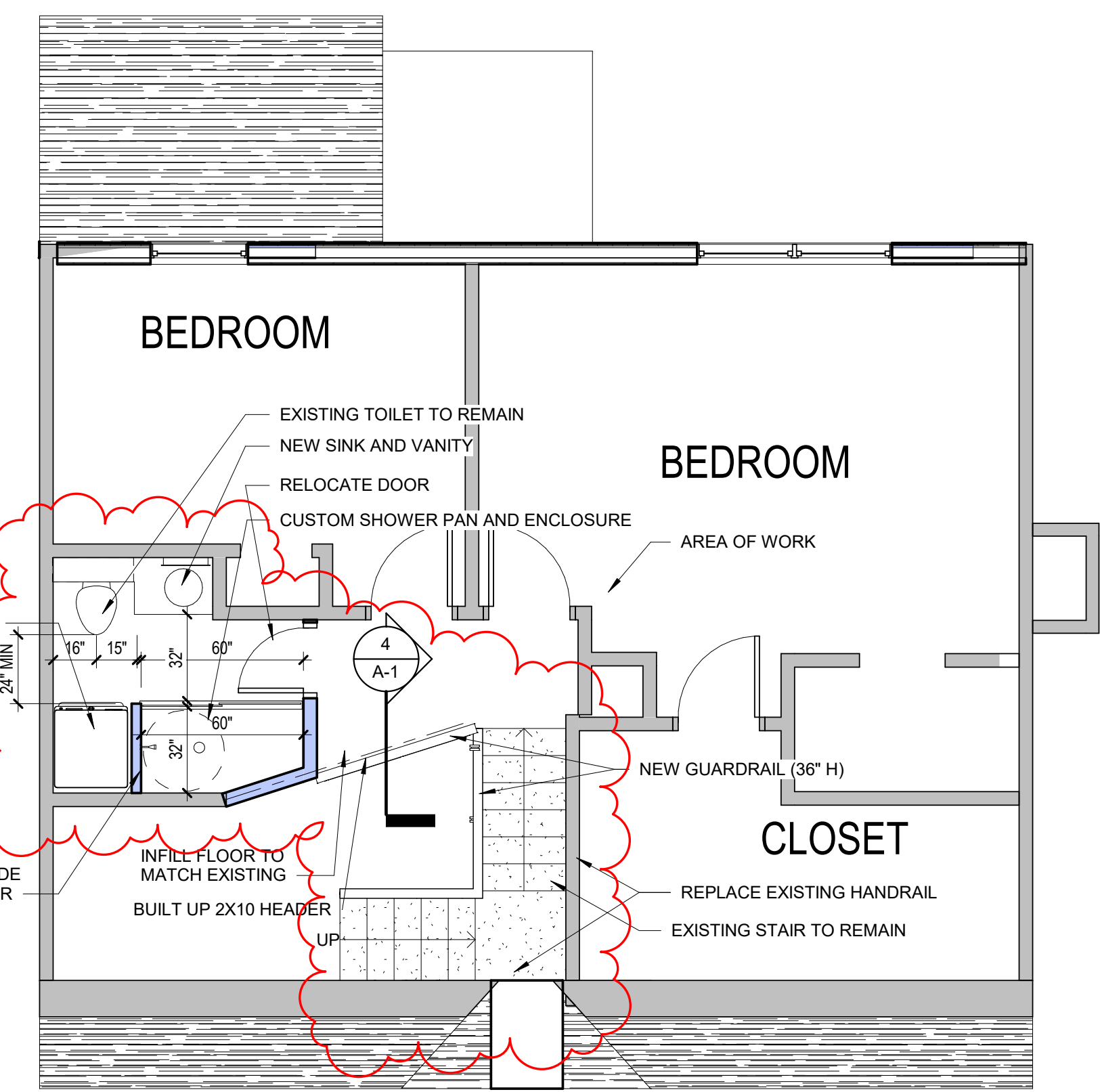
3 SITE PLAN  
A-1  
1" = 40'-0"



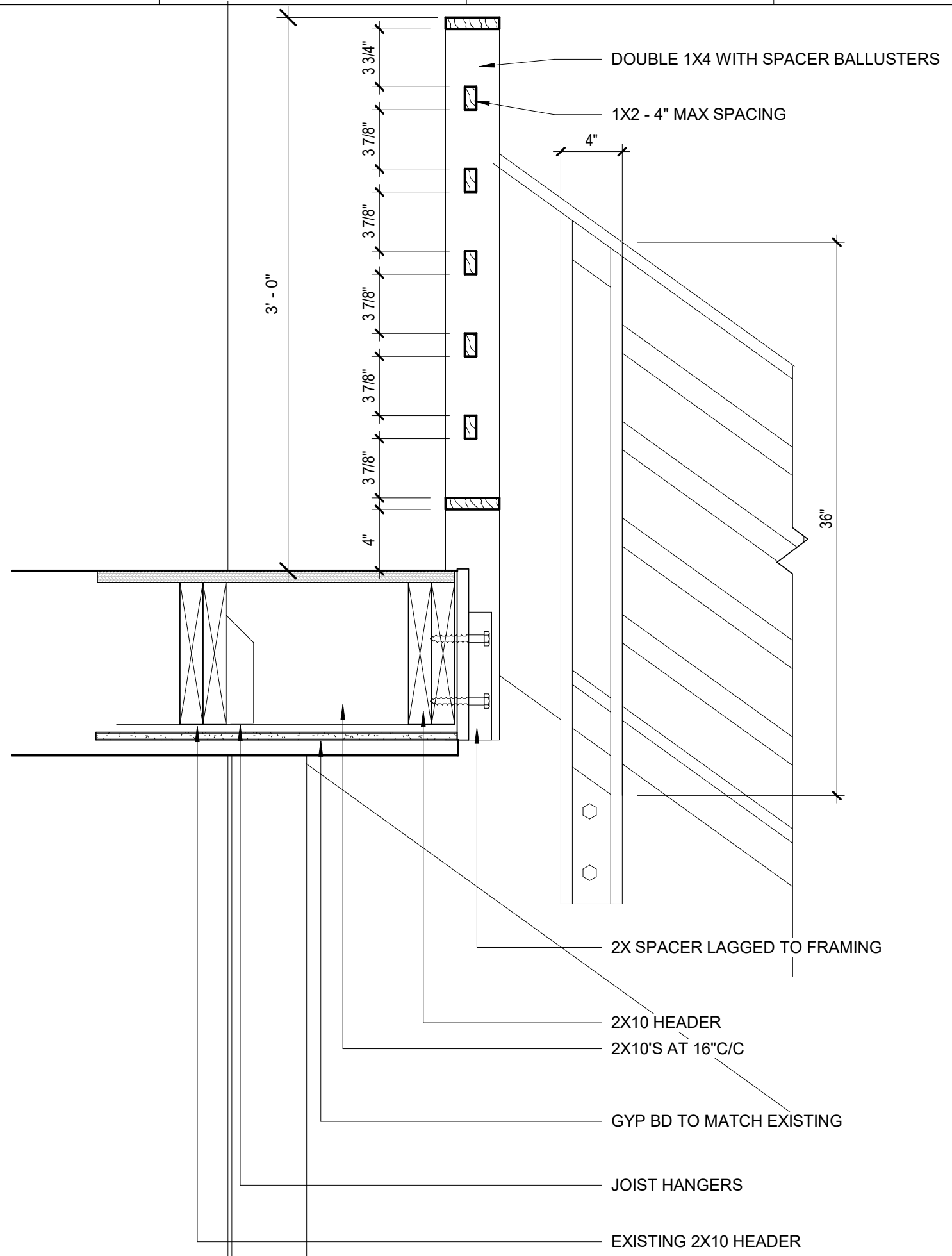
5 LEVEL 1-Original Conditions  
A-1  
1/8" = 1'-0"



6 LEVEL 2 - Original Conditions  
A-1  
1/8" = 1'-0"



2 LEVEL 2  
A-1  
1/4" = 1'-0"



4 GUARDRAIL DETAIL  
A-1  
1 1/2" = 1'-0"



1 LEVEL 1  
A-1  
1/4" = 1'-0"

1 2 3 4 5 6 7 8 9 10 11 12