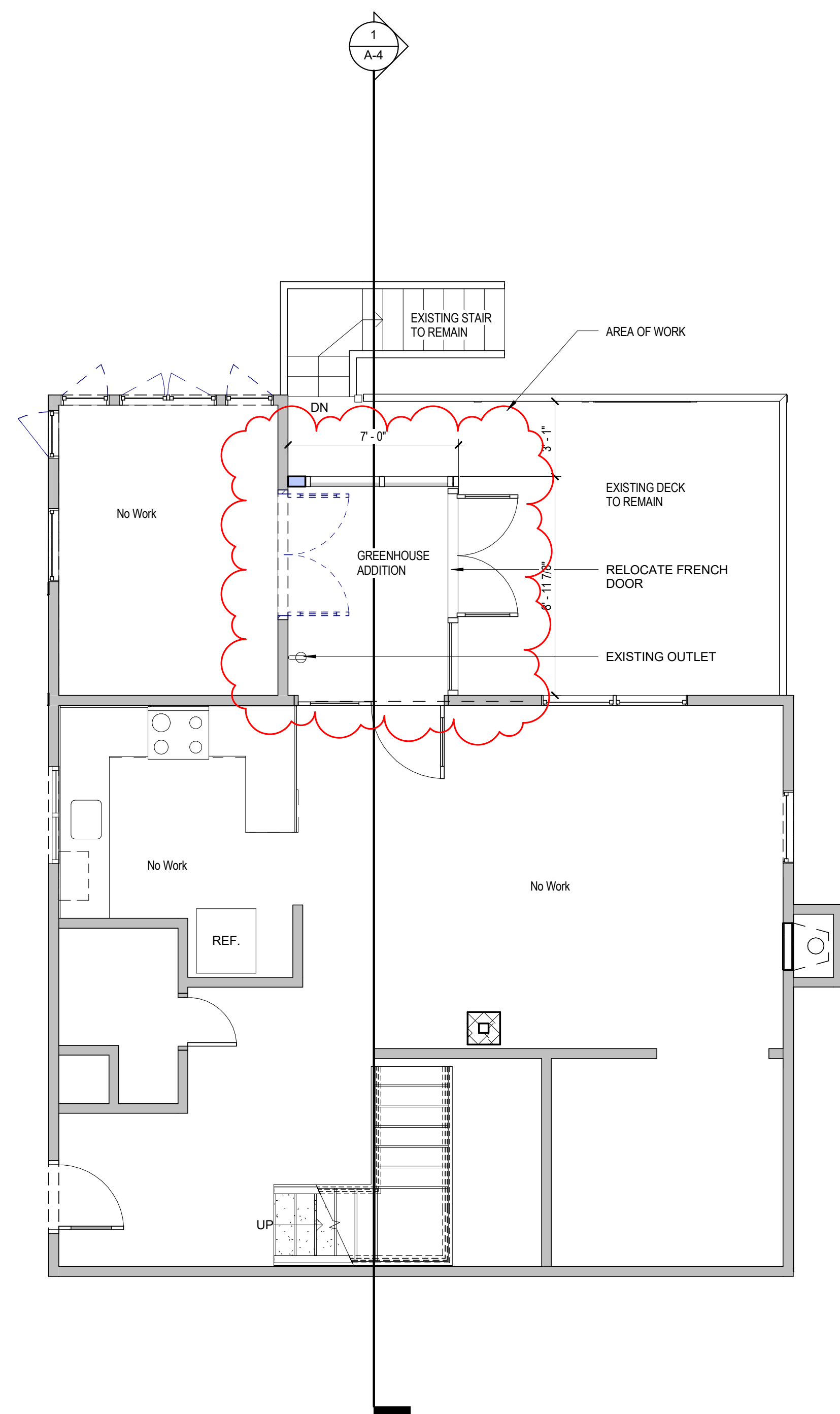




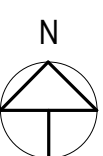
**3** SITE PLAN  
A-1 1" = 40'-0"

VOLUME OF EXISTING HOUSE EXCLUDING PREVIOUS SHED (NOT PERMITTED BY PREVIOUS OWNER) = 19,560 CU FT  
 VOLUME OF GREENHOUSE ADDITION AND SHED = 1,919 CU FT  
 TOTAL VOLUME INCREASE OF 10%



**960 SEASHORE AVE**  
PEAKS ISLAND, ME

NO.	DESCRIPTION	DATE
1	Revision 1	Date 1



CONTENT:	
PLAN	
DRAWN BY:	Author
PROJECT NO.:	0000
DATE:	Spring 2016
REVISED:	
SCALE:	As indicated
<b>A-1</b>	
Project Phase	
<b>100% CD</b>	
<small>COPYRIGHT © 2011 BY LAVALLEE-BRENSINGER PROFESSIONAL ASSOCIATION. ALL RIGHTS RESERVED. NO REPRODUCTION WITHOUT PERMISSION.</small>	

I:\data\W\Oce\Revised\Serve.dwg\man\W\Documents\Unlabeled\Serve Project 2016.rvt 9/20/16 9:28:55 PM