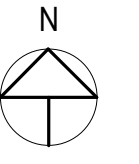


Client Name

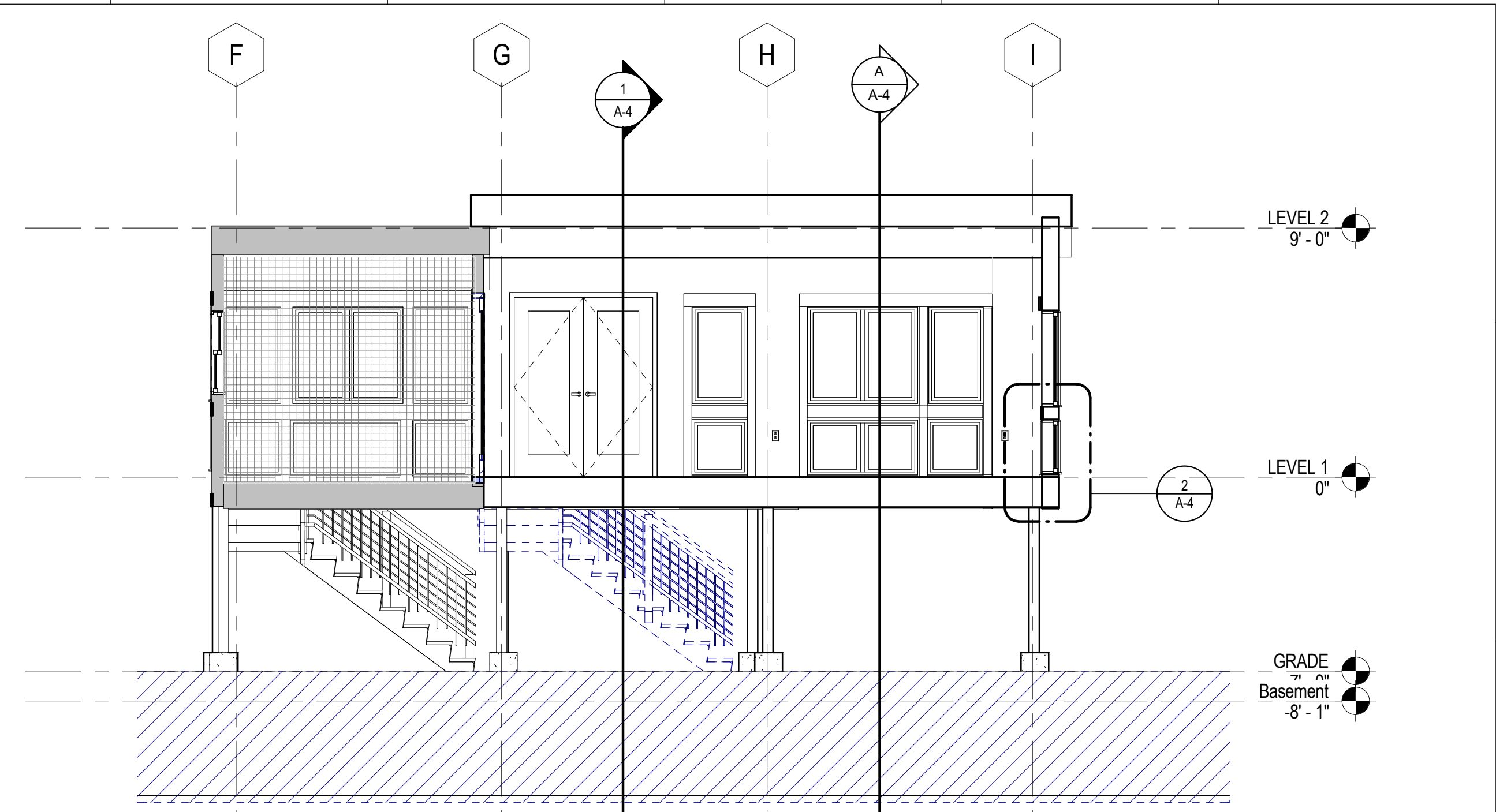
Additions and Renovations

960 Seashore Ave
Peaks Island, Maine

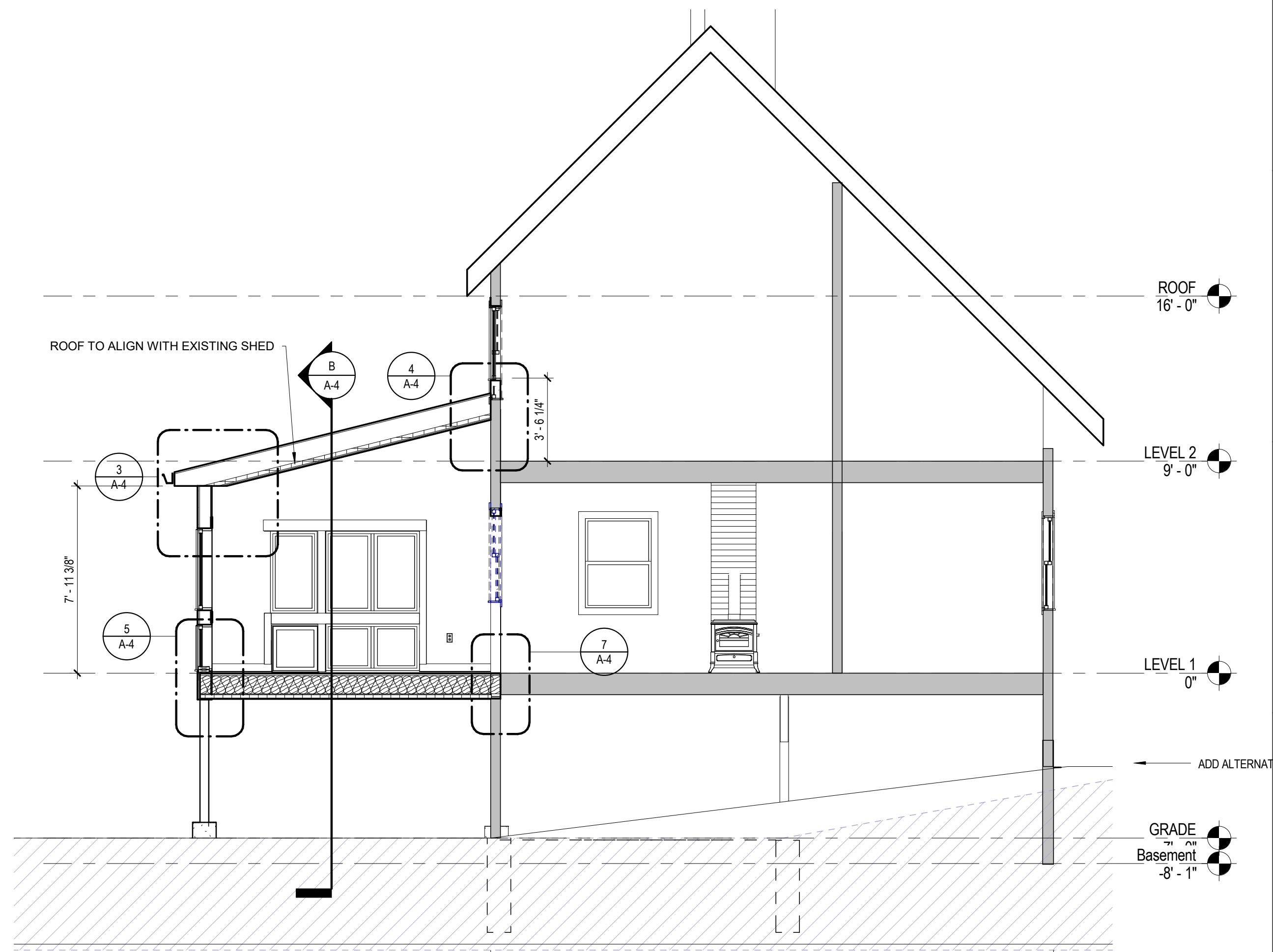
NO.	DESCRIPTION	DATE



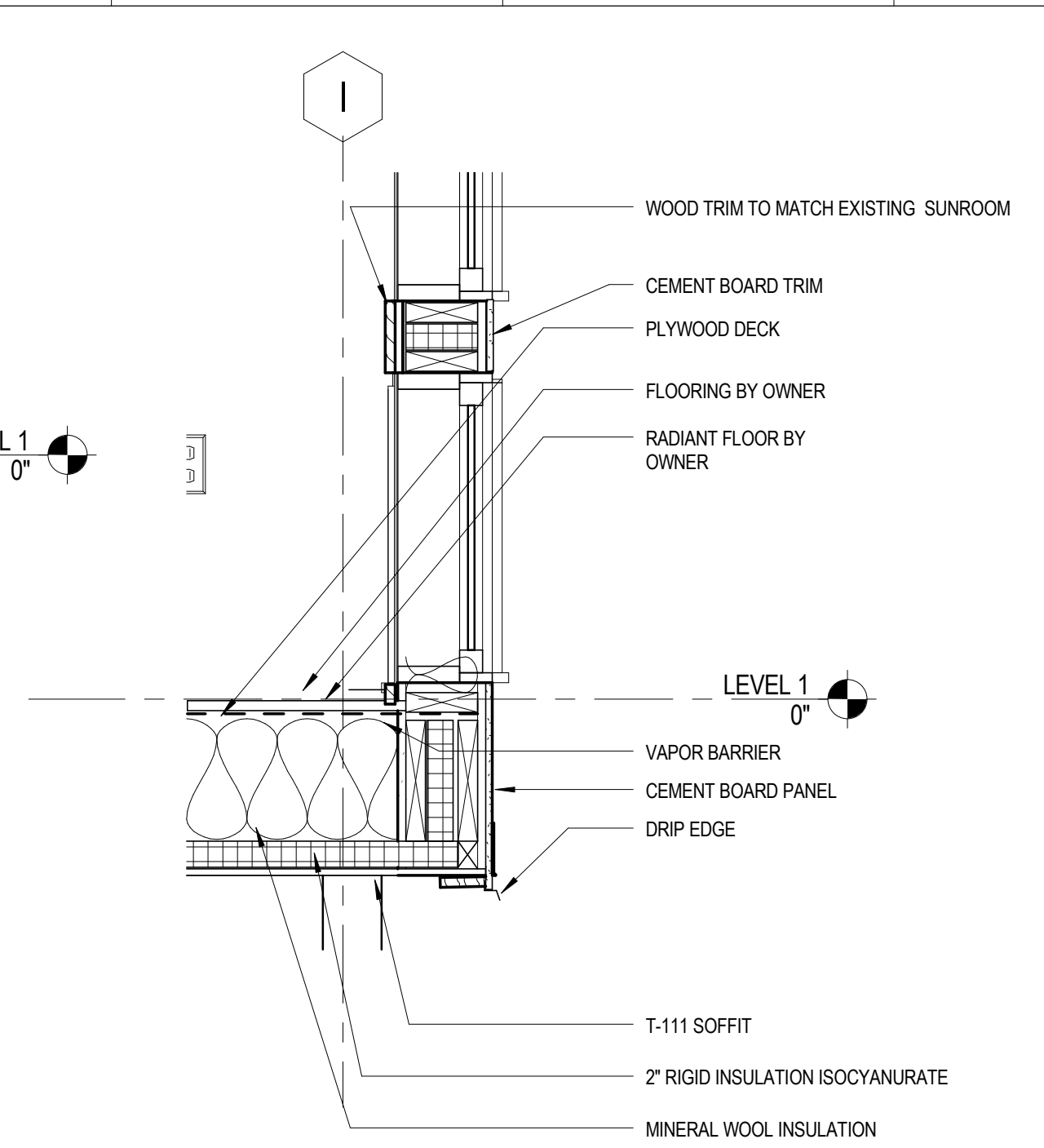
CONTENT: SECTION	
DRAWN BY:	Author
PROJECT NO.:	0000
DATE:	xx/xx/09
REVISED:	
SCALE:	As indicated
A-4	
Project Phase 100% CD	
<small>COPYRIGHT © 2011 BY LAVALETTE-BRENSINGER PROFESSIONAL ASSOCIATION. ALL RIGHTS RESERVED. NO REPRODUCTION WITHOUT PERMISSION.</small>	



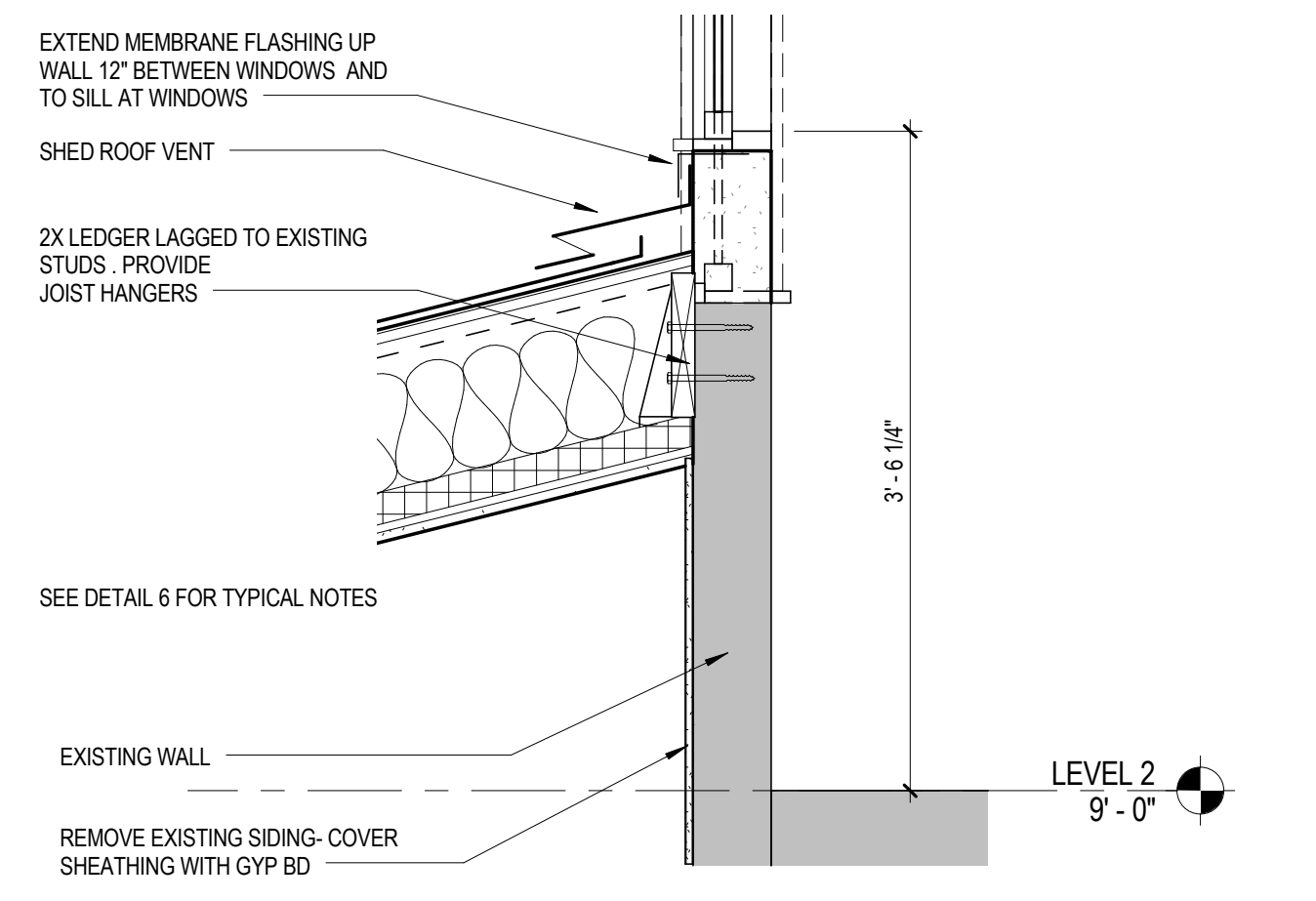
B BUILDING SECTION
1/4" = 1'-0"



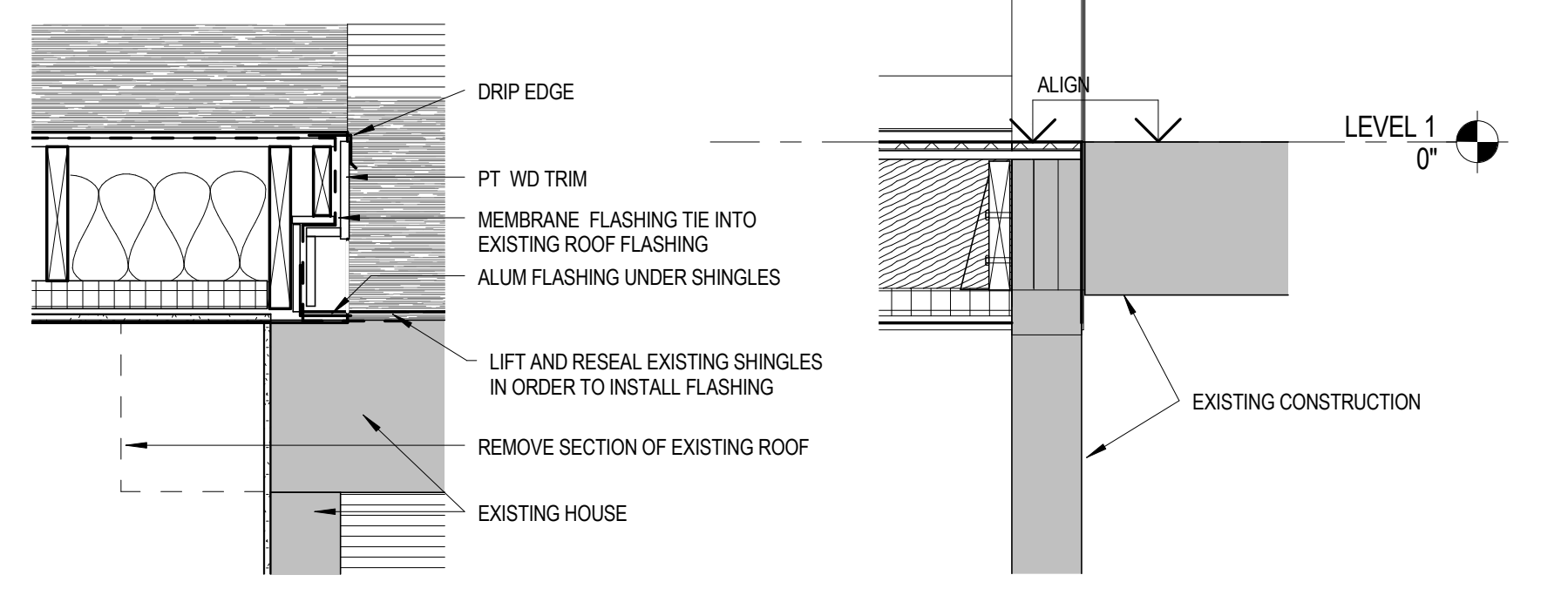
A BUILDING SECTION
1/4" = 1'-0"



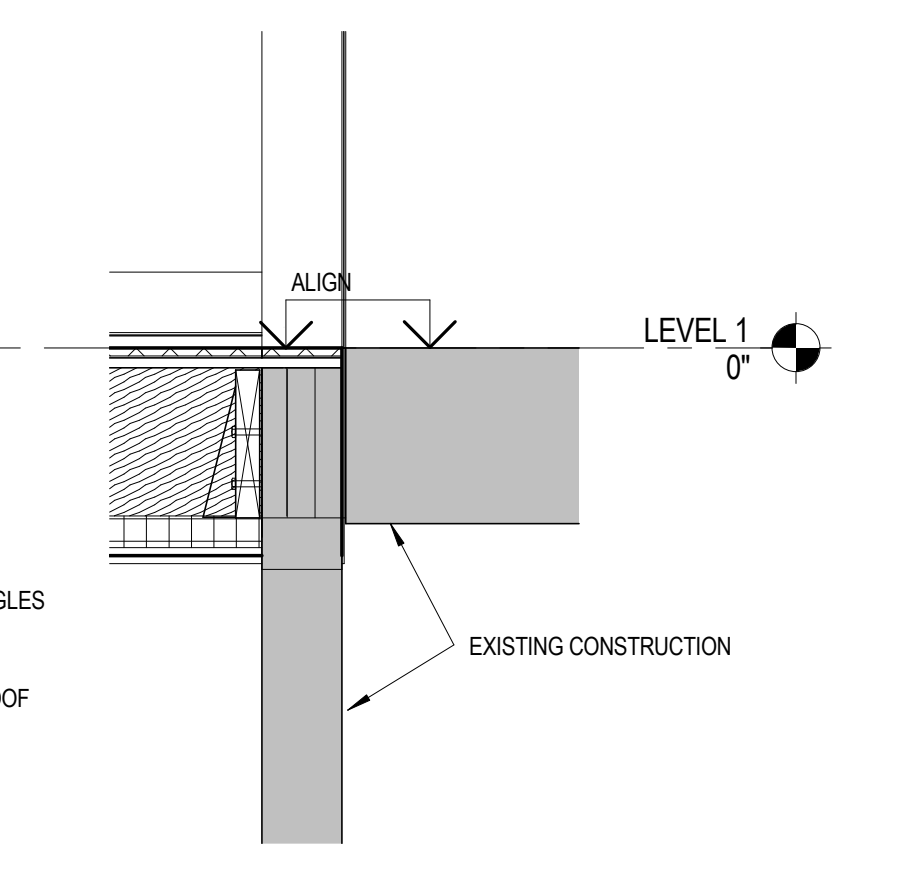
2 FLOOR DETAIL
1" = 1'-0"



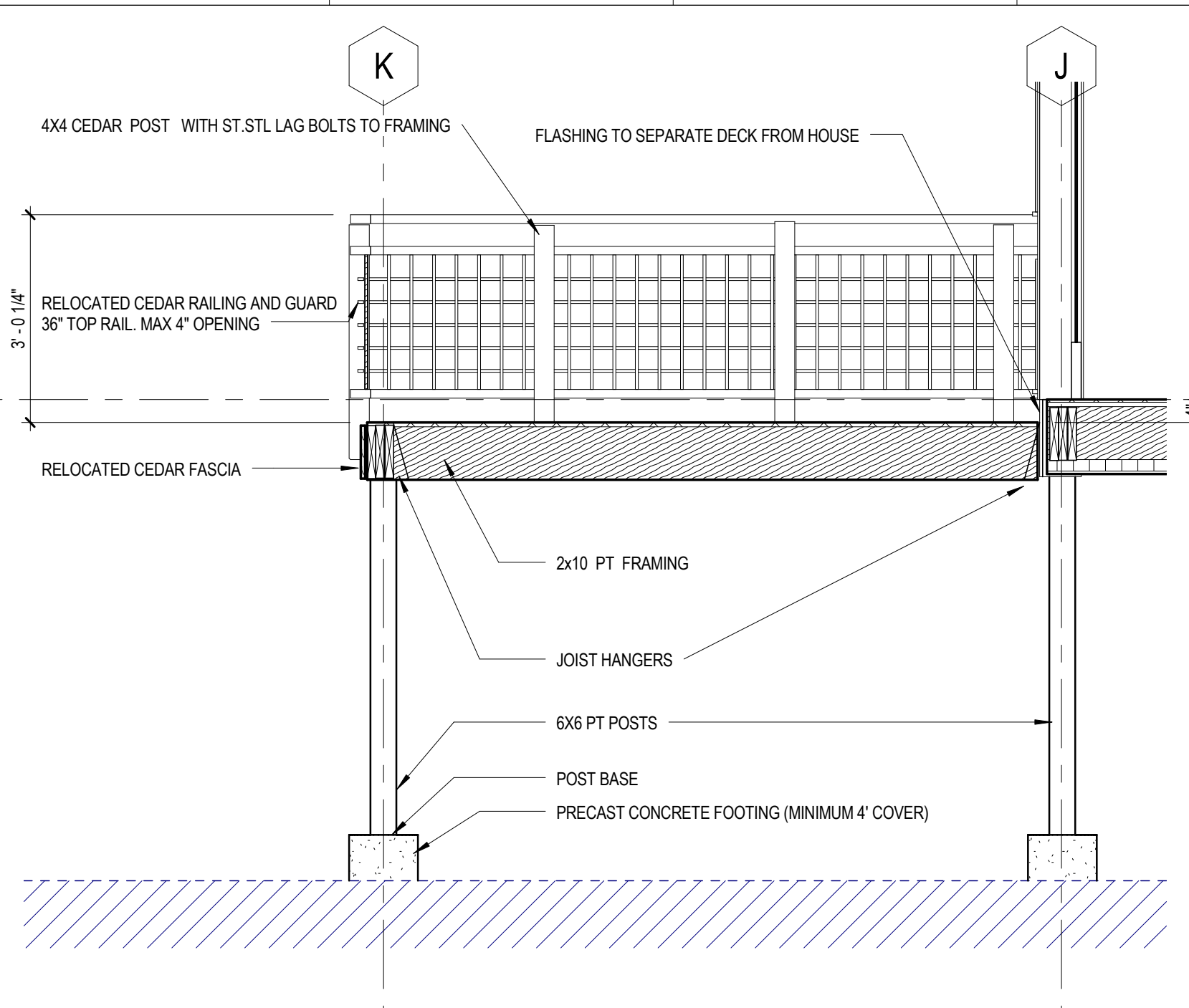
4 SHED ROOF DETAIL
1" = 1'-0"



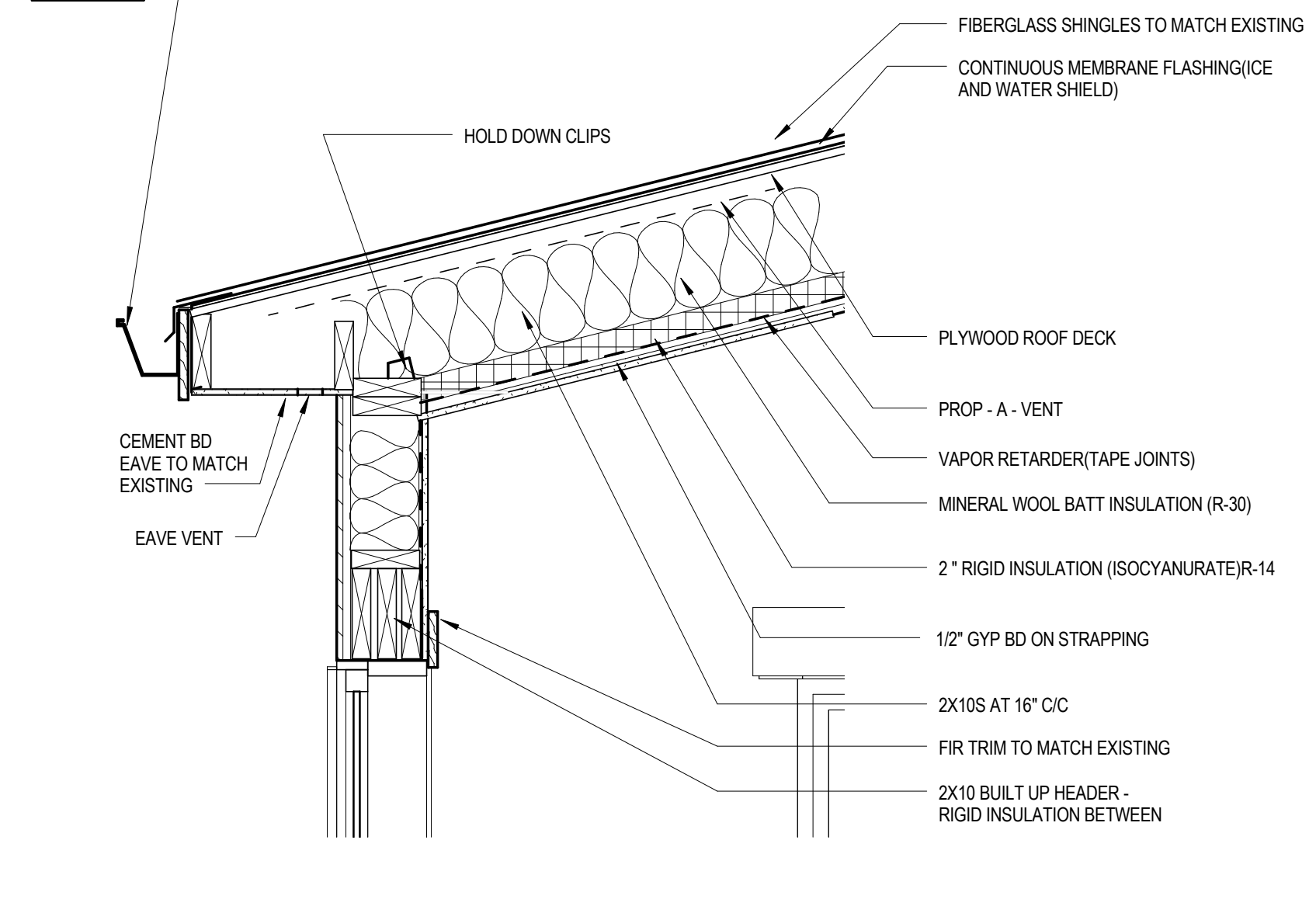
6 ROOF STEP DETAIL
1" = 1'-0"



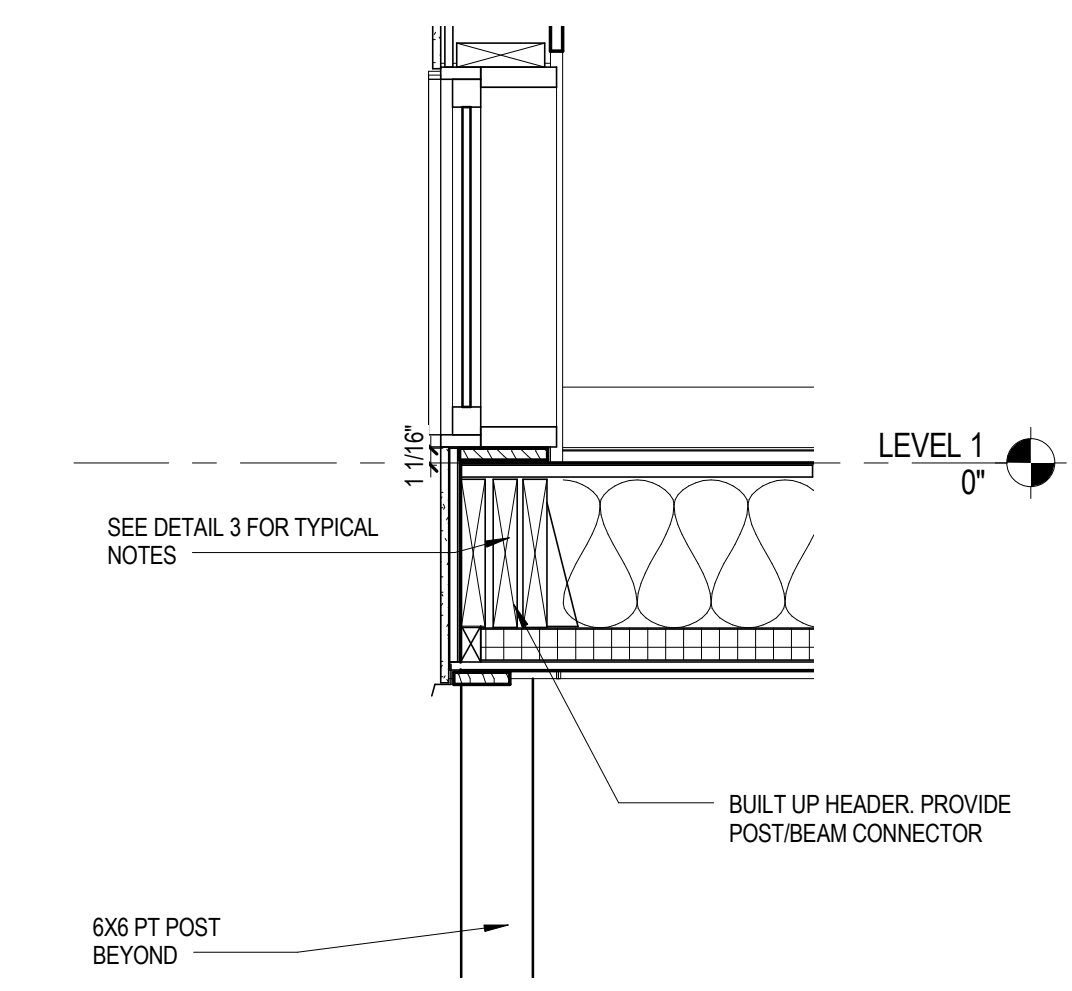
7 ADDITION TIE IN DETAIL
1" = 1'-0"



1 SECTION AT DECK
1/2" = 1'-0"



3 EAVE DETAIL
1" = 1'-0"



5 SILL DETAIL
1" = 1'-0"

4/13/2016 7:43:53 PM \\dab\MyDocRefrnc\Steve.dajman\My Documents\Peaks031516.rvt