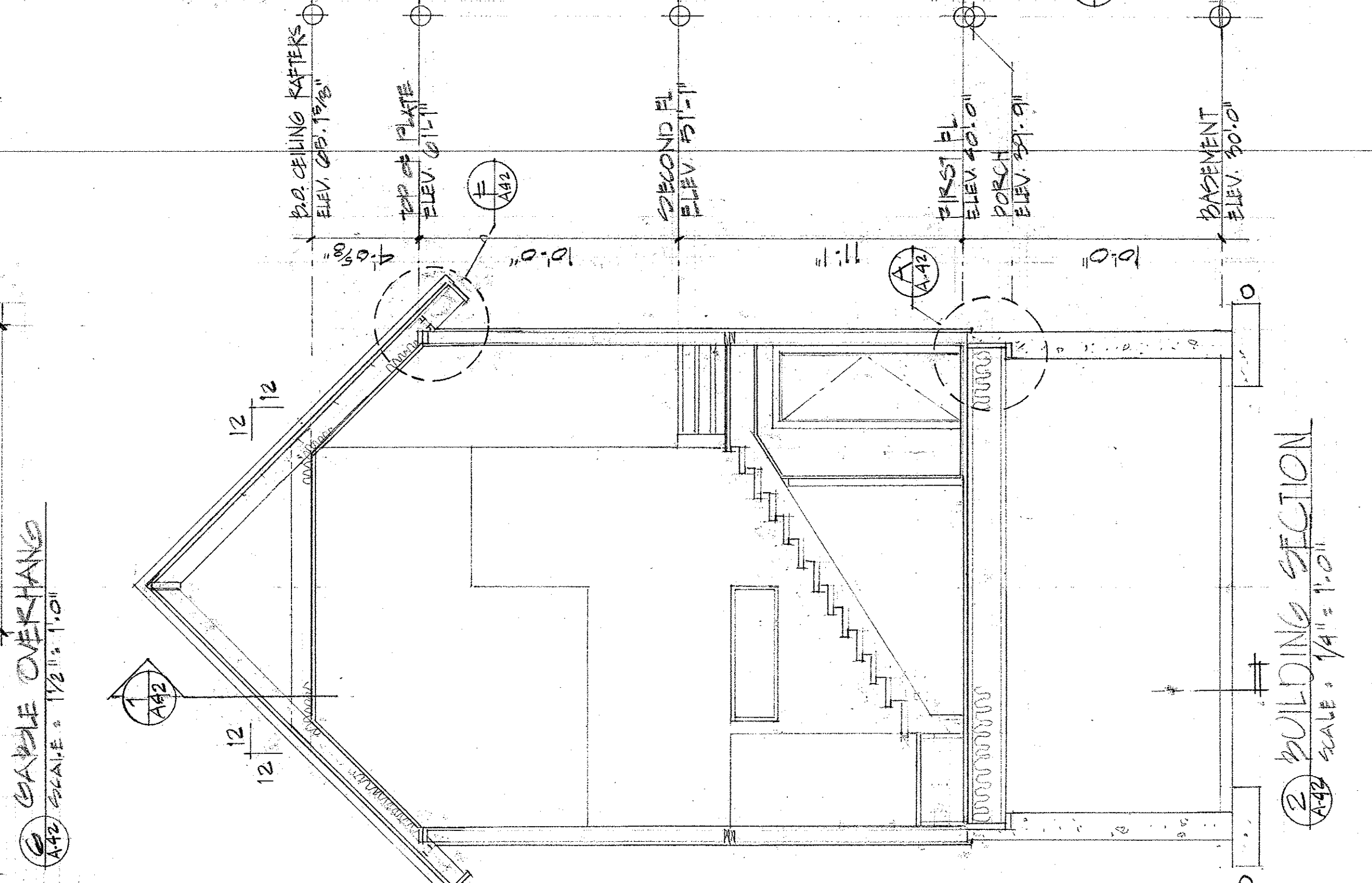
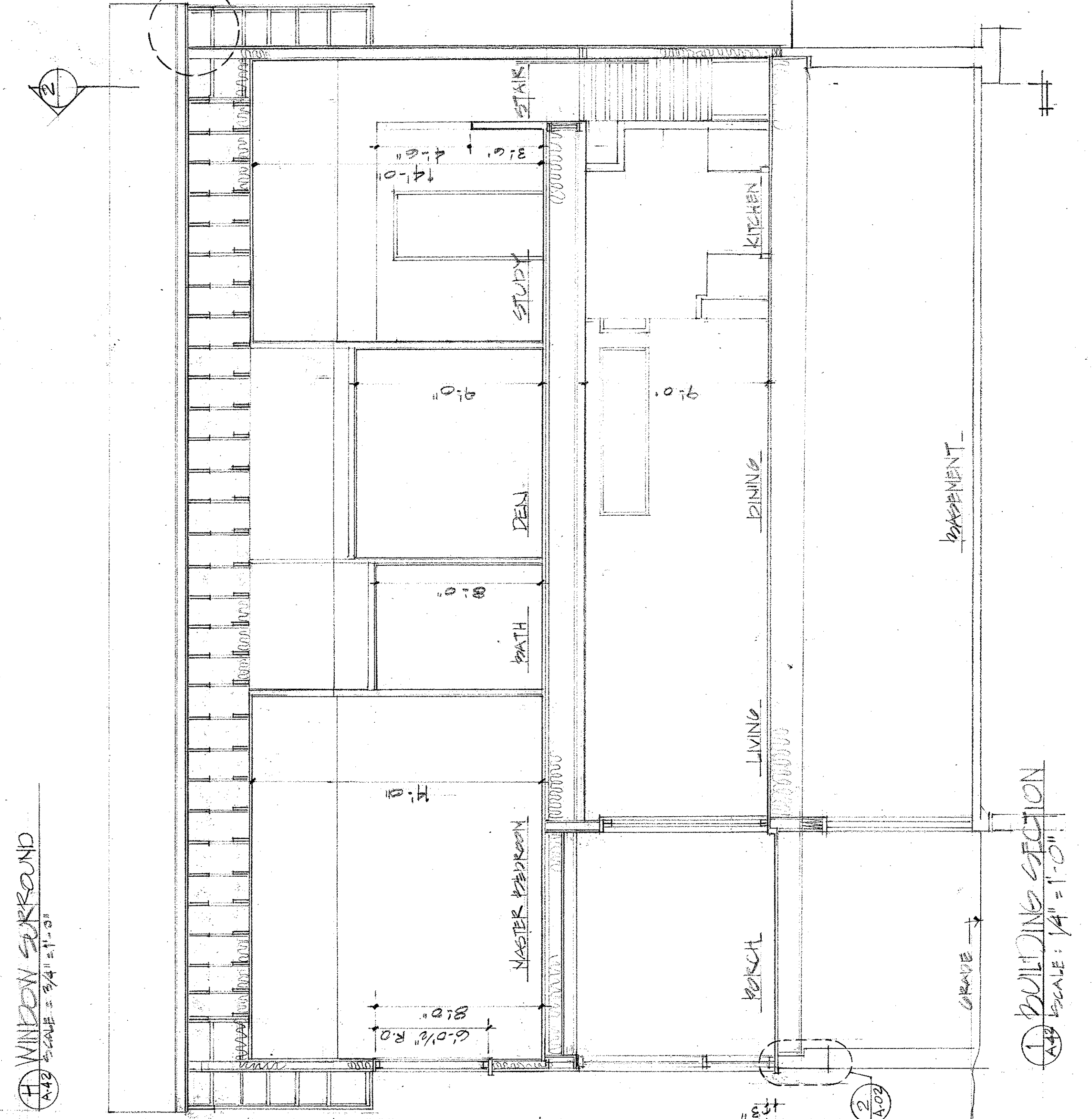
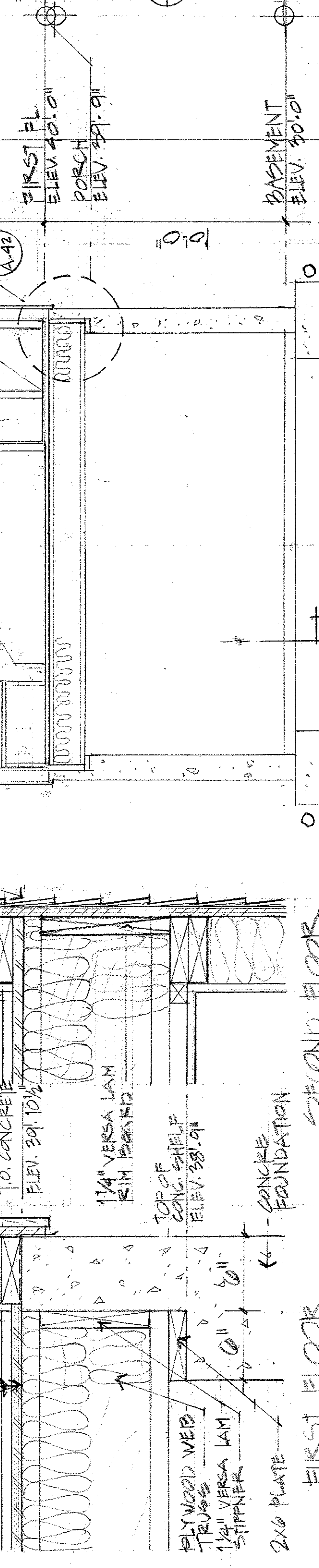
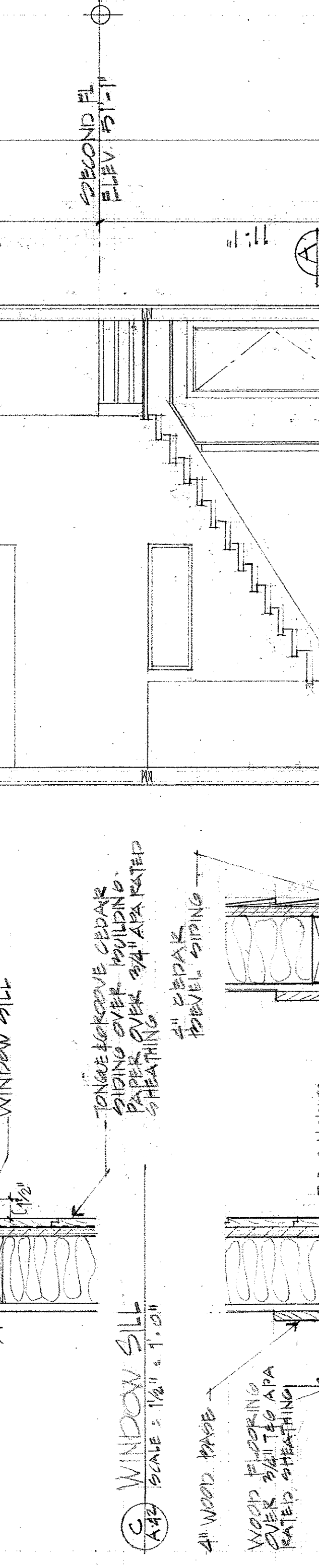
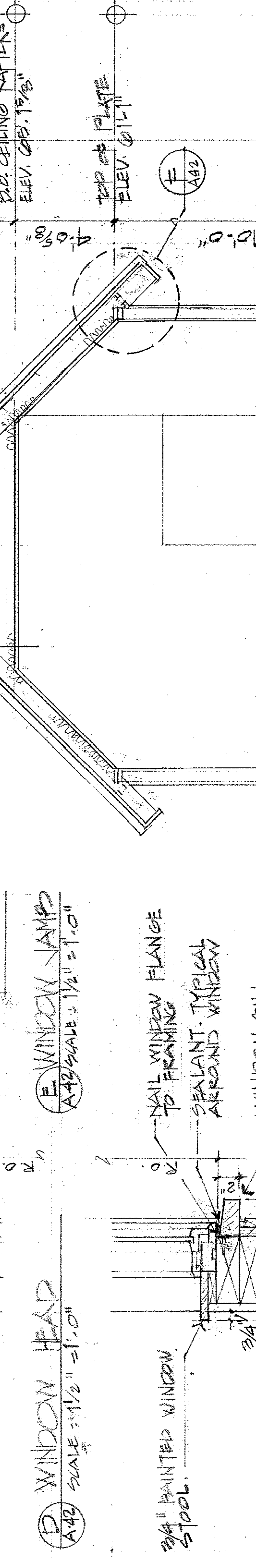
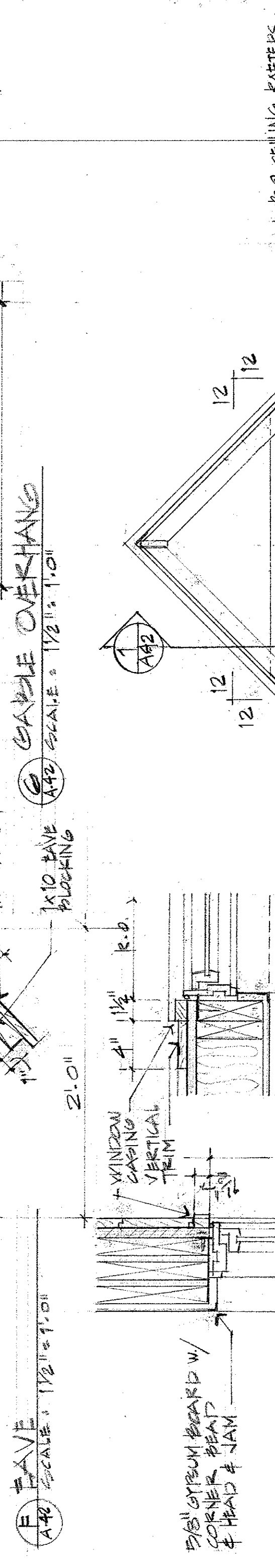
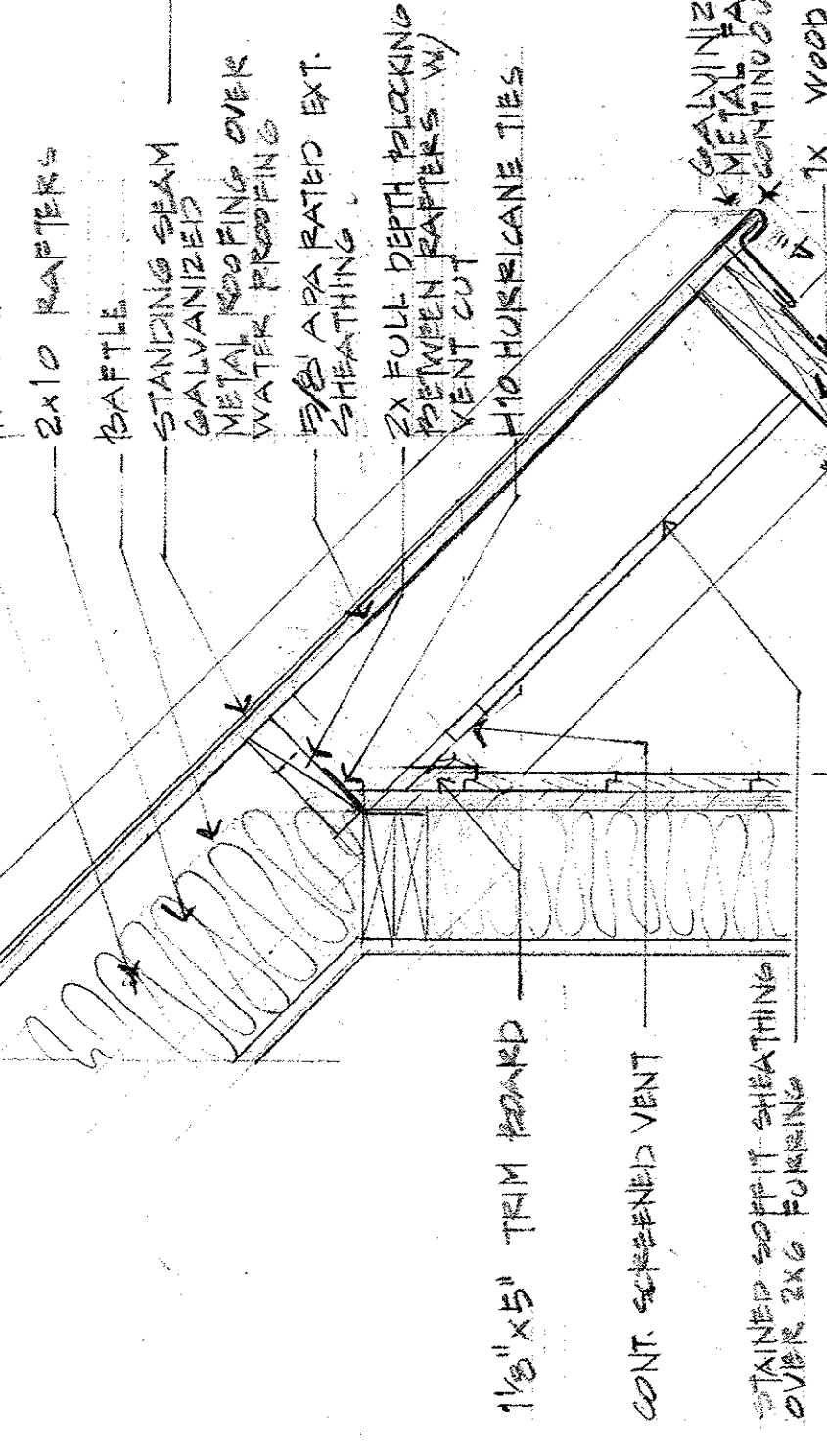
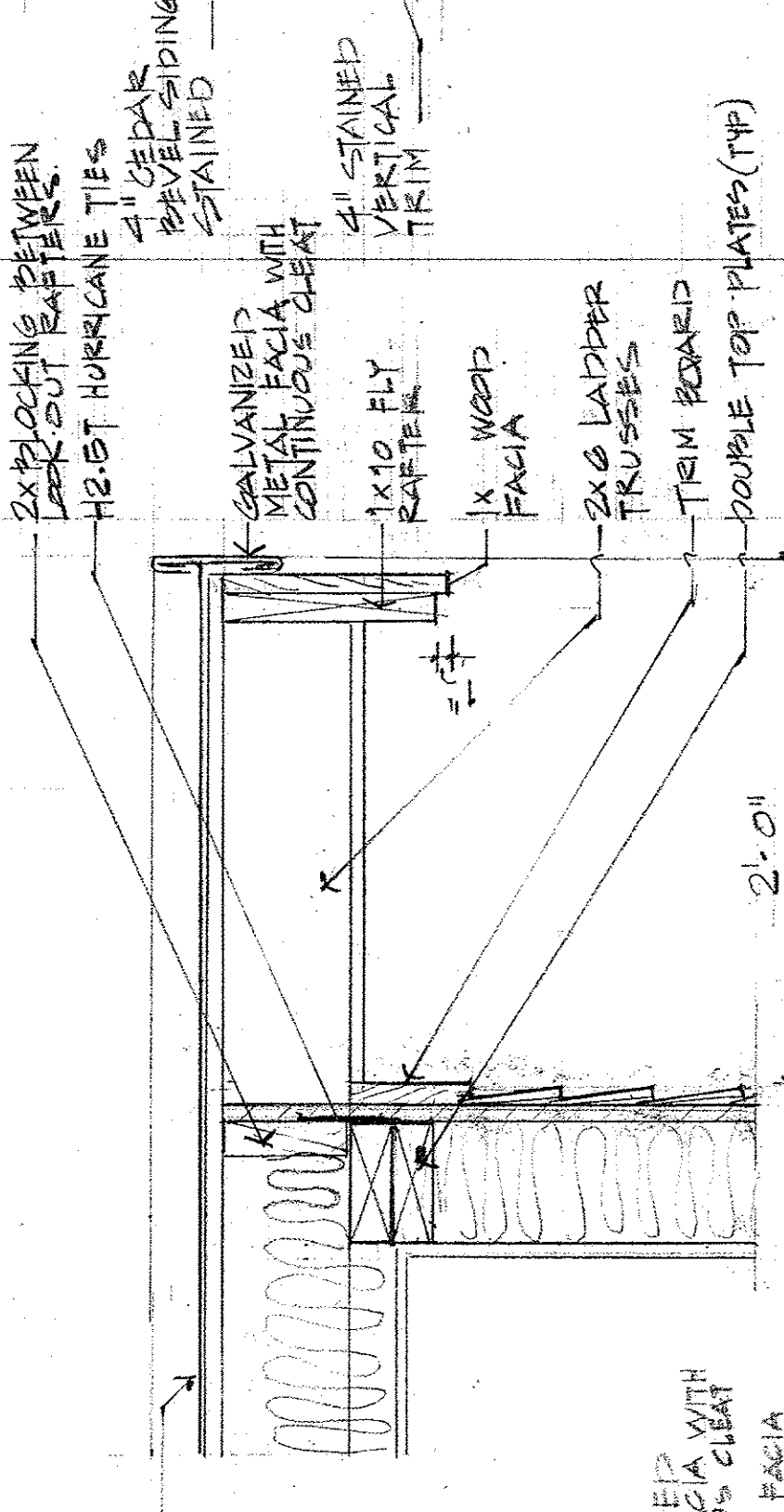
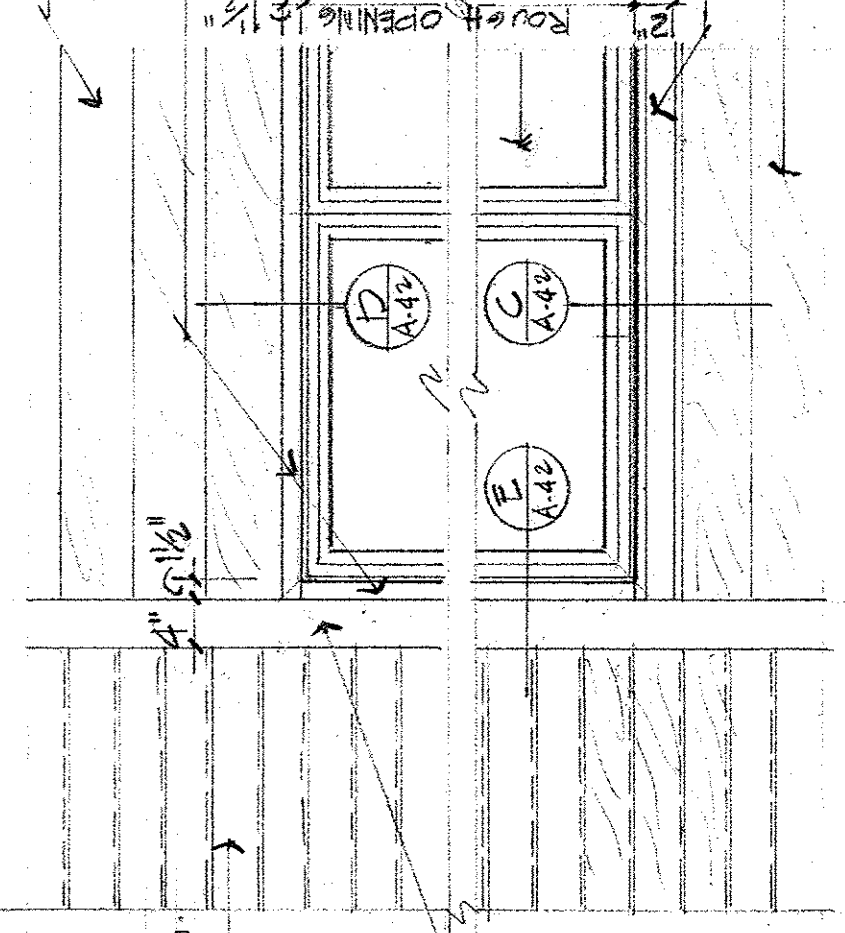


NOTES

1. TYPICAL EXTERIOR CONSTRUCTION
 - 2x6 WOOD STUDS
 - 5/8" GWS INSIDE FACE
 - STAINED WOOD SIDING
 - BUILDING PAPER OVER 3/4" TRIM
 - APA RATED SHEATHING OVER 3/4" TRIM
 - FILL CAVITY WITH MIN. 19 R VALUE INSULATION
2. TYPICAL ROOF CONSTRUCTION
 - SEE DETAIL F THIS DRAWING

2" TONGUE & GROOVE CEDAR SIDING
 1/2" x 1/2" STAINED CASING
 WINDOW UNIT
 2x6 WOOD SILL - STAINED
 2" TONGUE & GROOVE CEDAR SIDING



A42

BUILDING SECTIONS
 EXTERIOR DETAILS

MAC SAAC DELOUCIA SUMMER RESIDENCE
 499 ISLAND AVENUE, PEAKS ISLAND, PORTLAND, MAINE

DATE: 29 DEC 2010

DESIGN: A. MAHIOUS
 114 POND STREET, WINCHESTER, MA 01890