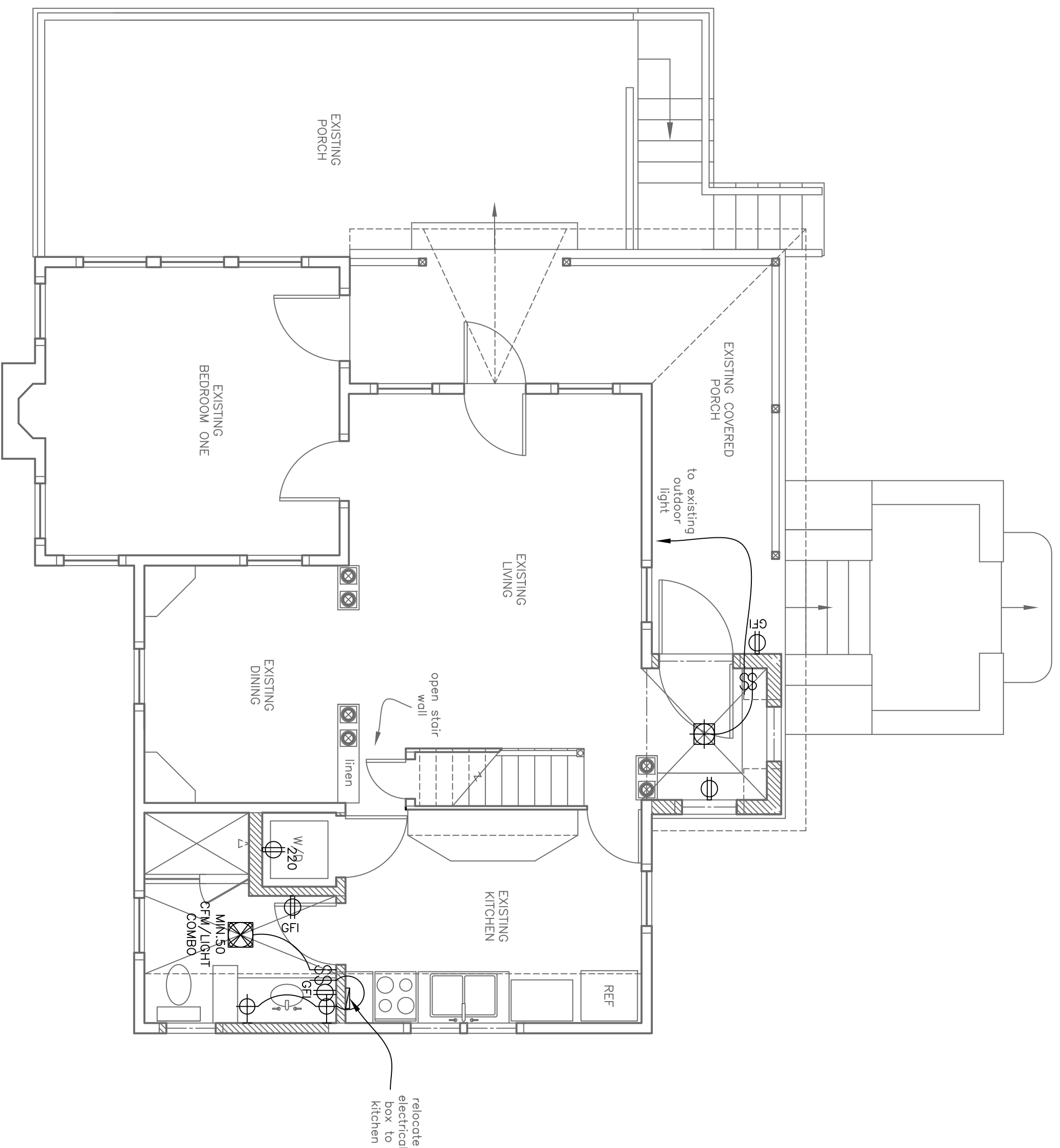


First Floor
Power & Lighting
Plan



A Proposed Power & Lighting Plan
1/4" = 1'-0"



PROJECT

"Katie's Cottage"
William's Residence

224 Pleasant Avenue
Peaks Island, Me.
04108

DATE	11.30.12	REVISED	12.15.12
SCALE	1/4" = 1'-0"	DRAWN BY	Rachel

NOTES

- undercounter
- ⊕ duplex
- ⊕ ground-fault circuit interrupter
- ⊕ 220 volt
- ⊕ switch
- ⊕ 3-way switch
- ⊕ dimmer switch
- ⊕ smoke detector
- ⊕ minimum 50 dfm with fan
- ⊕ MIN. 50 CFM/LIGHT COMBO
- ⊕ ceiling mount pendant light fixture
- ⊕ recessed can light fixture
- ⊕ wall sconce light fixture
- ⊕ wet location wall sconce light fixture
- ⊕ fan lighting
- ⊕ basement broom switched
- undercounter
- ⊕ ceiling fan
- ⊕ ceiling fan
- ⊕ phone jack
- ⊕ DSL
- ⊕ CABLE
- ⊕ CAT 5
- ⊕ central vacuum
- ⊕ compact fluorescent recessed fan