

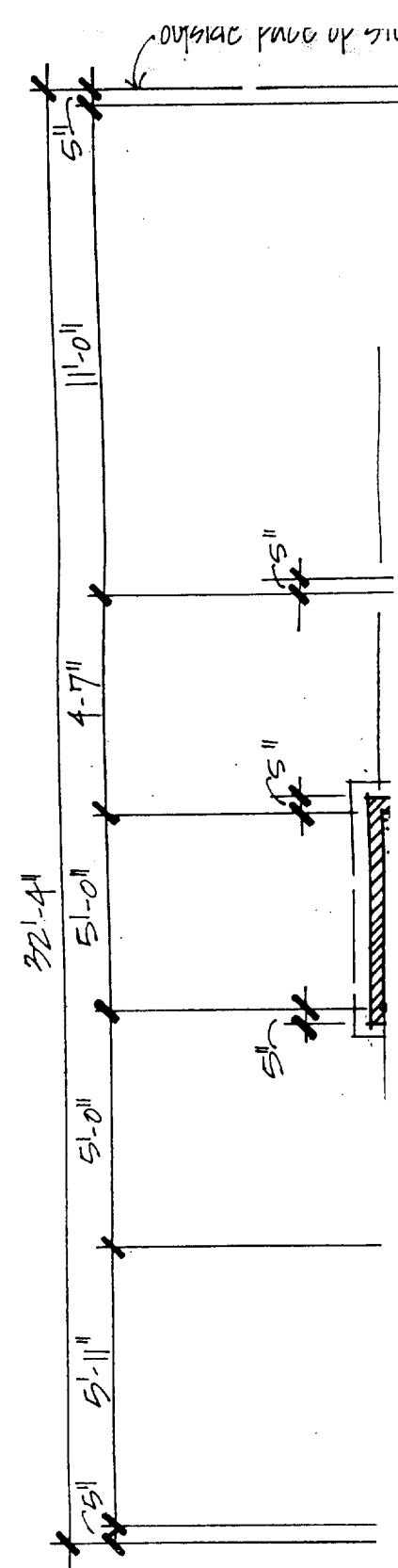
	EXTERIOR FLOOD LIGHTS		THREE WAY
	FLUORESCENT STRIPS		PUSH BUTTON
	WALL MOUNTED SMOKE DETECTOR		DIMMER/RHEOSTAT

Schedule For Beams & Headers

Unless Noted Otherwise on Plans.

SPAN :	FRAMING :
Up to 4'-0"	3-2x8's w/ Plywood Shims
4'-1" to 6'-0"	2-2x8's
6'-1" to 8'-0"	2-2x10's (3) 2x10's w/ Plywood Shims
8'-1" to 10'-0"	2-2x12's (3) 2x12's w/ Plywood Shims
10'-1" to 11'-0"	2-2x12's w/ 1"x11" cont. Plywd. Plate
11'-1" to 14'-0"	2-2x12's w/ 1"x11" steel flitch plate

These spans and headers are based on design loads given for this plan and on the requirements of the Standard Building Code. Contractor is responsible for upgrades to these standards if required by any local government codes or standards.



① ②
FOUNDATION NOTES

- ① A ALL EXTERIOR FOOTINGS shall extend below the FROST LINE. PROVIDE UNDERSIDE OF FOOTING A MINIMUM OF 4'-0" BELOW ADJACENT FINISHED GRADE.
- ② B PROVIDE Filter Fabric COVER OVER TOP OF Tile drain. [IRC SECTION R405]
- ③ C PROVIDE BASEMENT VENTILATION ACCORDING TO IRC R408.
- ④ D

CITY OF PORTLAND, MAINE
APPROVED CONSTRUCTION PLANS

APR 13 2005

SUPERSEDES ALL
PRIOR DATED PLANS

Schedule For Beams & Headers

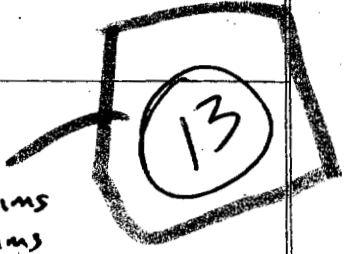
Unless Noted Otherwise on Plans.

SPAN:

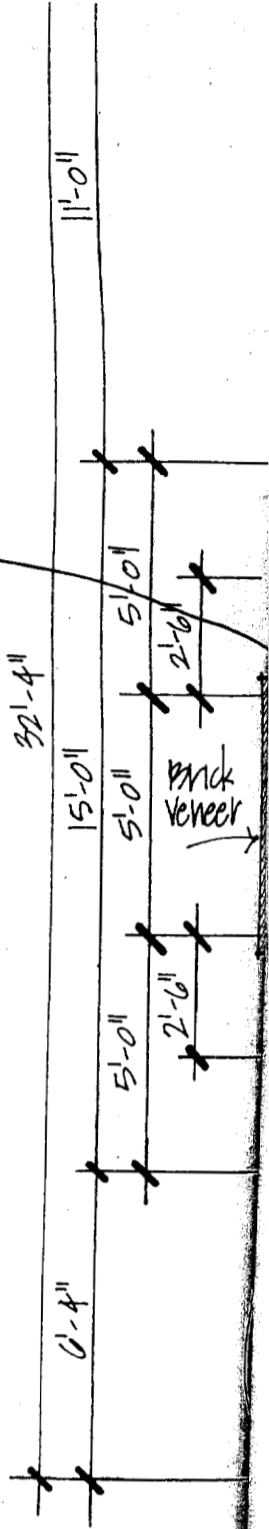
FRAMING:

0'-0" to 4'-0"	2 2x6's
4'-1" to 6'-0"	2 2x8's
3'-1" to 6'-0"	(3) 2x10's w/ Plywood Shims
6'-1" to 9'-0"	(3) 2x12's w/ Plywood Shims
10'-1" to 11'-0"	2 2x12's w/ 1"x11" cont. Plywood Plate
11'-1" to 14'-0"	2 2x12's w/ 1"x11" steel flitch plate

These spans and headers are based on design loads given for this plan and on the requirements of the Standard Building Code. Contractor is responsible for upgrades to these standards if required by any local government codes or standards.



Chimney clearance
To be min
1" Between
combustibles



(6)

1ST FLOOR FRAMING NOTES

- (A) PROVIDE APA RATED STURD-I-FLOOR, Exposure 1, 4-ply 3/4" T&G, glued & nailed to FLOOR STRUCTURE
- (B) Wall sheathing shall be APA Rated Sheathing Exposure 1, 1/2" Thick. 4-Ply Minimum
- (C) Fastener schedule: see attached.
- (D) WOOD DECKING SHALL BE 2X6 (Nominal) S.P.F Commercial grade or better. OFFSET ADJACENT SPLICES A MINIMUM OF 2'-0".

(15)

- (E) MAINTAIN A MINIMUM OF 6'-8" HEADROOM AT STAIR
- (F) Verify Floor to Floor Height is 9'-0"
[CONTRACTOR SHALL NOTIFY Engineer of ANY Discrepancies of Field Conditions Prior to Construction]

CITY OF PORTLAND, MAINE
APPROVED CONSTRUCTION PLANS

APR 13 2005

SUPERSEDES ALL
CORRELATED PLANS

ELECTRICAL SYMBOLS		
LIGHT FIXTURES	CONVIENCE OUTLETS	
SURFACE MOUNTED @ CLG.	115 VOLT DUPLEX	
WALL MOUNTED	115 VOLT DUPLES SPLIT WIRED	
RECESSED CEILING LIGHT	230 VOLT OUTLET	
RECESSED EYEBALL SPOT	115 VOLT GROUNDED	
RECESSED PINHOLE SPOT	115 VOLT DUPLEX WEATHER PROOF	
RECESSED WALL WASHER	SPECIAL PURPOSE	
EXHAUST FAN W/LIGHT MOUNTED @ CEILING	PHONE JACK	
LIGHT W/PULL CHAIN	TELEVISION JACK	
CEILING PADDLE FAN WITH OR W/O LIGHT KIT	SWITCHES	
EXTERIOR FLOOD LIGHTS	SINGLE POLE	
FLUORESCENT STRIPS	THREE WAY	
CEILING MOUNTED SMOKE DETECTOR	PUSH BUTTON	
	DIMMER/RHEOSTAT	

(17) Hard wired smoke detectors with Battery Back up ON separate circuit to be installed in EACH Bedroom and in common areas on EACH Floor and Basement

Schedule For Beams & Headers
Unless Noted Otherwise on Plans.

SPAN:	FRAMING:
Up to 4'-0"	2-2x6's
4'-1" to 6'-0"	2-2x8's
6'-1" to 8'-0"	2-2x10's
8'-1" to 10'-0"	2-2x12's
10'-1" to 11'-0"	2-2x12's w/1"x11" cont. Plyw'd. Plate
11'-1" to 14'-0"	2-2x12's w/1"x11" steel flitch plate

These spans and headers are based on design loads given for this plan and on the requirements of the Standard Building Code. Contractor is responsible for upgrades to these standards if required by any local government codes or standards.

DESIGN KEYNOTES

EASTERN ENGINEERED WOOD PRODUCTS
SPECIFIER GUIDE

SNOW Load Design = 50 psf
 $C_f = 39$ psf
 Asphalt shingles
 1/2 APA Rated Plywood
 Misc DL

- ① 3 1/2 x 11 3/8 F_b = 3080 DF (Versa-Lam) [GIRDER TRUSS OPT] 15 psf
- ② 3 1/2 x 11 3/8 F_b = 3080 DF (ALTERNATE) (Versa-LAM)
- ③ (3) 2x12 Header SPF No 2 or Better OR (1) 3 1/2 x 9 1/2 VL F_b = 3100 SP (TYP @ all Exterior bearing walls w/ OPENINGS LESS THAN 6'-0")
- ④ (3) 2x10 Header, SPF No 2 or Better OR (1) 1 3/4 x 9 1/2 F_b = 3100 SP VL (Versa-LAM)
- ⑤ 4x10's @ 2'-0" o/c S.P.F SELECT STRUCTURAL
- ⑥ BCI 450's SERIES JOIST; 9 1/2" BCI 450 @ 16" o/c

$W_{TL} = 15 + 39 = 54$ psf Roof load

ROOF FRAMING NOTES

- (A) PROVIDE Min 1/2" APA Rated Plywood w/ span Rating 32/16 Minimum.
- (B) CONNECTION OF STRUCTURAL MEMBERS SHALL BE ACCORDING to MANUFACTURERS PRINTED INSTRUCTIONS.
- (C) ATTIC ACCESS SHALL BE A MINIMUM 22" x 30" and at least 30" of Headroom.
- Load Bearing wall Interior

cond Floor Plan

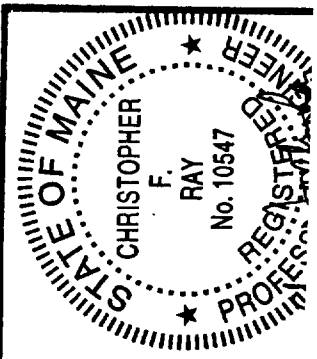
ROOF FRAMING PLAN

CITY OF PORTLAND, MAINE
APPROVED CONSTRUCTION PLANS
APR 13 2005
SUPERSEDES ALL PRIOR DATED PLANS

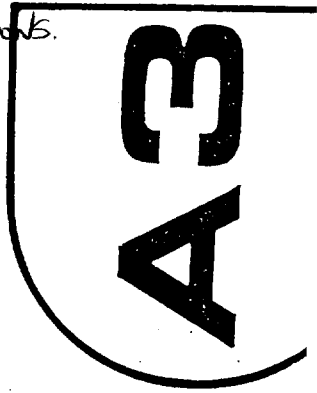
THE NORRIS GROUP, INC
ARCHITECTS
3340 Peachtree Road, NE
Suite 1770
Atlanta, Georgia 30326

SIGNATURE PLAN

NO: 4049



3392



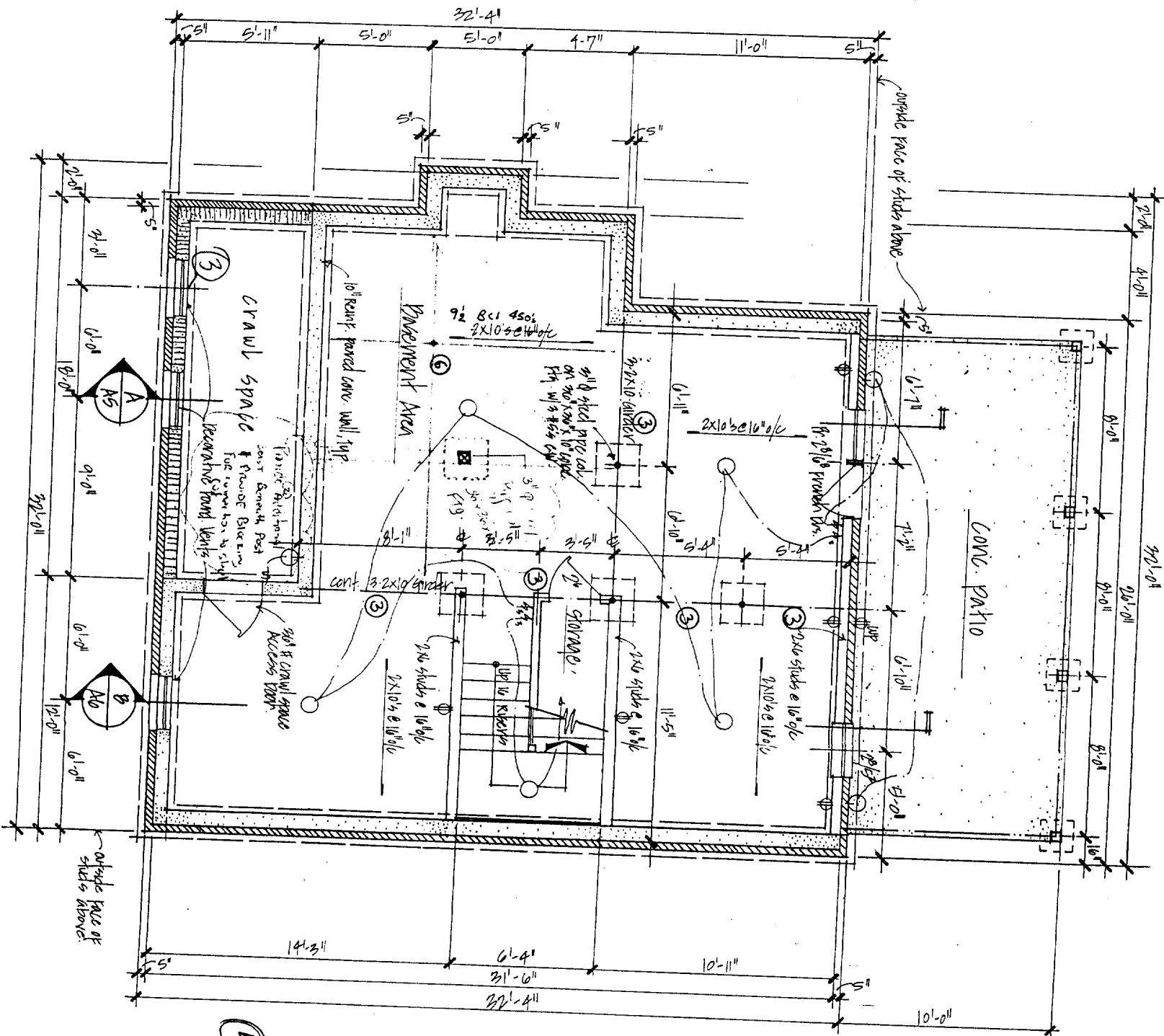
CITY OF PORTLAND, MAINE
 APPROVED CONSTRUCTION PLANS
 APR 18 2005
 SUPERSEDES ALL
 PRIOR DATED PLANS

ELECTRICAL SYMBOLS	
○ SURFACE MOUNTED @ CLC.	○ CONVENIENCE OUTLETS
○ WALL MOUNTED	○ 115 VOLT DUPLEX
○ RECESSED CEILING LIGHT	○ 115 VOLT DUPLEX SPLIT HIRED
○ RECESSED EYEBALL SPOT	○ 230 VOLT OUTLET
○ RECESSED PINHOLE SPOT	○ 115 VOLT GROUNDING
○ RECESSED WALL WASHER	○ 115 VOLT DUPLEX WEATHER PROOF
○ EXHAUST FAN W/LIGHT MOUNTED @ CEILING	○ SPECIAL PURPOSE
○ LIGHT W/PULL CHAIN	○ PHONE JACK
○ CEILING PADDLE FAN WITH OR W/O LIGHT KIT	○ TELEVISION JACK
○ EXTERIOR FLOOD LIGHTS	SWITCHES
○ FLUORESCENT STRIPS	○ SINGLE POLE
○ WALL MOUNTED SMOKE DETECTOR	○ THREE WAY
	○ PUSH BUTTON
	○ DIMMER/RHEOSTAT

Schedule For Beams & Headers
 Unless Noted Otherwise on Plans.

SPAN: Up to 4'-0" 2-2x8's
 4'-11" to 6'-0" 2-2x8's
 6'-1" to 8'-0" 2-2x10's
 8'-1" to 10'-0" 2-2x12's
 10'-1" to 11'-0" 2-2x12's w/1"x11" cont. ply'd. plate
 11'-1" to 14'-0" 2-2x12's w/1"x11" steel litch plate
 FRAMING: These spans and headers are based on design loads given for this plan and on the requirements of the Standard Building Code. Contractor is responsible for upgrades to these standards if required by any local government codes or standards.

- ① Foundation walls
- ② All exterior framing and floor joists below the finished floor shall be in accordance with the schedule above.
- ③ Provide floor joists with a minimum of 2" depth.
- ④ Provide exterior finish and records to the City.

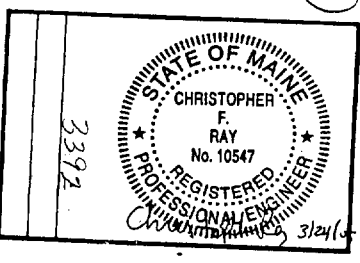


Basement Plan

Basement Floor Framing Plan

1/4" = 1'-0"

A1



SIGNATURE PLAN
 NO: 4049

THE NORRIS GROUP, INC.
 ARCHITECTS
 3340 Peachtree Road, NE
 Suite 1770
 Atlanta, Georgia 30326
 (404) 261-0313

APR 13 2005
 CITY OF PORTLAND, MAINE
 APPROVED CONSTRUCTION PLANS
 SUPERSEDES ALL
 PREVIOUS DATED PLANS

ELECTRICAL SYMBOLS	
○ SURFACE MOUNTED @ GLC.	⊕ 115 VOLT DUPLEX
○ WALL MOUNTED	⊕ 115 VOLT DUPLEX SPLIT WIRED
○ RECESSED CEILING LIGHT	⊕ 230 VOLT OUTLET
○ RECESSED EYEBALL SPOT	⊕ 115 VOLT GROUNDED
○ RECESSED PINHOLE SPOT	⊕ 115 VOLT DUPLEX WEATHER PROOF
○ RECESSED WALL WASHER	⊕ SPECIAL PURPOSE
○ EXHAUST FAN W/LIGHT MOUNTED @ CEILING	⊕ PHONE JACK
○ LIGHT W/PULL CHAIN	⊕ TELEVISION JACK
○ CEILING PADBLE FAN WITH OR W/O LIGHT KIT	SWITCHES
○ EXTERIOR FLOOD LIGHTS	⊕ SINGLE POLE
○ FLUORESCENT STRIPS	⊕ THREE WAY
○ WALL MOUNTED SMOKE DETECTOR	⊕ PUSH BUTTON
	⊕ DIMMER/RHEOSTAT

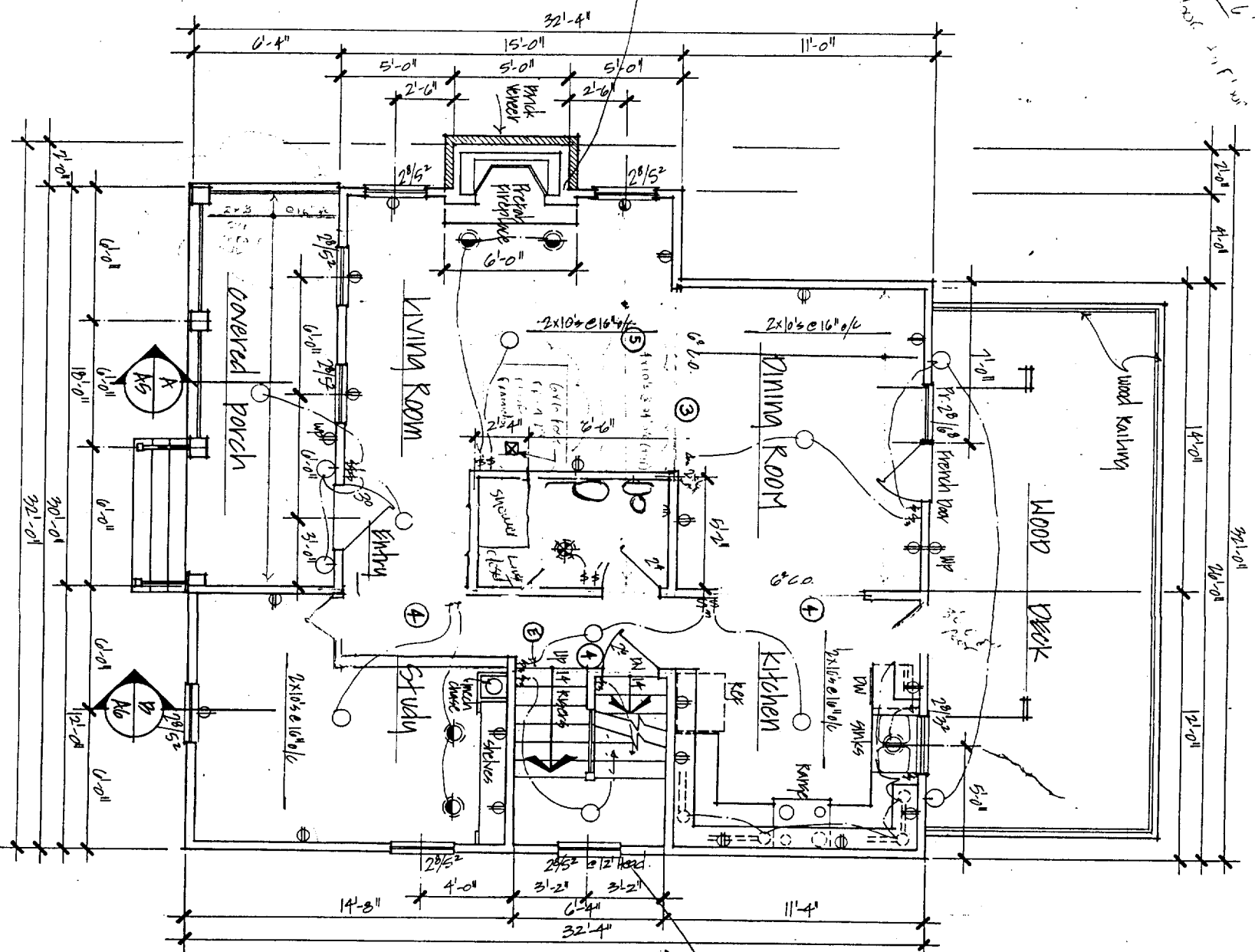
Schedule For Beams & Headers
 Unless Noted Otherwise on Plans.

SPAN: 2-2x6's
 3-1" to 2-2x8's
 4-1" to 2-2x10's
 5-1" to 2-2x12's w/1" x 11" cont. Ply'd. plate
 6-1" to 2-2x12's w/1" x 11" steel litch plate
 7-1" to 2-2x12's w/1" x 11" steel litch plate

FRAMING: 13

These spans and headers are based on design loads given for this plan and on the requirements of the Standard Building Code. Contractor is responsible for upgrades to these standards if required by any local government codes or standards.

- 16
- REMOVE ALL EXISTING GROUND FLOOR EXPOSURE 1, 4, 11, 14, 15, 16, 17, 18, 19, 20, 21, 22, 23, 24, 25, 26, 27, 28, 29, 30, 31, 32, 33, 34, 35, 36, 37, 38, 39, 40, 41, 42, 43, 44, 45, 46, 47, 48, 49, 50, 51, 52, 53, 54, 55, 56, 57, 58, 59, 60, 61, 62, 63, 64, 65, 66, 67, 68, 69, 70, 71, 72, 73, 74, 75, 76, 77, 78, 79, 80, 81, 82, 83, 84, 85, 86, 87, 88, 89, 90, 91, 92, 93, 94, 95, 96, 97, 98, 99, 100, 101, 102, 103, 104, 105, 106, 107, 108, 109, 110, 111, 112, 113, 114, 115, 116, 117, 118, 119, 120, 121, 122, 123, 124, 125, 126, 127, 128, 129, 130, 131, 132, 133, 134, 135, 136, 137, 138, 139, 140, 141, 142, 143, 144, 145, 146, 147, 148, 149, 150, 151, 152, 153, 154, 155, 156, 157, 158, 159, 160, 161, 162, 163, 164, 165, 166, 167, 168, 169, 170, 171, 172, 173, 174, 175, 176, 177, 178, 179, 180, 181, 182, 183, 184, 185, 186, 187, 188, 189, 190, 191, 192, 193, 194, 195, 196, 197, 198, 199, 200, 201, 202, 203, 204, 205, 206, 207, 208, 209, 210, 211, 212, 213, 214, 215, 216, 217, 218, 219, 220, 221, 222, 223, 224, 225, 226, 227, 228, 229, 230, 231, 232, 233, 234, 235, 236, 237, 238, 239, 240, 241, 242, 243, 244, 245, 246, 247, 248, 249, 250, 251, 252, 253, 254, 255, 256, 257, 258, 259, 260, 261, 262, 263, 264, 265, 266, 267, 268, 269, 270, 271, 272, 273, 274, 275, 276, 277, 278, 279, 280, 281, 282, 283, 284, 285, 286, 287, 288, 289, 290, 291, 292, 293, 294, 295, 296, 297, 298, 299, 300, 301, 302, 303, 304, 305, 306, 307, 308, 309, 310, 311, 312, 313, 314, 315, 316, 317, 318, 319, 320, 321, 322, 323, 324, 325, 326, 327, 328, 329, 330, 331, 332, 333, 334, 335, 336, 337, 338, 339, 340, 341, 342, 343, 344, 345, 346, 347, 348, 349, 350, 351, 352, 353, 354, 355, 356, 357, 358, 359, 360, 361, 362, 363, 364, 365, 366, 367, 368, 369, 370, 371, 372, 373, 374, 375, 376, 377, 378, 379, 380, 381, 382, 383, 384, 385, 386, 387, 388, 389, 390, 391, 392, 393, 394, 395, 396, 397, 398, 399, 400, 401, 402, 403, 404, 405, 406, 407, 408, 409, 410, 411, 412, 413, 414, 415, 416, 417, 418, 419, 420, 421, 422, 423, 424, 425, 426, 427, 428, 429, 430, 431, 432, 433, 434, 435, 436, 437, 438, 439, 440, 441, 442, 443, 444, 445, 446, 447, 448, 449, 450, 451, 452, 453, 454, 455, 456, 457, 458, 459, 460, 461, 462, 463, 464, 465, 466, 467, 468, 469, 470, 471, 472, 473, 474, 475, 476, 477, 478, 479, 480, 481, 482, 483, 484, 485, 486, 487, 488, 489, 490, 491, 492, 493, 494, 495, 496, 497, 498, 499, 500, 501, 502, 503, 504, 505, 506, 507, 508, 509, 510, 511, 512, 513, 514, 515, 516, 517, 518, 519, 520, 521, 522, 523, 524, 525, 526, 527, 528, 529, 530, 531, 532, 533, 534, 535, 536, 537, 538, 539, 540, 541, 542, 543, 544, 545, 546, 547, 548, 549, 550, 551, 552, 553, 554, 555, 556, 557, 558, 559, 560, 561, 562, 563, 564, 565, 566, 567, 568, 569, 570, 571, 572, 573, 574, 575, 576, 577, 578, 579, 580, 581, 582, 583, 584, 585, 586, 587, 588, 589, 590, 591, 592, 593, 594, 595, 596, 597, 598, 599, 600, 601, 602, 603, 604, 605, 606, 607, 608, 609, 610, 611, 612, 613, 614, 615, 616, 617, 618, 619, 620, 621, 622, 623, 624, 625, 626, 627, 628, 629, 630, 631, 632, 633, 634, 635, 636, 637, 638, 639, 640, 641, 642, 643, 644, 645, 646, 647, 648, 649, 650, 651, 652, 653, 654, 655, 656, 657, 658, 659, 660, 661, 662, 663, 664, 665, 666, 667, 668, 669, 670, 671, 672, 673, 674, 675, 676, 677, 678, 679, 680, 681, 682, 683, 684, 685, 686, 687, 688, 689, 690, 691, 692, 693, 694, 695, 696, 697, 698, 699, 700, 701, 702, 703, 704, 705, 706, 707, 708, 709, 710, 711, 712, 713, 714, 715, 716, 717, 718, 719, 720, 721, 722, 723, 724, 725, 726, 727, 728, 729, 730, 731, 732, 733, 734, 735, 736, 737, 738, 739, 740, 741, 742, 743, 744, 745, 746, 747, 748, 749, 750, 751, 752, 753, 754, 755, 756, 757, 758, 759, 760, 761, 762, 763, 764, 765, 766, 767, 768, 769, 770, 771, 772, 773, 774, 775, 776, 777, 778, 779, 780, 781, 782, 783, 784, 785, 786, 787, 788, 789, 790, 791, 792, 793, 794, 795, 796, 797, 798, 799, 800, 801, 802, 803, 804, 805, 806, 807, 808, 809, 810, 811, 812, 813, 814, 815, 816, 817, 818, 819, 820, 821, 822, 823, 824, 825, 826, 827, 828, 829, 830, 831, 832, 833, 834, 835, 836, 837, 838, 839, 840, 841, 842, 843, 844, 845, 846, 847, 848, 849, 850, 851, 852, 853, 854, 855, 856, 857, 858, 859, 860, 861, 862, 863, 864, 865, 866, 867, 868, 869, 870, 871, 872, 873, 874, 875, 876, 877, 878, 879, 880, 881, 882, 883, 884, 885, 886, 887, 888, 889, 890, 891, 892, 893, 894, 895, 896, 897, 898, 899, 900, 901, 902, 903, 904, 905, 906, 907, 908, 909, 910, 911, 912, 913, 914, 915, 916, 917, 918, 919, 920, 921, 922, 923, 924, 925, 926, 927, 928, 929, 930, 931, 932, 933, 934, 935, 936, 937, 938, 939, 940, 941, 942, 943, 944, 945, 946, 947, 948, 949, 950, 951, 952, 953, 954, 955, 956, 957, 958, 959, 960, 961, 962, 963, 964, 965, 966, 967, 968, 969, 970, 971, 972, 973, 974, 975, 976, 977, 978, 979, 980, 981, 982, 983, 984, 985, 986, 987, 988, 989, 990, 991, 992, 993, 994, 995, 996, 997, 998, 999, 1000.



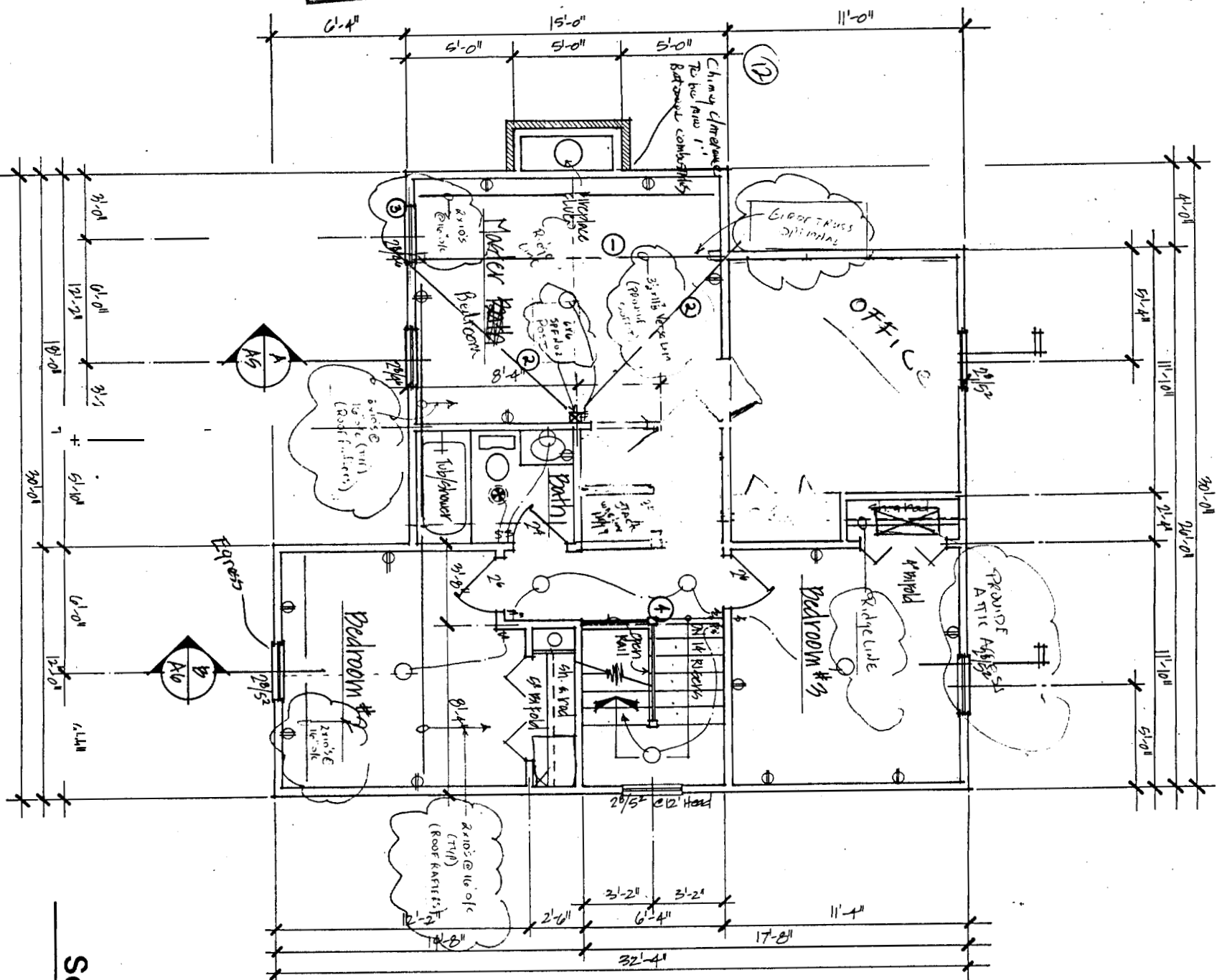
A2

STATE OF MAINE
 CHRISTOPHER F. RAY
 No. 10547
 REGISTERED PROFESSIONAL ENGINEER

SIGNATURE PLAN
 NO: 4049

THE NORRIS GROUP, INC.
 ARCHITECTS
 3340 Peachtree Road, NE
 Suite 1770
 Atlanta, Georgia 30326
 (404)-261-0313

CITY OF PORTLAND, MAINE
 APPROVED CONSTRUCTION PLANS
 APR 18 2005
 SUPERSEDES ALL
 PRIOR DATED PLANS



Second Floor Plan

Roof Framing Plan

- 1) 3/8" x 1 1/2" F. 3000 YF (Versulam) [Goret Truss 30"]
- 2) 3/8" x 1 1/2" F. 3000 DF (Alternite) (Versulam)
- 3) 3/8" x 1 1/2" Header SFF 3000 or After of (D) 3/8" x 1 1/2" F. 3000 SF (Type B) all exterior bearing walls w/ openings less than 6'-0"
- 4) 2" x 4" Header SFF 3000 or After or (1) 1 1/2" x 1 1/2" F. 3000 SP VL (Versulam)
- 5) Truss @ 30" OC SFF Series Structural
- 6) BCL4503 Series Joist: 9 1/2" BCL450 @ 16" OC

Roof Framing Notes

15 psf
 54 psf Roof load

- A) Provide Min 1/2" APA Rated Plywood w/ span Rating 32/16 minimum.
- B) Connection of structural members shall be according to manufacturers provided instructions.
- C) ATIC Access shall be a minimum 22" x 30" and at least 30" of headroom

Load Bearing wall in terrace

Schedule For Beams & Headers
 Unless Noted Otherwise on Plans.

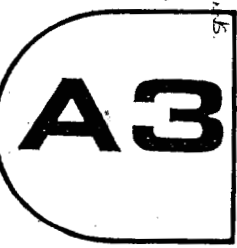
SPAN:	FRAMING:
Up to 4'-0"	2-2x6's
4'-1" to 6'-0"	2-2x8's
6'-1" to 8'-0"	2-2x10's
8'-1" to 10'-0"	2-2x12's
10'-1" to 11'-0"	2-2x12's w/ 1"x11" cont. Plyw'd. Plate
11'-1" to 14'-0"	2-2x12's w/ 1"x11" steel filitch plate

These spans and headers are based on design loads given for this plan and on the requirements of the Standard Building Code. Contractor is responsible for upgrades to these standards if required by any local government codes or standards.

ELECTRICAL SYMBOLS

LIGHT FIXTURES	CONVENIENCE OUTLETS
○ SURFACE MOUNTED @ C/C.	⊕ 115 VOLT DUPLEX
○ WALL MOUNTED	⊕ 115 VOLT DUPLEX SPLIT W/RED
○ RECESSED CEILING LIGHT	⊕ 230 VOLT OUTLET
○ RECESSED EYEBALL SPOT	⊕ 115 VOLT GROUNDED
○ RECESSED PINHOLE SPOT	⊕ 115 VOLT DUPLEX WEATHER PROOF SPECIAL PURPOSE
○ RECESSED WALL W/ASHER	⊕ 4M PHONE JACK
○ EXHAUST FAN W/LIGHT MOUNTED @ CEILING	⊕ TV TELEVISION JACK
○ LIGHT W/PULL CHAIN	
○ CEILING PADDLE FAN WITH OR W/O LIGHT KIT	SWITCHES
○ EXTERIOR FLOOD LIGHTS	⊕ SINGLE POLE
○ FLUORESCENT STRIPS	⊕ THREE WAY
○ MOUNTED SMOKE DETECTOR	⊕ PUSH BUTTON
○ MOUNTED SMOKE DETECTOR	⊕ DIMMER/RHEOSTAT

17) Hire and install smoke detectors with battery back up on separate circuit to be installed in each bedroom and in common areas on each floor.

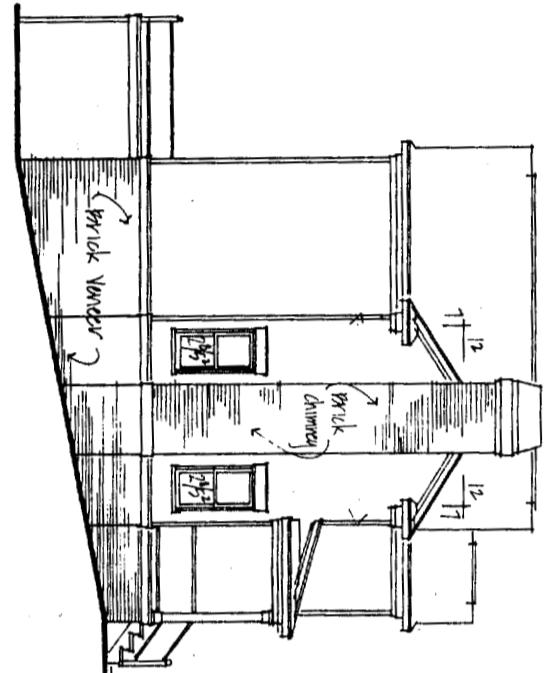


SIGNATURE PLAN
 NO: 4049

THE NORRIS GROUP, INC.
 ARCHITECTS
 3340 Peachtree Road, NE
 Suite 1770
 Atlanta, Georgia 30326
 (404) 261-0313

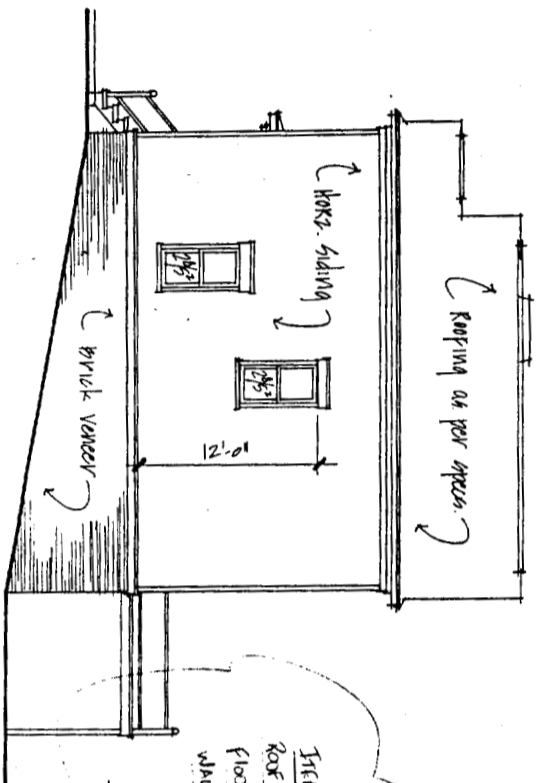
CITY OF PORTLAND, MAINE
 APPROVED CONSTRUCTION PLANS
 APR 13 2005
 SUPERSEDES ALL
 PREVIOUS DATED PLANS

Left Side Elevation



Right Side Elevation

Scale: 1/8" = 1'-0"



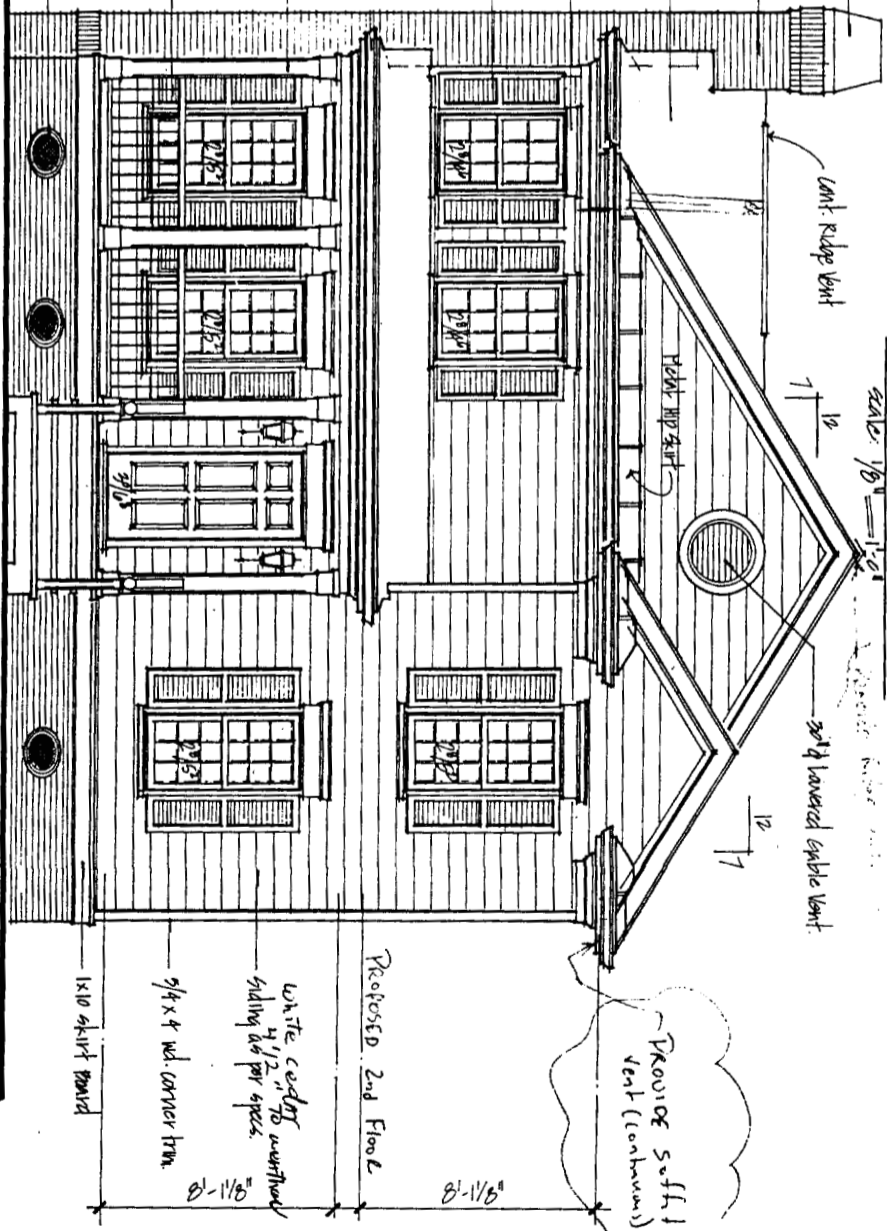
30 year
 15 pin T sample

30 year 15 pin T sample — Keeping as per specs

Labels: Metal chimney cap, Brick Veneer chimney, wood cabinet head, louvered shutters, Alum. gutters, 8" x vinyl wood column, Wood railing, Recreative cast iron foundation vents

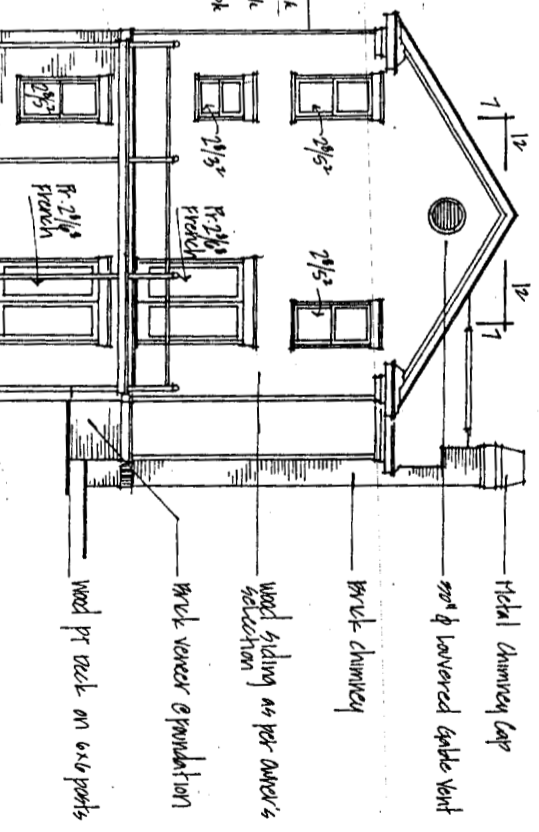
Front Elevation

Scale: 1/4" = 1'-0"



Rear Elevation

Scale: 1/8" = 1'-0"



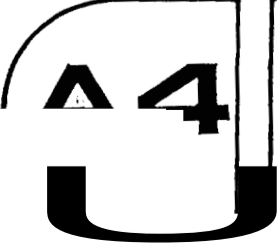
APA RATED SIFATHINK

ITEM	Quantity	Unit	Material
Roof	5132	sq ft	Asph/F Shingles
Floors	2512	sq ft	1/2" Ply
Walls	5132	sq ft	Brick Veneer

APA RATED SIFATHINK

ITEM	Quantity	Unit	Material
Roof	5216	sq ft	Asph/F Shingles
Floors	4912	sq ft	1/2" Ply
Walls	2410	sq ft	Brick Veneer

Features are covered plans

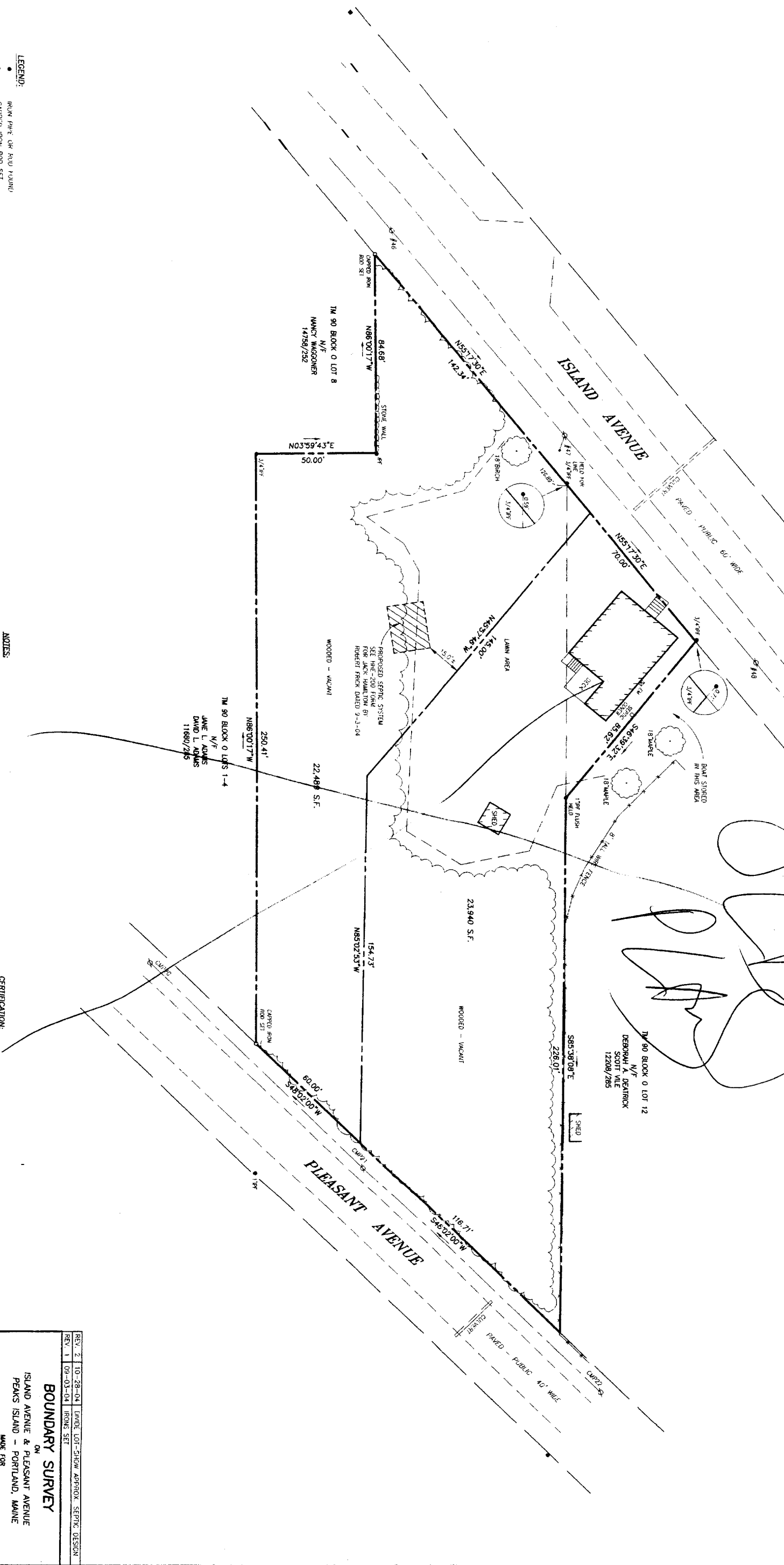
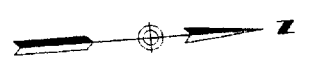
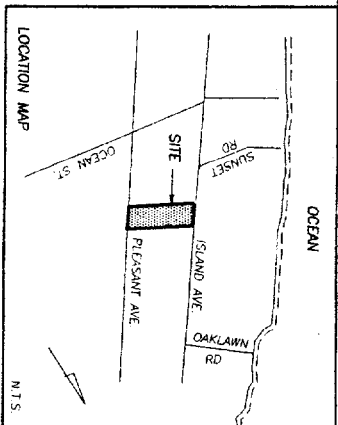


STATE OF MAINE
 CHRISTOPHER F. RAY
 No. 10547
 REGISTERED PROFESSIONAL ENGINEER
 3392

SIGNATURE PLAN
 NO: 4049

THE NORRIS GROUP, INC.
 ARCHITECTS
 3340 Peachtree Road, NE
 Suite 1770
 Atlanta, Georgia 30326
 (404) 261-0313

DEPT. OF BUILDING INSPECTION
CITY OF PORTLAND, ME
NOV 2 2004
D E B E I V E



LEGEND:
 ● IRON PIPE OR IRON PILING
 ○ CAPED IRON ROD SET
 ○ UTILITY POLE
 ○ STONE WALL
 ○ OVERHEAD WIRES

GRAPHIC SCALE
 0 10' 20' 40' 80'

PLAN REFERENCES:

1. PLAN OF PLEASANT AVENUE PEAKS ISLAND JANUARY 1893 AS FILED IN THE CITY OF PORTLAND'S ENGINEERING DEPARTMENT
2. PLAN OF PROPERTY IN PORTLAND, MAINE (PEAKS ISLAND) MADE FOR GUSTAVE A. WICKSCHER IN DATED MAR. 19, 1977 BY H. AND E. JORDAN
3. BOUNDARY SURVEY AT 327 ISLAND AVENUE, PEAKS ISLAND, PORTLAND, MAINE MADE FOR MICHAEL INTERS DATED MAY 3, 2004 BY OWEN HASKELL, INC.

NOTES:

1. OWNER OF RECORD: M. ELIZABETH HAMILTON HENRS 149 FRANKS STREET PORTLAND, MAINE 04102 BOOK 304 PAGE 407
2. PARCEL IS SHOWN AS LOTS 10 AND 11, BLOCK 0, ON THE CITY OF PORTLAND'S ASSESSORS MAP 90
3. BEARINGS ARE BASED ON MONUMENTS FOUND AND PLAN REFERENCE 1

CERTIFICATION:

OWEN HASKELL, INC. HEREBY CERTIFIES THAT THIS PLAN IS BASED ON, AND THE RESULT OF, AN ON THE GROUND FIELD SURVEY AND THAT TO THE BEST OF OUR KNOWLEDGE, INFORMATION AND BELIEF, IT CONFORMS TO THE BOARD OF LICENSEE FOR PROFESSIONAL LAND SURVEYORS CURRENT STANDARDS OF PRACTICE.

DATE: 10-28-04
 WILLIAM C. SHIPPEN, PLS #2118



BOUNDARY SURVEY

ON
 ISLAND AVENUE & PLEASANT AVENUE
 PEAKS ISLAND - PORTLAND, MAINE
 MADE FOR
 JACK HAMILTON
 OWEN HASKELL, INC.
 16 CARO ST., PORTLAND, ME 04101 (207) 774-0424

Drawn By	WCS	Date	Job No.
Trace By	JLW	AUGUST 3, 2004	2004-158P
Check By	WCS	Scale	Orig. No.
Book No.	989	1" = 20'	1

REV. 2 | 10-28-04 | UNDER LOT-SHOW APPROX. SETBACK DESIGN
 REV. 1 | 09-03-04 | IRONS SET

Disregard

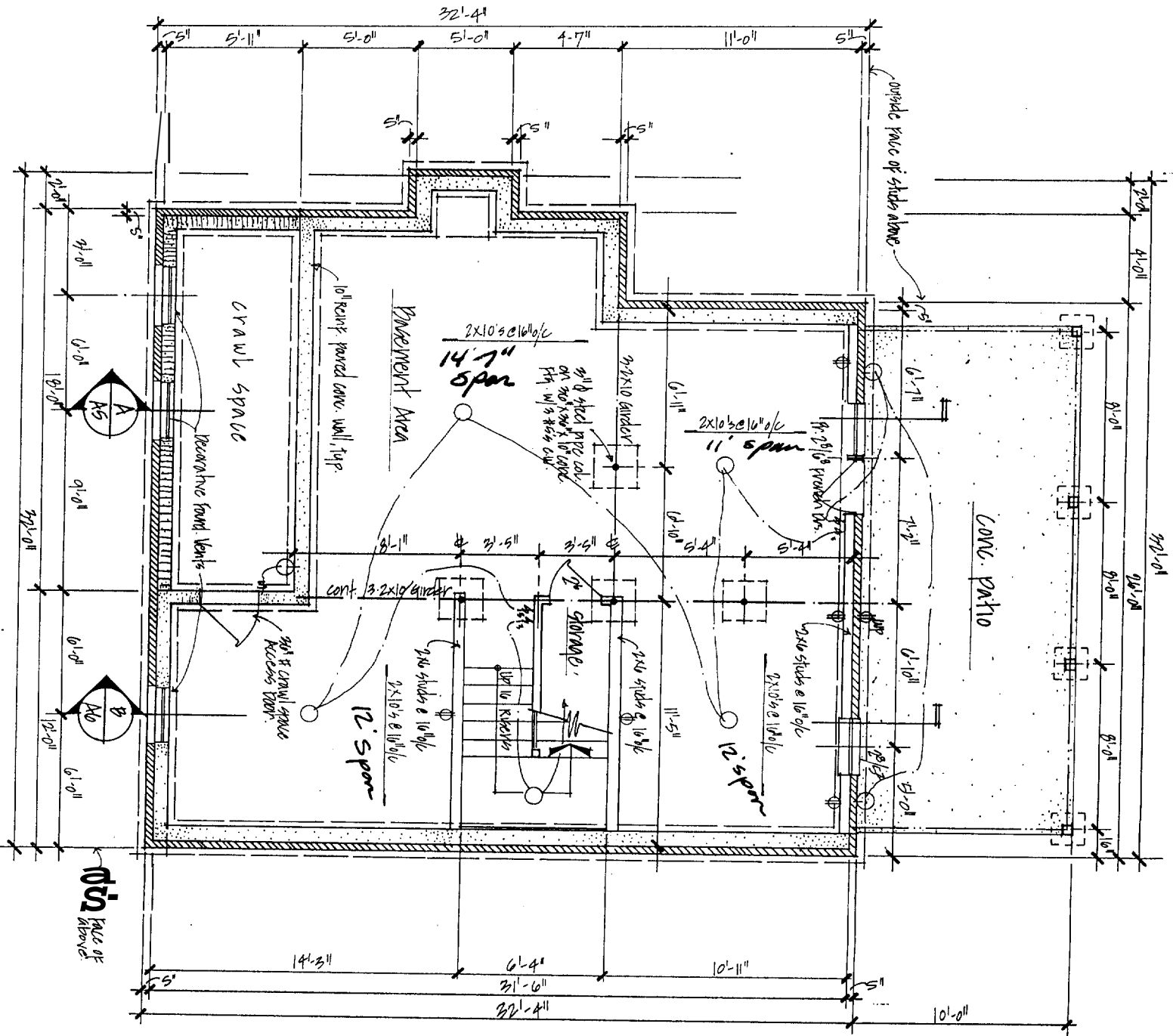
ELECTRICAL SYMBOLS			
○	SURFACE MOUNTED @ C/C.	⊕	115 VOLT DUPLEX
○	WALL MOUNTED	⊕	115 VOLT DUPLEX SPLIT WIRED
○	RECESSED CEILING LIGHT	⊕	230 VOLT OUTLET
○	RECESSED EYEBALL SPOT	⊕	115 VOLT GROUNDING
○	RECESSED PINHOLE SPOT	⊕	115 VOLT DUPLEX WEATHER PROOF SPECIAL PURPOSE
○	RECESSED WALL WASHER	⊕	PHONE JACK
○	EXHAUST FAN W/LIGHT MOUNTED @ CEILING	⊕	TV TELEVISION JACK
○	LIGHT W/PULL CHAIN		
○	CEILING PADDLER FAN WITH OR W/O LIGHT KIT	SWITCHES	
○	EXTERIOR FLOOD LIGHTS	⊕	SINGLE POLE
○	FLUORESCENT STRIPS	⊕	THREE WAY
○	WALL MOUNTED SMOKE DETECTOR	⊕	PUSH BUTTON
		⊕	DIMMER/REHOSSTAT

Schedule For Beams & Headers
Unless Noted Otherwise on Plans.

SPAN:	FRAMING:
Up to 4'-0"	2-2x8's
4'-1" to 8'-0"	2-2x8's
8'-1" to 10'-0"	2-2x10's
10'-1" to 11'-0"	2-2x12's
11'-1" to 14'-0"	2-2x12's w/1"x11" cont. Plyw'd. plate

These spans and headers are based on design loads given for this plan and on the requirements of the Stearns Building Code. Contractor is responsible for upgrades to these standards if required by any local government codes or standards.

DEPT. OF BUILDING INSPECTION
CITY OF PORTLAND, ME
NOV 2 2 2004



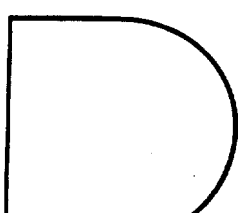
Basement Plan

A1

3392

SIGNATURE PLAN
NO: 4049

THE NORRIS GROUP, INC.
ARCHITECTS
3340 Peachtree Road, NE
Suite 1770
Atlanta, Georgia 30326
(404) 261-0313



ci

Not Approved

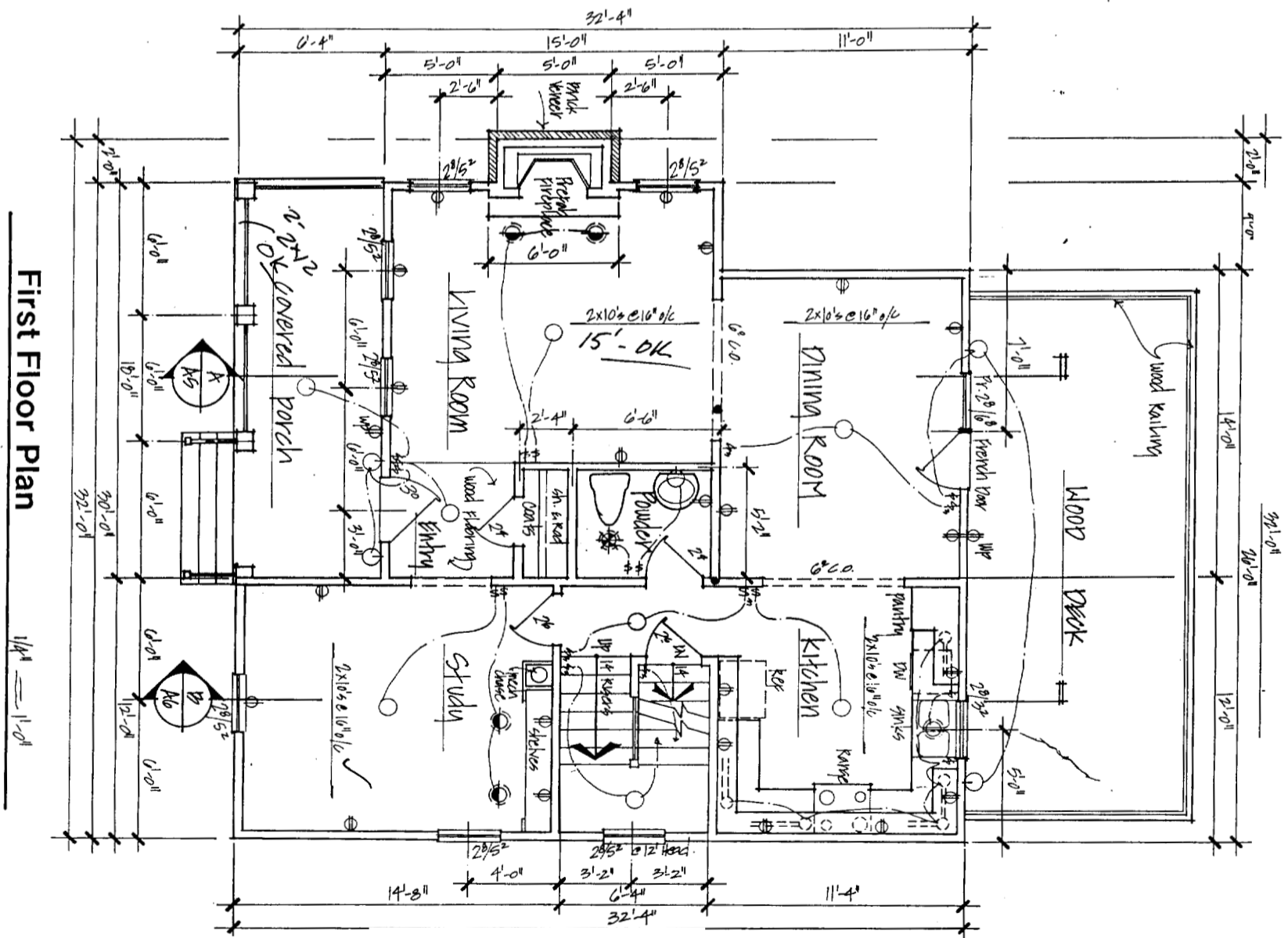
ELECTRICAL SYMBOLS	
	115 VOLT DUPLEX
	115 VOLT DUPLEX SPLIT WIRED
	230 VOLT OUTLET
	115 VOLT GROUNDED
	115 VOLT DUPLEX WEATHER PROOF
	SPECIAL PURPOSE
	PHONE JACK
	TELEVISION JACK
	SWITCHES
	SINGLE POLE
	THREE WAY
	PUSH BUTTON
	DIMMER/RHOSSTAT

Schedule For Beams & Headers
 Unless Noted Otherwise on Plans

SPAN: FRAMING:

Up to 4'-0" 2-2x6's
 4'-1" to 6'-0" 2-2x8's
 6'-1" to 8'-0" 2-2x10's
 8'-1" to 10'-0" 2-2x12's
 10'-1" to 11'-0" 2-2x12's w/1"x11" cont. ply'd. plate
 11'-1" to 14'-0" 2-2x12's w/1"x11" steel fitch plate

These spans and headers are based on design loads given for this plan and on the requirements of the Standard Building Code. Contractor is responsible for upgrades to these standards if required by any local government codes or standards.



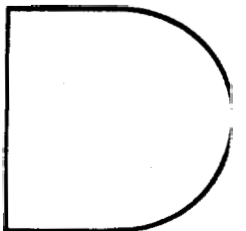
First Floor Plan

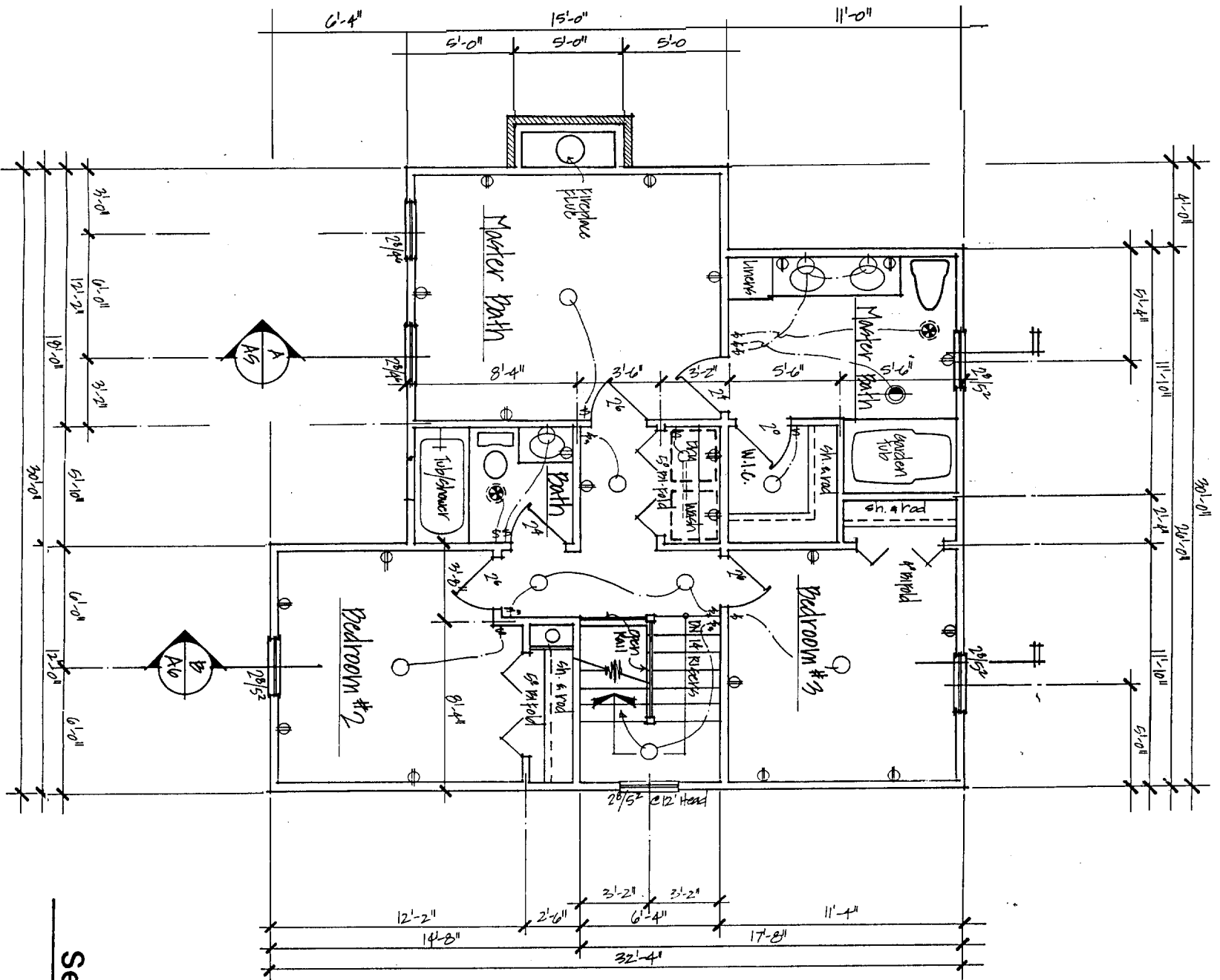
A2

3392

SIGNATURE PLAN
 NO: 4049

THE NORRIS GROUP, INC.
 ARCHITECTS
 3340 Peachtree Road, NE
 Suite 1770
 Atlanta, Georgia 30326
 (404)-261-0313





Second Floor Plan 1/4" = 1'-0"

ELECTRICAL SYMBOLS	
○	SURFACE MOUNTED @ CLC.
○	WALL MOUNTED
○	RECESSED CEILING LIGHT
○	RECESSED EYEBALL SPOT
○	RECESSED PINHOLE SPOT
○	RECESSED WALL WASHER
○	EXHAUST FAN W/LIGHT MOUNTED @ CEILING
○	LIGHT W/PULL CHAIN
○	CEILING PADBLE FAN WITH OR W/O LIGHT KIT
○	EXTERIOR FLOOD LIGHTS
○	FLUORESCENT STRIPS
○	WALL MOUNTED SMOKE DETECTOR
⊕	115 VOLT DUPLEX
⊕	115 VOLT DUPLEX SPLIT WIRER
⊕	230 VOLT OUTLET
⊕	115 VOLT GROUNDED
⊕	115 VOLT DUPLEX WEATHER PROOF SPECIAL PURPOSE
⊕	PHONE JACK
⊕	TV TELEVISION JACK
⊕	SWITCHES
⊕	SINGLE POLE
⊕	THREE WAY
⊕	PUSH BUTTON
⊕	DINNER/RHEOSTAT

Schedule For Beams & Headers

Unless Noted Otherwise on Plans.

SPAN:	BEAMING:
0'-0" to 4'-0"	2-2x6's
4'-1" to 6'-8"	2-2x8's
6'-9" to 8'-0"	2-2x10's
8'-1" to 10'-0"	2-2x12's
10'-1" to 11'-0"	2-2x12's w/1"x11" cont. Plyw'd. plate
11'-1" to 14'-0"	2-2x12's w/1"x11" steel fitch plate

These spans and headers are based on design loads given for this plan and on the requirements of the Standard Building Code. Contractor is responsible for upgrades to these standards if required by any local government codes or standards.

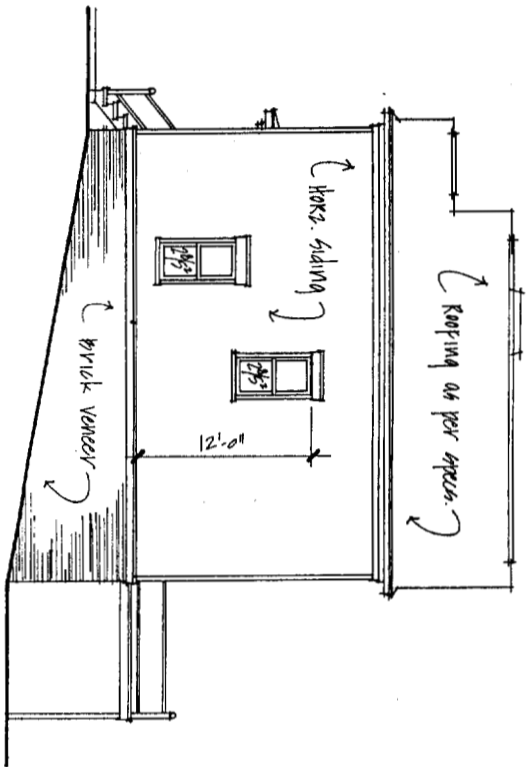
Not approved

A3

3392

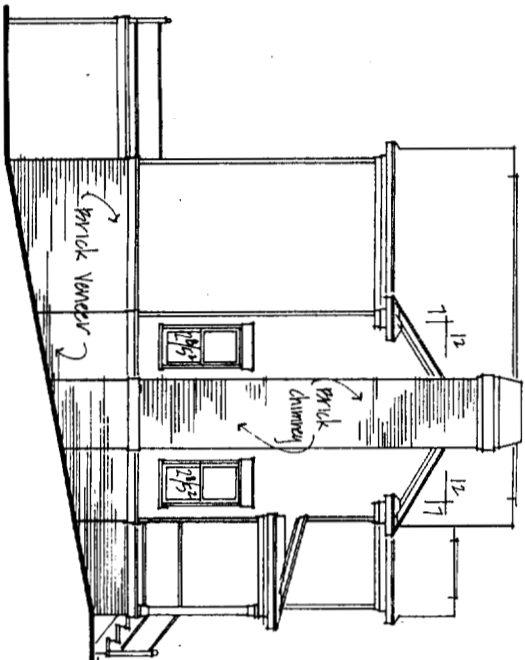
SIGNATURE PLAN
NO: 4049

THE NORRIS GROUP, INC.
ARCHITECTS
3340 Peachtree Road, NE
Suite 1770
Atlanta, Georgia 30326
(404) 261-0313



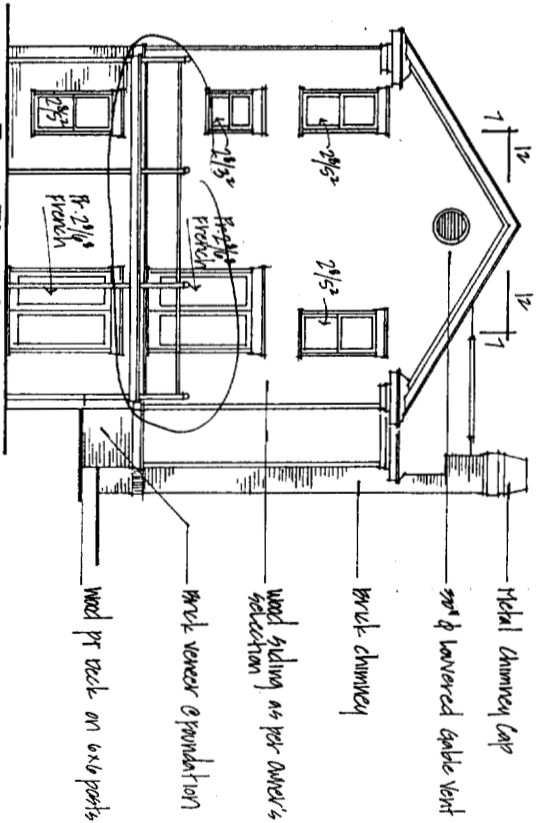
Right Side Elevation

scale: 1/8" = 1'-0"



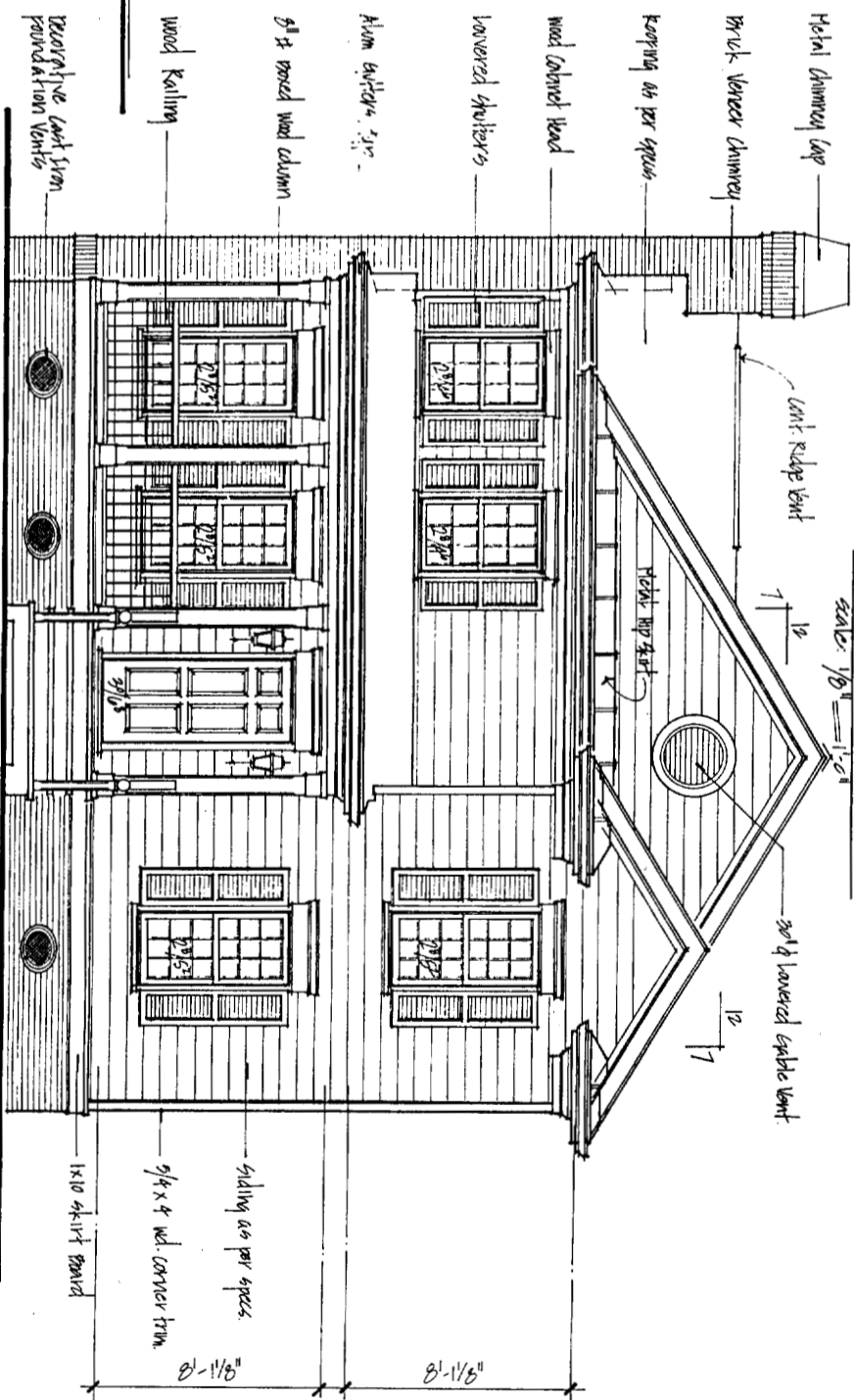
Left Side Elevation

scale: 1/8" = 1'-0"



Rear Elevation

scale: 1/8" = 1'-0"



Front Elevation

scale: 1/8" = 1'-0"

A4

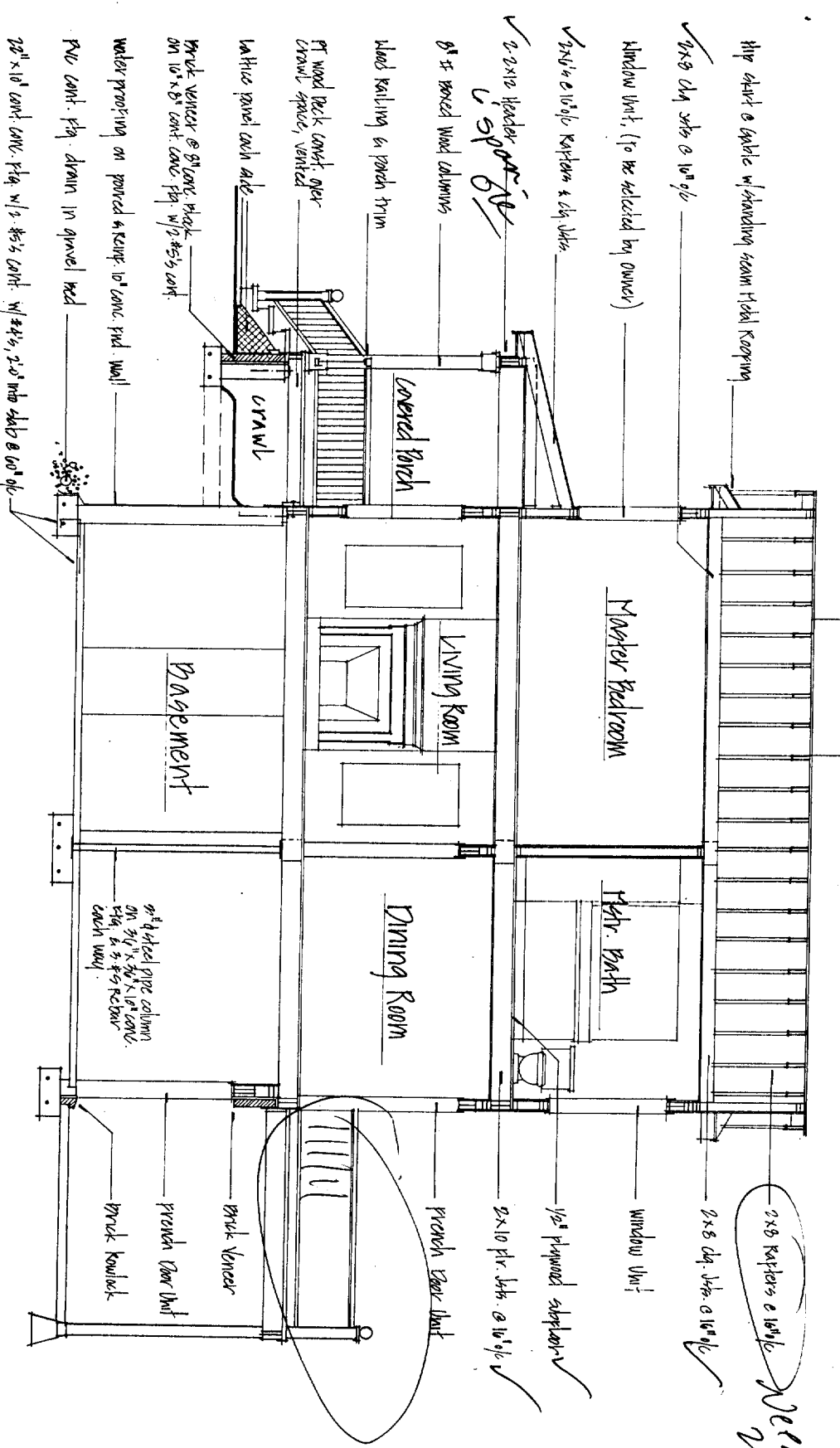
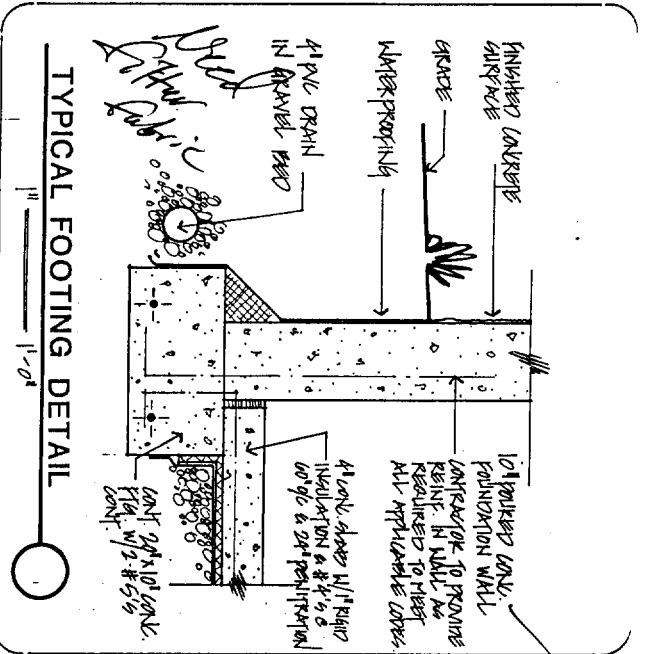
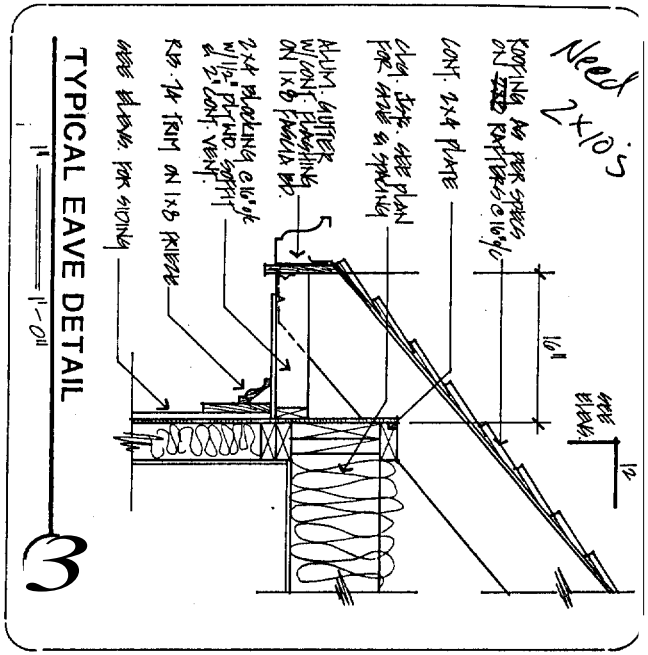
2292

SIGNATURE PLAN

NO: 4049

THE NORRIS GROUP, INC.

ARCHITECTS
3340 Peachtree Road, NE
Suite 1770
Atlanta, Georgia 30326
(404) 261-0313



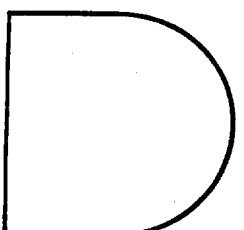
A
Building Section
 scale: 1/4" = 1'-0"

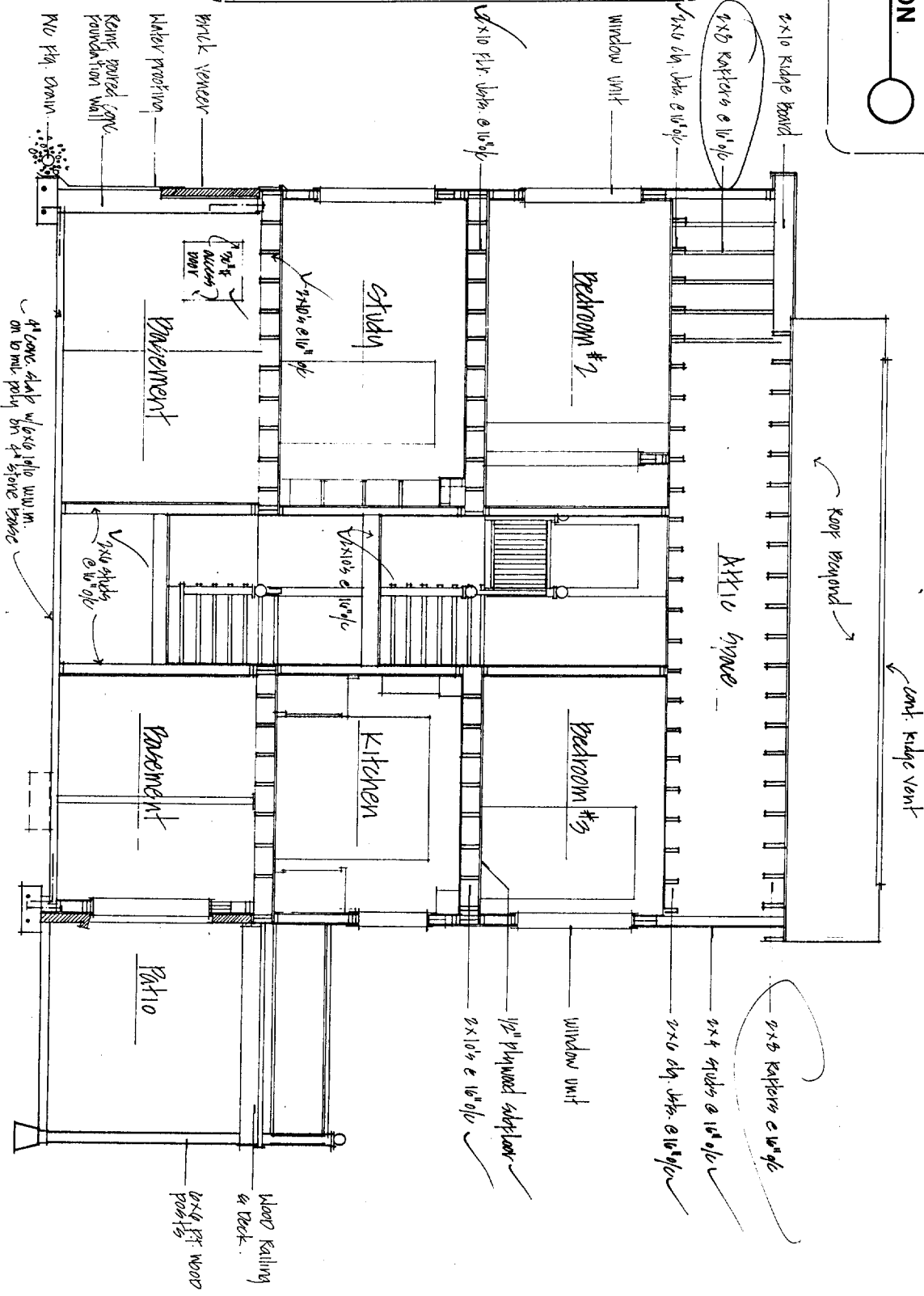
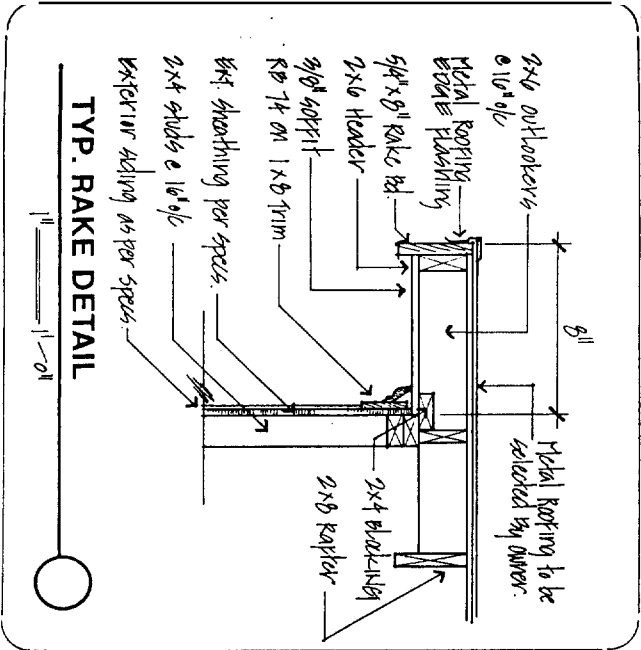
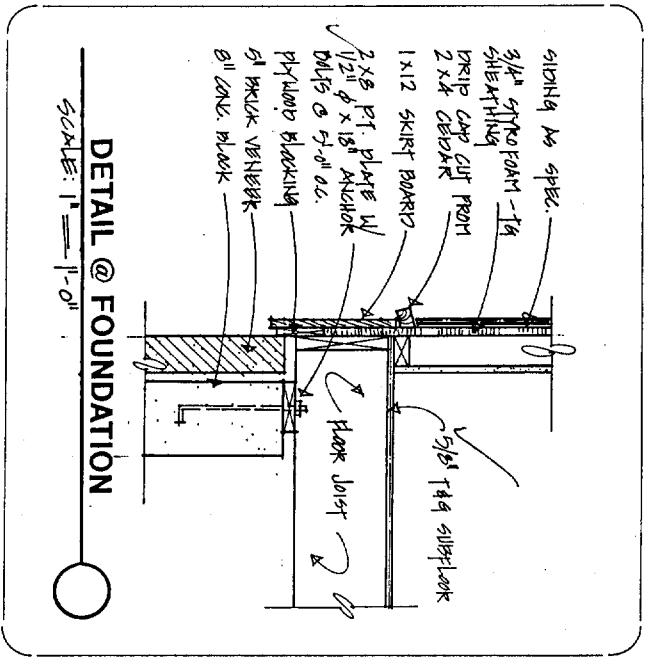
A5

3392

SIGNATURE PLAN
NO: 4049

THE NORRIS GROUP, INC.
 ARCHITECTS
 3340 Peachtree Road, NE
 Suite 1770
 Atlanta, Georgia 30326
 (404) 261-0313





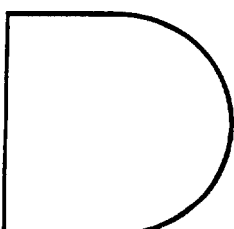
B Building Section
 SCALE: 1/4" = 1'-0"

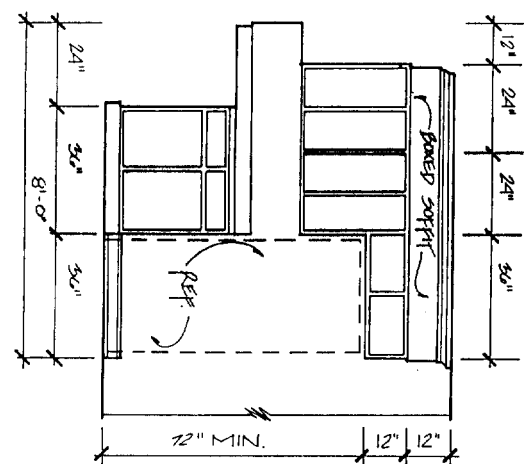
A6

3392

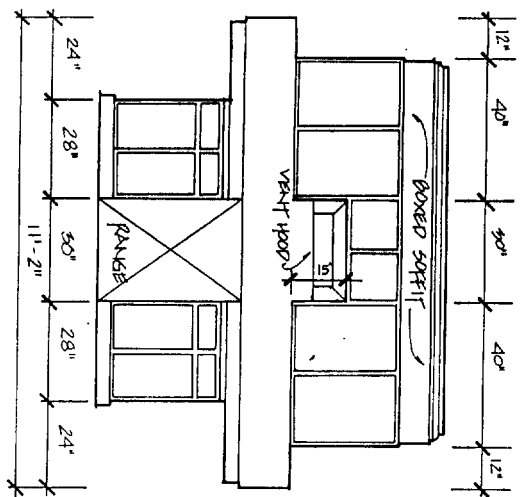
SIGNATURE PLAN
 NO: 4049

THE NORRIS GROUP, INC.
 ARCHITECTS
 3340 Peachtree Road, NE
 Suite 1770
 Atlanta, Georgia 30326
 (404) 261-0313

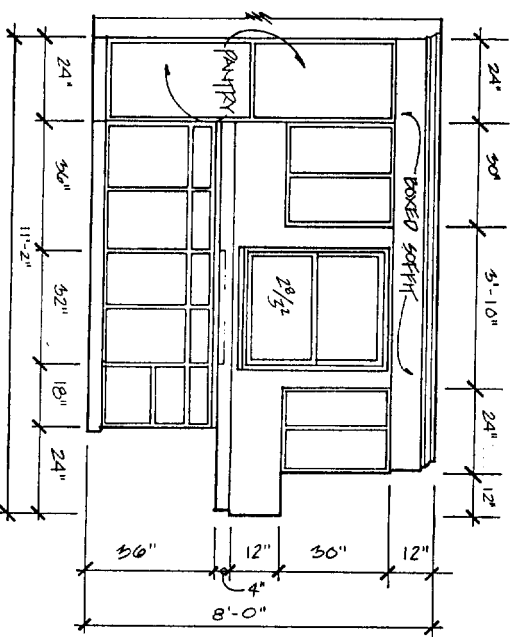




A KITCHEN

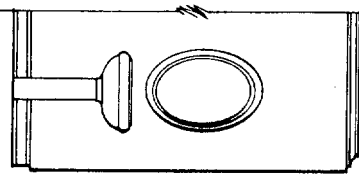


B KITCHEN

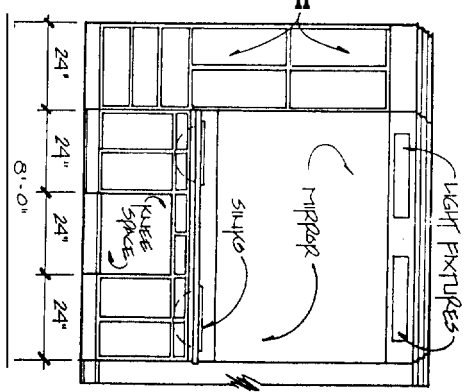


C KITCHEN

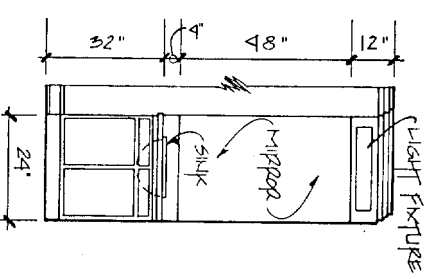
D POWDER ROOM



E MASTER BATH



F BATH



CABINET NOTE
 THESE CABINET ELEVATIONS ARE A GENERAL REPRESENTATION ONLY. CABINET SUPPLIER TO PROVIDE SHOP DRAWINGS FOR OWNER'S REVIEW AND APPROVAL BEFORE CONSTRUCTION.

CABINET ELEVATIONS

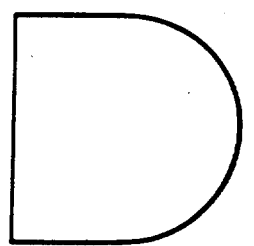
3/8" = 1'-0"

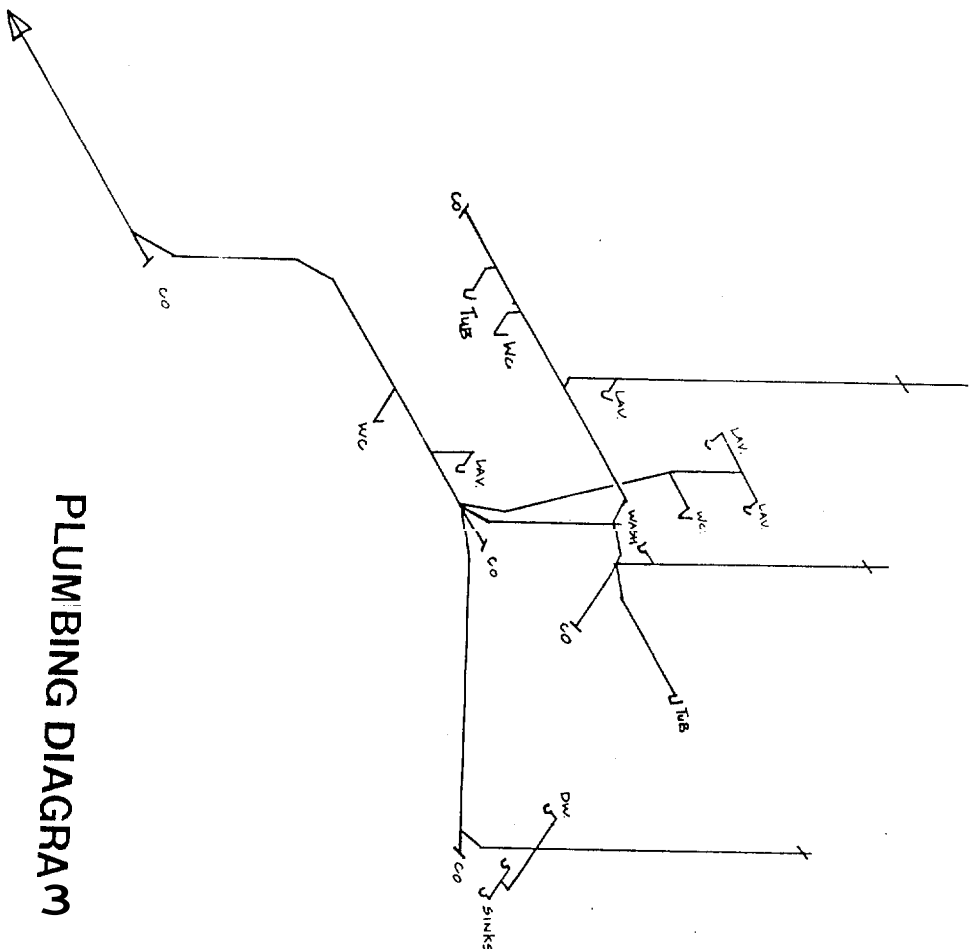
A7

339

SIGNATURE PLAN
NO: 4049

THE NORRIS GROUP, INC.
 ARCHITECTS
 3340 Peachtree Road. NE
 Suite 1770
 Atlanta, Georgia 30326
 (404) 261-0313





PLUMBING DIAGRAM

This drawing is a general representation for estimating purposes only. The general contractor shall confirm or verify all information with plumbing subcontractor prior to construction. The Norris Group is not responsible for nor guarantees the accuracy of this drawing.