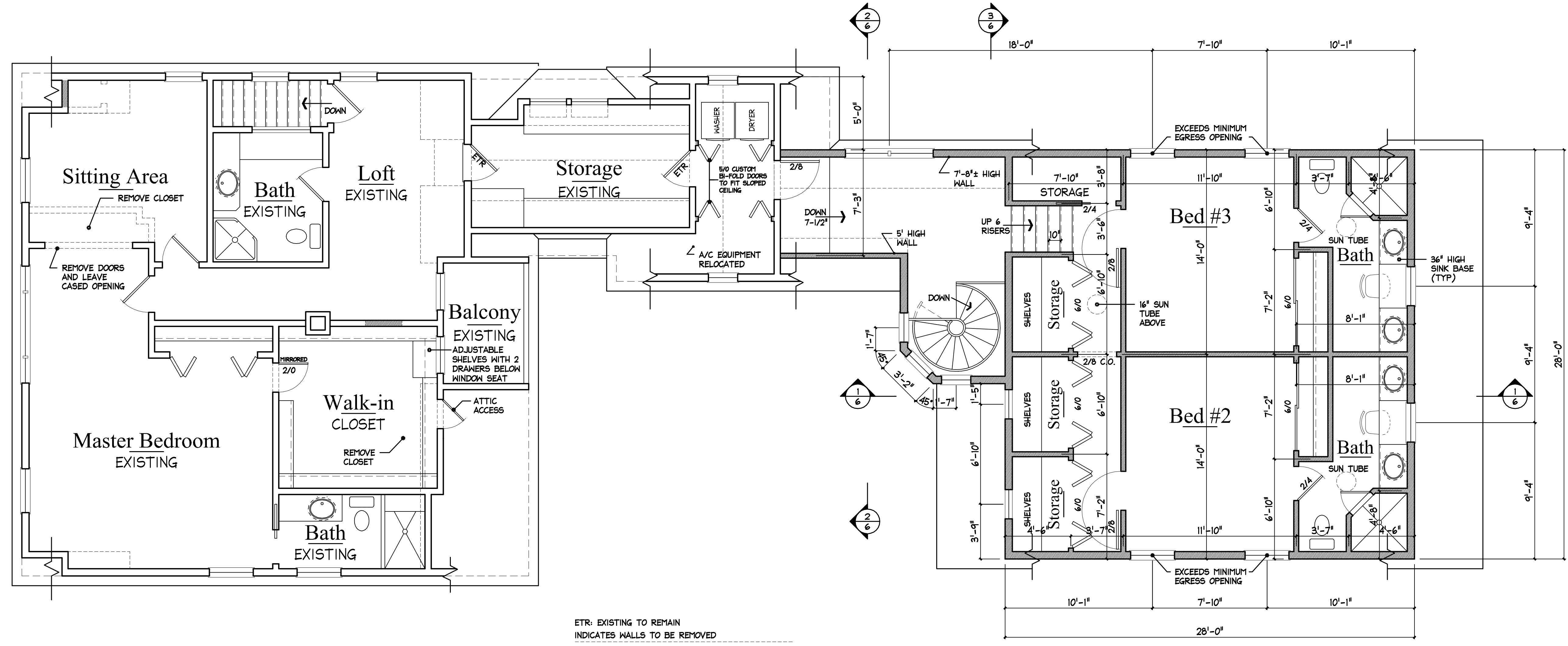


x:\Users\beachside-peaks\pds\mz\2015\2015_03_10_15_00am\2015_03_10_15_00am.dwg Tuesday, June 16, 2015 11:31:03am



ETR: EXISTING TO REMAIN
 INDICATES WALLS TO BE REMOVED
 INDICATES NEW 2X6 EXTERIOR & 2X4 INTERIOR WALLS

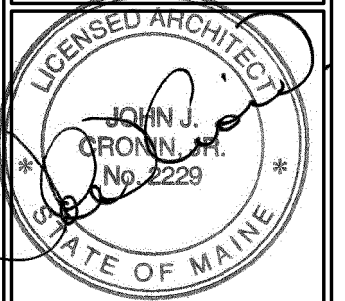
SECOND FLOOR PLAN

1/4" = 1'-0"

© COPYRIGHT 2015 - M. Z. O. ARCHITECTURAL GROUP, INC. OWNS THE COPYRIGHT IN THIS DOCUMENT. NO REPRODUCTION OR OTHER USE IS ALLOWED WITHOUT THE EXPRESS WRITTEN CONSENT OF M. Z. O. ARCHITECTURAL GROUP, INC.

The MZO GROUP
 DESIGNERS • ARCHITECTS • PLANNERS
 IN THE *Mouelle* TRADITION

93 Montvale Avenue, Suite 4150 • Stonham, Massachusetts 02180
 Voice: 781.279.4444 • Fax: 781.279.4448 • E-Mail: mzo@mzogroup.com • www.mzogroup.com



"Beachside"
 60 Oaklawn Road-Peaks Island, Maine

Second Floor Plan
 SCALE: 1/4"=1'-0"

Date / Drawn by
 06/03/15
 Date/Revised by

JOB NO. **5810**