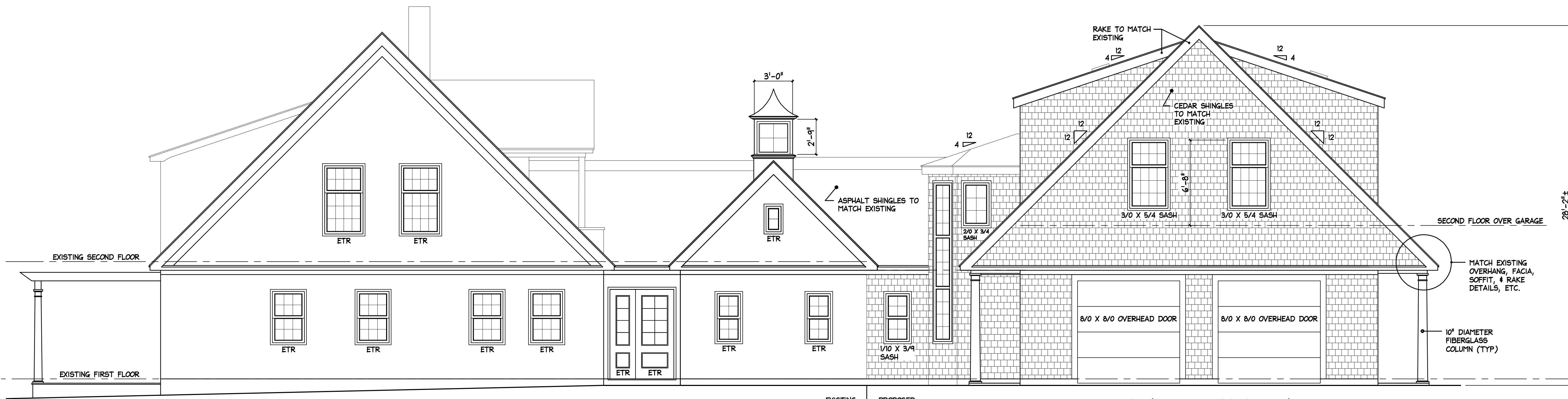
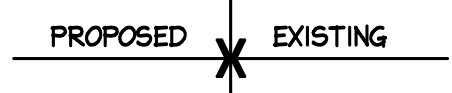


NORTH ELEVATION

1/4" = 1'-0" ETR: EXISTING TO REMAIN



SOUTH ELEVATION

1/4" = 1'-0" ETR: EXISTING TO REMAIN



© COPYRIGHT 2015 - M. Z. O. ARCHITECTURAL GROUP, INC. OWNS THE COPYRIGHT IN THIS DOCUMENT. NO REPRODUCTION OR OTHER USE IS ALLOWED WITHOUT THE EXPRESS WRITTEN CONSENT OF M. Z. O. ARCHITECTURAL GROUP, INC.

The MZO GROUP
DESIGNERS • ARCHITECTS • PLANNERS
IN THE *MOORE* TRADITION

93 Mainville Avenue, Suite 450 • Scarborough, Massachusetts 02189
Voice: 781-279-4444 • Fax: 781-279-4448 • E-Mail: mzo@mzogroup.com • www.mzogroup.com

LICENSED ARCHITECT
JOHN J. O'CONNOR
No. 2229
STATE OF MAINE

"Beachside"
60 Oaklawn Road-Peaks Island, Maine

Elevations
SCALE: 1/4"=1'-0"

Date / Drawn by
06/03/15
Date/Revised by

JOB NO. 5810

5

x:\Users\jbeachside-peaks\p0001\5810\15_06_03.dwg Tuesday, June 16, 2015 11:53:35am