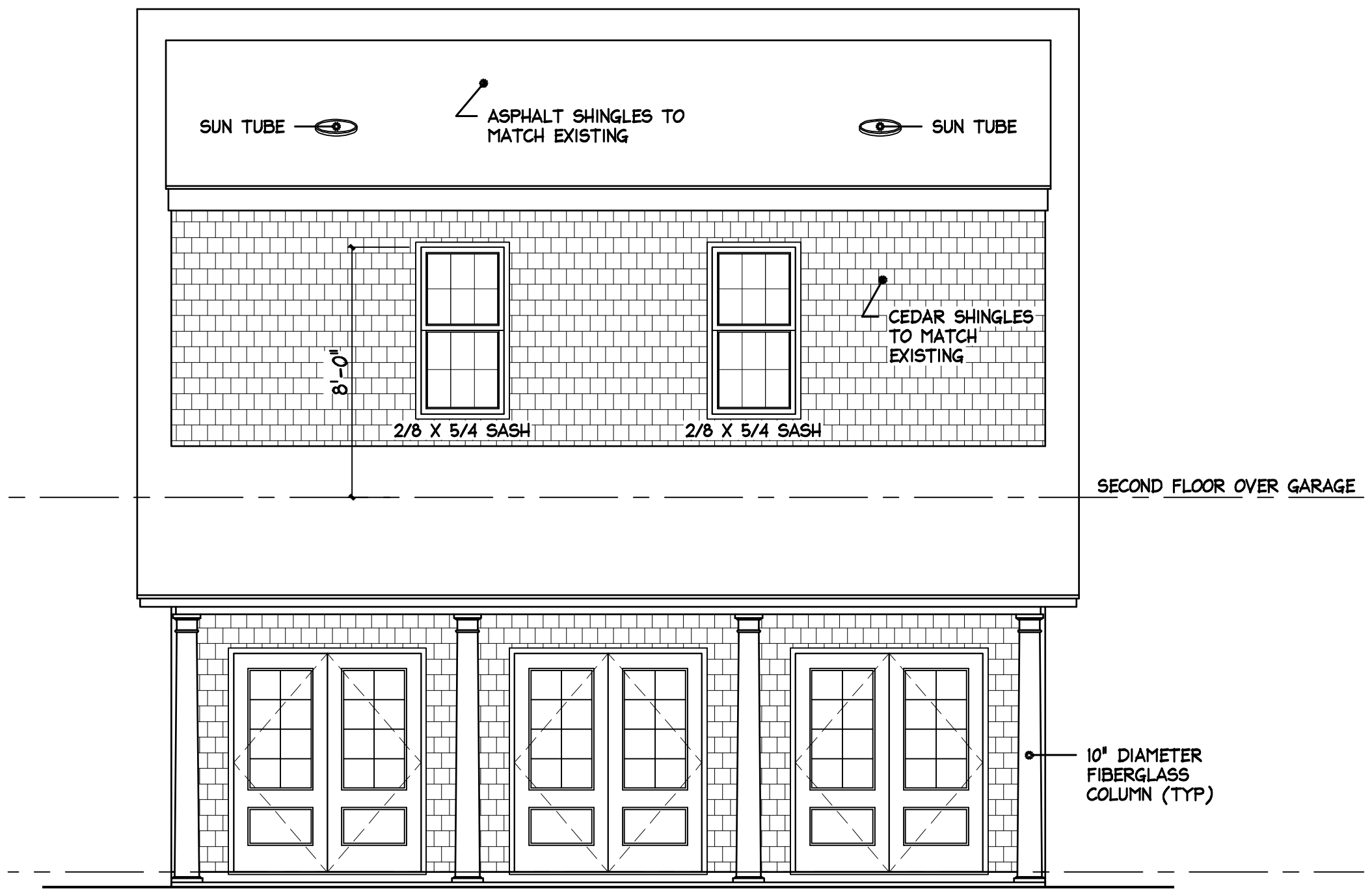


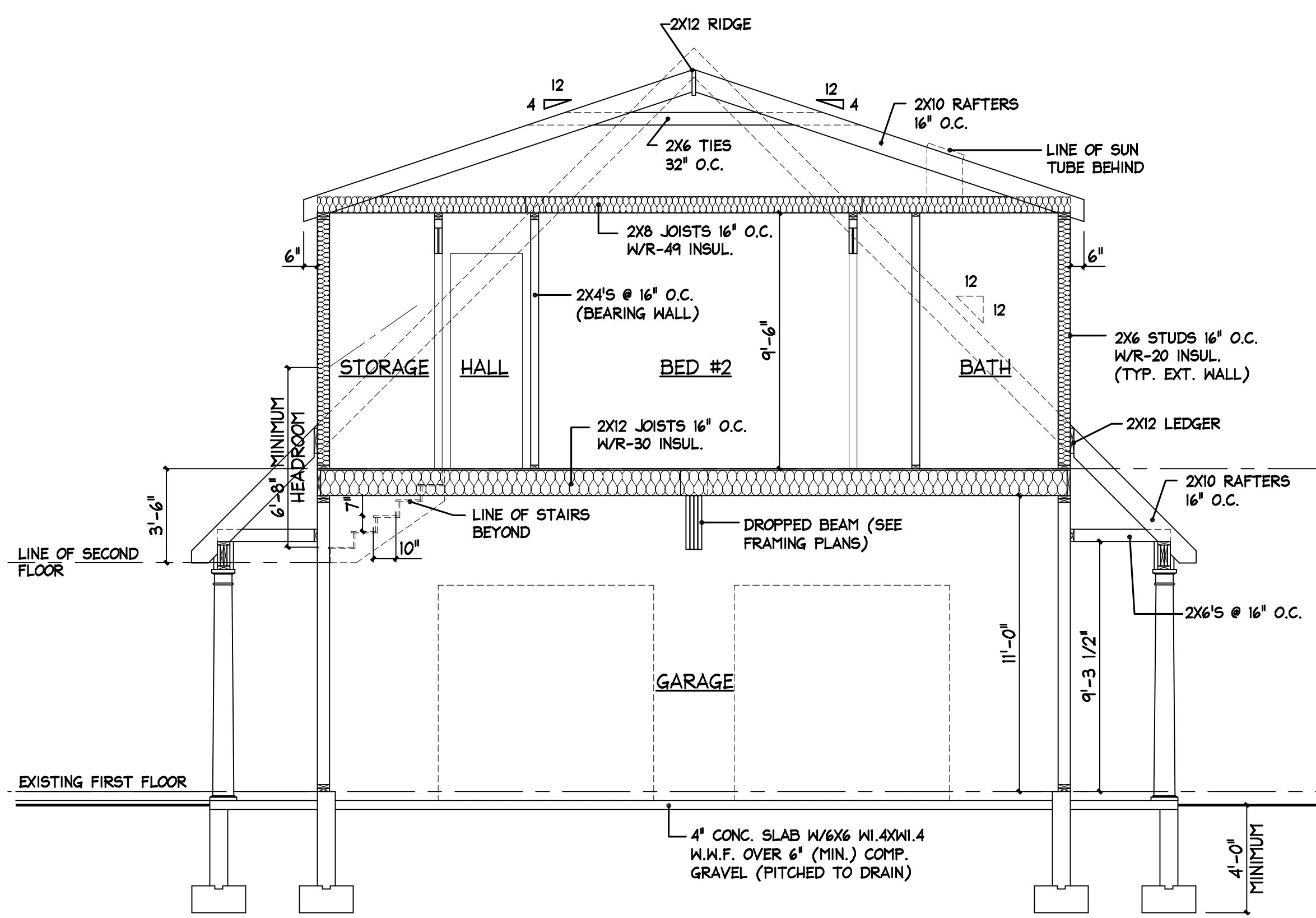
WEST ELEVATION

1/4" = 1'-0" ETR: EXISTING TO REMAIN



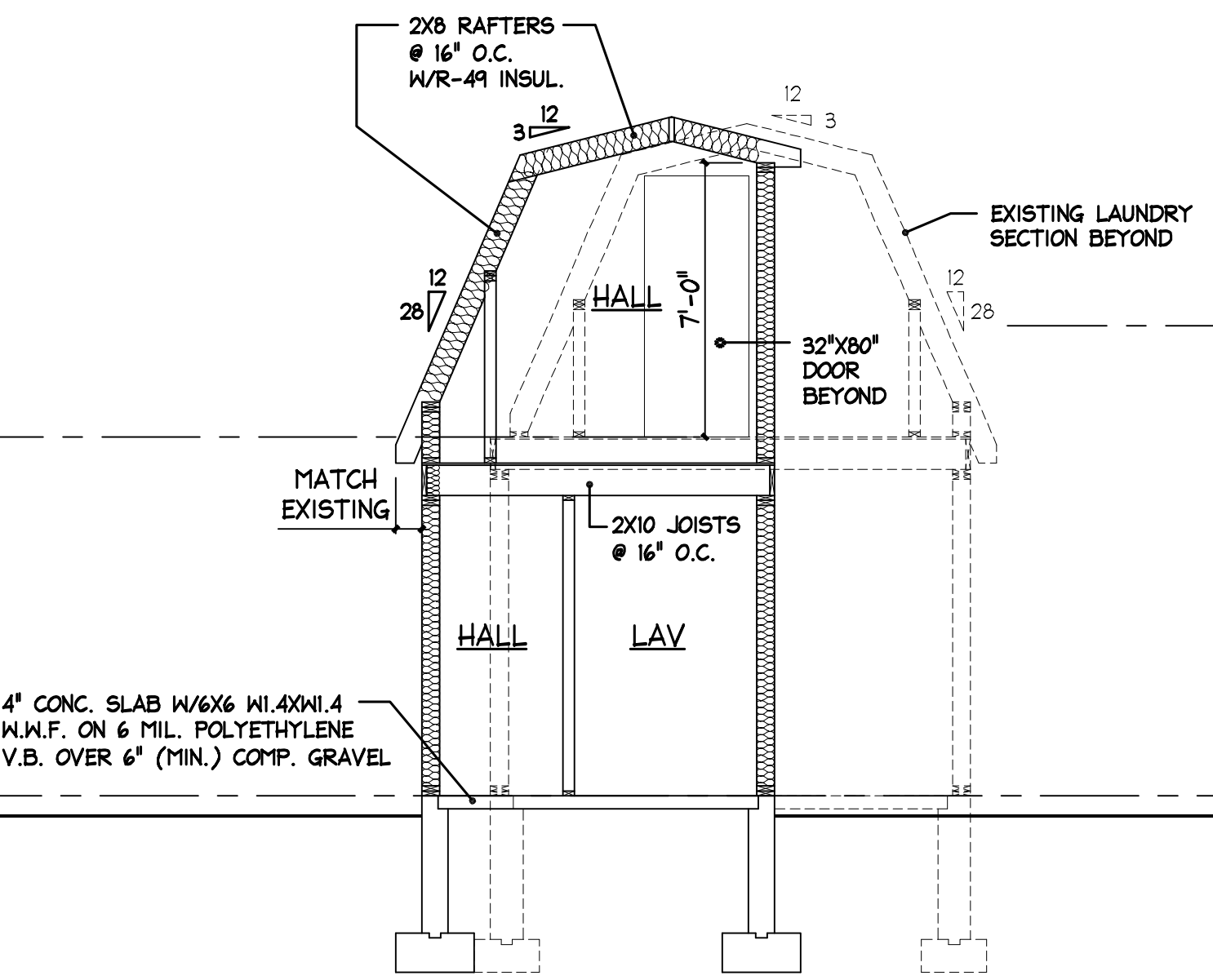
EAST ELEVATION

1/4" = 1'-0" ETR: EXISTING TO REMAIN



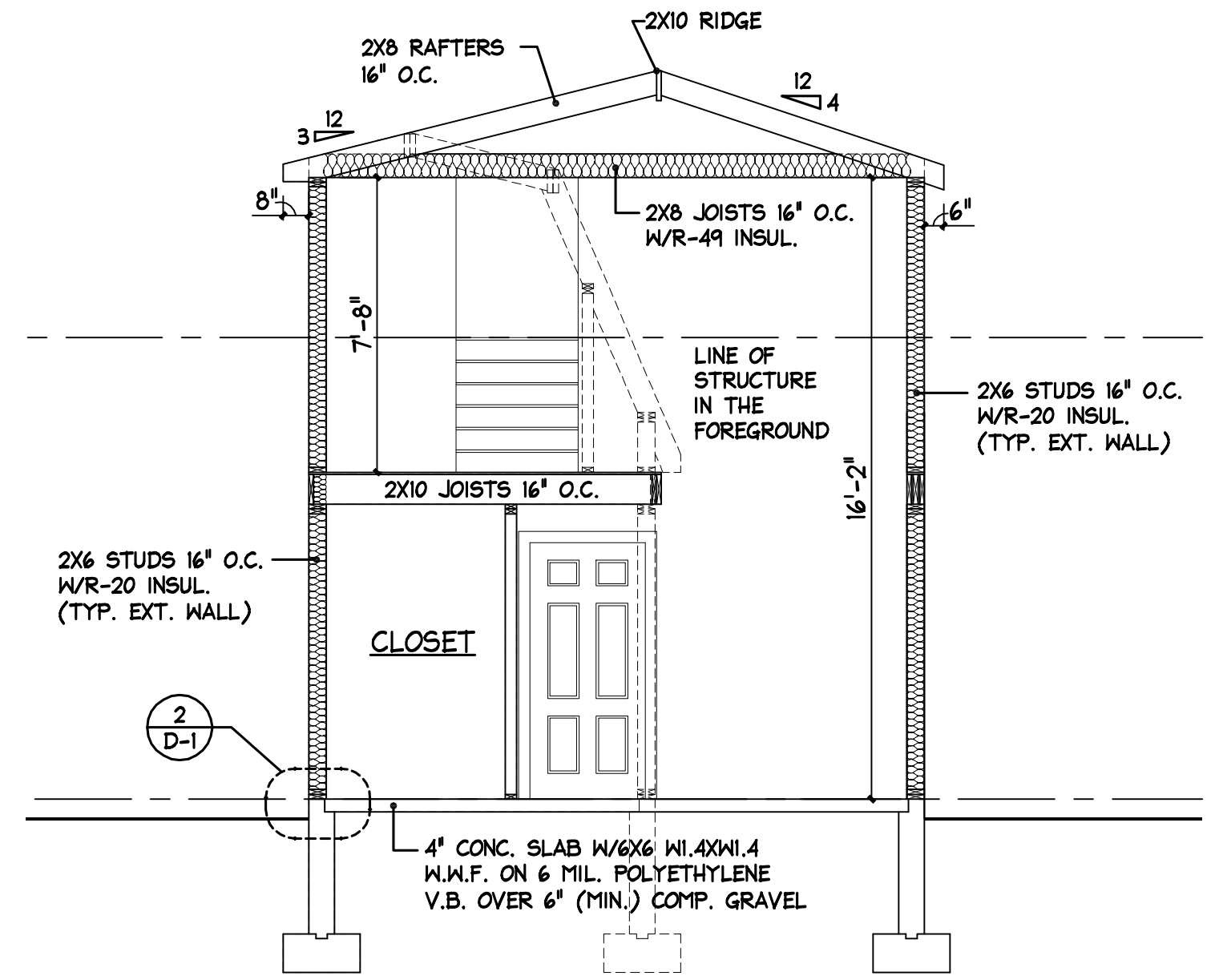
SECTION 1

1/4" = 1'-0"



SECTION 2

1/4" = 1'-0"



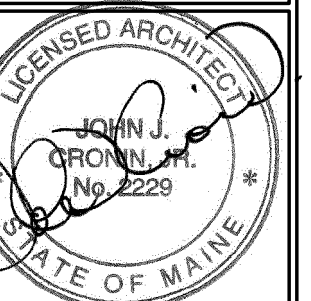
SECTION 3

1/4" = 1'-0"

© COPYRIGHT 2015 - M. Z. O. ARCHITECTURAL GROUP, INC. OWNS THE COPYRIGHT IN THIS DOCUMENT. NO REPRODUCTION OR OTHER USE IS ALLOWED WITHOUT THE EXPRESS WRITTEN CONSENT OF M. Z. O. ARCHITECTURAL GROUP, INC.

The MZO GROUP
 DESIGNERS • ARCHITECTS • PLANNERS
 IN THE *MAJOR* TRADITION

92 Montvale Avenue, Suite 450 • Shelburne, Massachusetts 02880
 Voice: 781.279.4444 • Fax: 781.279.4448 • E-Mail: mzo@mzogroup.com • www.mzogroup.com



"Beachside"
 60 Oaklawn Road-Peaks Island, Maine

Elevations & Sections
 SCALE: 1/4"=1'-0"

Date / Drawn by
 06/03/15
 Date/Revised by

JOB NO. 5810