

NOTE:  
SEE SECTION FOR ADDITIONAL INFORMATION.

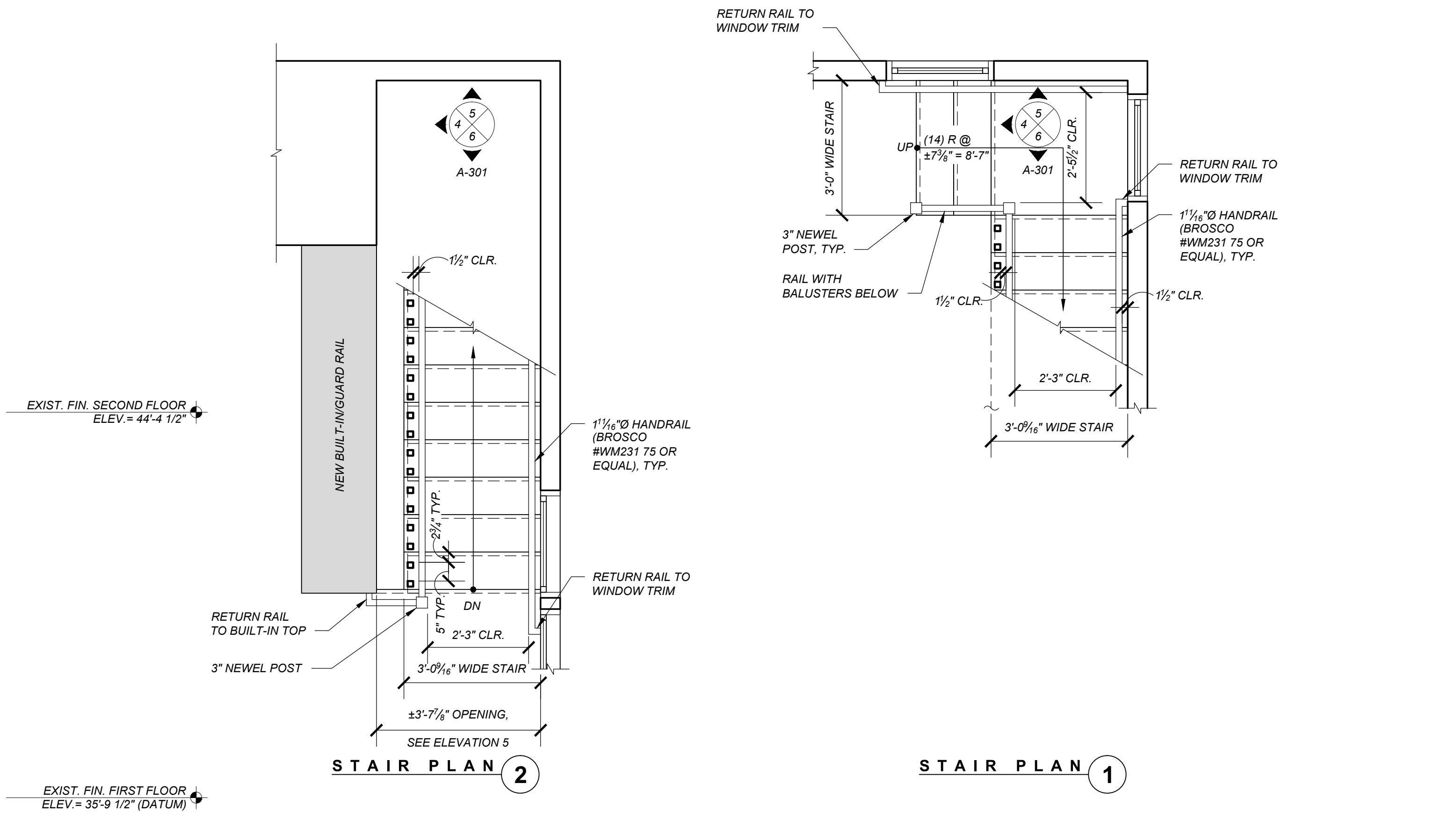
ELEVATION AT STAIR 6

NOTE:  
SEE SECTION FOR ADDITIONAL INFORMATION.

ELEVATION AT STAIR 5

NOTE:  
SEE SECTION FOR ADDITIONAL INFORMATION.

ELEVATION AT STAIR 4

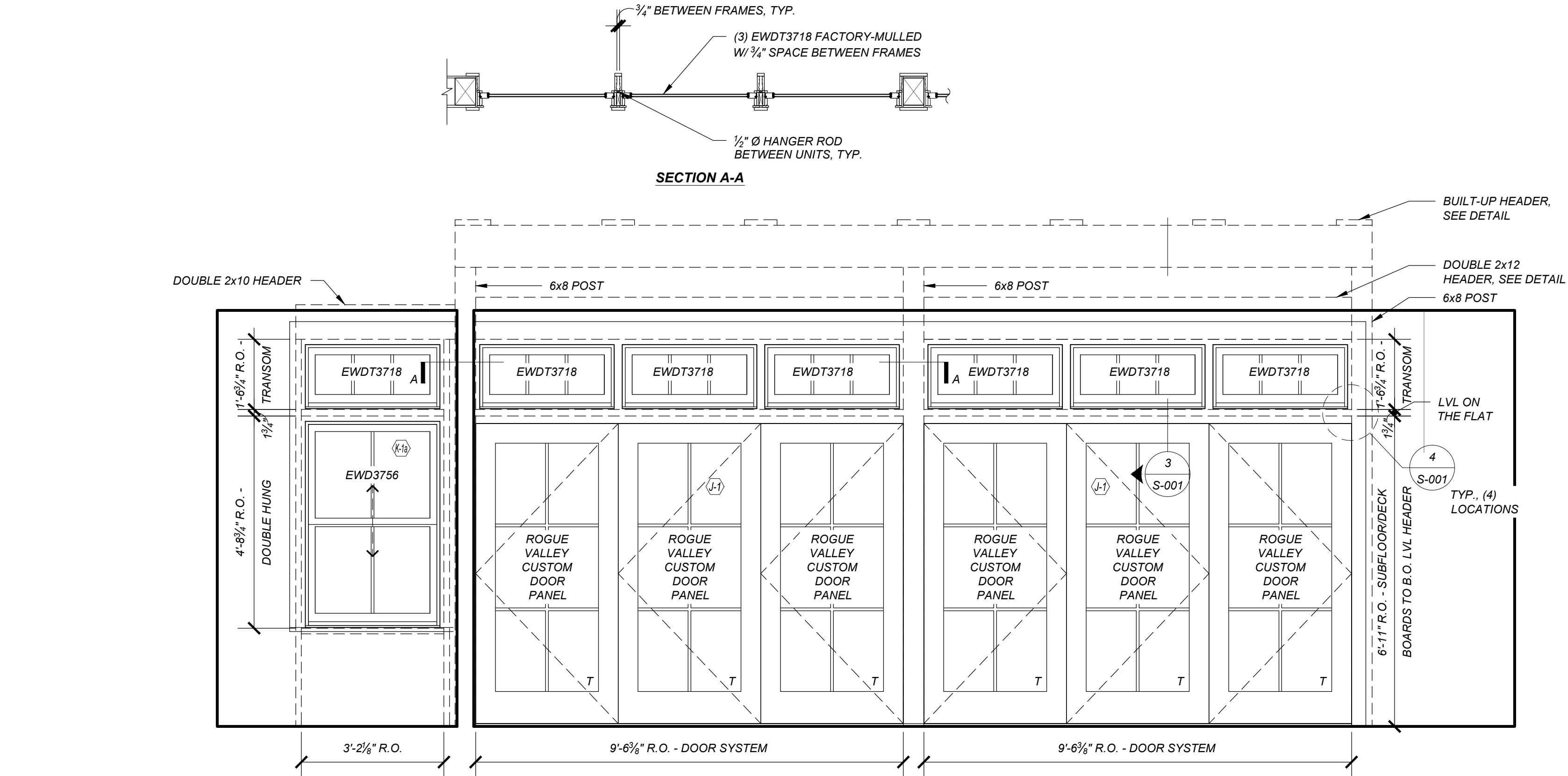


EXIST. FIN. SECOND FLOOR  
ELEV. = 44'-4 1/2"

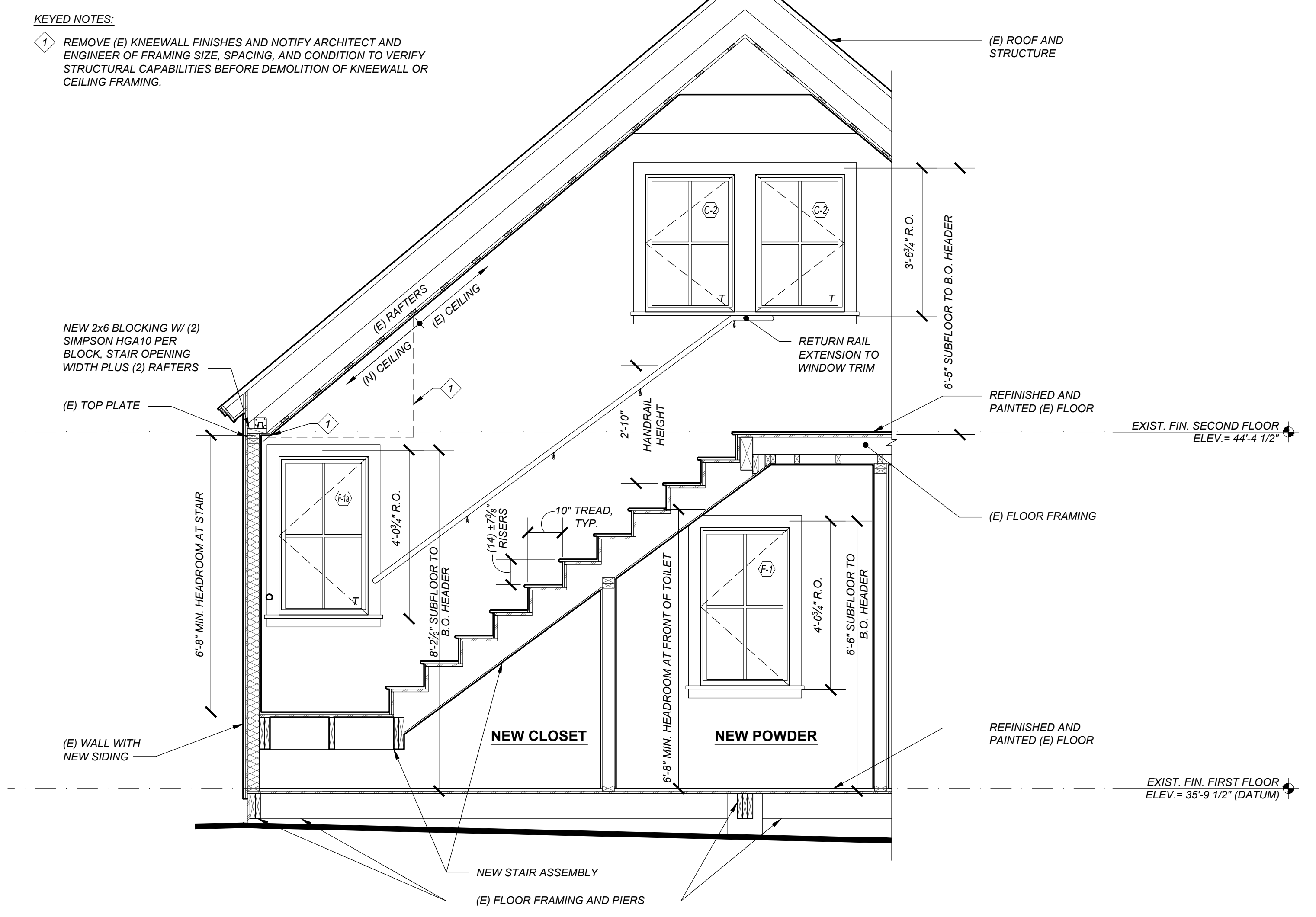
EXIST. FIN. FIRST FLOOR  
ELEV. = 35'-9 1/2" (DATUM)

STAIR PLAN 2

STAIR PLAN 1



FOLDING DOOR ASSEMBLY ELEVATION 7



KEYED NOTES:  
1 REMOVE (E) KNEEWALL FINISHES AND NOTIFY ARCHITECT AND ENGINEER OF FRAMING SIZE, SPACING, AND CONDITION TO VERIFY STRUCTURAL CAPABILITIES BEFORE DEMOLITION OF KNEEWALL OR CEILING FRAMING.

SECTION AT STAIR 3