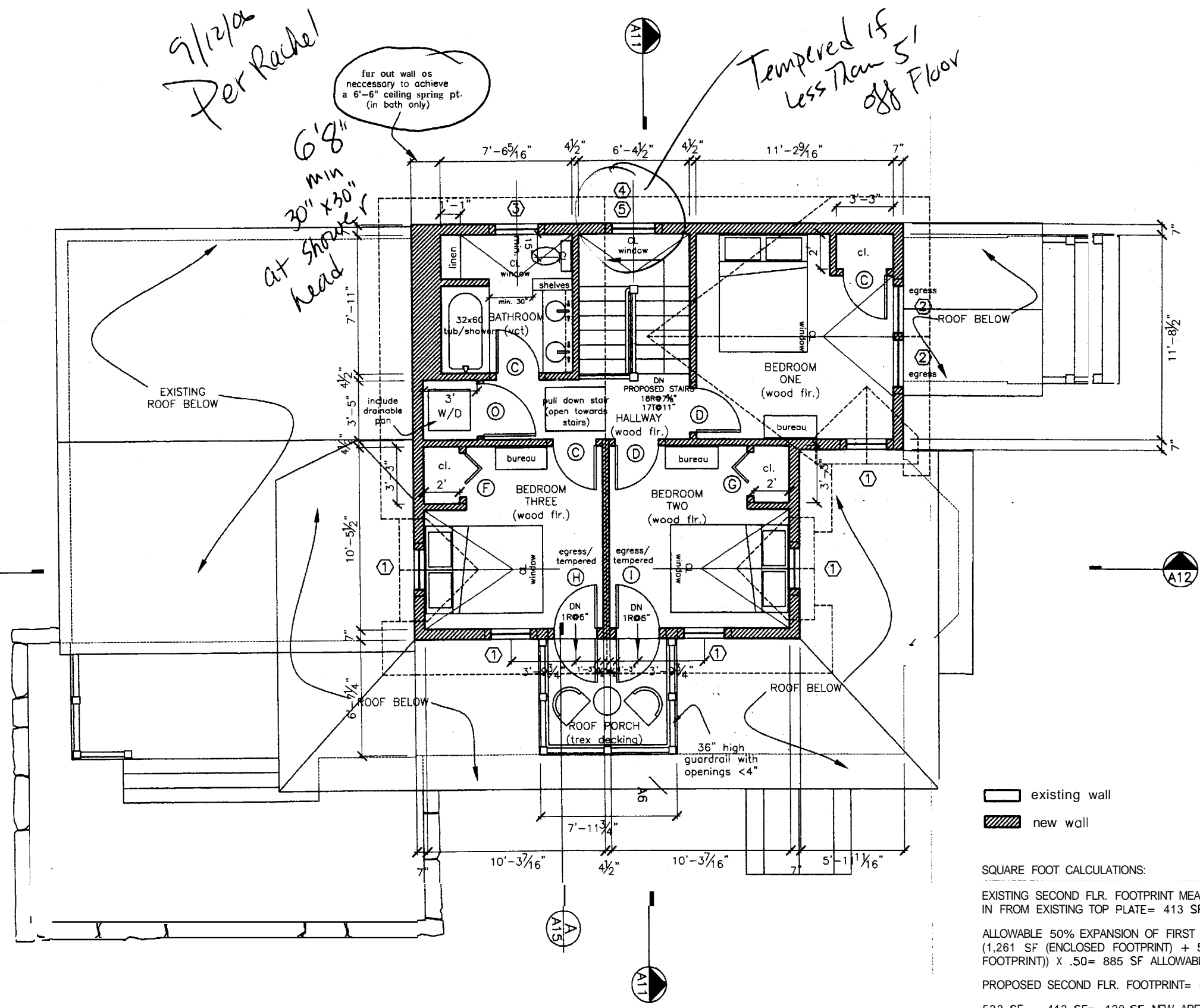


proposed  
second floor plan



(A) Proposed Second Floor Plan  
1/4" = 1'-0"

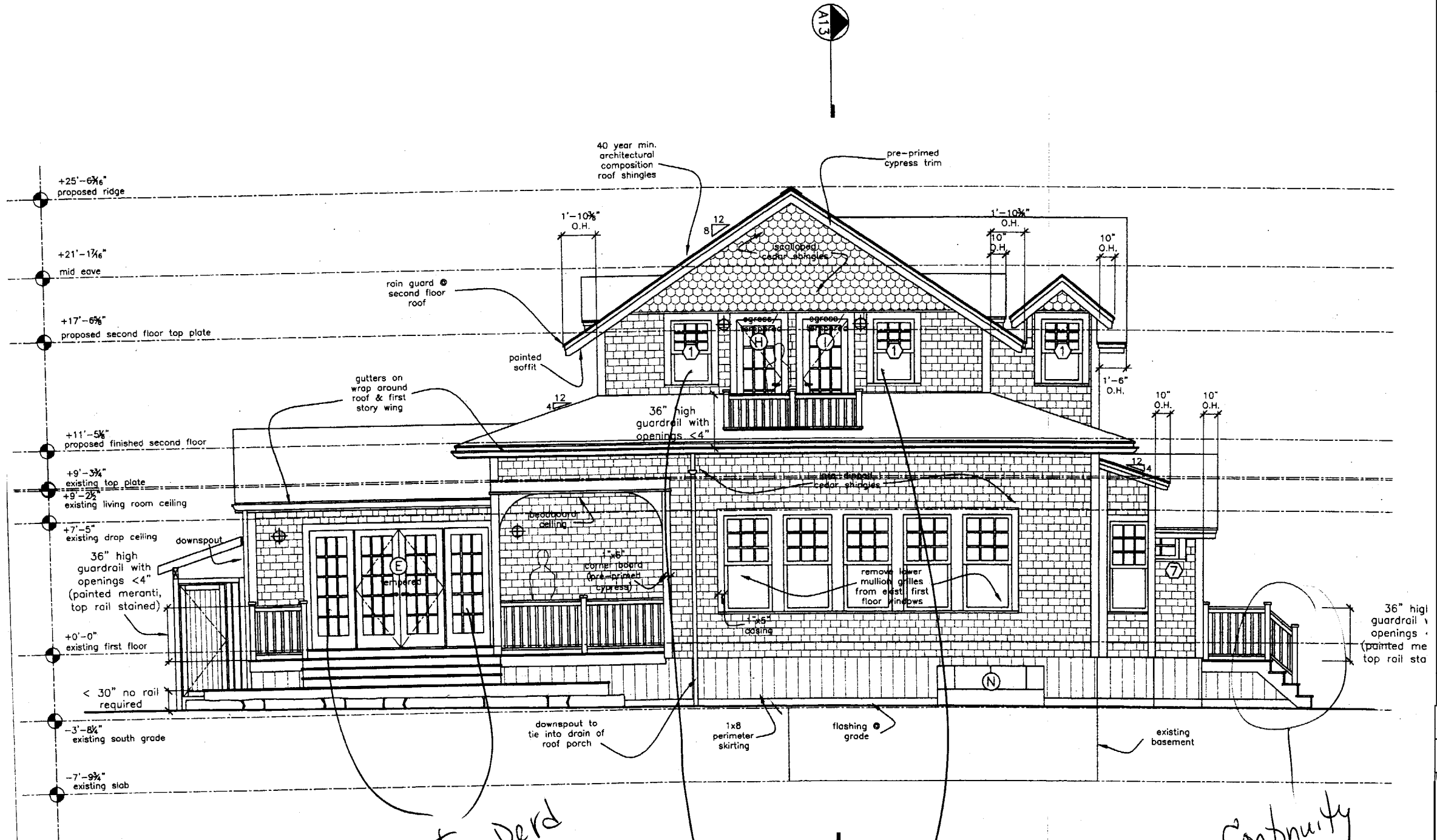
existing wall  
new wall

SQUARE FOOT CALCULATIONS:  
EXISTING SECOND FLR. FOOTPRINT MEASURED 4'-0"  
IN FROM EXISTING TOP PLATE= 413 SF (SEE PG. A4)  
ALLOWABLE 50% EXPANSION OF FIRST FLR. FOOTPRINT=  
(1,261 SF (ENCLOSED FOOTPRINT) + 508 SF (EXTERIOR  
FOOTPRINT)) X .50= 885 SF ALLOWABLE  
PROPOSED SECOND FLR. FOOTPRINT= 533 SF TOTAL  
533 SF - 413 SF= 120 SF NEW AREA < 885 SF

NOTE:  
1. ALL NEW FLOORING TO MATCH  
EXISTING PRE-FINISHED MICRO  
BEVELED RED OAK ON FIRST FLOOR

PROJECT <b>Raymond Residence</b>	
DATE 6.17.06	REVISED 7.24.06
SCALE 1/4" = 1'-0"	DRAWN BY <b>Rachel</b>
SITES	

**proposed  
west elevation**



**A** Proposed West Elevation  
1/4" = 1'-0"

*Tempered*

*Per Rachel  
9/12/06*

*Tempered*

*Continuity  
of handrail  
on stairs*

**PROJECT  
Raymond Residence**

DATE	REVISED
6.17.06	7.24.06

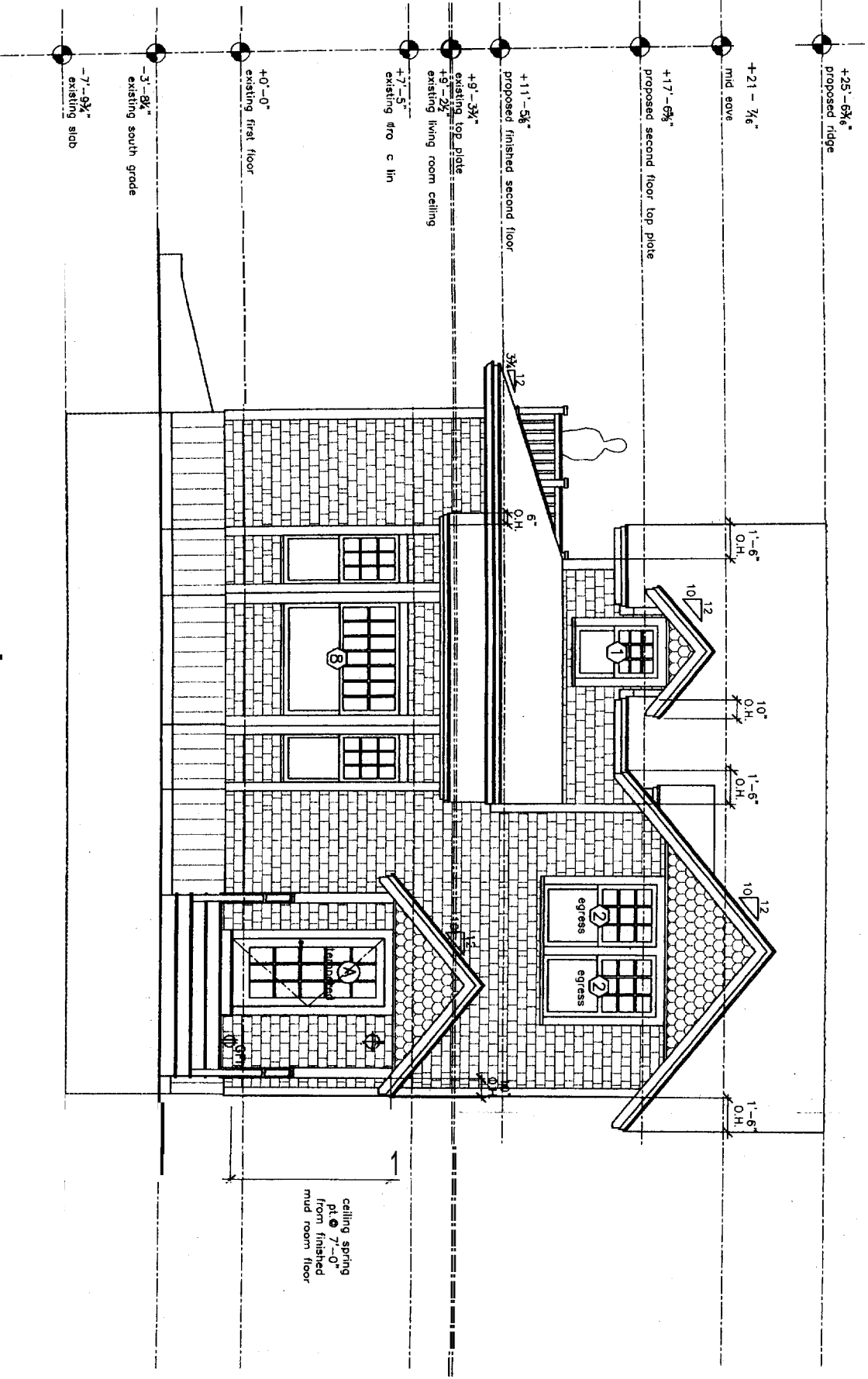
SCALE	DRAWN BY
1/4" = 1'-0"	Rachel

NOTES

**Thompson Johnson  
Woodworks**

115 island avenue  
peaks island me 04108  
207.766.5919

**proposed:  
south elevation**



**(A)** Proposed South Elevation  
1/4" = 1'-0"



PROJECT <b>Raymond Residence</b>	
DATE 6.17.06	REVISED 7.24.06
SCALE 1/4" = 1'-0"	DRAWN BY <b>Rachel</b>
NOTES	

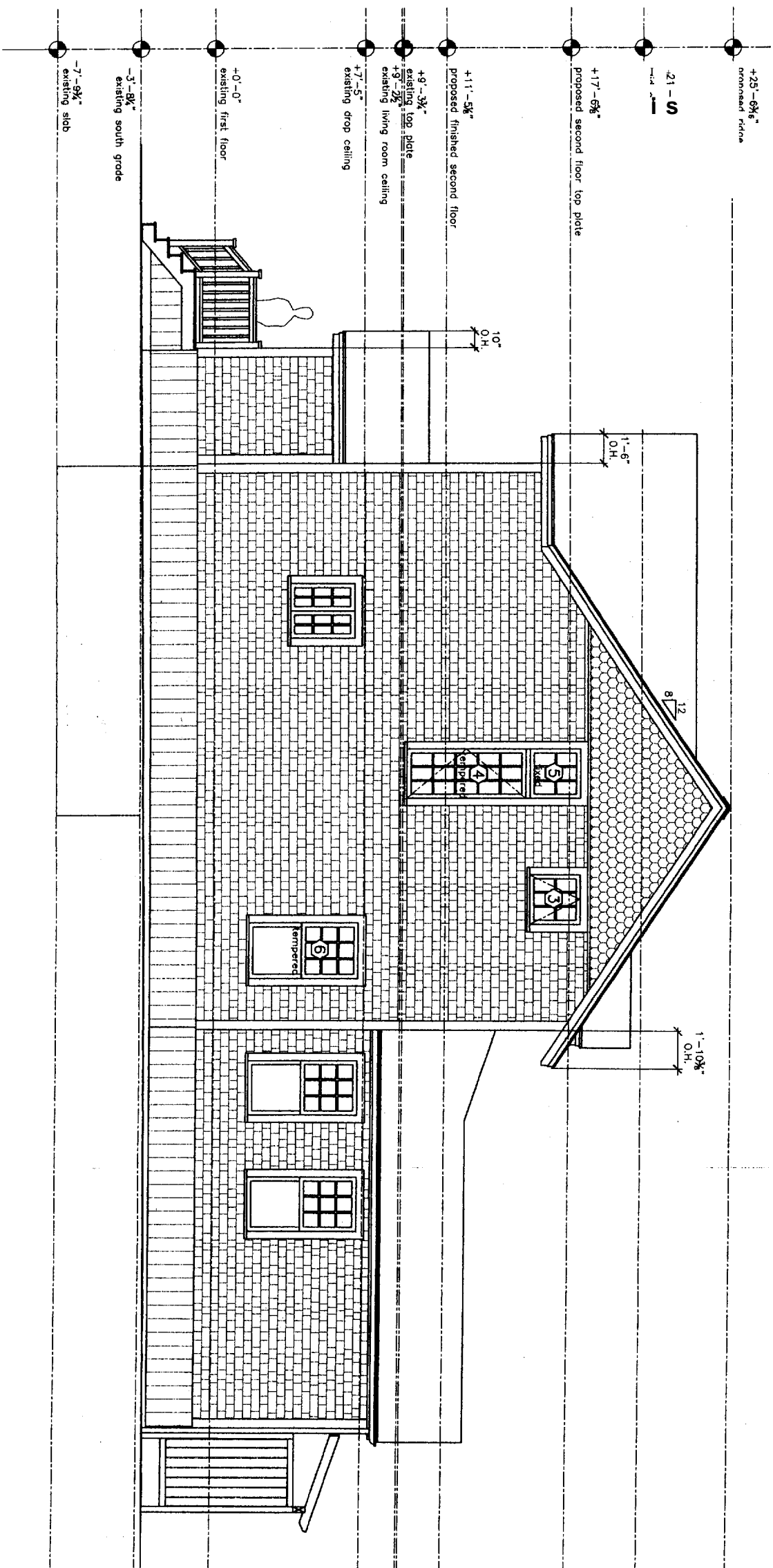
**A10**

**Thompson Johnson  
Woodworks**

115 island avenue  
peaks island me 04108  
207.766.5919

proposed:  
east elevation

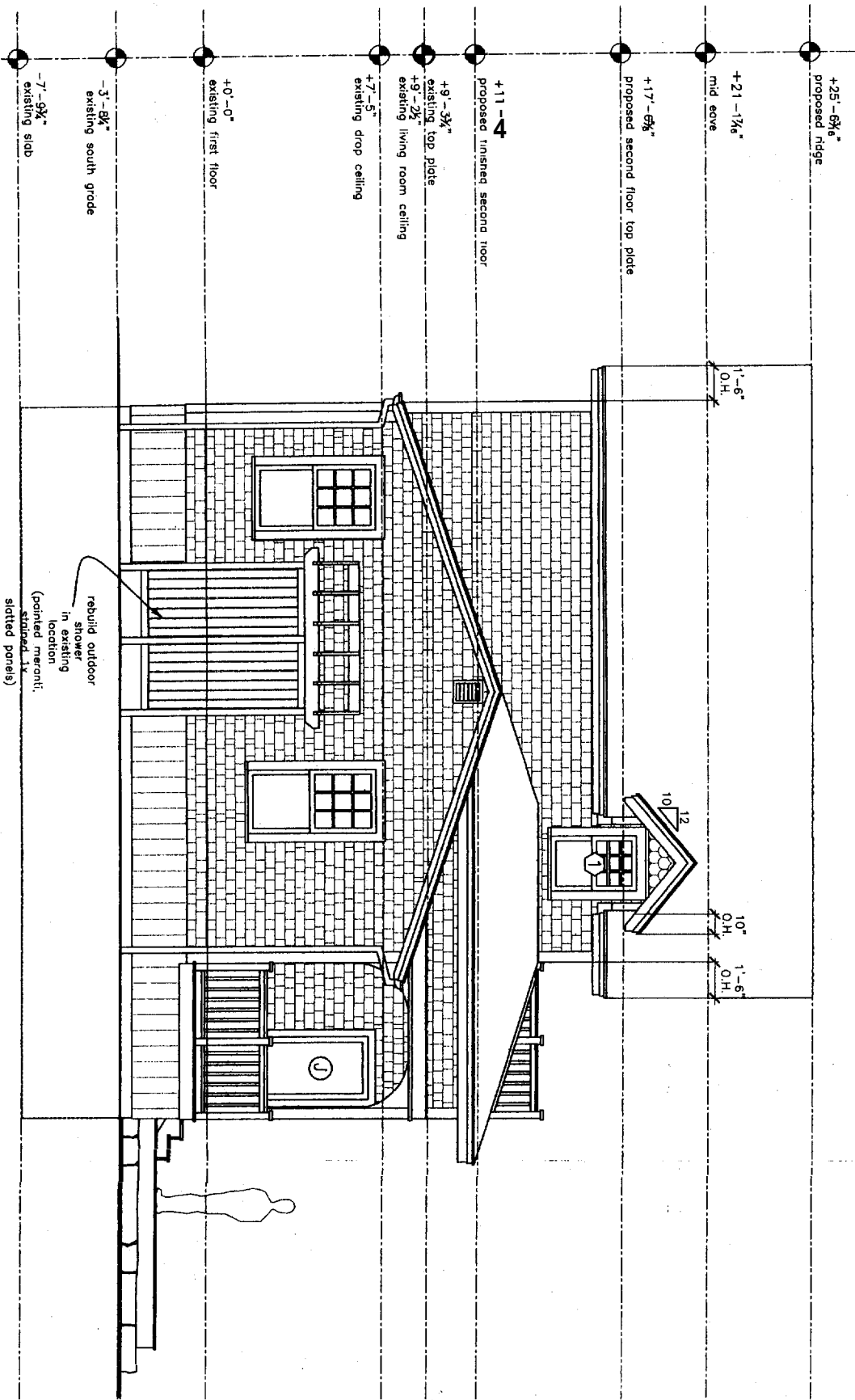
PROJECT	Raymond Residence
DATE	6.17.06
SCALE	1/2" = 1'-0"
NOTES	
REVISION	7.24.06
DRAWN BY	Rachel



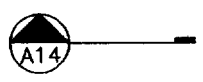
(A) Proposed East Elevation  
1/2" = 1'-0"



proposed:  
north elevation

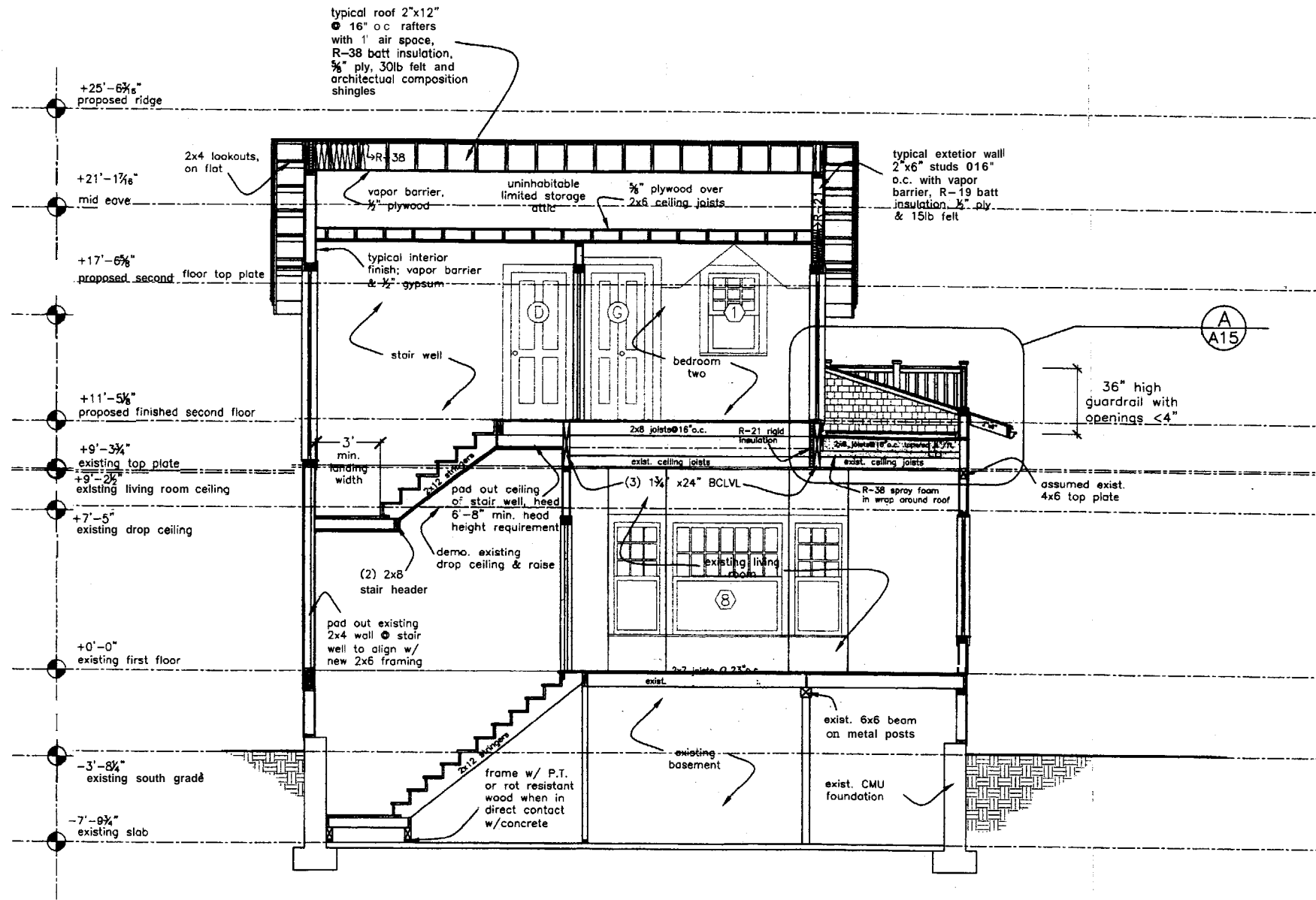


(A) Proposed North Elevation  
1/4" = 1'-0"



PROJECT <b>Raymond Residence</b>	
DATE 6.17.06	REVISED 7.24.06
SCALE 1/4" = 1'-0"	DRAWN BY Rachel
NOTES	

**proposed  
cross section**

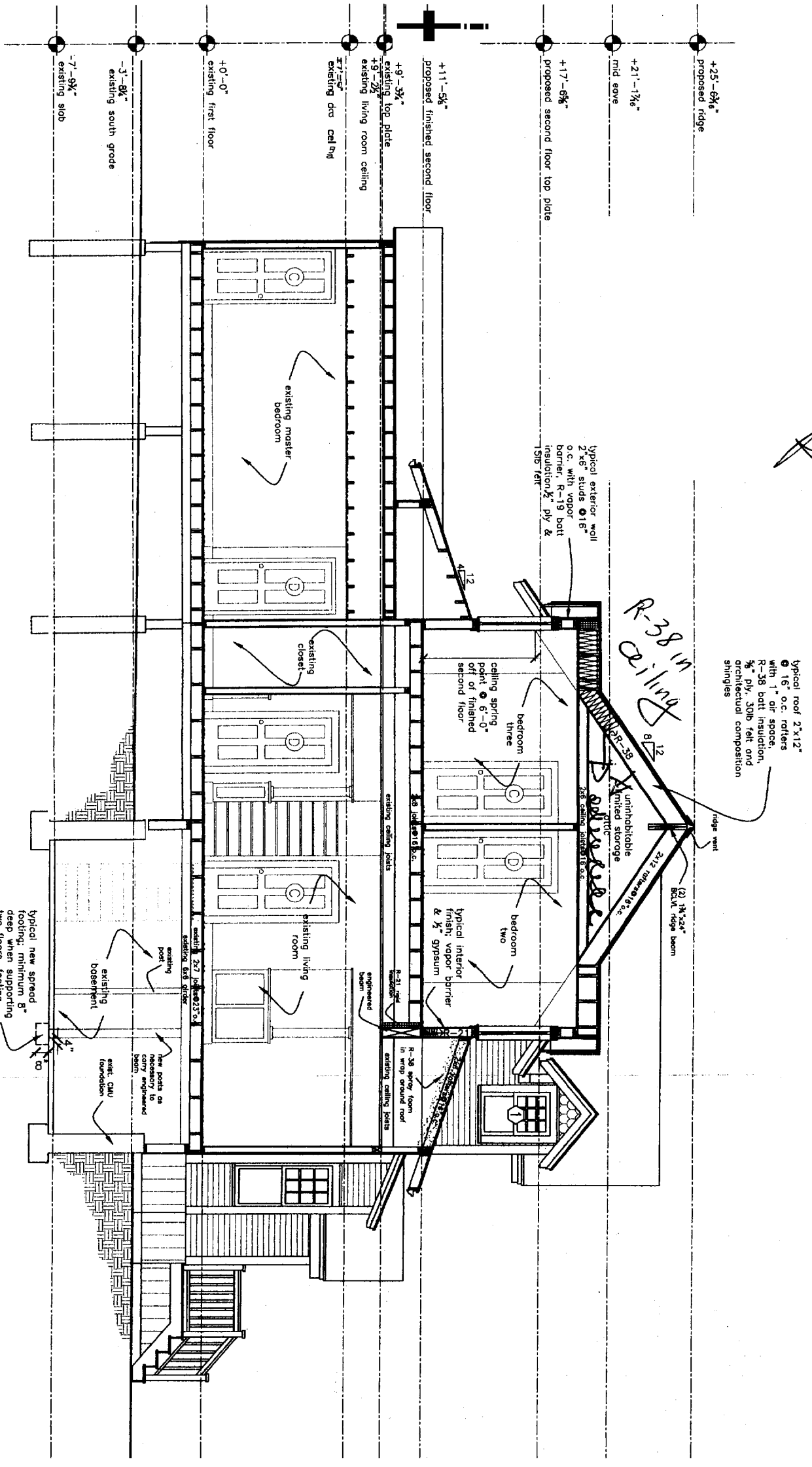


(A) Cross Section  
1/4" = 1'-0"

PROJECT <b>Raymond Residence</b>	
DATE 6.17.06	REVISED 7.24.06
SCALE 1/4" = 1'-0"	DRAWN BY <b>Rachel</b>
NOTES	

**Thompson Johnson Woodworks**  
 115 island avenue  
 Peaks Island me 04108  
 207.766.5919

proposed:  
 longitudinal section

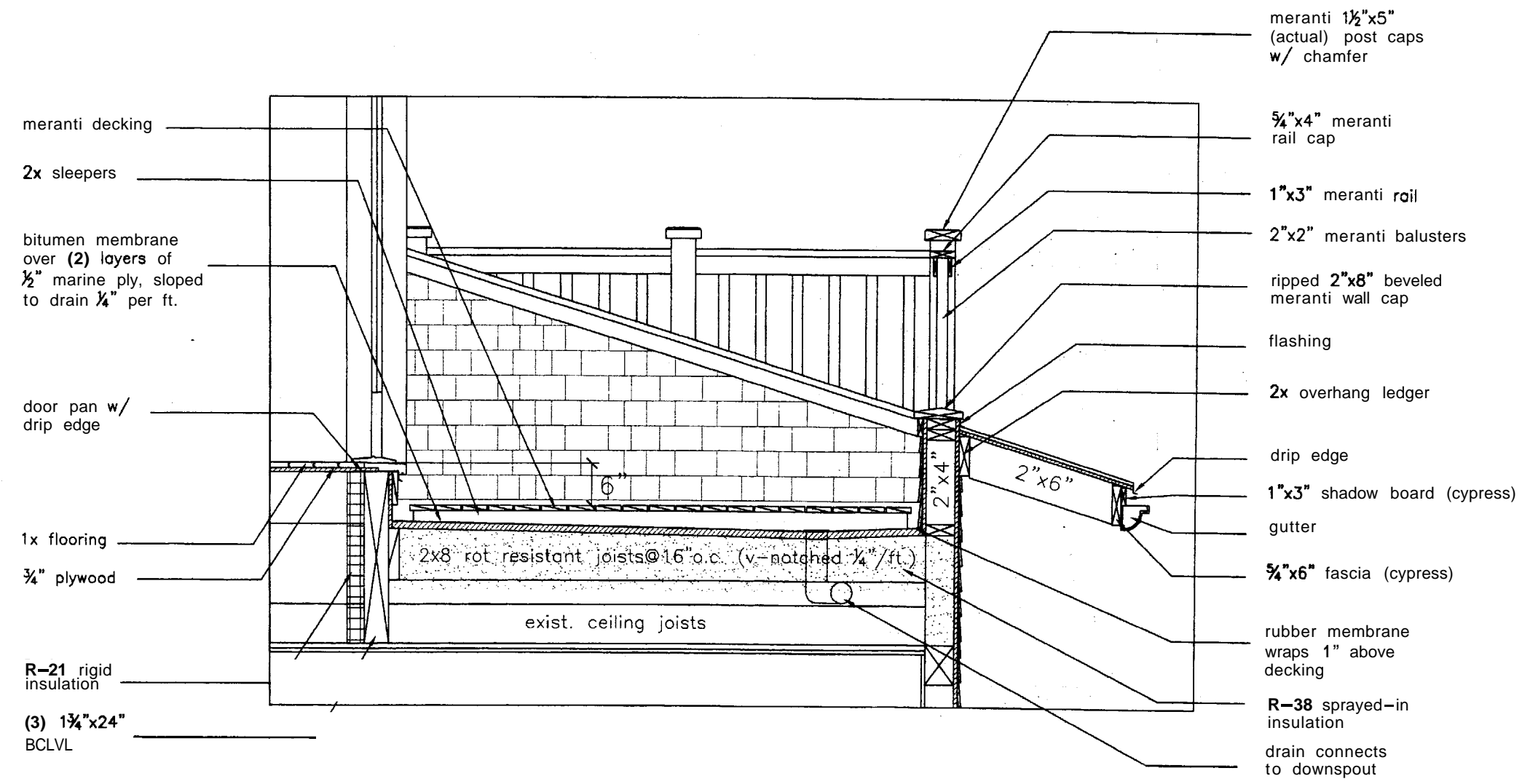


Ⓐ Longitudinal Section  
 1/4" = 1'-0"

<b>Raymond Residence</b>	
DATE 6.17.06	REVISED 7.24.06
SCALE 1/4" = 1'-0"	DRAWN BY Rachel
NOTES	

**A14**

**proposed:  
details**

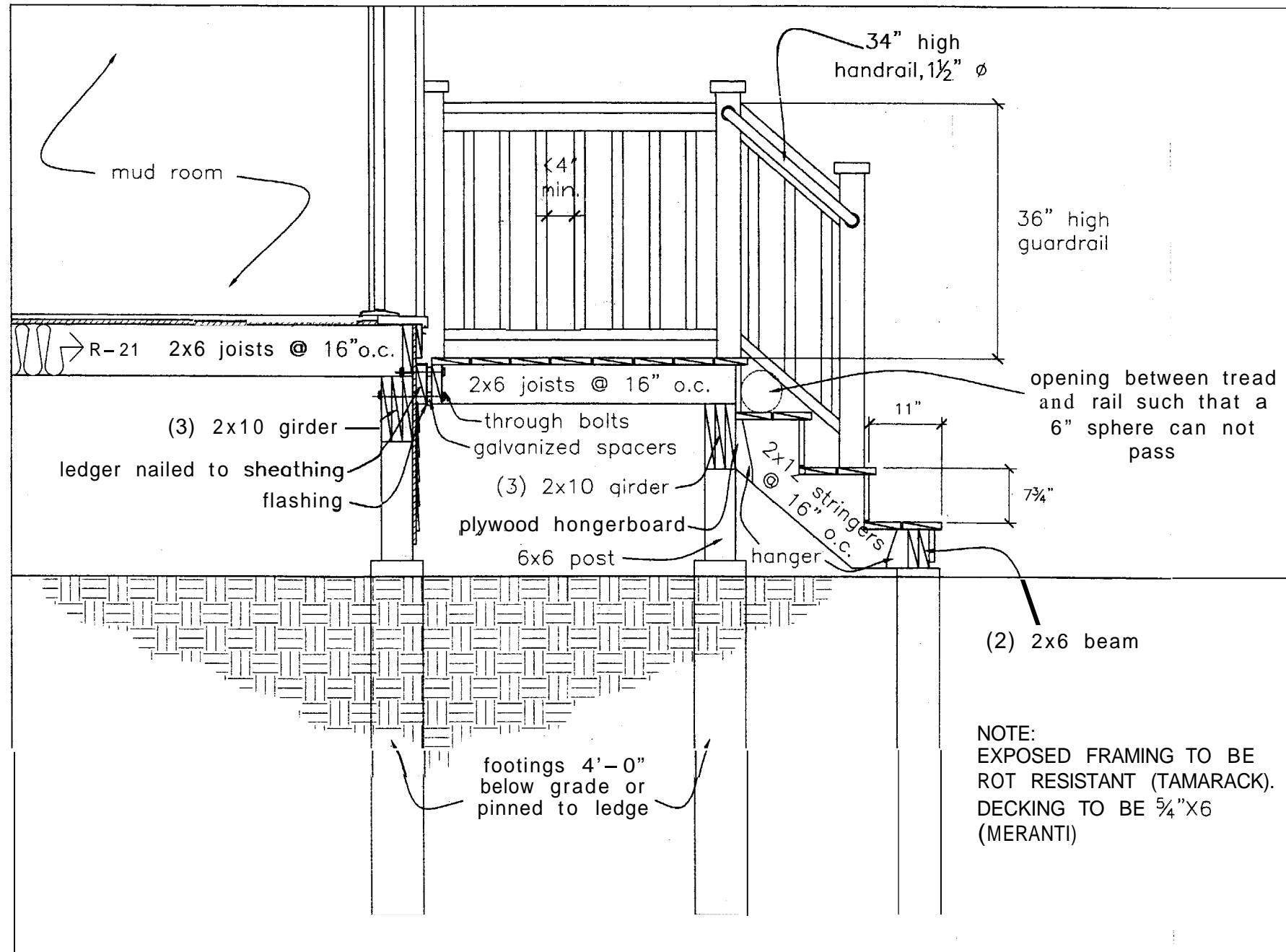


Ⓐ Second Floor Porch and Deck Detail  
1"=1'-0"

DATE	6.17.06	REVISED	7.24.06
SCALE	1"=1'-0"	DRAWN BY	Rachel



**proposed:  
details**



NOTE:  
EXPOSED FRAMING TO BE  
ROT RESISTANT (TAMARACK).  
DECKING TO BE 5/4"X6  
(MERANTI)

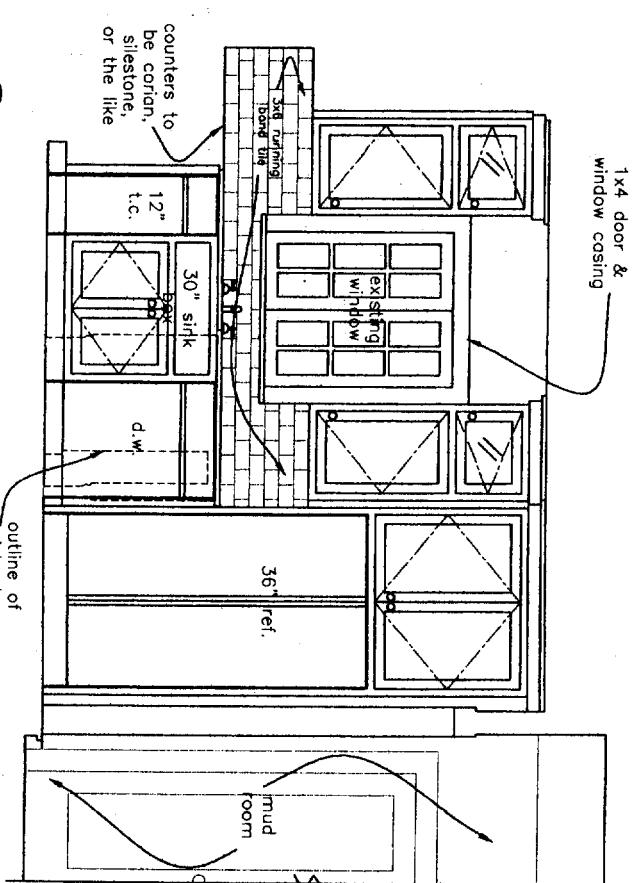
**A** Second Floor Porch and Deck Detail  
1"=1'-0"

DATE 6.17.06	RMSE 24.06
SCALE 1"=1'-0"	DRAWN BY <b>Rachel</b>

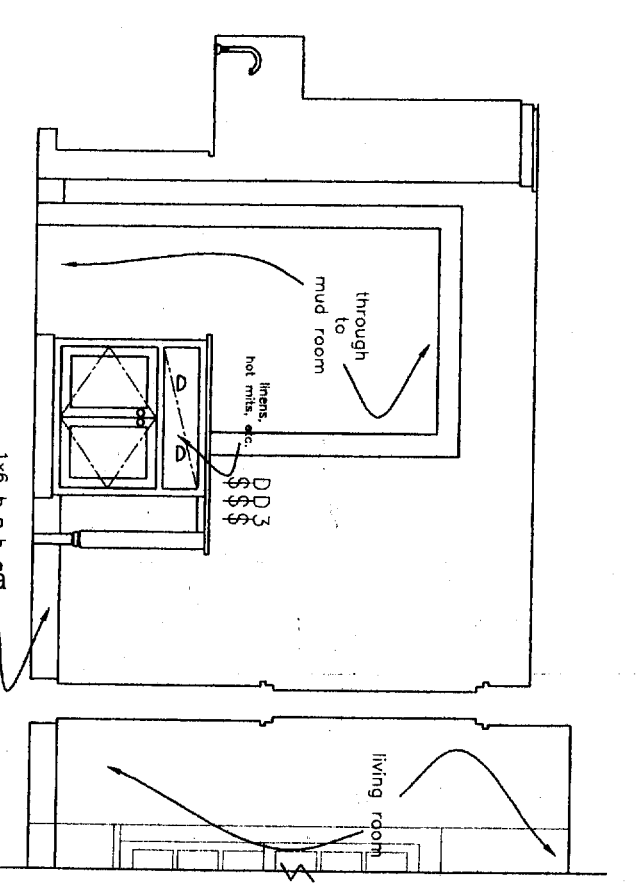
**Thompson Johnson  
Woodworks**

115 island avenue  
peaks island me 04108  
207.766.5919

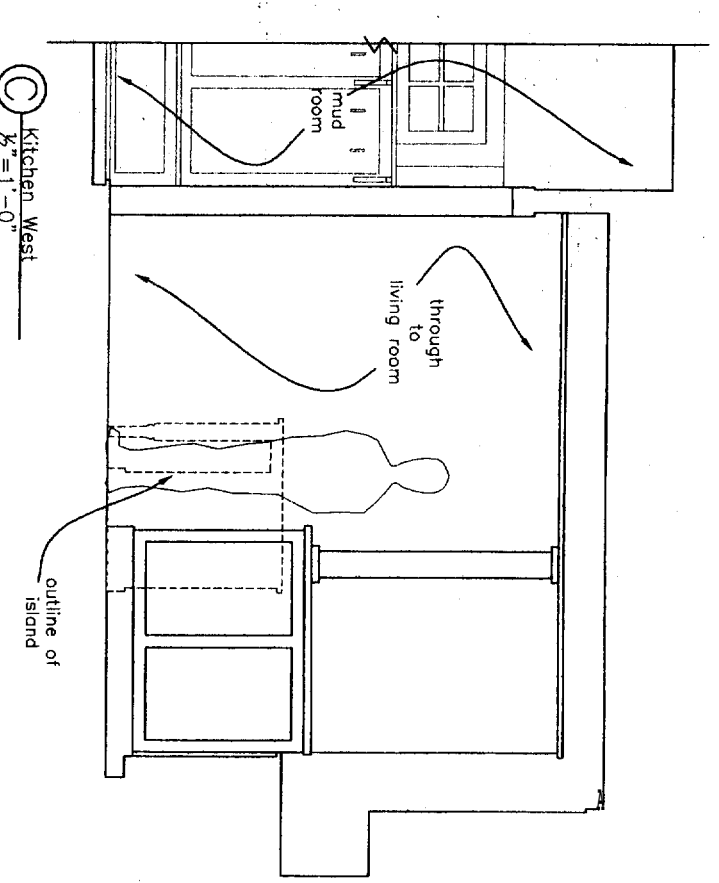
interior elevations



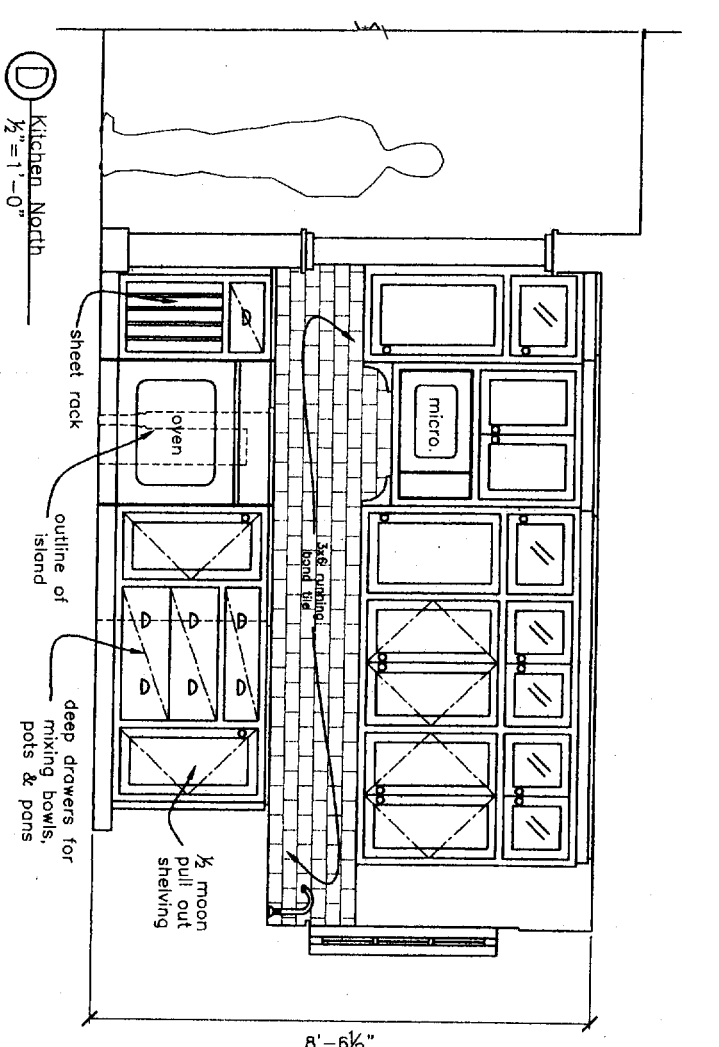
**A** Kitchen East  
1/2" = 1'-0"



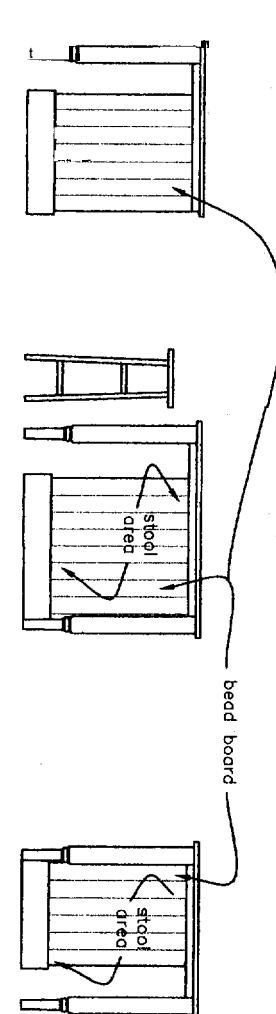
**B** Kitchen South  
1/2" = 1'-0"



**C** Kitchen West  
1/2" = 1'-0"



**D** Kitchen North  
1/2" = 1'-0"



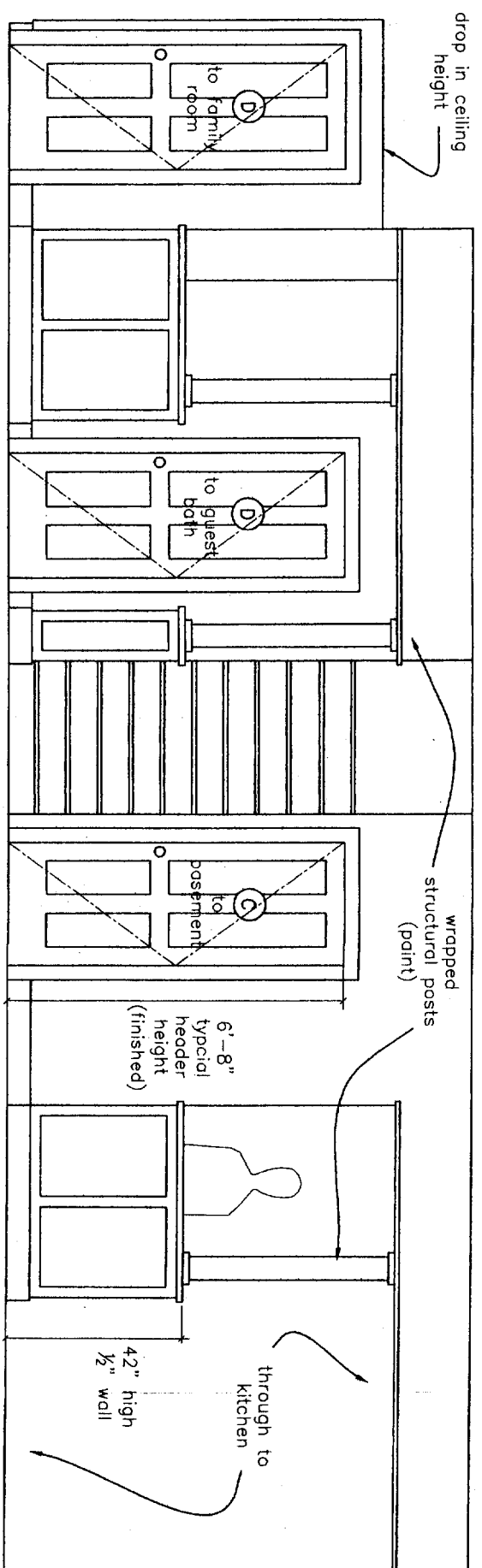
**E** Island West  
1/2" = 1'-0"

**F**

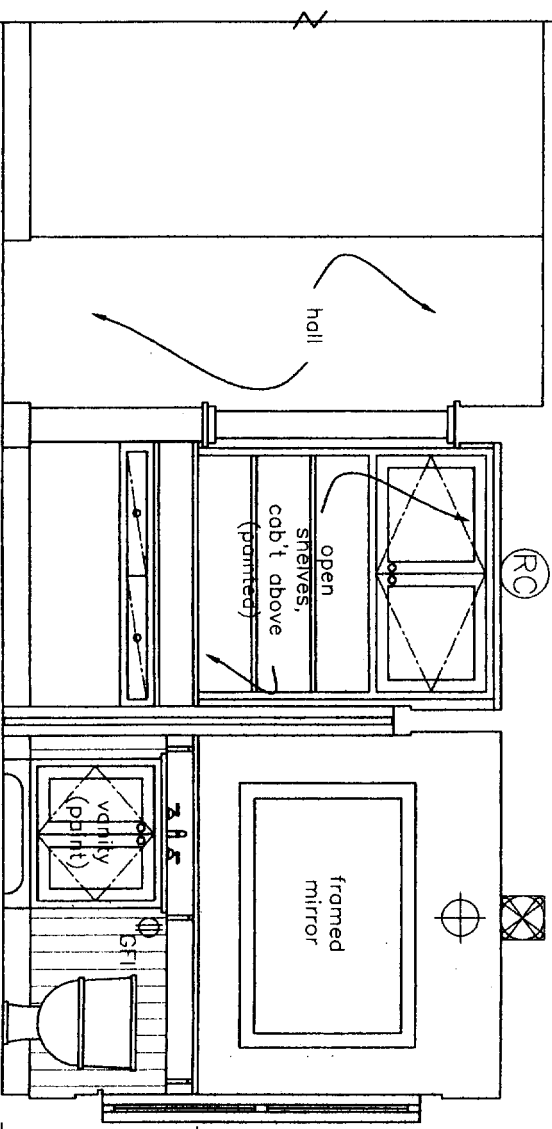
**G** Island East  
1/2" = 1'-0"

PROJECT		Raymond Residence	
DATE	6.17.06	REVISED	7.24.06
SCALE	1/2" = 1'-0"	DRAWN BY	Rachel
NOTES			

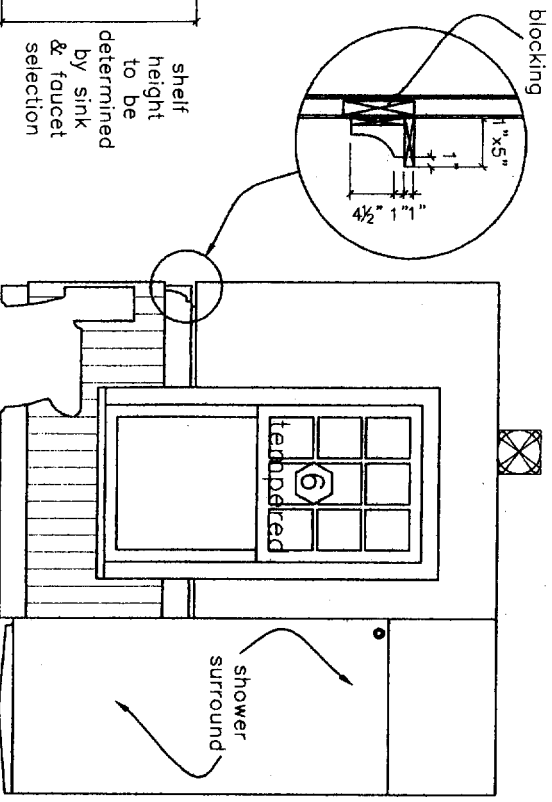
interior elevations



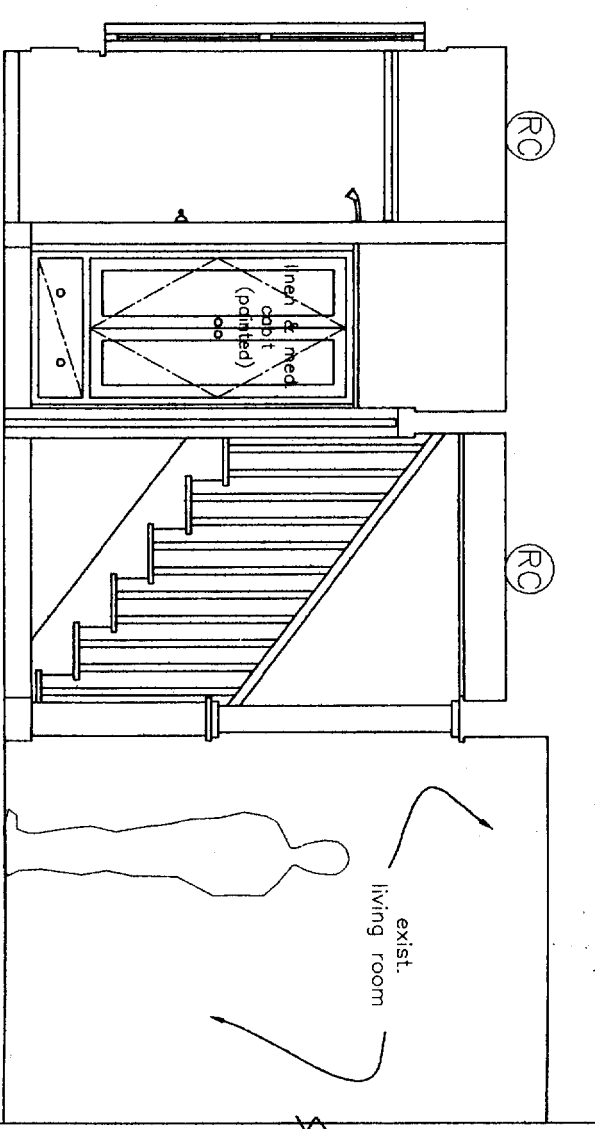
**A** Living Room East  
1/2" = 1'-0"



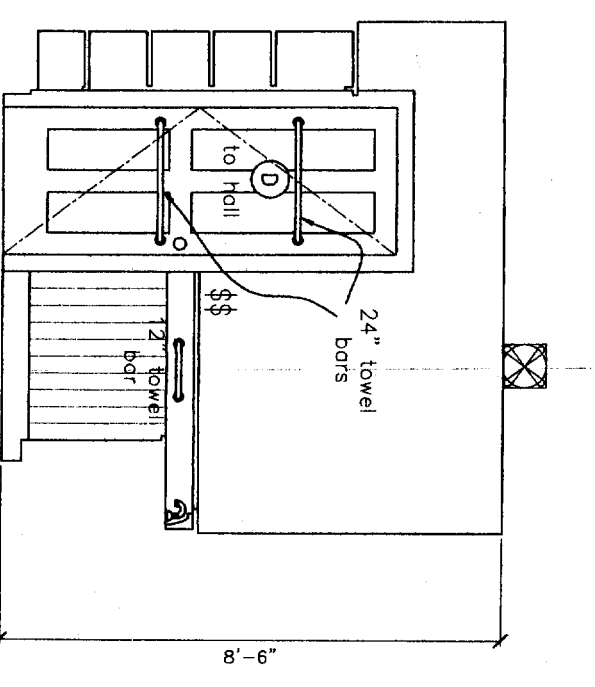
**B** Home Office/Guest Bed North  
1/2" = 1'-0"



**C** Guest Bath East  
1/2" = 1'-0"

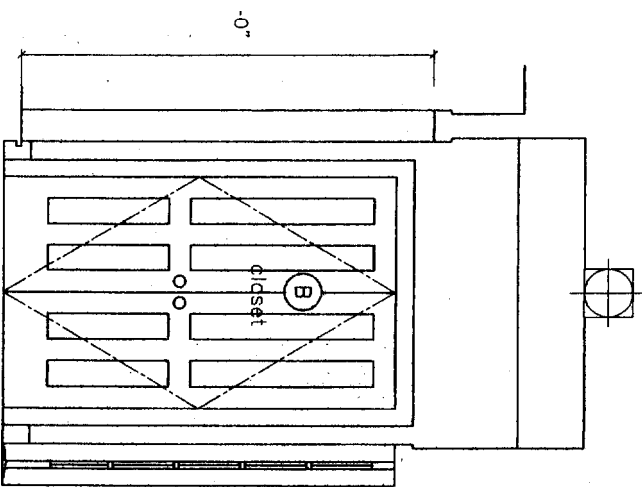


**D** Home Office/Guest Bath South  
1/2" = 1'-0"

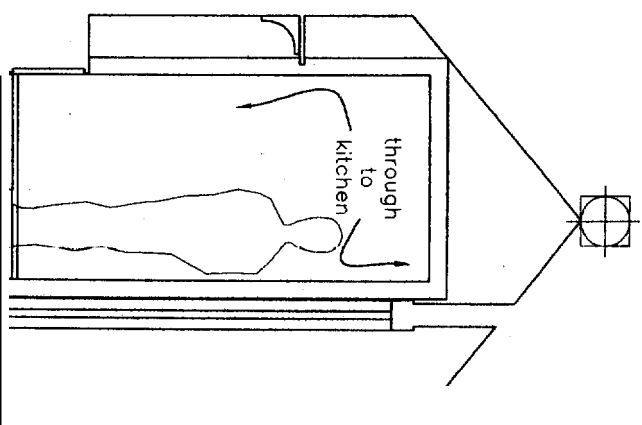


**E** Guest Bath West  
1/2" = 1'-0"

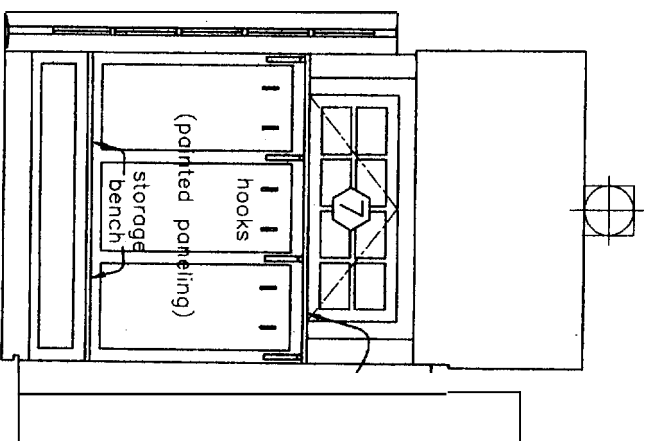
PROJECT <b>Raymond Residence</b>	
DATE 6.17.06	REVISED 7.24.06
SCALE 1/2" = 1'-0"	DRAWN BY Rachel
NOTES	



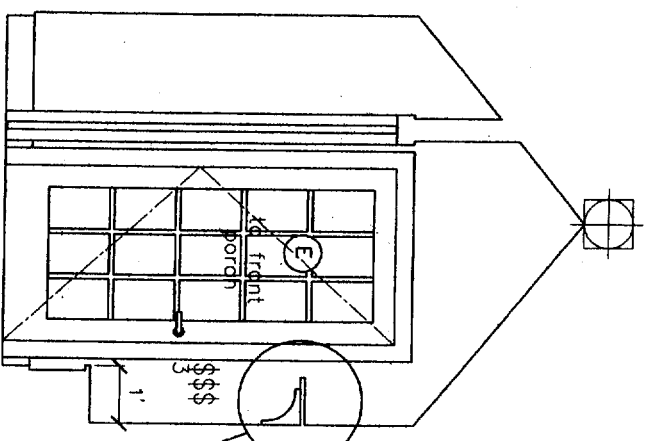
**A** Mud Room East  
1/2" = 1'-0"



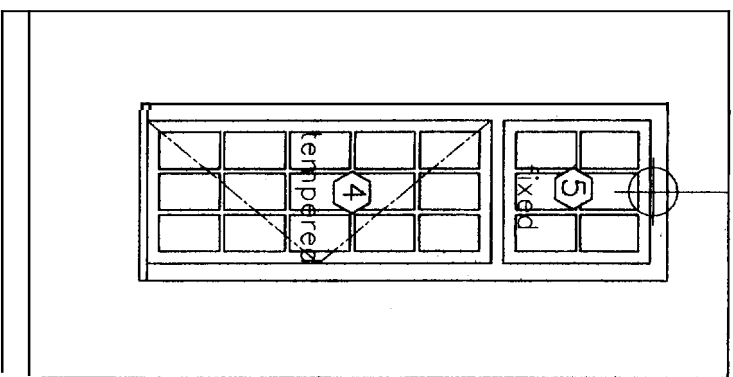
**B** Mud Room North  
1/2" = 1'-0"



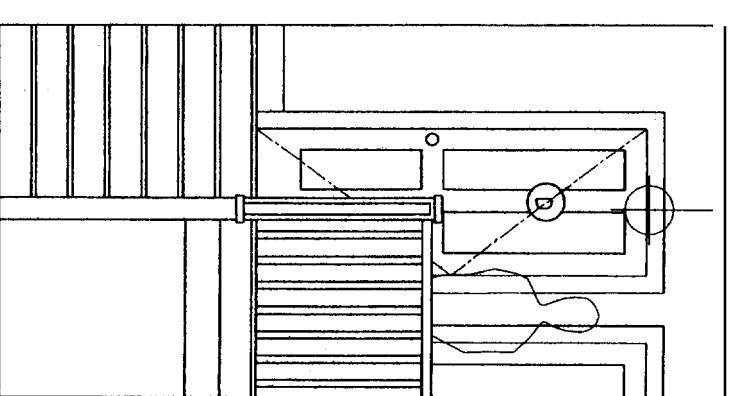
**C** Mud Room West  
1/2" = 1'-0"



**D** Mud Room South  
1/2" = 1'-0"



**E** Stairwell East  
1/2" = 1'-0"



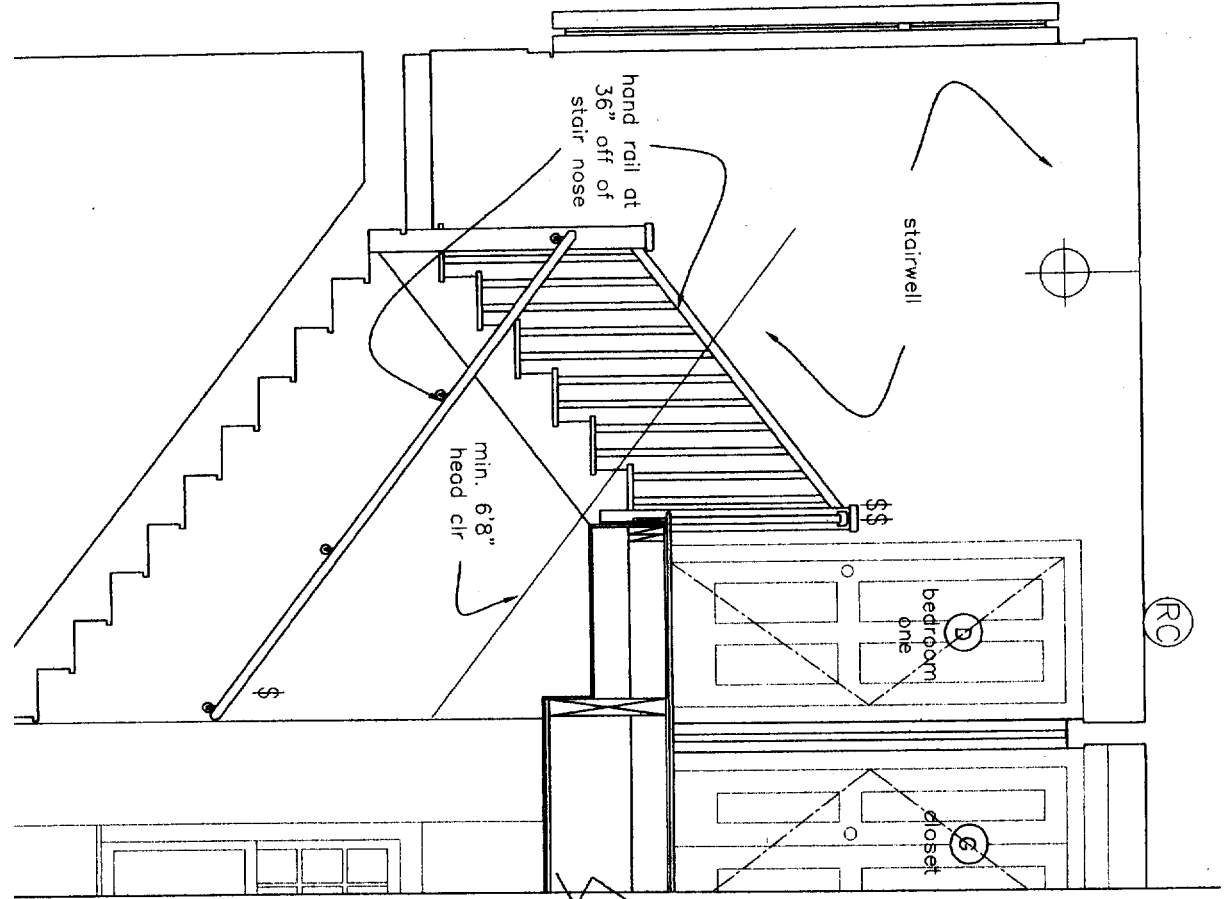
**F** Stairwell West  
1/2" = 1'-0"

PROJECT	
<b>Raymond Residence</b>	
DATE	REVISION
6.17.06	7.24.06
SCALE	DRAWN BY
1/2" = 1'-0"	Rachel
NOTES	

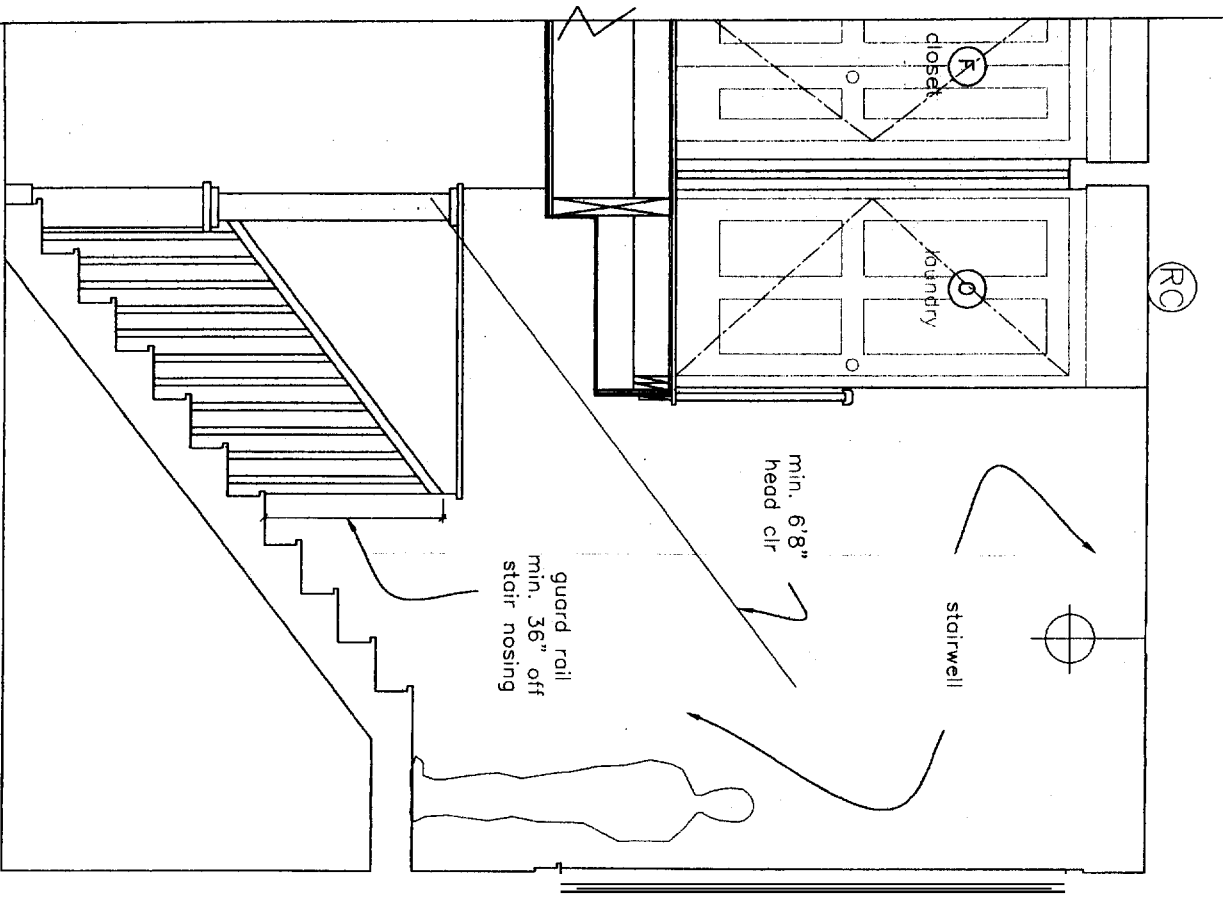
**Thompson Johnson  
Woodworks**

115 Island Avenue  
Peaks Island ME 04108  
207.766.5919

interior elevations



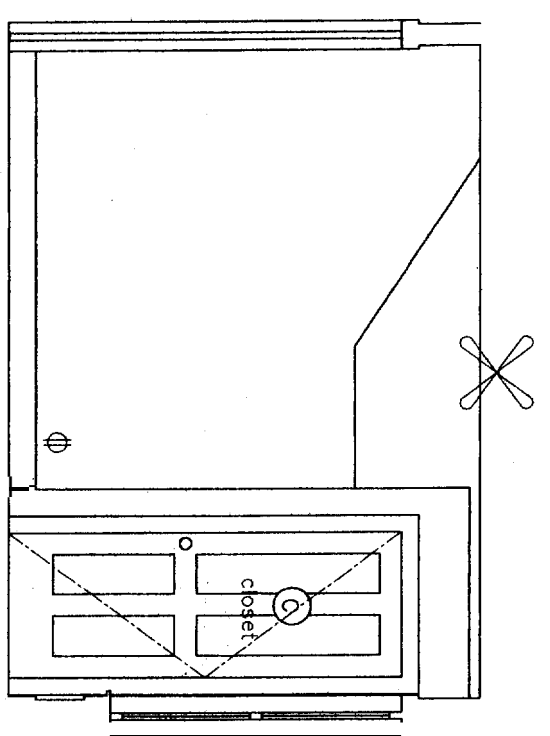
**A** Stairwell South  
1/2" = 1'-0"



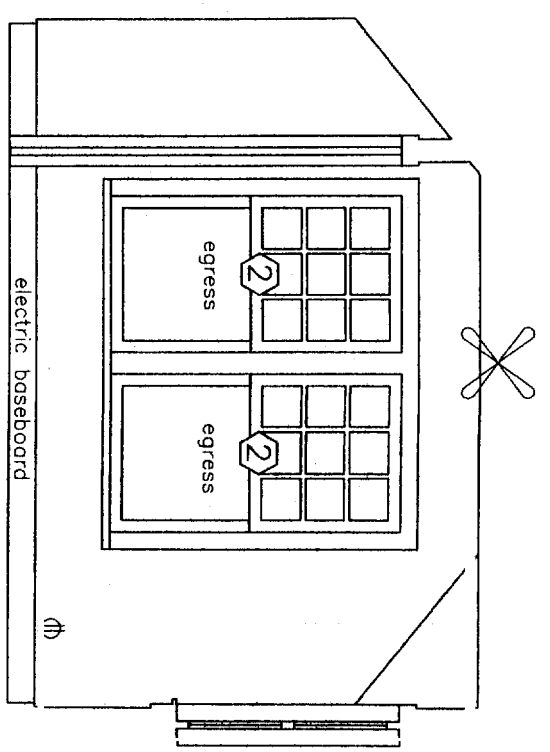
**A** Stairwell North  
1/2" = 1'-0"

PROJECT	
Raymond Residence	
DATE	REVISED
6.17.06	7.24.06
SCALE	DRAWN BY
1/2" = 1'-0"	Rachel
NOTES	

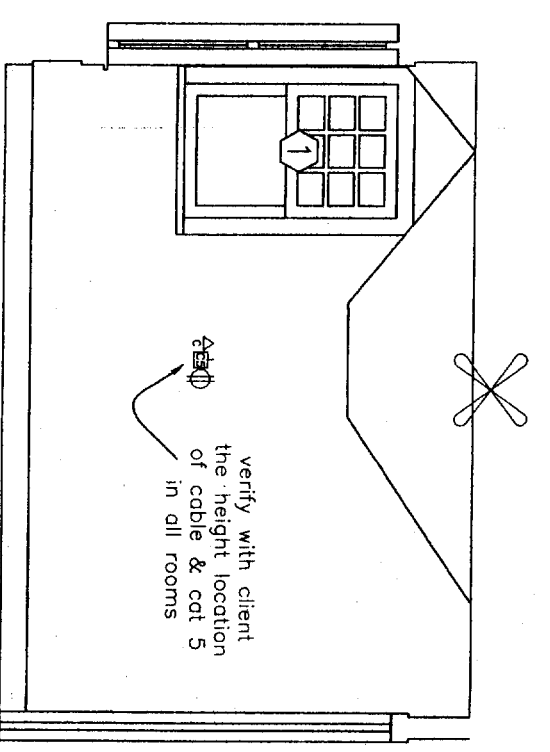
**interior elevations**



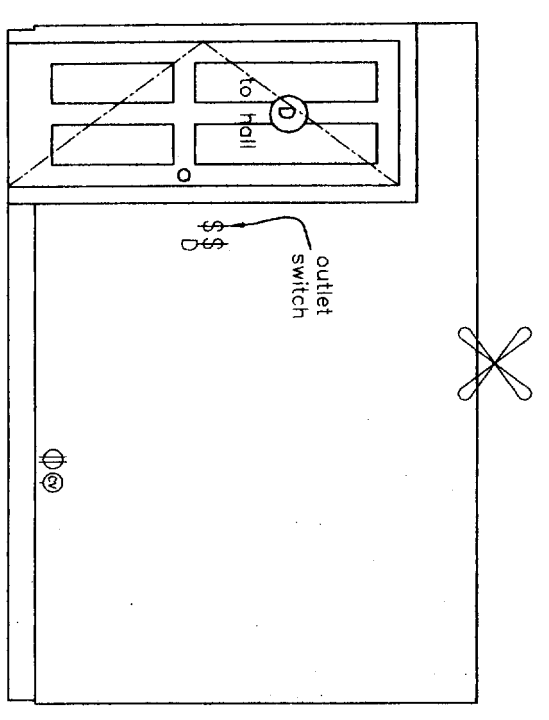
**A** Bedroom One East  
1/2" = 1'-0"



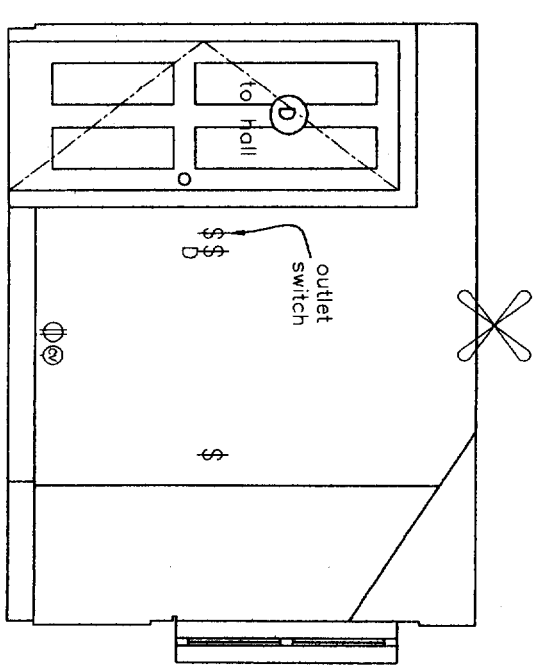
**B** Bedroom One South  
1/2" = 1'-0"



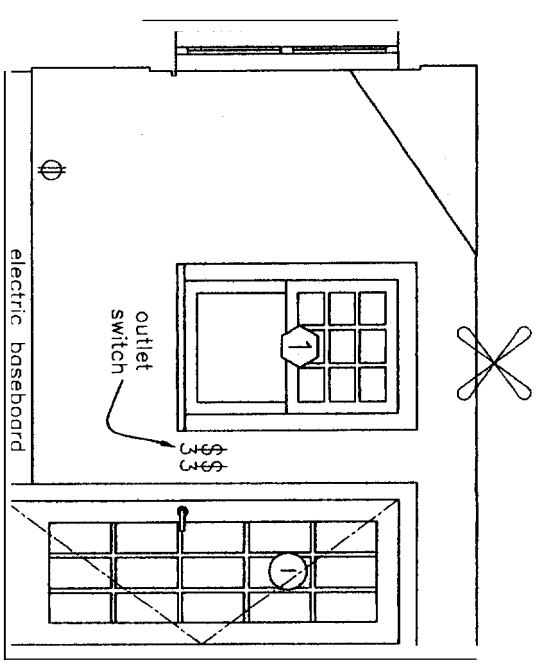
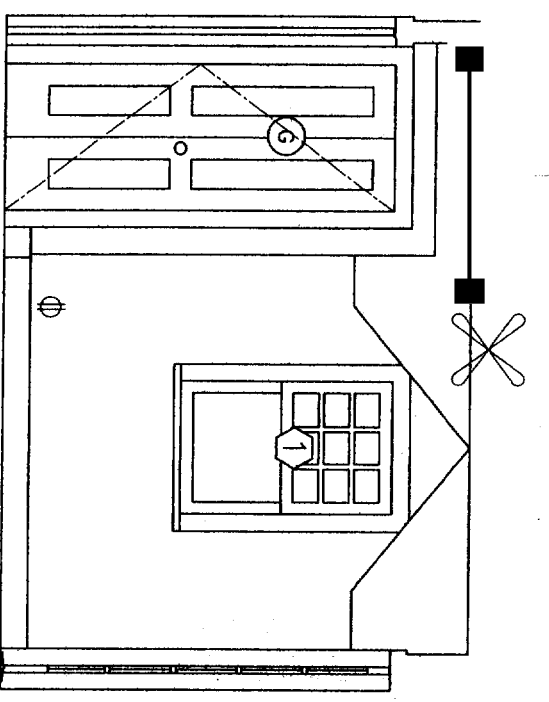
**C** Bedroom One West  
1/2" = 1'-0"



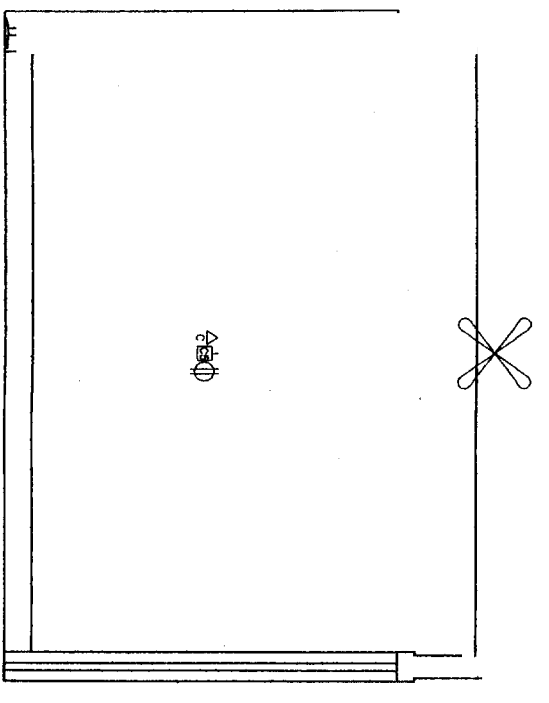
**D** Bedroom One North  
1/2" = 1'-0"



**F** Bedroom Two South  
1/2" = 1'-0"

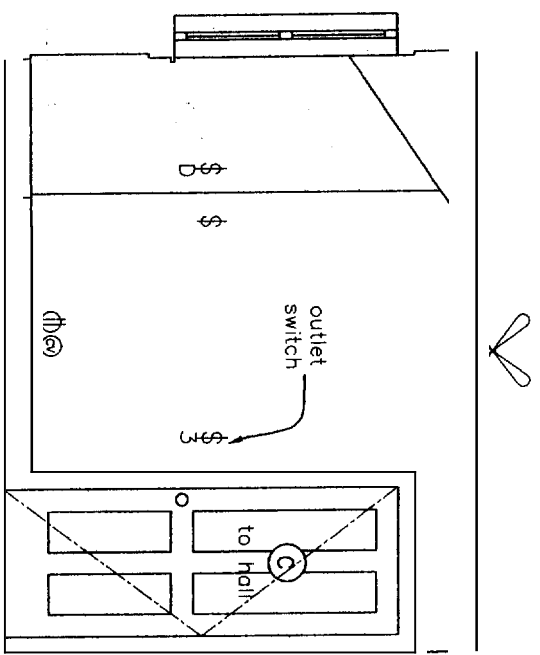


**G** Bedroom Two West  
1/2" = 1'-0"

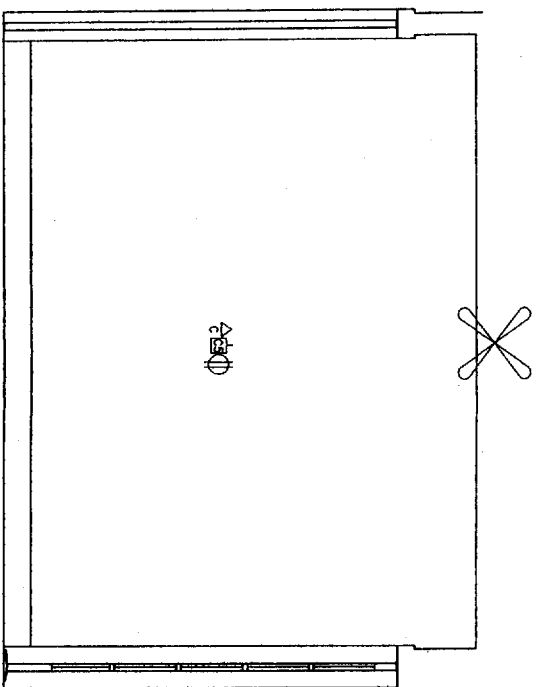


<b>PROJECT</b>		<b>Raymond Residence</b>	
DATE	6.17.06	REVISED	7.24.06
SCALE	1/2" = 1'-0"	DRAWN BY	Rachel
NOTES			

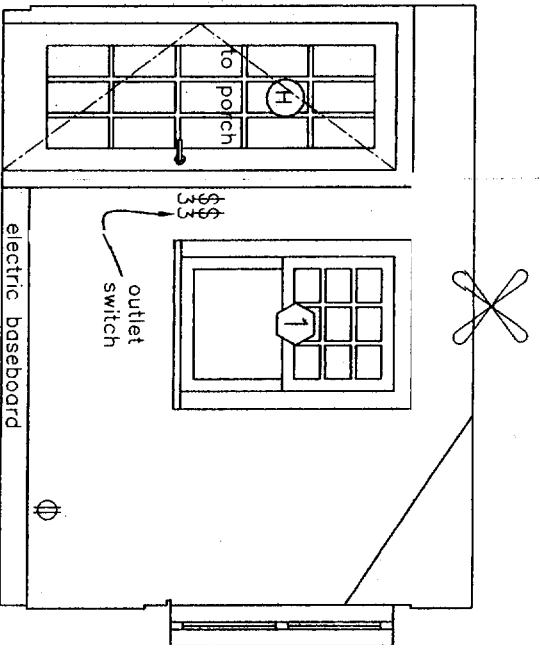
**interior elevations**



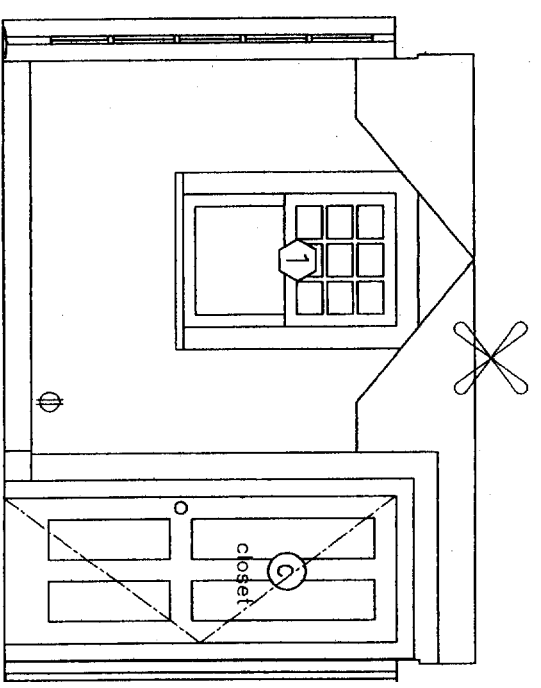
**A** Bedroom Three East  
1/2" = 1'-0"



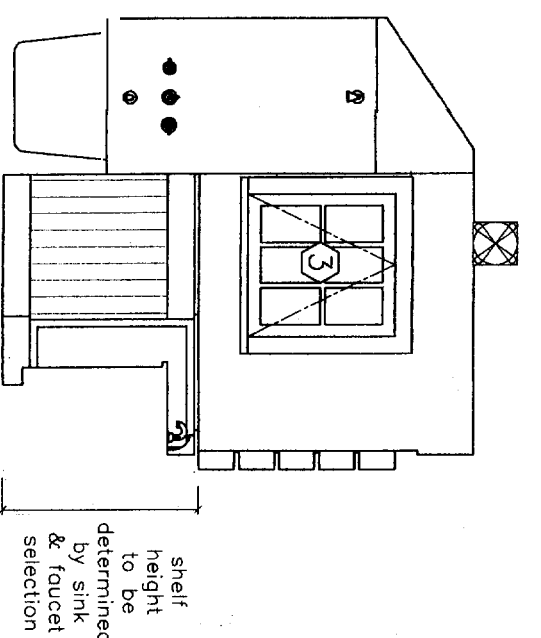
**B** Bedroom Three South  
1/2" = 1'-0"



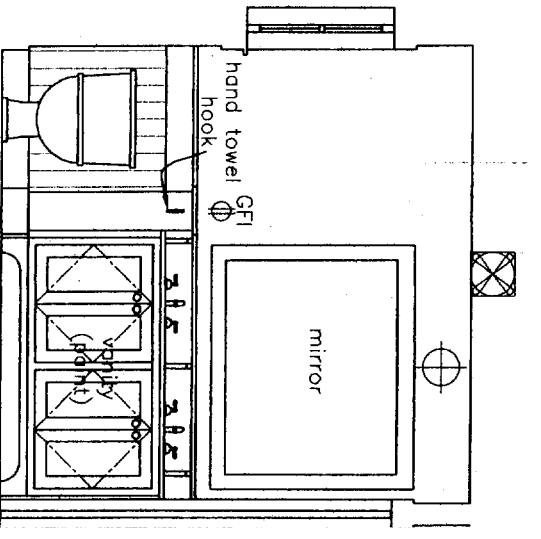
**C** Bedroom Three West  
1/2" = 1'-0"



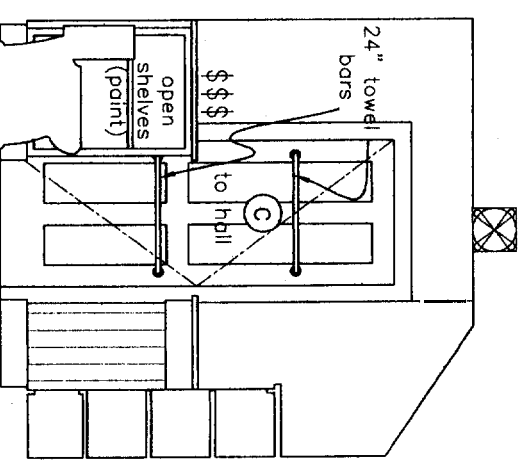
**D** Bedroom Three North  
1/2" = 1'-0"



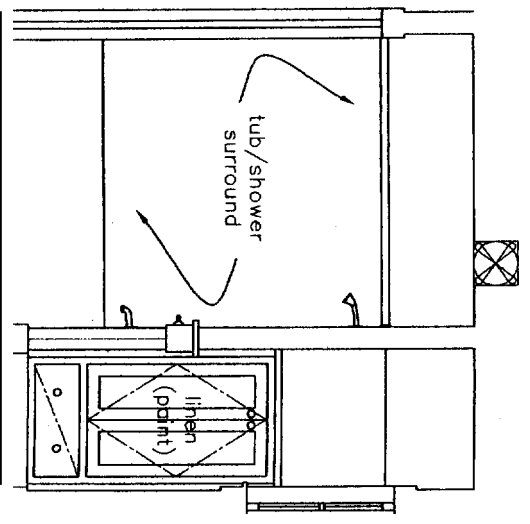
**E** Second Floor Bath East  
1/2" = 1'-0"



**F** Second Floor Bath South  
1/2" = 1'-0"



**G** Second Floor Bath West  
1/2" = 1'-0"



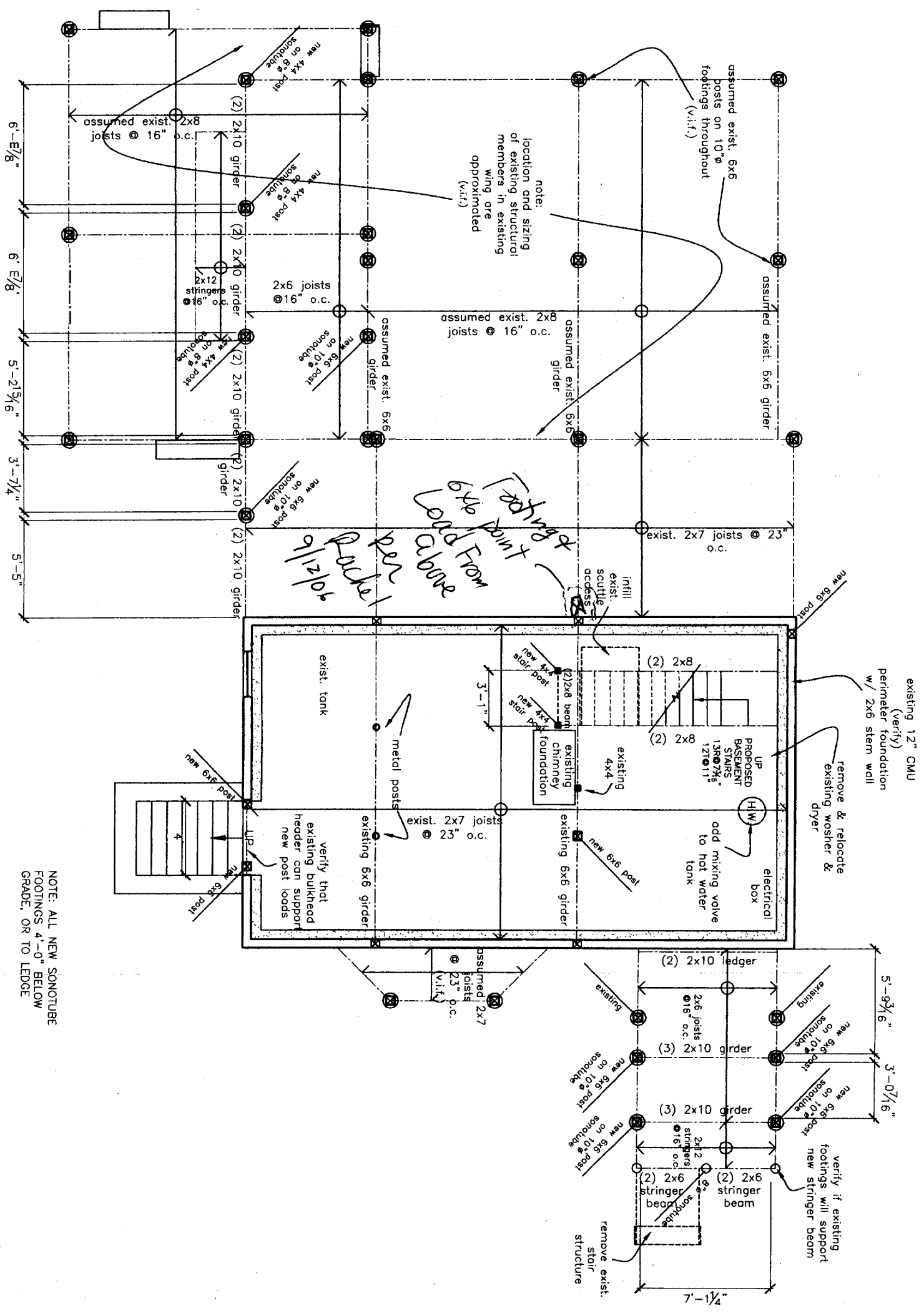
**H** Second Floor Bath North  
1/2" = 1'-0"

<b>PROJECT</b>	
<b>Raymond Residence</b>	
DATE	REVISION
6.17.06	7.24.06
SCALE	DRAWN BY
1/2" = 1'-0"	Rachel
NOTES	

**proposed:  
foundation/first floor  
framing plan**



PROJECT <b>Raymond Residence</b>	
DATE 6.17.06	REVISED 7.24.06
SCALE 1/4" = 1'-0"	DRAWN BY Rachel
NOTES	

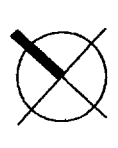


**A** Proposed First Floor Framing/Foundation Plan  
1/4" = 1'-0"

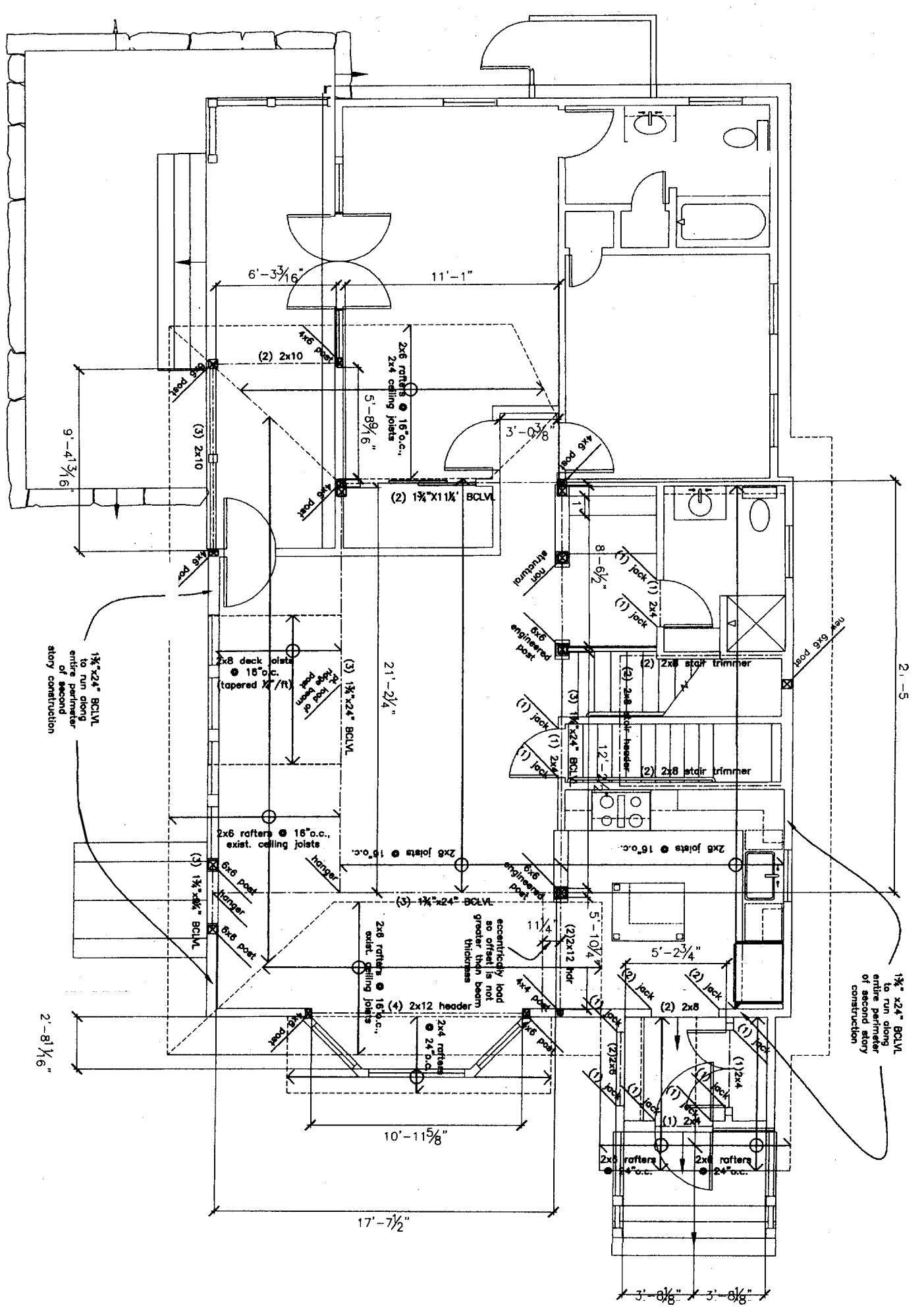
NOTE: ALL NEW SONOTUBE  
FOOTINGS 4'-0" BELOW  
GRADE, OR TO LEDGE



**Proposed:  
second floor framing  
plan**

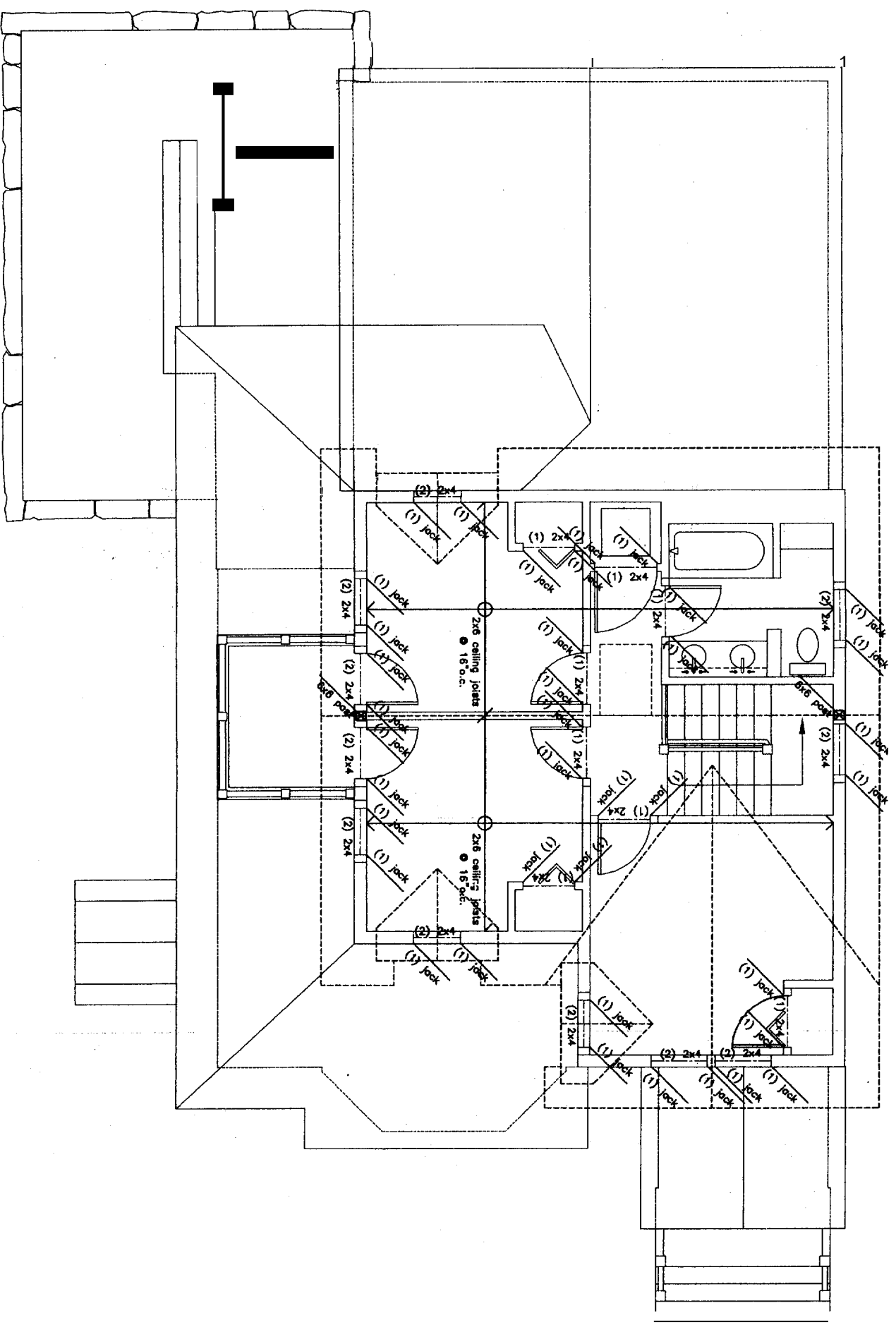


PROJECT <b>Raymond Residence</b>	
DATE 6.17.06	REVISED 7.24.06
SCALE 1/4"=1'-0"	DRAWN BY Rachel
NOTES	



**(A)** Proposed Second Floor Framing Plan  
1/4"=1'-0"

proposed:  
second floor framing  
plan



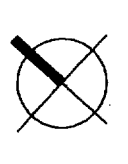
PROJECT	Raymond Residence
DATE	6.17.06
REVISION	7.24.06
SCALE	1/4" = 1'-0"
DRAWN BY	Rachel
NOTES	

(A) Proposed Second Floor Ceiling Framing Plan  
1/4" = 1'-0"

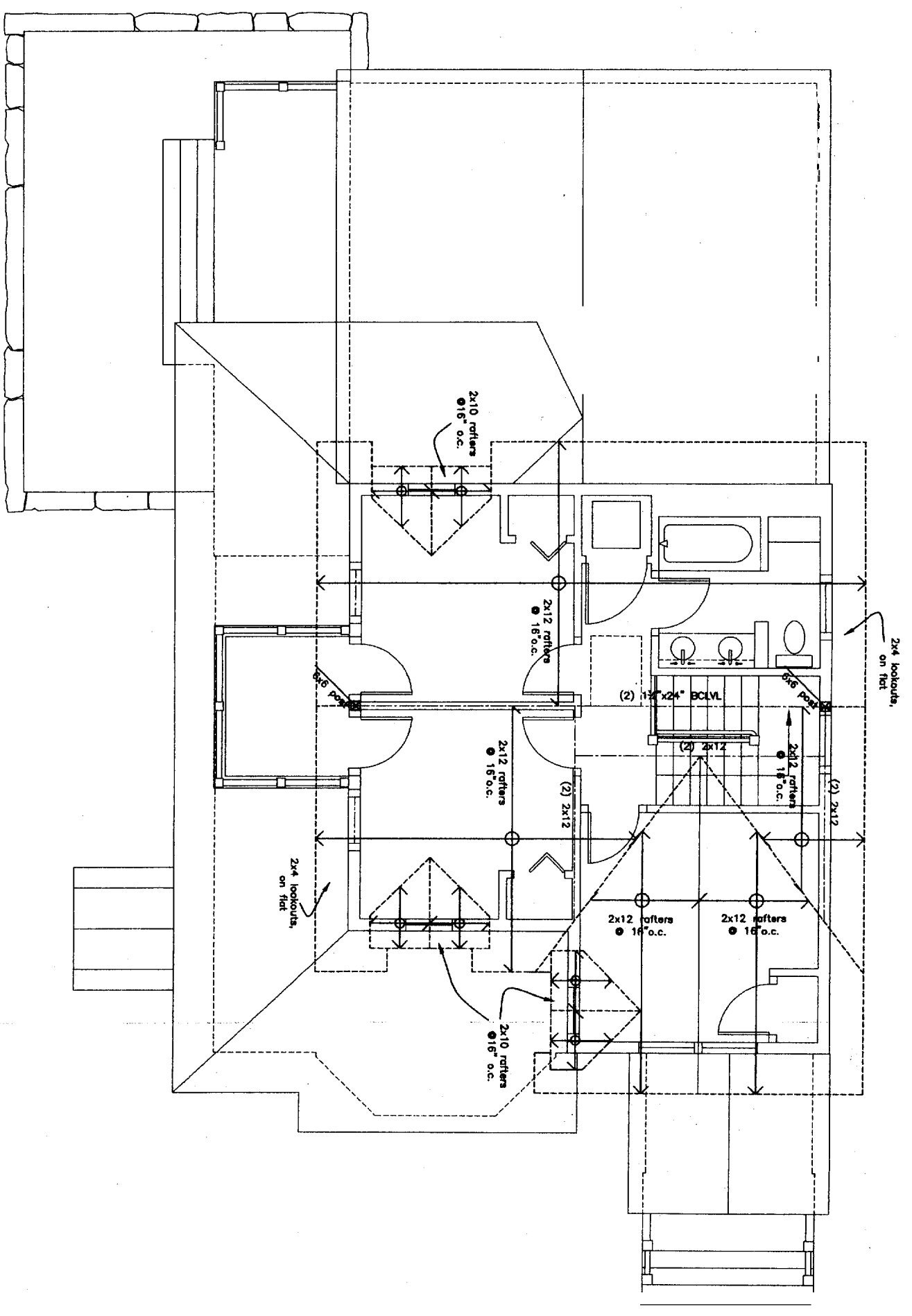
**Thompson Johnson  
Woodworks**

115 island avenue  
peaks island me 04108  
207.766.5919

proposed:  
roof framing plan

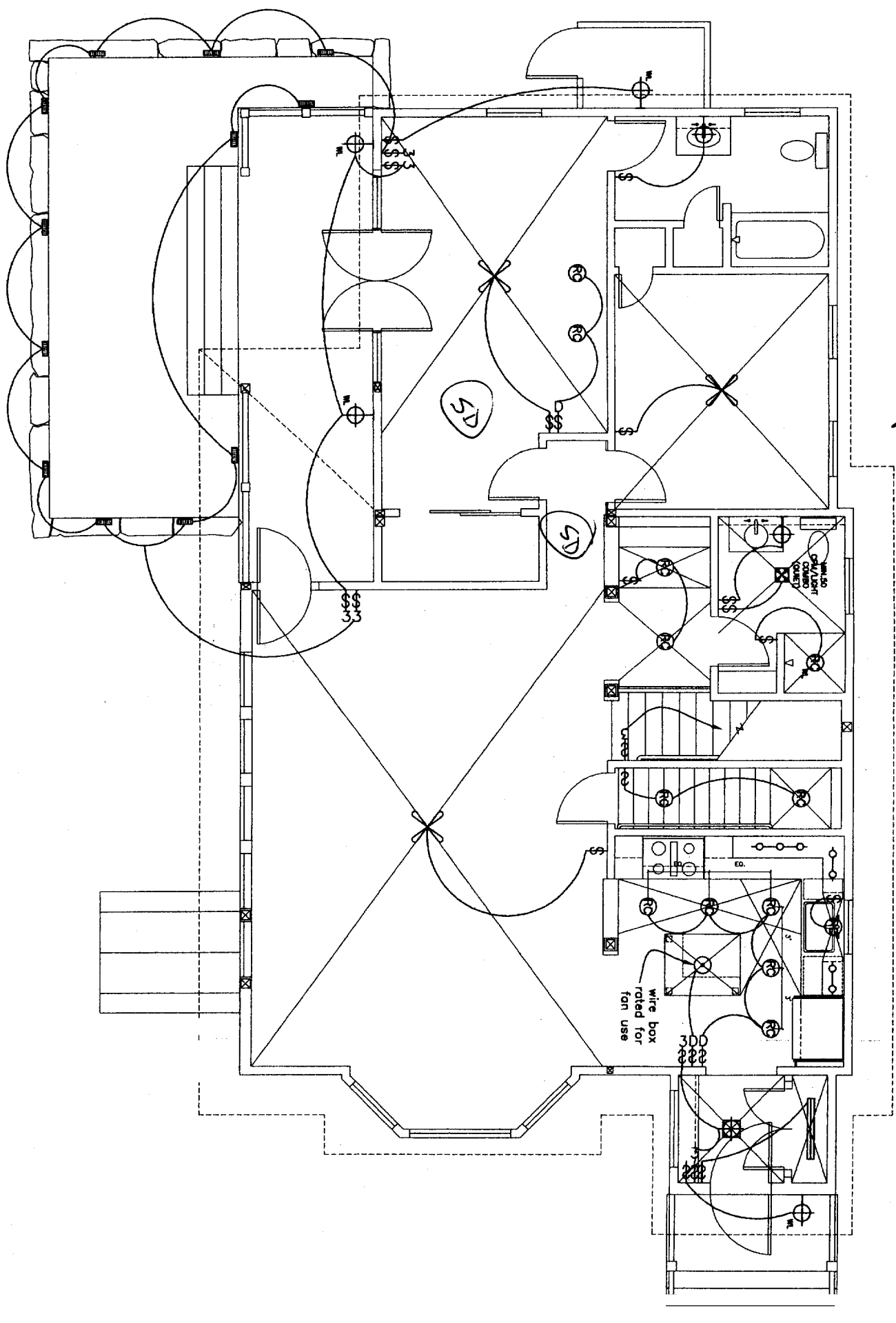


PROJECT <b>Raymond Residence</b>	
DATE 6.7.06	REVISED 7.24.06
SCALE 1/4" = 1'-0"	DRAWN BY Rachel
NOTES	



Ⓐ Proposed Roof Framing Plan  
1/4" = 1'-0"

per Rachel 9/12/06



A Proposed First Floor Lighting Plan  
1/4" = 1'-0"

proposed:  
first floor  
lighting plan



PROJECT  
**Raymond Residence**

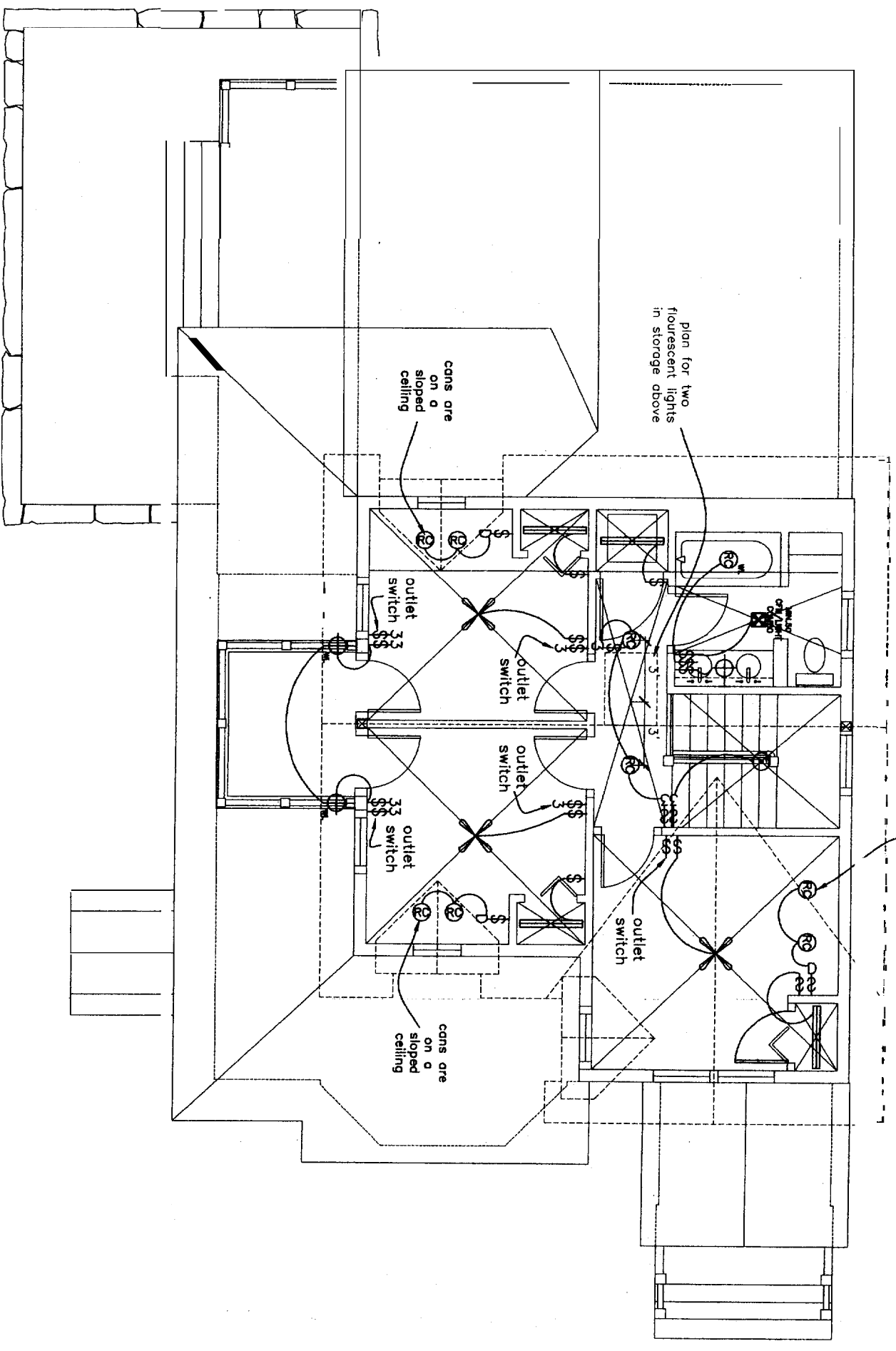
DATE 6.17.06 REVISED 7.24.06

SCALE 1/4" = 1'-0" DRAWN BY Rachel

NOTES

- ceiling light fixture
- wall sconce
- track lighting fixture
- recessed ceiling light fixture
- pendant light fixture
- outdoor light fixture
- floor lamp
- table lamp
- switch
- dimmer
- electrical outlet
- electrical panel
- fire alarm pull station
- fire alarm bell
- fire alarm horn
- fire alarm strobe
- fire alarm control unit
- fire alarm sounder
- fire alarm detector
- fire alarm notification appliance
- fire alarm control device
- fire alarm control circuit
- fire alarm control line
- fire alarm control panel
- fire alarm control unit
- fire alarm control device
- fire alarm control circuit
- fire alarm control line
- fire alarm control panel

**proposed:  
second floor  
lighting plan**



**(A)** Proposed Second Floor Lighting Plan  
1/4" = 1'-0"

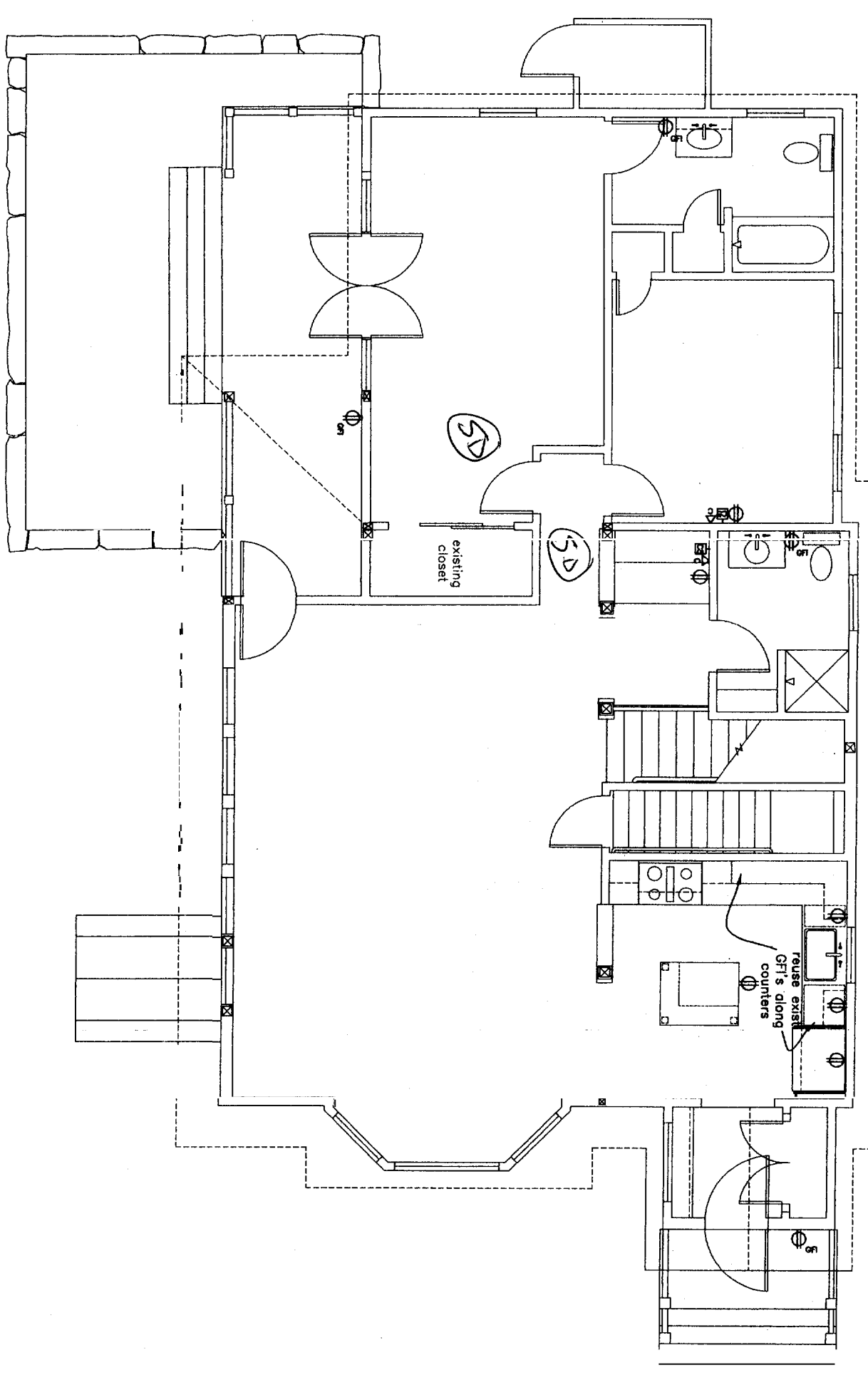


<b>PROJECT</b> Raymond Residence	
DATE 6.17.06	REVISED 7.24.06
SCALE 1/4" = 1'-0"	DRAWN BY Rachel
<b>NOTES</b>	
<ul style="list-style-type: none"> <li>○ 120</li> <li>○ 150</li> <li>○ 220</li> <li>○ 300</li> <li>○ 400</li> <li>○ 500</li> <li>○ 600</li> <li>○ 700</li> <li>○ 800</li> <li>○ 900</li> <li>○ 1000</li> <li>○ 1100</li> <li>○ 1200</li> <li>○ 1300</li> <li>○ 1400</li> <li>○ 1500</li> <li>○ 1600</li> <li>○ 1700</li> <li>○ 1800</li> <li>○ 1900</li> <li>○ 2000</li> <li>○ 2100</li> <li>○ 2200</li> <li>○ 2300</li> <li>○ 2400</li> <li>○ 2500</li> <li>○ 2600</li> <li>○ 2700</li> <li>○ 2800</li> <li>○ 2900</li> <li>○ 3000</li> <li>○ 3100</li> <li>○ 3200</li> <li>○ 3300</li> <li>○ 3400</li> <li>○ 3500</li> <li>○ 3600</li> <li>○ 3700</li> <li>○ 3800</li> <li>○ 3900</li> <li>○ 4000</li> <li>○ 4100</li> <li>○ 4200</li> <li>○ 4300</li> <li>○ 4400</li> <li>○ 4500</li> <li>○ 4600</li> <li>○ 4700</li> <li>○ 4800</li> <li>○ 4900</li> <li>○ 5000</li> <li>○ 5100</li> <li>○ 5200</li> <li>○ 5300</li> <li>○ 5400</li> <li>○ 5500</li> <li>○ 5600</li> <li>○ 5700</li> <li>○ 5800</li> <li>○ 5900</li> <li>○ 6000</li> <li>○ 6100</li> <li>○ 6200</li> <li>○ 6300</li> <li>○ 6400</li> <li>○ 6500</li> <li>○ 6600</li> <li>○ 6700</li> <li>○ 6800</li> <li>○ 6900</li> <li>○ 7000</li> <li>○ 7100</li> <li>○ 7200</li> <li>○ 7300</li> <li>○ 7400</li> <li>○ 7500</li> <li>○ 7600</li> <li>○ 7700</li> <li>○ 7800</li> <li>○ 7900</li> <li>○ 8000</li> <li>○ 8100</li> <li>○ 8200</li> <li>○ 8300</li> <li>○ 8400</li> <li>○ 8500</li> <li>○ 8600</li> <li>○ 8700</li> <li>○ 8800</li> <li>○ 8900</li> <li>○ 9000</li> <li>○ 9100</li> <li>○ 9200</li> <li>○ 9300</li> <li>○ 9400</li> <li>○ 9500</li> <li>○ 9600</li> <li>○ 9700</li> <li>○ 9800</li> <li>○ 9900</li> <li>○ 10000</li> </ul>	<ul style="list-style-type: none"> <li>○ 120</li> <li>○ 150</li> <li>○ 220</li> <li>○ 300</li> <li>○ 400</li> <li>○ 500</li> <li>○ 600</li> <li>○ 700</li> <li>○ 800</li> <li>○ 900</li> <li>○ 1000</li> <li>○ 1100</li> <li>○ 1200</li> <li>○ 1300</li> <li>○ 1400</li> <li>○ 1500</li> <li>○ 1600</li> <li>○ 1700</li> <li>○ 1800</li> <li>○ 1900</li> <li>○ 2000</li> <li>○ 2100</li> <li>○ 2200</li> <li>○ 2300</li> <li>○ 2400</li> <li>○ 2500</li> <li>○ 2600</li> <li>○ 2700</li> <li>○ 2800</li> <li>○ 2900</li> <li>○ 3000</li> <li>○ 3100</li> <li>○ 3200</li> <li>○ 3300</li> <li>○ 3400</li> <li>○ 3500</li> <li>○ 3600</li> <li>○ 3700</li> <li>○ 3800</li> <li>○ 3900</li> <li>○ 4000</li> <li>○ 4100</li> <li>○ 4200</li> <li>○ 4300</li> <li>○ 4400</li> <li>○ 4500</li> <li>○ 4600</li> <li>○ 4700</li> <li>○ 4800</li> <li>○ 4900</li> <li>○ 5000</li> <li>○ 5100</li> <li>○ 5200</li> <li>○ 5300</li> <li>○ 5400</li> <li>○ 5500</li> <li>○ 5600</li> <li>○ 5700</li> <li>○ 5800</li> <li>○ 5900</li> <li>○ 6000</li> <li>○ 6100</li> <li>○ 6200</li> <li>○ 6300</li> <li>○ 6400</li> <li>○ 6500</li> <li>○ 6600</li> <li>○ 6700</li> <li>○ 6800</li> <li>○ 6900</li> <li>○ 7000</li> <li>○ 7100</li> <li>○ 7200</li> <li>○ 7300</li> <li>○ 7400</li> <li>○ 7500</li> <li>○ 7600</li> <li>○ 7700</li> <li>○ 7800</li> <li>○ 7900</li> <li>○ 8000</li> <li>○ 8100</li> <li>○ 8200</li> <li>○ 8300</li> <li>○ 8400</li> <li>○ 8500</li> <li>○ 8600</li> <li>○ 8700</li> <li>○ 8800</li> <li>○ 8900</li> <li>○ 9000</li> <li>○ 9100</li> <li>○ 9200</li> <li>○ 9300</li> <li>○ 9400</li> <li>○ 9500</li> <li>○ 9600</li> <li>○ 9700</li> <li>○ 9800</li> <li>○ 9900</li> <li>○ 10000</li> </ul>

**Thompson Johnson  
Woodworks**

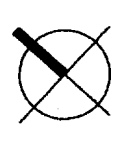
115 island avenue  
peaks island me 04108  
207.766.5919

*per Rachel  
9/12/06*



**A** Proposed First Floor Power Plan  
1/4" = 1'-0"

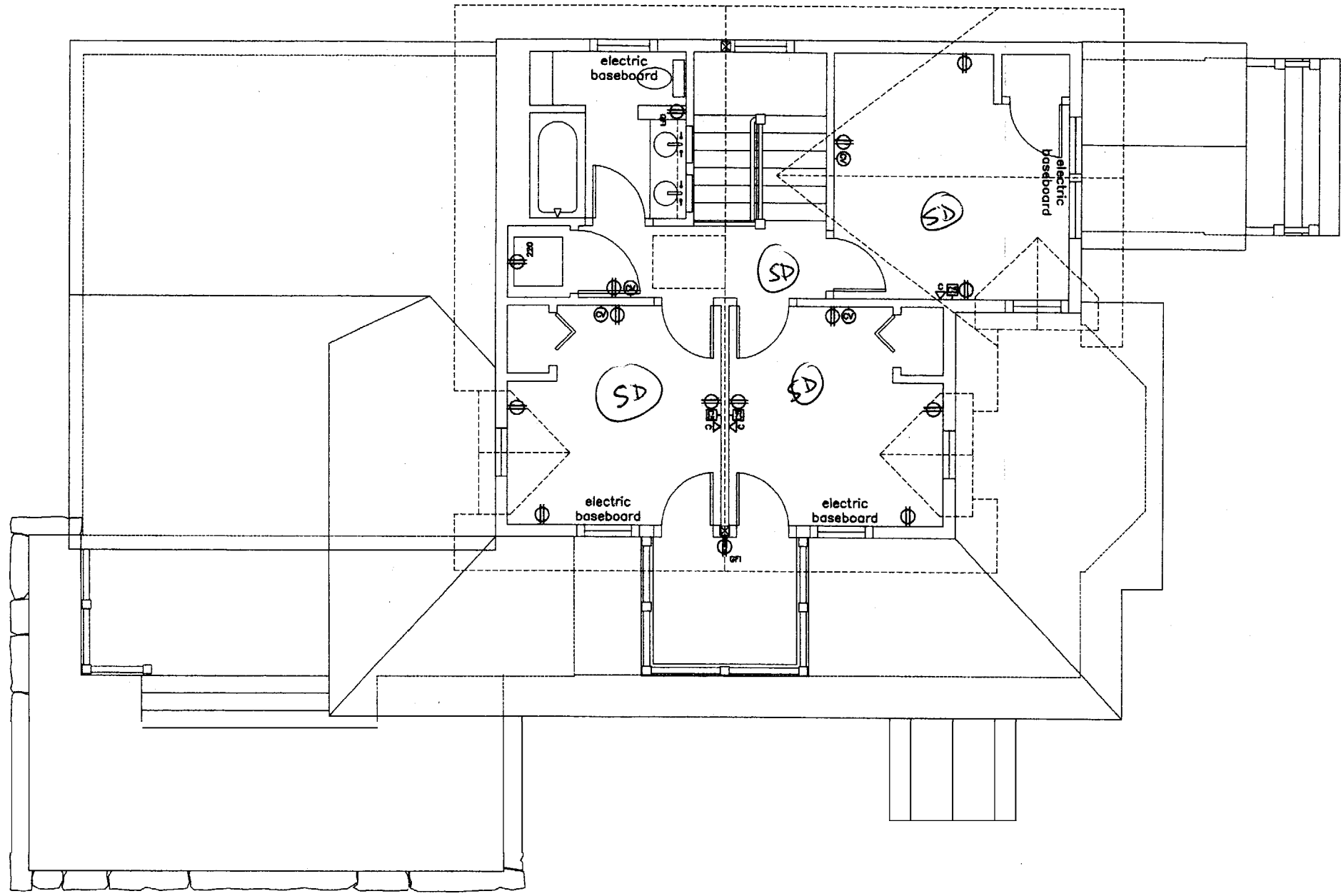
**proposed:  
first floor  
power plan**



<b>Raymond Residence</b>	
DATE 6.17.06	REVISED 7.24.06
SCALE 1/4" = 1'-0"	PROGRAM BY Rachel
NOTES	
	existing GFI
	proposed GFI
	existing outlet
	proposed outlet
	existing switch
	proposed switch
	existing door
	proposed door
	existing window
	proposed window
	existing wall
	proposed wall
	existing ceiling
	proposed ceiling
	existing floor
	proposed floor
	existing staircase
	proposed staircase
	existing railing
	proposed railing
	existing door swing
	proposed door swing
	existing window swing
	proposed window swing
	existing wall thickness
	proposed wall thickness
	existing ceiling height
	proposed ceiling height
	existing floor height
	proposed floor height
	existing staircase height
	proposed staircase height
	existing railing height
	proposed railing height

**E3**

per Rachel  
9/12/06



NOTE: ALL BEDROOM DUPLEX  
OUTLETS TO HAVE TOP WIRED  
FOR A SWITCH & BOTTOM HOT

(A) Proposed Second Floor Power Plan  
1/4"=1'-0"

**Thompson Johnson  
Woodworks**

115 island avenue  
peaks island me 04108  
207.766.5919

**proposed  
second floor  
power plan**



PROJECT  
**Raymond Residence**

DATE 6.17.06	REVISED 7.24.06
-----------------	--------------------

SCALE 1/4"=1'-0"	DRAWN BY <b>Rachel</b>
---------------------	---------------------------

NOTES

●	outlet	○	undermount
○	switch-outlet	⊗	switch for 1/2" ceiling light
⊗	GFI	⊗	switch for
⊗	220 volt	⊗	switch for
⊗	outlet	⊗	switch for
⊗	1-way outlet	⊗	switch for
⊗	2-way outlet	⊗	switch for
⊗	3-way outlet	⊗	switch for
⊗	4-way outlet	⊗	switch for
⊗	5-way outlet	⊗	switch for
⊗	6-way outlet	⊗	switch for
⊗	7-way outlet	⊗	switch for
⊗	8-way outlet	⊗	switch for
⊗	9-way outlet	⊗	switch for
⊗	10-way outlet	⊗	switch for
⊗	11-way outlet	⊗	switch for
⊗	12-way outlet	⊗	switch for
⊗	13-way outlet	⊗	switch for
⊗	14-way outlet	⊗	switch for
⊗	15-way outlet	⊗	switch for
⊗	16-way outlet	⊗	switch for
⊗	17-way outlet	⊗	switch for
⊗	18-way outlet	⊗	switch for
⊗	19-way outlet	⊗	switch for
⊗	20-way outlet	⊗	switch for

**E4**