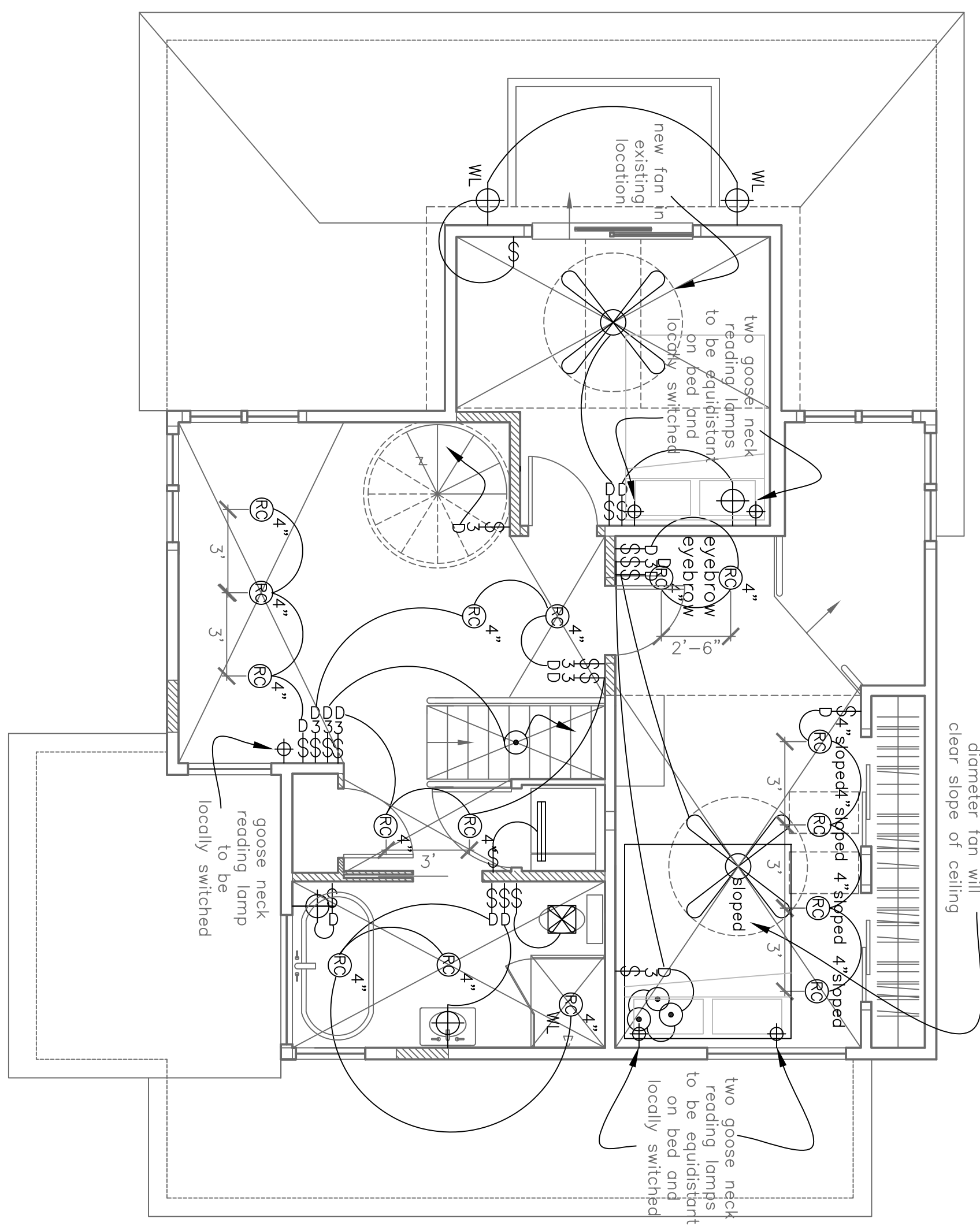


new fan in existing location, verify 60" diameter fan will clear slope of ceiling



NOTES:
1.) VERIFY LIGHTING PLACEMENT WITH KRISTI KAMPS AND CLIENT AFTER FRAMING

Rachel Conly
Architectural Design
26 Sterling Street
Peaks Island, Maine 04108
207.766.5625

Proposed Second Floor Lighting Plan

Branson Residence
5 Beach Road
Peaks Island, Me.
04108

DATE: 5.9.14
SCALE: 1/4" = 1'-0"
DRAWN BY: Rachel

NOTES

○—○	undercounter	○—○	central vacuum recessed on
⊕	duplex	⊕	recessed can light fixture
⊕	ground-fault circuit interrupter	⊕	wall sconce light fixture
⊕	GFI 220 volt	⊕	wet location wall sconce light fixture
⊕	switch	⊕	troat lighting
⊕	3-way switch	⊕	fluorescent, locally switched
⊕	dimmer switch	⊕	
⊕	smoke detector	⊕	
⊕	smoke detector	⊕	
⊕	minimum 50 dbm	⊕	
⊕	wet fan	⊕	
⊕	MIN:50 CFM	⊕	
⊕	ceiling mount light fixture	⊕	
⊕	recessed can light fixture	⊕	
⊕	wall sconce light fixture	⊕	
⊕	wet location wall sconce light fixture	⊕	
⊕	troat lighting	⊕	
⊕	fluorescent, locally switched	⊕	

A Proposed Second Floor Lighting Plan
1/4" = 1'-0"