

Rachel Conly
 Architectural Design

26 Sterling Street
 Peaks Island, Maine 04108
 207.766.5625

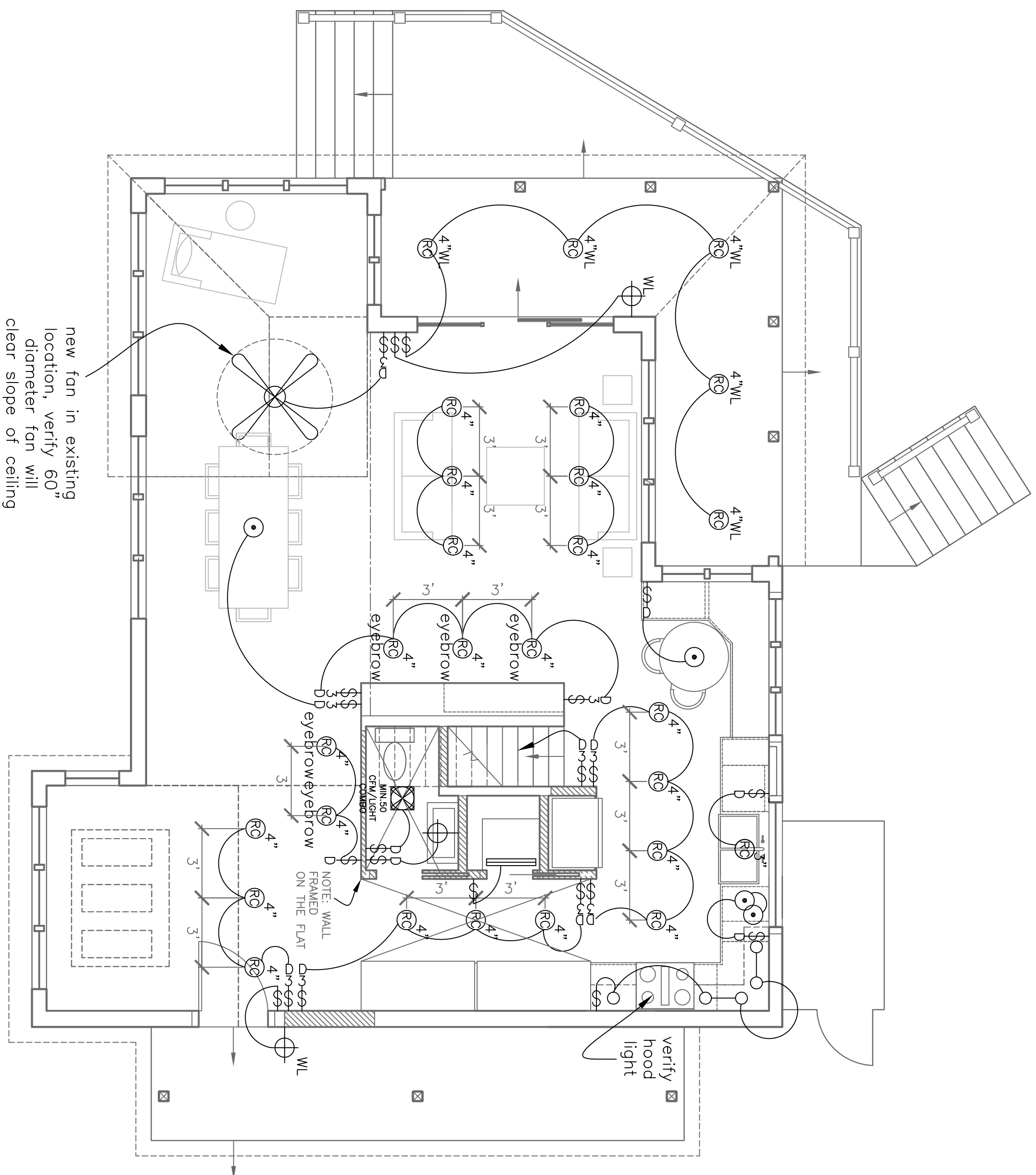
**Proposed First
 Floor Lighting Plan**

Branson Residence
 5 Beach Road
 Peaks Island, Me.
 04108

DATE 5.9.14 REVISIONS
 SCALE 1/4" = 1'-0"
 DRAWN BY Rachel

<ul style="list-style-type: none"> ○—○—○ undercounter ⊕ ground-fault circuit interrupter 220 volt ⊖ switch 3-way switch ⋄ dinner switch ⊡ smoke detector ⊠ smoke detector ⊞ minimum 50 dlm ⊚ CFM ⊕ ceiling mount light fixture ⊕ recessed can light fixture ⊕ wall sconce light fixture ⊕ wet location wall sconce light fixture ⊚ track lighting 	<ul style="list-style-type: none"> ⊙ duplex ⊖ GFI ⊖ 220 volt ⊖ switch ⋄ dinner switch ⊡ smoke detector ⊠ smoke detector ⊞ minimum 50 dlm ⊚ CFM ⊕ ceiling mount light fixture ⊕ recessed can light fixture ⊕ wall sconce light fixture ⊕ wet location wall sconce light fixture ⊚ track lighting
---	---

(A) Proposed First Floor Lighting Plan
 1/4" = 1'-0"



NOTES:
 1.) VERIFY LIGHTING PLACEMENT WITH KRISTI KAMPS AND CLIENT AFTER FRAMING