

Rachel Conly
Architectural Design

26 Sterling Street
Peaks Island, Maine 04108
207.766.5625

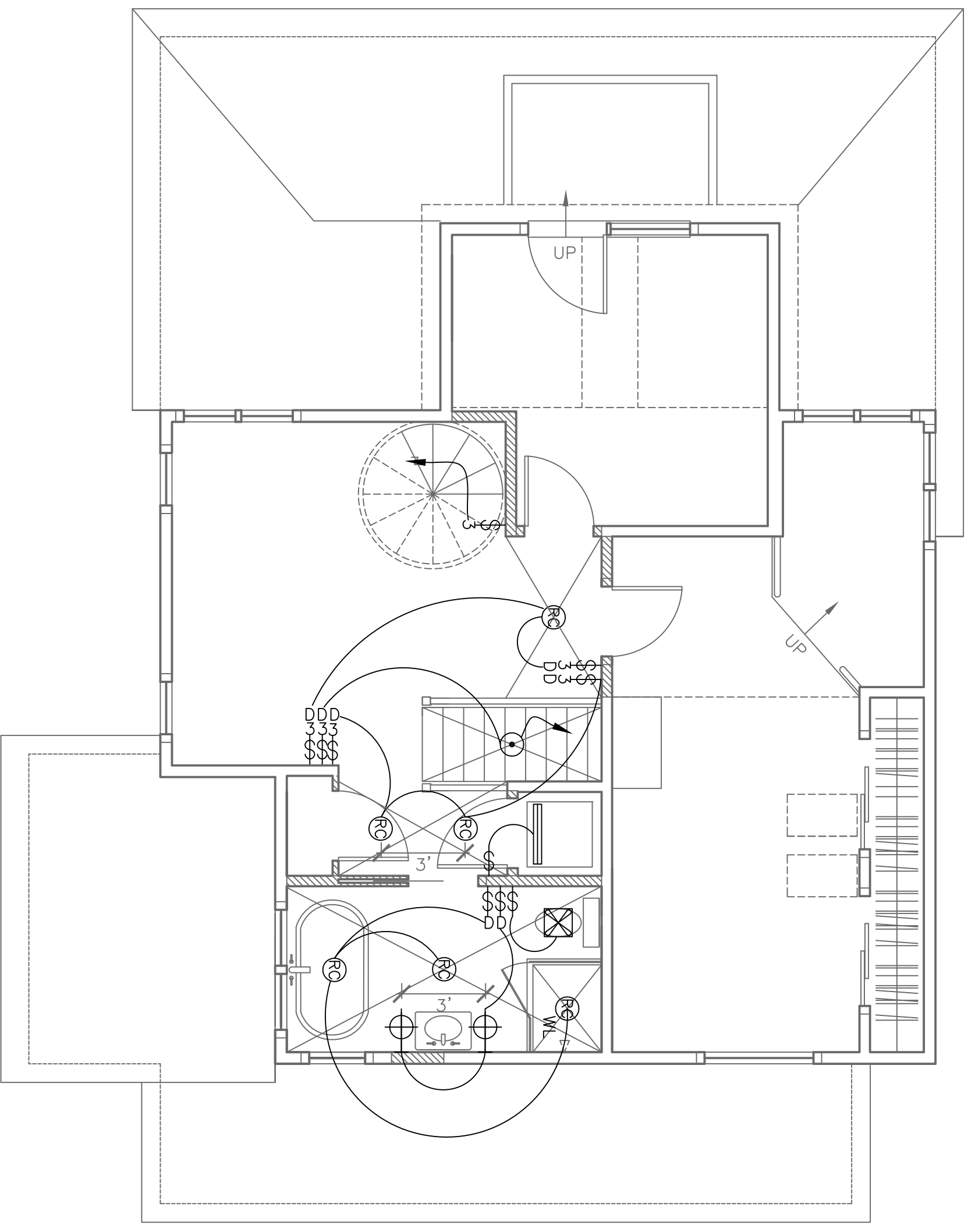
**Proposed Third
Floor Lighting Plan**

Branson Residence
5 Beach Road
Peaks Island, Me.
04108

DATE: 11.12.13
SCALE: 1/4" = 1'-0"
DRAWN BY: Rachel

NOTES

- ⊕ duplex
- ⊕ ground-fault circuit interrupter
- ⊕ 220 volt switch
- ⊕ 3-way switch
- ⊕ dimmer switch
- ⊕ smoke detector
- ⊕ smoke detector
- ⊕ minimum 50 dbm wet fan
- ⊕ MIN:50 CFM
- ⊕ ceiling mount light fixture
- ⊕ recessed can light fixture
- ⊕ wall sconce light fixture
- ⊕ wet location wall sconce light fixture
- ⊕ track lighting
- ⊕ floor-mounted roomy switch
- ⊕ undercounter
- ⊕ ceiling fan w/ integral light
- ⊕ ceiling fan
- ⊕ phone jack
- ⊕ DSL
- ⊕ CAT5E
- ⊕ CAT 5
- ⊕ central vacuum
- ⊕ compact fluorescent recessed can



A Proposed Second Floor Lighting Plan
1/4" = 1'-0"