

Rachel Conly
 Architectural Design
 26 Sterling Street
 Peaks Island, Maine 04108
 207.766.5625

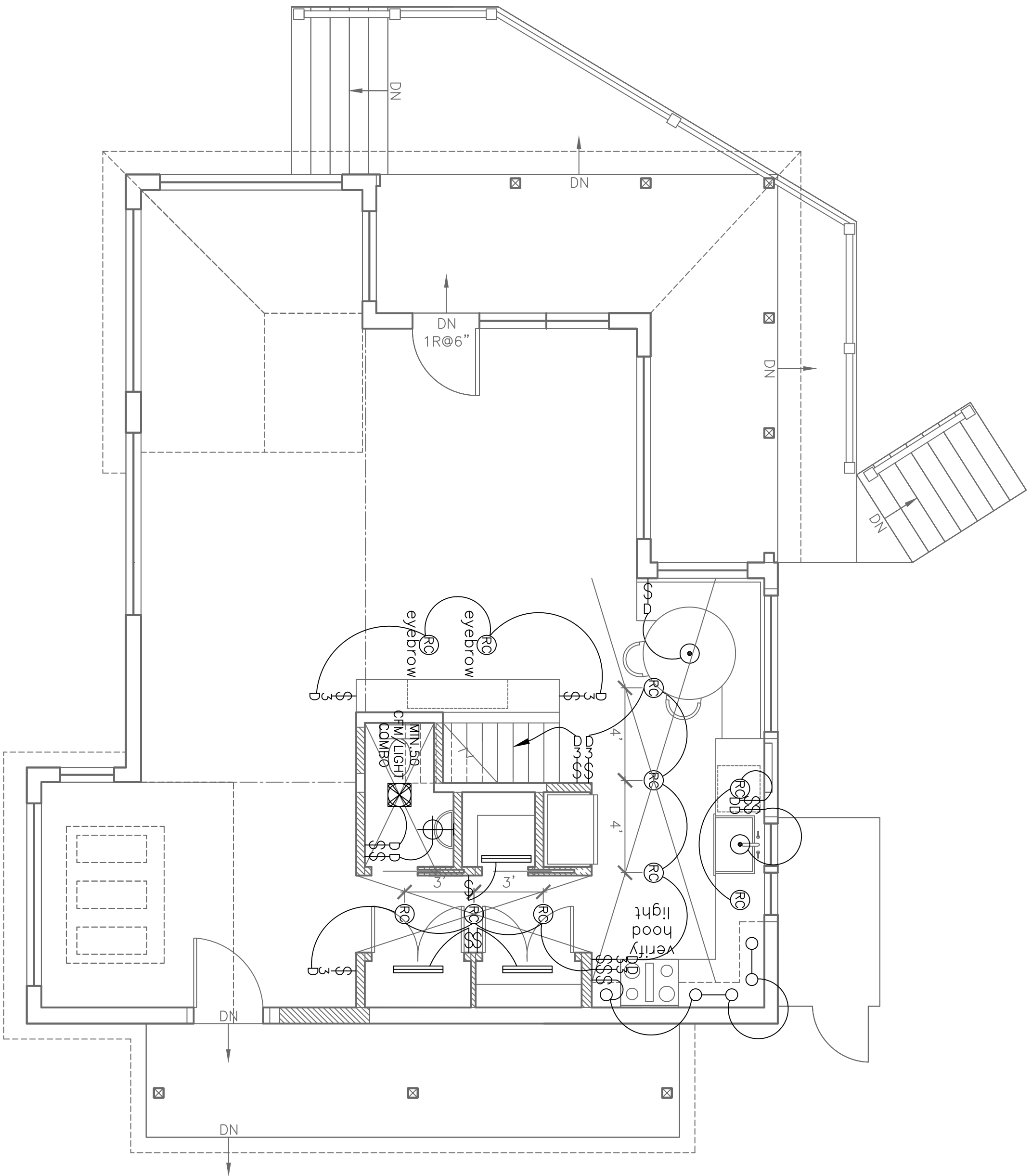
**Proposed First
 Floor Lighting Plan**

Branson Residence
 5 Beach Road
 Peaks Island, Me.
 04108

DATE 11.12.13 REVISED
 SCALE 1/4" = 1'-0" DRAWN BY Rachel

NOTES

- ⊕ duplex
- ⊕ ground-fault circuit interrupter
- ⊕ 220 volt
- ⊕ switch
- ⊕ 3-way switch
- ⊕ dimmer switch
- ⊕ smoke detector
- ⊕ smoke detector
- ⊕ minimum 50 dfm
- ⊕ wet fan
- ⊕ M/N:50 CFM
- ⊕ ceiling mount light fixture
- ⊕ recessed can light fixture
- ⊕ wall sconce light fixture
- ⊕ wet location wall sconce light fixture
- ⊕ track lighting
- ⊕ duplex
- ⊕ undercounter
- ⊕ ceiling fan w/ integral light
- ⊕ ceiling fan
- ⊕ phone jack
- ⊕ DSL
- ⊕ CAT5
- ⊕ central vacuum
- ⊕ compact fluorescent recessed can
- ⊕ recessed can light fixture
- ⊕ wall sconce light fixture
- ⊕ wet location wall sconce light fixture
- ⊕ track lighting
- ⊕ fluorescent
- ⊕ recessed can light fixture



A Proposed First Floor Lighting Plan
 1/4" = 1'-0"