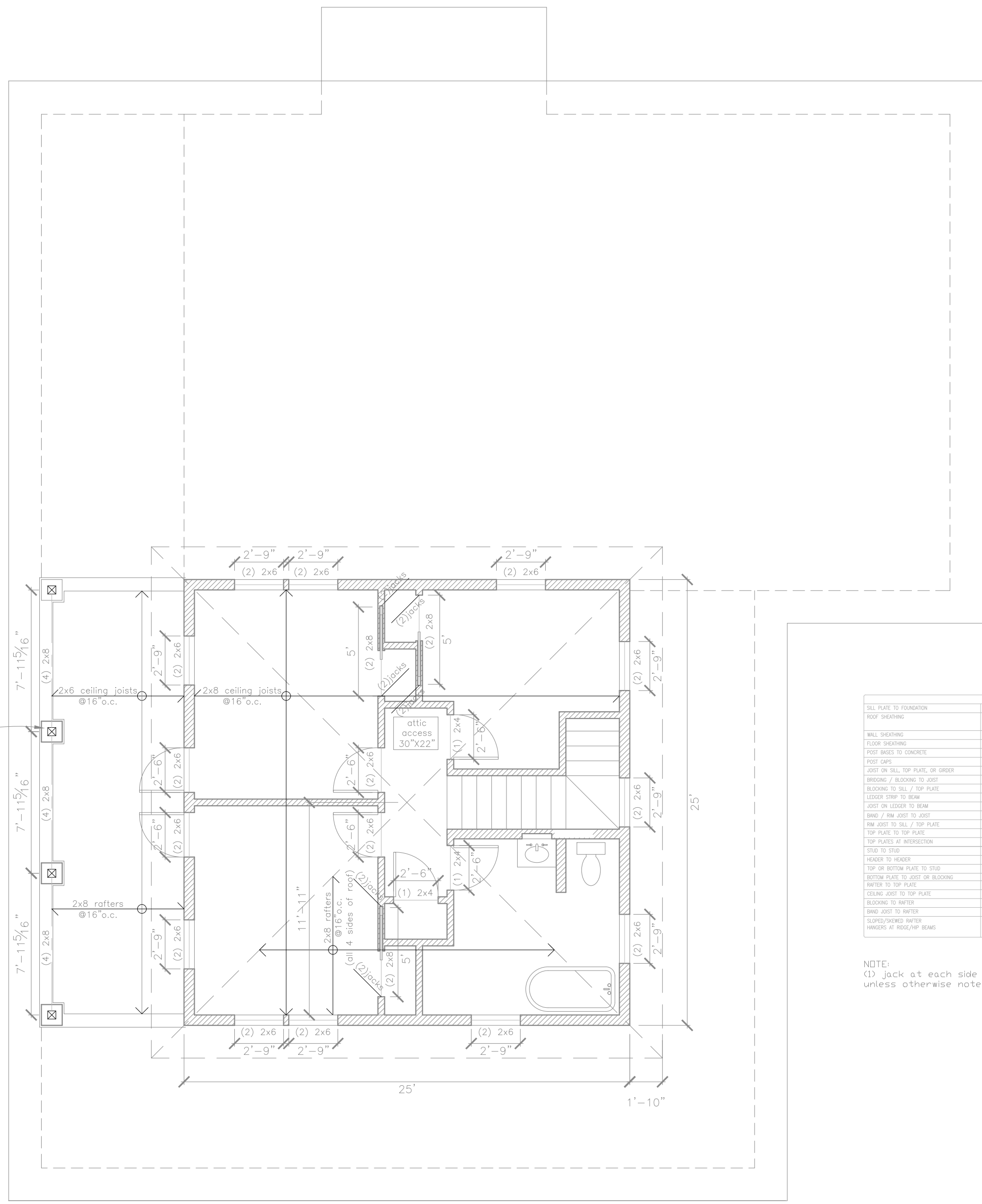


**Rachel Conly**  
Architectural Design

26 Sterling Street  
Peaks Island, Maine 04108  
207.766.5625

**Proposed  
Roof  
Framing Plan**

provide solid blocking in  
porch floor at location of  
each porch post



FASTENER SCHEDULE	
SILL PLATE TO FOUNDATION	1/2" ANCHOR BOLT @ 36" O.C. w/ 3" PLATE WIDERS, 8" MIN. EMBEDED
ROOF SHEATHING	1/4" @ 8" O.C. EDGE / 12" O.C. FIELD (TYPICAL PANELS)
WALL SHEATHING	5/8" @ 8" O.C. EDGE / 12" O.C. FIELD (PERIMETER PANELS)
FLOOR SHEATHING	1/2" @ 8" O.C. EDGE / 12" O.C. FIELD (PERIMETER PANELS)
POST BRACES TO CONCRETE	1/2" @ 8" O.C. EDGE / 12" O.C. FIELD
POST CAPS	SIMPSON BC OR LC (MATCH POST SIZE)
JOIST ON SILL, TOP PLATE, OR GRIER	SIMPSON LUS HANGER OR 4 - 86 (TODAY) WHEN JOIST BEAMS ON SUPPORT
BLOOMING / BLOOMING TO JOIST	2 - 86 (TODAY)
BLOOMING TO SILL / TOP PLATE	3 - 166 (TODAY)
LEADER STRIP TO BEAM	3 - 166 (TODAY)
JOIST ON LEADER TO BEAM	3 - 86 (TODAY)
BAND / RM JOIST TO JOIST	3 - 166 (TODAY)
RM JOIST TO SILL / TOP PLATE	2 - 166 PER FOOT
TOP PLATE TO TOP PLATE	2 - 166 PER FOOT
TOP PLATE AT INTERSECTION	4 - 166 EACH SIDE
STRIP TO STUD	1 - 166 @ 12" O.C.
HEADER TO HEADER	166 @ 8" O.C. ALONG EDGES
TOP OR BOTTOM PLATE TO STUD	2 - 166
BOTTOM PLATE TO JOIST OR BLOOMING	2 - 166 PER FOOT
WATER TO TOP PLATE	SIMPSON HT HURRICANE TI
CYLING JOIST TO TOP PLATE	2 - 86 (TODAY)
BLOOMING TO WATER	2 - 86 EACH END
BAND JOIST TO WATER	2 - 166 EACH END
SLOPED/SKEWED WATER	SIMPSON LSW
WIDERS AT ROOF/PAR BEAMS	

NOTE:  
(1) Jack at each side of each door/window header,  
unless otherwise noted



**A** Proposed Roof Framing  
3/16" = 1'-0"

PROJECT

**Arnold Residence**  
398 Island Ave.  
Peaks Island, ME

DATE  
06.02.14

REVISED

SCALE  
3/16" = 1'-0"

DRAWN BY  
**Rachel &  
Harvey**

NOTES

**S3**