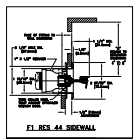
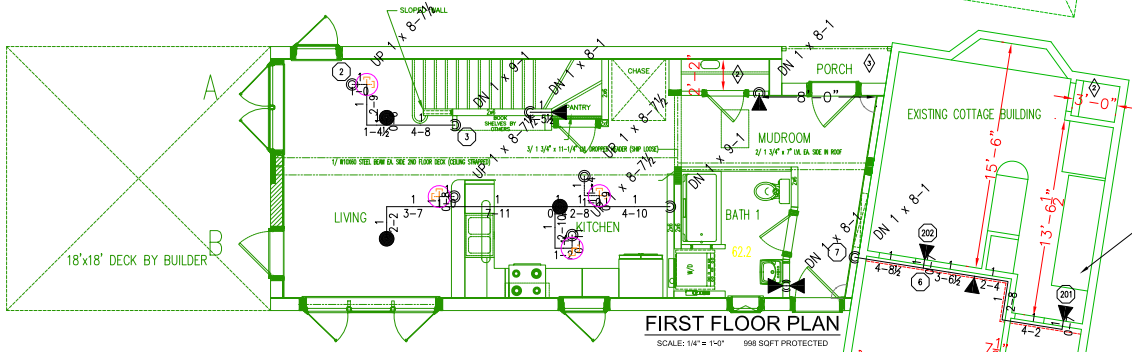
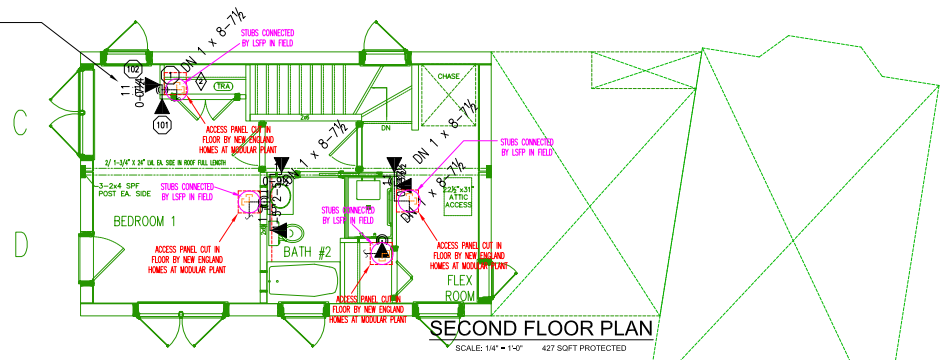


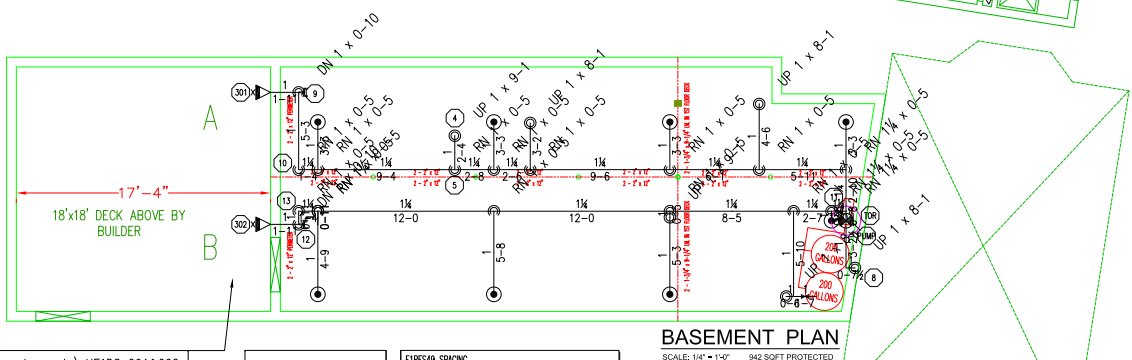
AREA 1 (TEST) HEADS 101&102  
 FLOW REQUIRED: 32.1 GPM  
 PRESSURE REQUIRED AT PUMP: 41.3 PSI  
 16'-0" x 16'-0" SPACING



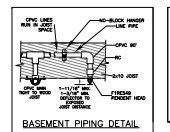
GENERAL SPACING  
 16' x 16' MAXIMUM SPACING  
 16'-0" MAXIMUM BETWEEN SIDEWALLS  
 8'-0" MINIMUM BETWEEN SIDEWALLS  
 8'-0" MAX FROM LATERAL WALLS  
 16'-0" MAX FROM OPPOSITE WALLS



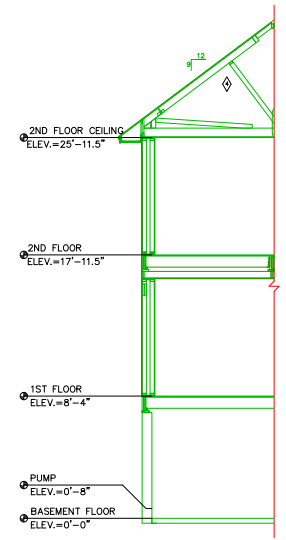
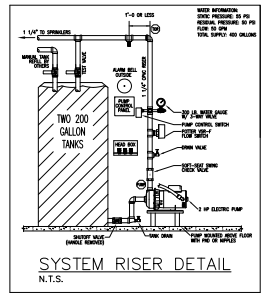
AREA 2 (TEST) HEADS 201&202  
 FLOW REQUIRED: 32.9 GPM  
 PRESSURE REQUIRED AT PUMP: 30.1 PSI  
 16'-0" x 16'-0" SPACING



AREA 3 (most remote) HEADS 201&202  
 FLOW REQUIRED: 38.2 GPM  
 PRESSURE REQUIRED AT PUMP: 27.2 PSI  
 16'-0" x 18'-0" SPACING



FLOOR/SPACING  
 EXPOSED CPVC BASEMENT WITH WOOD FLOOR JOISTS  
 14' x 16' MAXIMUM SPACING  
 14'-0" MAXIMUM BETWEEN PENDENTS ACROSS WOOD JOISTS  
 16'-0" MAXIMUM BETWEEN PENDENTS ALONG WOOD JOISTS  
 8'-0" MINIMUM BETWEEN PENDENTS  
 7'-0" MAXIMUM AWAY FROM WALLS ACROSS WOOD JOISTS  
 8'-0" MAXIMUM AWAY FROM WALLS ALONG WOOD JOISTS



HEAD	TYPE	TEMP	NPT	ISN	MFG.	MODEL
101	SP	155	4.4	1/2"	R3331	RELIABLE FIRE344
102	SP	155	4.4	1/2"	R3331	RELIABLE FIRE344
201	SP	155	4.9	1/2"	R3318	RELIABLE FIRE344
202	SP	155	4.9	1/2"	R3318	RELIABLE FIRE344
301	SP	155	4.4	1/2"	R3331	RELIABLE FIRE344
302	SP	155	4.4	1/2"	R3331	RELIABLE FIRE344

T.R. ARNOLD & ASSOCIATES, INC., 471 Center St., Ellsworth, ME 04829  
 (State) **MAINE**  
 Accredited Evaluation and Inspection Agency  
 This document is certified as being in conformance with applicable state laws.  
 AUG 8, 2017  
 Approved By: *Kurt S. White*  
 Approval of this document, plan or specification is subject to any conditions or deviations that may be required by applicable state laws.  
 THIS APPROVAL IS LIMITED TO FACTORY-BUILT MODULES ONLY.

- GENERAL NOTES:
- OWNER TO PROVIDE SUFFICIENT HEAT TO PREVENT WATER-FILLED SPRINKLER PIPING FROM FREEZING
  - OWNER TO MAINTAIN SYSTEM TO NFPA 13D STANDARDS / LOCAL ORDINANCES
  - HANGERS AND SUPPORTS TO BE INSTALLED PER NFPA 13D AND MANUFACTURERS INSTALLATION RECOMMENDATIONS
  - FLOW SWITCH TO BE WIRED TO LOCAL ALARM BELL OR SMOKE DETECTORS BY OTHERS
  - ELECTRIC PUMP, PANEL, SWITCHES AND BELL TO BE WIRED BY OTHERS
  - BUILDING IS OF COMBUSTIBLE MODULAR CONSTRUCTION
  - PLAN IS SUBJECT TO MINOR DEVIATIONS DUE TO SITE CONDITIONS AND/OR TRADE COORDINATION. DEVIATIONS SHALL NOT AFFECT SCOPE OF WORK OR CODE COMPLIANCE.

KEYED NOTES

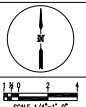
- SPRINKLERS ARE NOT REQUIRED IN BATHROOMS UNDER 55 FT<sup>2</sup> PER NFPA 13D:8.2.2
- SPRINKLERS ARE NOT REQUIRED IN CLOSETS AND PANTRIES PER THE CONDITIONS OF NFPA 13D:8.3.3
- SPRINKLERS ARE NOT REQUIRED IN GARAGES AND PORCHES PER NFPA 13D:8.4
- SPRINKLERS ARE NOT REQUIRED IN ATTICS PER THE CONDITIONS OF NFPA 13D:8.5

DESIGN CRITERIA:

WORKMANSHIP, MATERIAL, AND DESIGN SHALL CONFORM TO NFPA 13D STANDARDS (2013 ED.) AND LOCAL REGULATIONS  
 PIPE SIZED BY HYDRAULIC CALCULATIONS AS PER NFPA 13D

MATERIAL:

UNLESS NOTED OTHERWISE  
 PIPING: BLAZEMASTER CPVC  
 FITTINGS: BLAZEMASTER CPVC



SYMBOL	DESCRIPTION
○	MANUAL EXTINGUISHING POINT
○	HEAD LOCATION
—	PIPE RISE/DROP
—	CENTER OF PIPE ABOVE FLOOR (R-)
—	CENTER OF PIPE FROM BOTTOM OF DECK (D)
—	EXISTING PIPE TO REMAIN
—	NEW PIPE INSTALLATION
—	CEILING HEIGHT

SPRINKLER INFORMATION						
TOTAL HEADS THIS JOB: 28	ISN	TEMP	NPT	ISN	MFG.	MODEL
15	SP	155	4.4	1/2"	R3331	RELIABLE FIRE344
10	SP	155	4.9	1/2"	R3318	RELIABLE FIRE344
3	SP	155	4.9	1/2"	R3016	RELIABLE RPT49
2	SP	155	4.4	1/2"	R3231	RELIABLE FIRE344

ISLAND AVE 374		
PEAKS ISLAND PORTLAND, ME		
CONTRACT WITH LINDA CAPONE-NEWTON		
NO.	DATE	DESCRIPTION

SCALE: 1/4"=1'-0"  
 DRAWN BY: CJT  
 DATE: 07/07/17  
 JOB NUMBER: 17077  
 SHEET NUMBER: F1 of 1