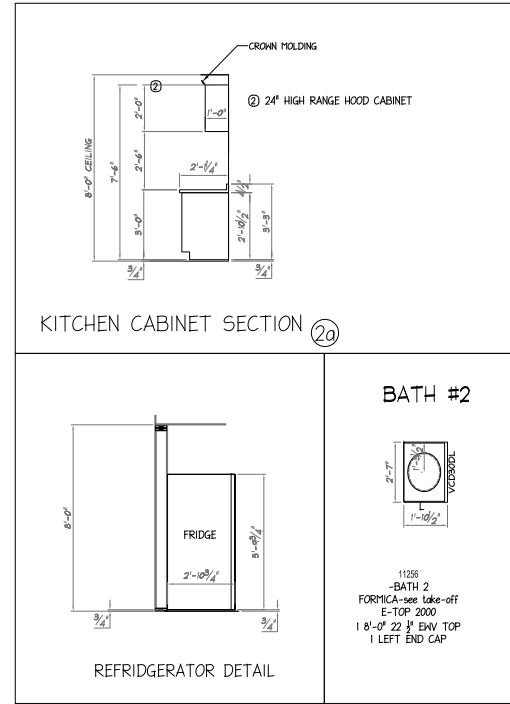


KITCHEN DETAIL - 1/2" = 1'-0"



T.R. ARNOLD & ASSOCIATES, INC. 4700 Chester Dr., Westbrook, ME 04092
 MAINE
 Accredited Evaluation and Inspection Agency
 This document is certified as being in conformance
 with LISTED CODES
 Approved By: *Kenneth White*
 Aug 8, 2017
 Approval of this document does not constitute or approve any omission or deviation from the requirements of applicable State Laws.
 THIS APPROVAL LIMITED TO FACTORY-BUILT MODELS ONLY.

NOTE: NEH & ALL materials shipped herein for the sole completion of the manufactured product is ULTIMATELY the SOLE RESPONSIBILITY OF THE FABRICATOR WHOSE TO BEHOLD AND RISK.

11256	Revisions	RTA	RTA	RTA	RTA	RTA	RTA	RTA	RTA
		RTA	RTA	RTA	RTA	RTA	RTA	RTA	RTA
A-12	Sheet	3/16" x 11'-0"		COLONIAL		KITCHEN DETAILS		CMH, INC Shelburne, VT 3/16" x 11'-0"	
		277 Locust Street, Suite B Dover, NH 03820 www.newenglandhomes.net (603)603.6881 (603)603.4515/640		New England Homes		CMH, INC Shelburne, VT		COLONIAL	

Permit Plans
 I HAVE REVIEWED THESE PLANS FOR ACCURACY AND HEREBY AUTHORIZE N.E.H. TO DO THE FOLLOWING:
 THERE ARE NO CHANGES TO THIS PLAN, RELEASE THE JOB FOR PRODUCTION.
 REVISE THE PLANS AS NOTED AND RELEASE THESE PLANS FOR PRODUCTION.
 REVISE THESE PLANS AS NOTED AND SEND THE ANOTHER SET OF PERMIT PLANS TO REVIEW.
 Signature _____ Date _____
 NEW ENGLAND HOMES INDEPENDENT BUILDERS DULY AUTHORIZED AGENT PER CONTRACT AGREEMENT