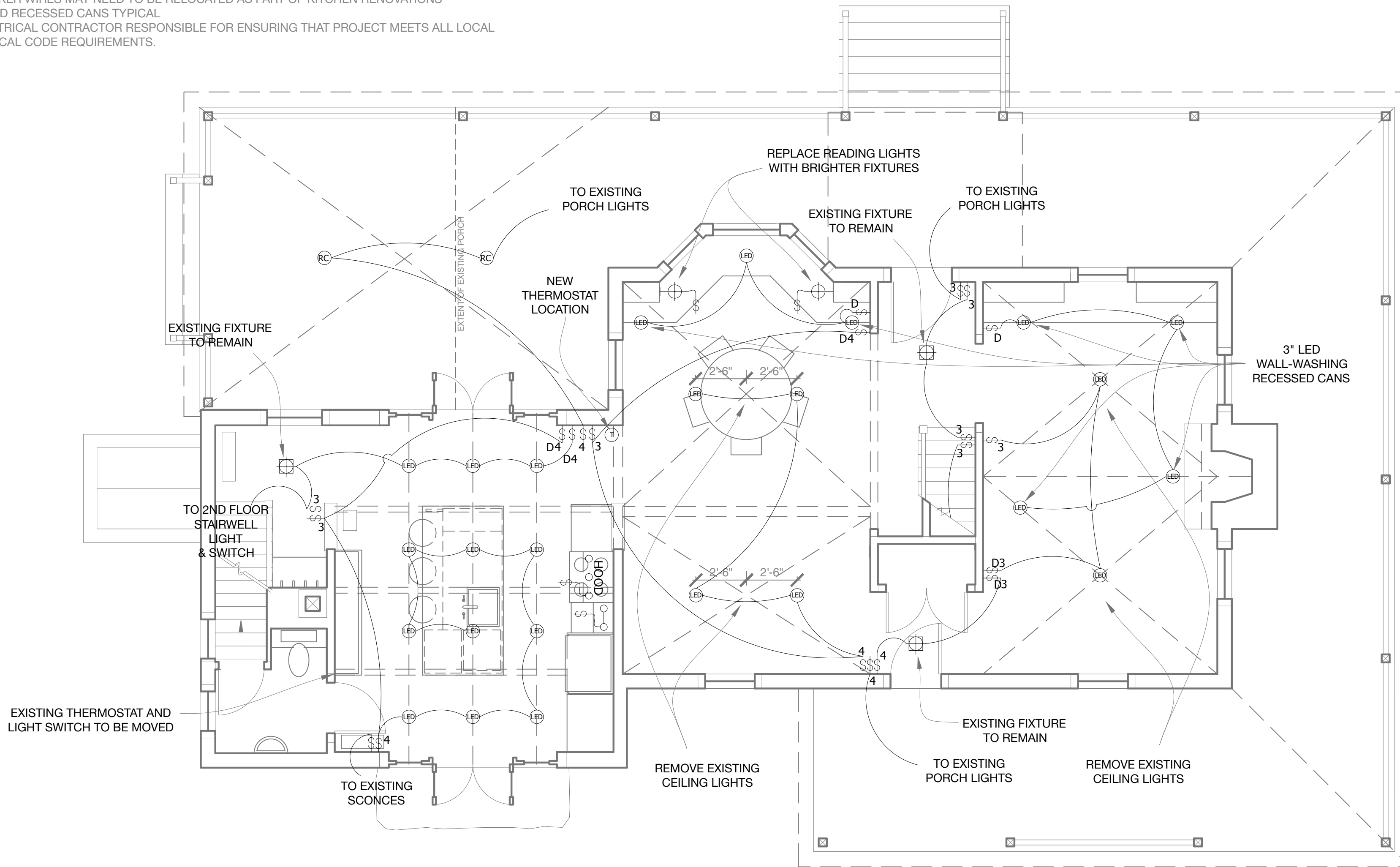


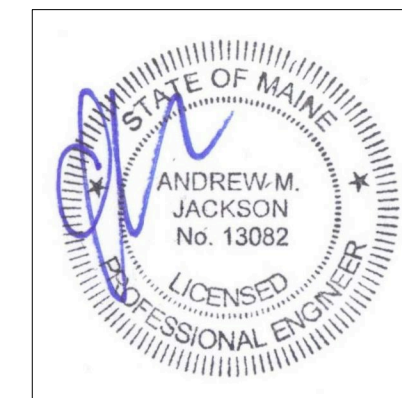
NOTES:

- 1.) ELECTRICAL, MECHANICAL, AND PLUMBING SPECIFICATIONS AND PERMITS BY OTHERS.
- 2.) REUSE EXISTING SWITCH LOCATIONS WHEN POSSIBLE.
- 2.) FUEL OIL FILL-PIPES WILL NEED TO BE RELOCATED (OR EXTENDED, IF POSSIBLE) AS PART OF PORCH EXPANSION
- 3.) (1) FROST-FREE SILLCOCK WILL NEED TO BE RELOCATED AS PART OF PORCH EXPANSION
- 4.) SPEAKER WIRES MAY NEED TO BE RELOCATED AS PART OF KITCHEN RENOVATIONS
- 5.) 4" LED RECESSED CANS TYPICAL
- 6.) ELECTRICAL CONTRACTOR RESPONSIBLE FOR ENSURING THAT PROJECT MEETS ALL LOCAL ELECTRICAL CODE REQUIREMENTS.



A Proposed Kitchen & Porch Lighting Plan

- NOTES:
- | | | | | | | | | | | | | | | | |
|--|----------------------------------|--|--------------------------|--|---------------------------------------|--|--|--|--|--|-------------------------------------|--|---------------------------------|--|---------------------|
| | DUPLEX RECEPTACLE | | 3-WAY SWITCH | | LOW PROFILE WALL SCONCE LIGHT FIXTURE | | WET LOCATION WALL SCONCE LIGHT FIXTURE | | RECESSED CAN LIGHT FIXTURE | | UNDER-COUNTER LIGHTS | | CEILING FAN WITH INTEGRAL LIGHT | | PHONE JACK |
| | GROUND FAULT CIRCUIT INTERRUPTER | | DIMMER SWITCH | | RECESSED "STAIR RISER" LIGHT FIXTURE | | CEILING MOUNT LIGHT FIXTURE | | COMPACT FLUORESCENT RECESSED CAN LIGHT | | TRACK LIGHTING | | CEILING FAN | | DSL JACK |
| | 240 V | | SMOKE DETECTOR | | WALL SCONCE LIGHT FIXTURE | | EXTERIOR FLOOD LIGHT LIGHT FIXTURE | | LED RECESSED CAN LIGHT | | LOCALLY SWITCHED CLOSET RATED LIGHT | | MINIMUM 50 CFM VENT FAN | | CABLE JACK |
| | SWITCH | | COMBO SMOKE/CO2 DETECTOR | | LOCALLY SWITCHED READING LIGHT | | PENDANT LIGHT FIXTURE | | LOCALLY SWITCHED READING LIGHT | | PENDANT LIGHT FIXTURE | | CAT 5 JACK | | CENTRAL VACUUM PORT |



Rachel Conly Design LLC
 26 Sterling Street
 Peaks Island, Maine 04108
 207.766.5625

DATE	NOTES
2017.01.03	Grade Comparison, REVISED
2017.01.17	Simplified Slab, New Girder, Hold-downs, No Skylights
2017.01.19	SK4: no hold-downs; SK5: laundry
2017.01.30	Kitchen Renovations & Porch Extension
2017.03.20	

1/4" = 1'

**Heselton Clements
 Bunkhouse/Studio**
 11 Ocean St.
 Peaks Island, ME 04108

SK13
 Proposed
 Kitchen & Porch
 Lighting Plan