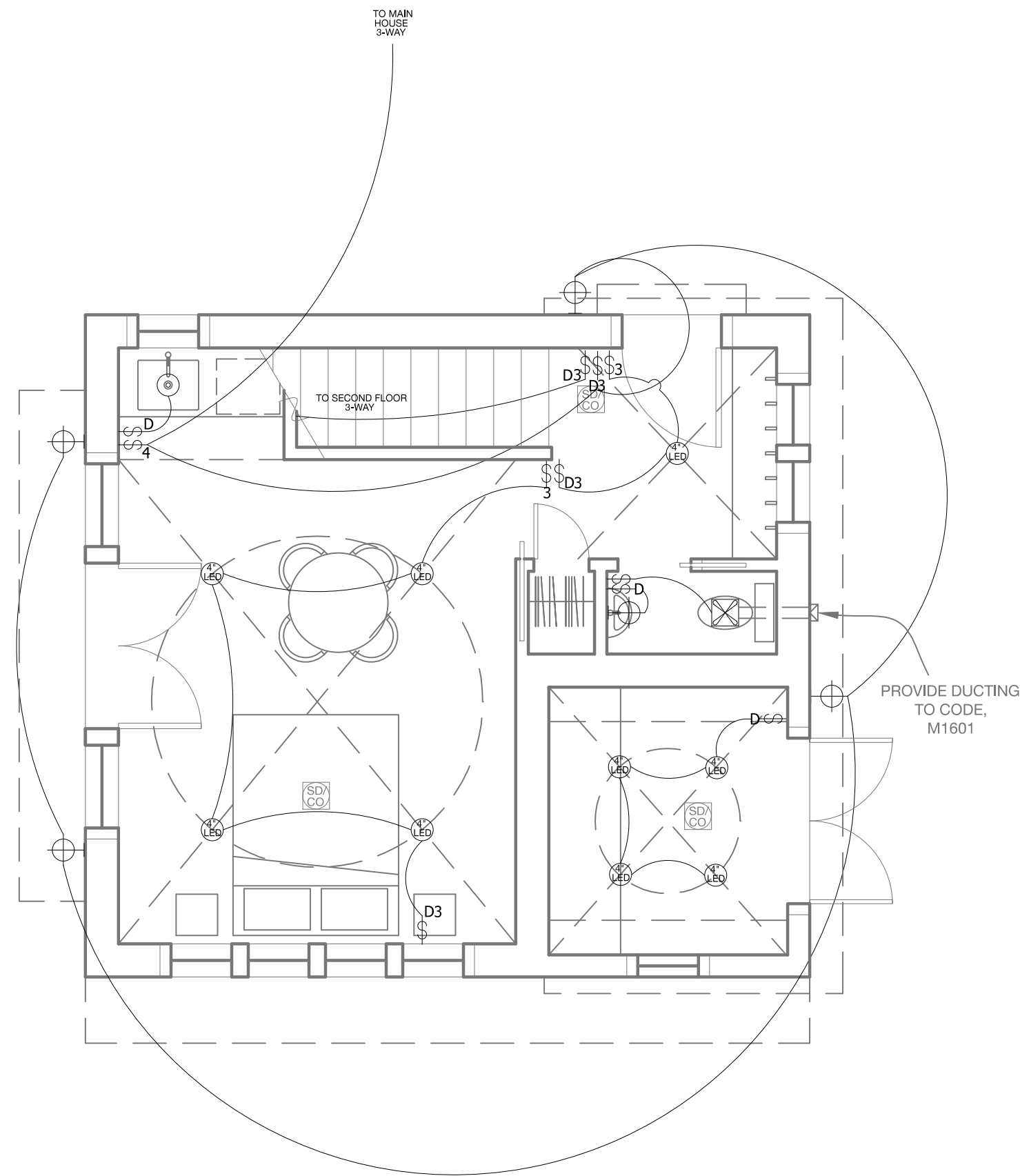
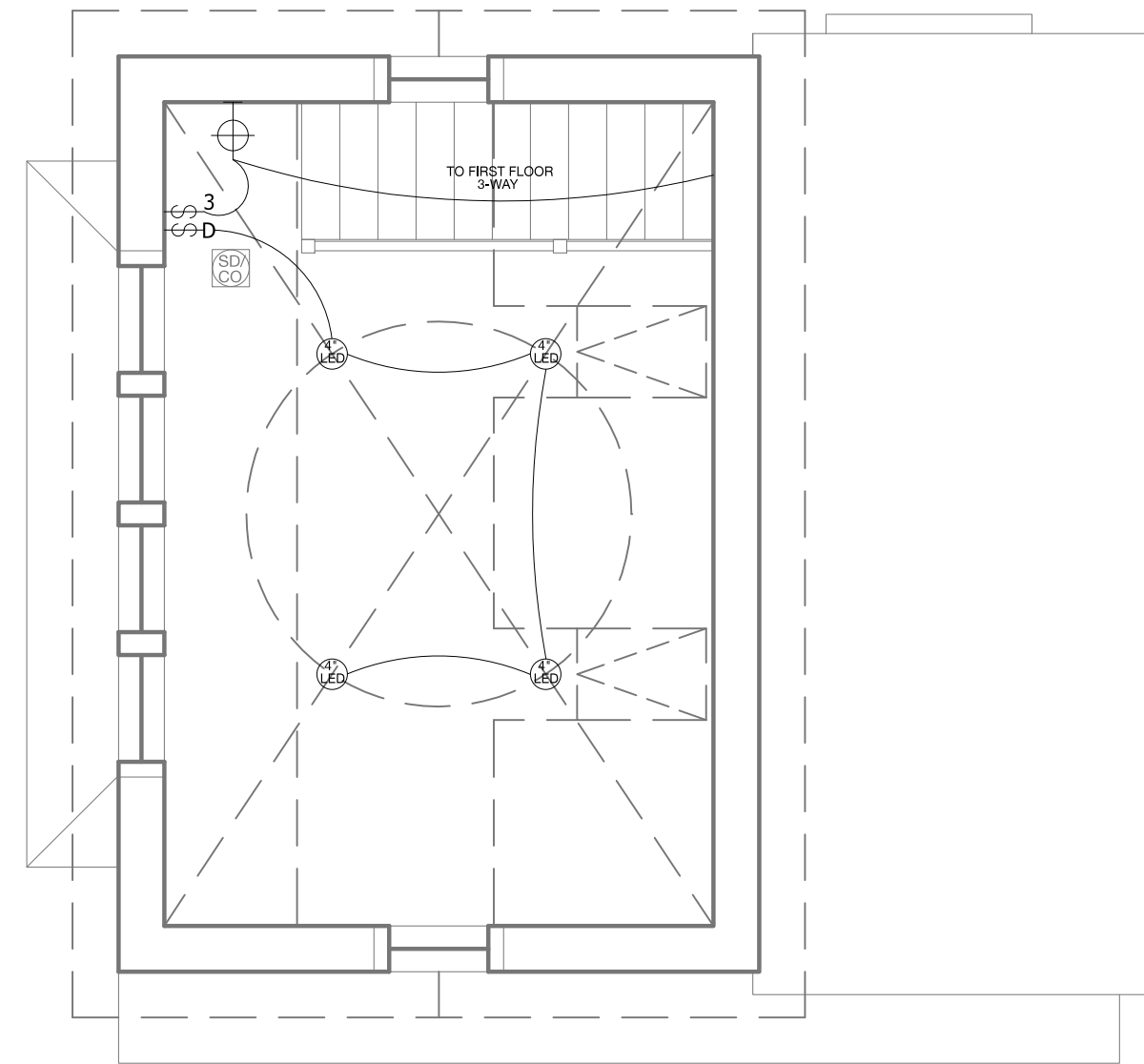


NOTE:  
 A. ELECTRICAL, PLUMBING, AND HVAC SPECIFICATIONS AND PERMITS BY OTHERS.  
 B. CONTRACTOR RESPONSIBLE FOR MEETING ALL APPLICABLE CODES.



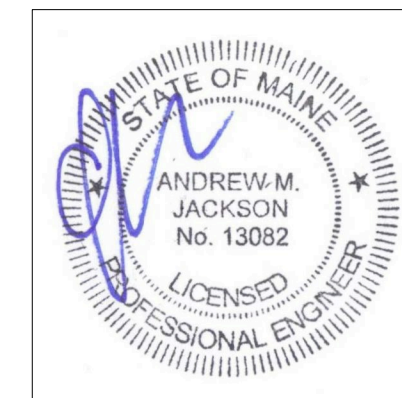
**A** Proposed First Floor Lighting

NOTE:  
 A. ELECTRICAL, PLUMBING, AND HVAC SPECIFICATIONS AND PERMITS BY OTHERS.  
 B. CONTRACTOR RESPONSIBLE FOR MEETING ALL APPLICABLE CODES.



**B** Proposed Second Floor Lighting

- NOTES:
- |  |                                  |  |                          |  |                                       |  |  |  |  |  |                                     |  |                                 |  |                     |
|--|----------------------------------|--|--------------------------|--|---------------------------------------|--|--|--|--|--|-------------------------------------|--|---------------------------------|--|---------------------|
|  | DUPLEX RECEPTACLE                |  | 3-WAY SWITCH             |  | LOW PROFILE WALL SCONCE LIGHT FIXTURE |  | WET LOCATION WALL SCONCE LIGHT FIXTURE |  | RECESSED CAN LIGHT FIXTURE             |  | UNDER-COUNTER LIGHTS                |  | CEILING FAN WITH INTEGRAL LIGHT |  | PHONE JACK          |
|  | GROUND FAULT CIRCUIT INTERRUPTER |  | DIMMER SWITCH            |  | RECESSED "STAIR RISER" LIGHT FIXTURE  |  | CEILING MOUNT LIGHT FIXTURE            |  | COMPACT FLUORESCENT RECESSED CAN LIGHT |  | TRACK LIGHTING                      |  | CEILING FAN                     |  | DSL JACK            |
|  | 240 V                            |  | SMOKE DETECTOR           |  | WALL SCONCE LIGHT FIXTURE             |  | EXTERIOR FLOOD LIGHT LIGHT FIXTURE     |  | LED RECESSED CAN LIGHT                 |  | LOCALLY SWITCHED CLOSET RATED LIGHT |  | MINIMUM 50 CFM VENT FAN         |  | CABLE JACK          |
|  | SWITCH                           |  | COMBO SMOKE/CO2 DETECTOR |  |                                       |  | LOCALLY SWITCHED READING LIGHT         |  | PENDANT LIGHT FIXTURE                  |  |                                     |  |                                 |  | CAT 5 JACK          |
|  |                                  |  |                          |  |                                       |  |  |  |  |  |                                     |  |                                 |  | CENTRAL VACUUM PORT |



Rachel Conly Design LLC  
 26 Sterling Street  
 Peaks Island, Maine 04108  
 207.766.5625

DATE	NOTES
2016.10.14	
REVISED	

1/4" = 1'

PROJECT  
**Heselton Clements**  
**Bunkhouse/Studio**  
 11 Ocean St.  
 Peaks Island, ME 04108

**E2**  
 Proposed  
 1st & 2nd Floor  
 Lighting Plans