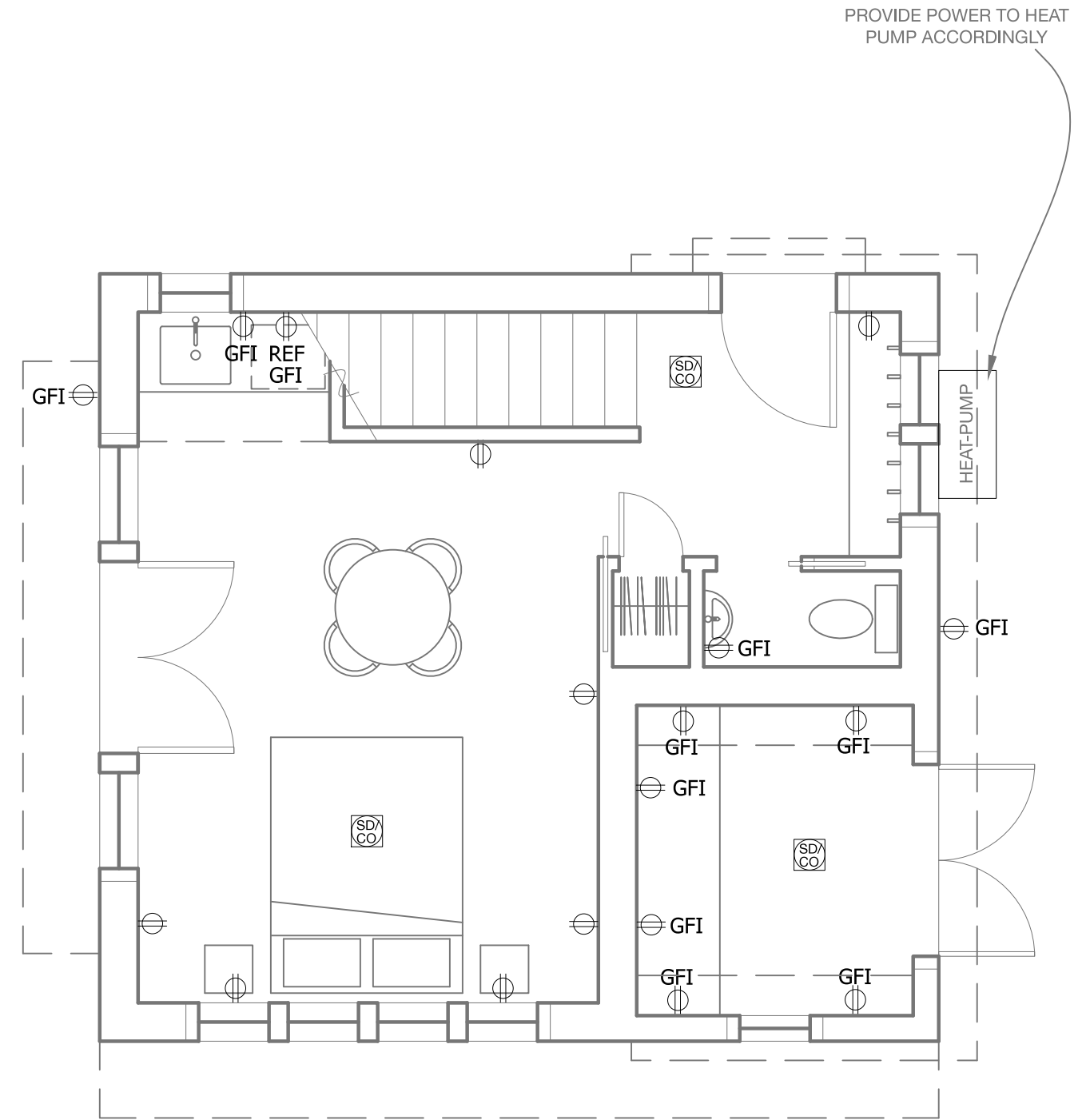
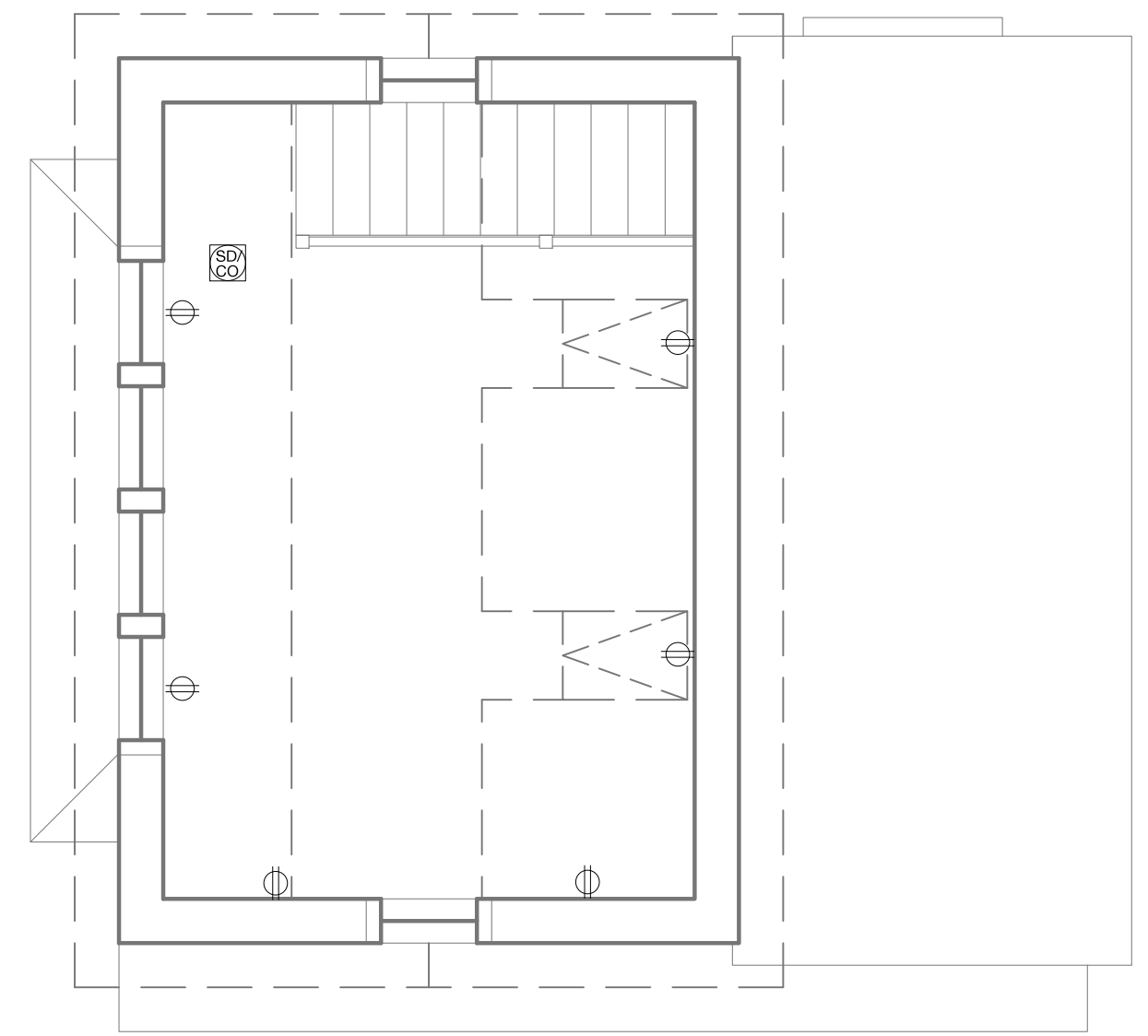


NOTE:
 A. ELECTRICAL, PLUMBING, AND HVAC SPECIFICATIONS AND PERMITS BY OTHERS.
 B. CONTRACTOR RESPONSIBLE FOR MEETING ALL APPLICABLE CODES.



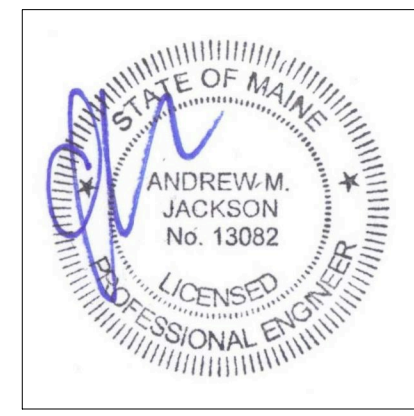
A Proposed First Floor Power

NOTE:
 A. ELECTRICAL, PLUMBING, AND HVAC SPECIFICATIONS AND PERMITS BY OTHERS.
 B. CONTRACTOR RESPONSIBLE FOR MEETING ALL APPLICABLE CODES.



B Proposed Second Floor Power

- NOTES:
- | | | | | | | | | | | | | | | | |
|--|----------------------------------|--|--------------------------|--|--|--|--|--|--|--|--------------------------------|--|---------------------------------|--|------------|
| | DUPLEX RECEPTACLE | | 3-WAY SWITCH | | LOW PROFILE WALL SCONCE LIGHT FIXTURE | | WET LOCATION WALL SCONCE LIGHT FIXTURE | | RECESSED CAN LIGHT FIXTURE | | UNDER-COUNTER LIGHTS | | CEILING FAN WITH INTEGRAL LIGHT | | PHONE JACK |
| | GROUND FAULT CIRCUIT INTERRUPTER | | DIMMER SWITCH | | RECESSED "STAIR RISER" LIGHT FIXTURE | | CEILING MOUNT LIGHT FIXTURE | | COMPACT FLUORESCENT RECESSED CAN LIGHT | | TRACK LIGHTING | | CEILING FAN | | DSL JACK |
| | 240 V | | SMOKE DETECTOR | | WET LOCATION WALL SCONCE LIGHT FIXTURE | | LED RECESSED CAN LIGHT | | LOCALLY SWITCHED CLOSET RATED LIGHT | | LOCALLY SWITCHED READING LIGHT | | MINIMUM 50 CFM VENT FAN | | CABLE JACK |
| | SWITCH | | COMBO SMOKE/CO2 DETECTOR | | WET LOCATION WALL SCONCE LIGHT FIXTURE | | LOCALLY SWITCHED READING LIGHT | | PENDANT LIGHT FIXTURE | | CAT 5 JACK | | CENTRAL VACUUM PORT | | CABLE JACK |



Rachel Conly Design LLC
 26 Sterling Street
 Peaks Island, Maine 04108
 207.766.5625

DATE	NOTES
2016.10.14	
REVISED	

1/4" = 1'

PROJECT
Heselton Clements
Bunkhouse/Studio
 11 Ocean St.
 Peaks Island, ME 04108

E1
 Proposed
 1st & 2nd Floor
 Power Plans