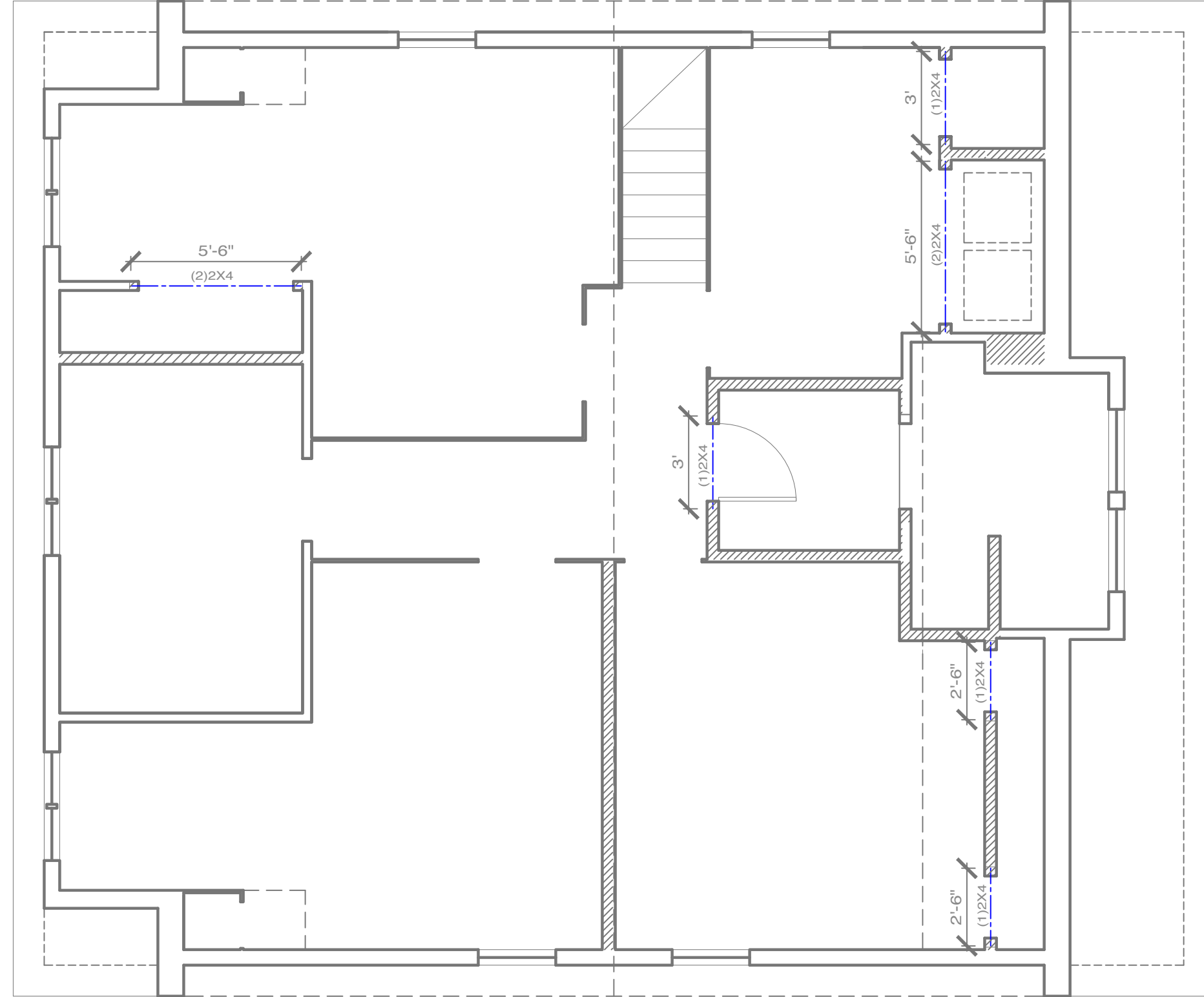


**NOTES:**

- 1.) NEW WALLS AND THICKENED WALLS TO BE 4½" TO 5" THICK, CLAD WITH T&G WOOD BOARDS TO MATCH EXISTING WALL BOARDS.
- 2.) ALL GIRDERS & HEADERS TO BE SUPPORTED BY (1) 2X4 JACK, UNLESS OTHERWISE NOTED.



EXISTING WALL  
NEW WALL

FASTENER SCHEDULE	
SILL PLATE TO FOUNDATION	12" ANCHOR BOLT @ 36" O.C. W/ 3" PLATE WASHER, 3" MIN. EMBEDMENT
ROOF SHEATHING	8d @ 6" O.C. EDGE / 12" O.C. FIELD (TYPICAL PANELS) 8d @ 6" O.C. EDGE / 6" O.C. FIELD (PERIMETER PANELS)
WALL SHEATHING	8d @ 6" O.C. EDGE / 12" O.C. FIELD
FLOOR SHEATHING	15d RING OR SPIRAL NAILS @ 6" O.C. EDGE / 12" O.C. FIELD
POST BASES TO CONCRETE	SIMPSON TYPE ANS; @ ABW
POST CAPS	SIMPSON BC OR LC (MATCH POST SIZE)
JOIST ON SILL, TOP PLATE, OR GIRDER	SIMPSON LUS HANGER OR 4 - 8d (TOENAIL) WHEN BEARS ON SUPPORT
BRIDGING / BLOCKING TO JOIST	2 - 8d (TOENAIL)
BLOCKING TO SILL / TOP PLATE	3 - 16d (TOENAIL)
LEDGER STRIP TO BEAM	3 - 16d (FACE NAILED, PER JOIST)
JOIST ON LEDGER TO BEAM	3 - 8d (TOENAIL)
BAND / RIM JOIST TO JOIST	3 - 16d (END NAILED)
RIM JOIST TO SILL / TOP PLATE	2 - 16d PER FOOT
TOP PLATE TO TOP PLATE	2 - 16d PER FOOT
TOP PLATES AT INTERSECTION	4 - 16d EACH SIDE
STUD TO STUD	1 - 16d @ 12" O.C.
HEADER TO HEADER	16d @ 8" O.C. ALONG EDGES
TOP OR BOTTOM PLATE TO STUD	2 - 16d
BOTTOM PLATE TO JOIST OR BLOCKING	2 - 16d PER FOOT
RAFTER TO TOP PLATE	SIMPSON H1 HURRICANE TIE
CEILING JOIST TO TOP PLATE	2 - 8d (TOENAIL)
BLOCKING TO RAFTER	2 - 8d EACH END
BAND JOIST TO RAFTER	2 - 16d EACH END
SLOPED/SKEWED RAFTER HANGERS AT RIDGEHIP BEAMS	SIMPSON LBU

DATE	NOTES
2017.07.20	SCHEMATIC SET
2017.08.28	REVISED SCHEMATIC SET
2017.08.29	PERMIT SUBMISSION

1/4" = 1'

**Rachel Conly Design LLC**  
26 Sterling Street  
Peaks Island, Maine 04108  
207.766.5625

**PROJECT**  
**Gulliver Residence**  
8 Diamond Pass  
Peaks Island, ME

**A Proposed Roof Framing Plan**

**S1**  
Proposed  
Roof  
Framing Plan