

Mulliken
8 Diamond Pass
Peck's Island

* All measurements
calculated using the
City of Portland Measure
615 Viewer online

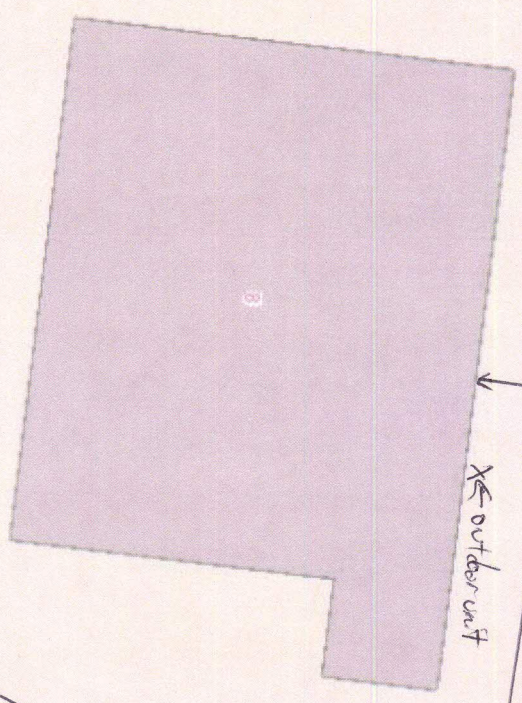
155.00

090 B003

@130'

@10'

X outdoor unit



090 B002

10155

@100'

Rear - access road from Diamond Pass

Front - Ocean

@102'

@118'

090 B001

20ft

2,945,166.097 302,926.959 Feet

30.8

40