

PLANTING NOTES

- THE CONTRACTOR SHALL PREPARE PLANTING ZONES TO THE GRADES AND DEPTHS AS INDICATED ON THE DRAWING.
- IF THE CONTRACTOR DETERMINES THE SUB-GRADE SOIL CONDITIONS ARE DELETERIOUS TO PLANT GROWTH OR WILL INHIBIT DRAINAGE, THE LANDSCAPE ARCHITECT SHALL BE NOTIFIED IMMEDIATELY AND PRIOR TO INSTALLATION OF PLANT MATERIAL.
- TOPSOIL SHALL BE FREE FROM SUBSOIL, STONES, LARGER THAN 7", OR ANY UNDESIRABLE MATERIAL; CONTAIN 5% ORGANIC MATTER AND HAVE A pH SUITABLE TO THE LOCAL GROWING CONDITIONS.
- ALL PLANTS TO BE SELECTED AND SEALED IN THE FIELD BY THE LANDSCAPE DESIGNER, OR SELECTED BY THE LANDSCAPE CONTRACTOR, AND APPROVED BY LANDSCAPE DESIGNER.
- THE PLANT LIST IS PROVIDED AS A CONVENIENCE TO THE CONTRACTOR. IN THE EVENT OF A DISCREPANCY BETWEEN THE PLANT COUNT SHOWN IN THE SCHEDULE AND THE DRAWING, THE DRAWING SHALL TAKE PRECEDENCE.
- ALL TRANSPLANTED SHRUBS SHALL BE "HEELD IN" OR HEAVILY MULCHED IN A SHADED AREA AND WATERED AS NECESSARY UNTIL THEY CAN BE PLANTED.
- FINAL LOCATION OF ALL PLANTS TO BE DETERMINED IN THE FIELD BY THE LANDSCAPE ARCHITECT PRIOR TO INSTALLATION OF PLANT MATERIAL.
- PLANTS SHALL BEAR SAME RELATIONSHIP TO FINISHED GRADE AS THE BORE TO EXISTING GRADE IN THE NURSERY.
- CUT AND REMOVE BURLAP FROM TOP 1/3 OF BALL. CUT AND REMOVE AT LEAST 1/3-1/2 OF WIRE BASKET. NYLON ROPE AND / OR NYLON BALLING MATERIAL IS NOT ACCEPTABLE.
- PLANT PERENNIALS AND GROUNDCOVER IN 6" DEEP TOPSOIL BED CONSISTING OF 2/3 TOPSOIL AND 1/3 HUMUS.
- TOPSOIL AND SEED ALL AREAS DISTURBED AS A RESULT OF ANY AND ALL DISTURBANCES, CONSTRUCTION, OR STORAGE OF EQUIPMENT WHETHER SUCH AREAS ARE SHOWN ON THE PLANS OR NOT WITH CONSERVATION MEADOW MIX. (SEE GRADING PLAN L3.0)
- ALL PLANTS AND ENTIRE SHRUB BEDS TO RECEIVE 6" OF CASSELLA'S ORGANICS OR EQUAL (40% COMPOST / 60% LOAM) AND A 3" LAYER OF DOUBLE SHREDDED HARDWOOD BARK MULCH.
- UPON COMPLETION OF THE ONE (1) YEAR PLANT GUARANTEE PERIOD, THE LANDSCAPE CONTRACTOR IS RESPONSIBLE FOR ADJUSTING OR REMOVING ALL STAKES. THIS SHALL BE DONE IN CONSULTATION WITH THE LANDSCAPE ARCHITECT.
- ALL TREE PLANTING AND REMOVAL TO COMPLY WITH LOCAL AND STATE TREE ORDINANCES.
- IRRIGATION DESIGN BY OTHERS

ID	BOTANICAL NAME	COMMON NAME	QTY	SIZE
<b>TREES</b>				
AC	AMELANCHIER CANADENSIS	SERVICEBERRY	2	10'-12'
BN	BETULA NIGRA	RIVER BIRCH 'HERITAGE'	2	10'-12'
CC	CIRCIS CANADENSIS	RED BUD	1	2" CAL.
MSP	MALUS SP.	APPLE VARIETY TBD	1	4" CAL.
MS	MAGNOLIA SOLANGIANA	SAUCER MAGNOLIA	1	2" CAL.
SP	STEWARTIA PSEUDOCAMILLA	JAPANESE STEWARTIA	1	7"-8"
<b>SHRUBS / PERENNIALS / GROUNDCOVER / VINES</b>				
CJ	CLEMATIS JCKMANII	CLEMATIS	5	1 GAL.
IC	ILEX CRENATA	INK BERRY HOLLY	27	7 GAL.
IV	ILEX VERTICILLATA	WINTERBERRY HOLLY	6	5 GAL.
PA1	PEROVSKIA ATRIPLICIFOLIA	RUSSIAN SAGE	32	1 GAL.
MSG	MISCANTHUS SENSIS	GRACILLIMUS	20	2 GAL.
CA	CALAMAGROSIS ACUTIFLORA	FEATHER REED GRASS	286	1 GAL.
PA	PENNISETUM ALOPECUROIDES	FOUNTAIN GRASS	240	1 GAL.
HSP	HYPNUM	MOSS	20 SF	
HA	HYDRANGEA ARBORESCENS	ANNABELLE	12	5 GAL.
VC	VACCINIUM CORYMBOSUM	HIGHBUSH BLUEBERRY	50	2 GAL.
VA	VACCINIUM ANGUSTIFOLIUM	LOWBUSH BLUEBERRY	735 SF	SOD
MS1	MATTEUCCIA STRUTHIOPTERIS	OSTRICH FERN	100	1 GAL.
DP	DENNSTAEDIA PUNCTILOBULA	HAYSCENTED FERN	220	PLUG
CA	CLETHRA ALNIFOLIA	SUMMER SWEET	50	5 GAL.
RSP	RUBUS SP.	RASPBERRY	24	1 GAL.
VP	VIBURNUM PLICATUM	DOUBLE FILE VIBURNUM	24	7 GAL.
NR	NEPETA RACEMOSA	WALKERS LOW	13	1 GAL.
RV	ROSA VIRGINIANA	VIRGINIA ROSE	67	2 GAL.
ACT	ASTILBE CHINENSIS TAQUETII	'PURPLE CANDLES'	40	2 GAL.

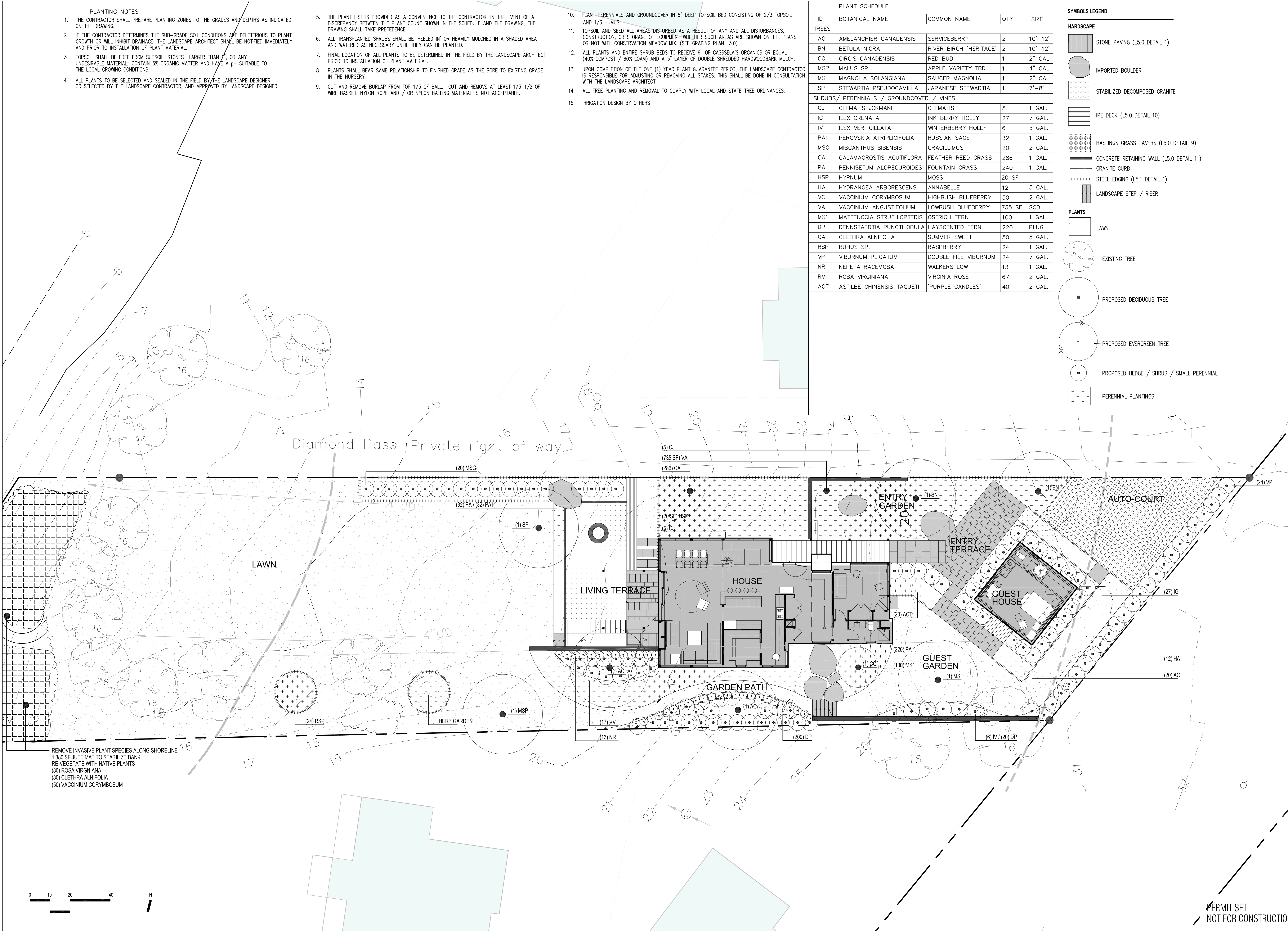
**SYMBOLS LEGEND**

**HARDSCAPE**

- STONE PAVING (L5.0 DETAIL 1)
- IMPORTED BOULDER
- STABILIZED DECOMPOSED GRANITE
- IPE DECK (L5.0 DETAIL 10)
- HASTINGS GRASS PAVERS (L5.0 DETAIL 9)
- CONCRETE RETAINING WALL (L5.0 DETAIL 11)
- GRANITE CURB
- STEEL EDGING (L5.1 DETAIL 1)
- LANDSCAPE STEP / RISER

**PLANTS**

- LAWN
- EXISTING TREE
- PROPOSED DECIDUOUS TREE
- PROPOSED EVERGREEN TREE
- PROPOSED HEDGE / SHRUB / SMALL PERENNIAL
- PERENNIAL PLANTINGS



REMOVE INVASIVE PLANT SPECIES ALONG SHORELINE  
 1,380 SF JUTE MAT TO STABILIZE BANK  
 RE-VEGETATE WITH NATIVE PLANTS  
 (80) ROSA VIRGINIANA  
 (80) CLETHRA ALNIFOLIA  
 (50) VACCINIUM CORYMBOSUM

**SPIRN GULLIVER RESIDENCE**  
 PEAKS ISLAND, MAINE

No: Revision Date:  
 1 Revision 9/5/2017

revisions:  
 date: JUNE 15, 2017  
 scale: As Noted  
 drawn: XX  
 checked: XX

**L4.0**  
 LANDSCAPE  
 PLANTING PLAN