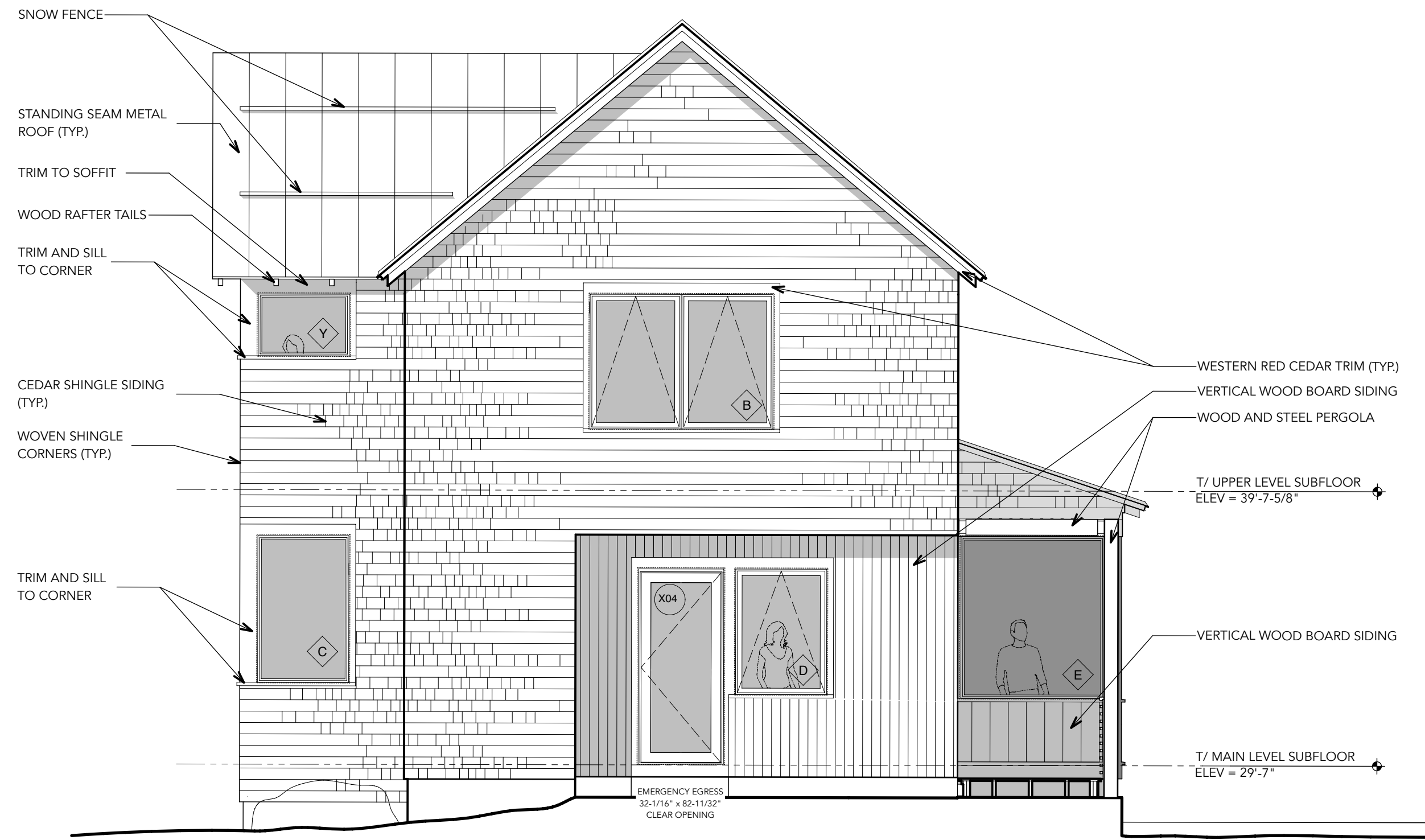
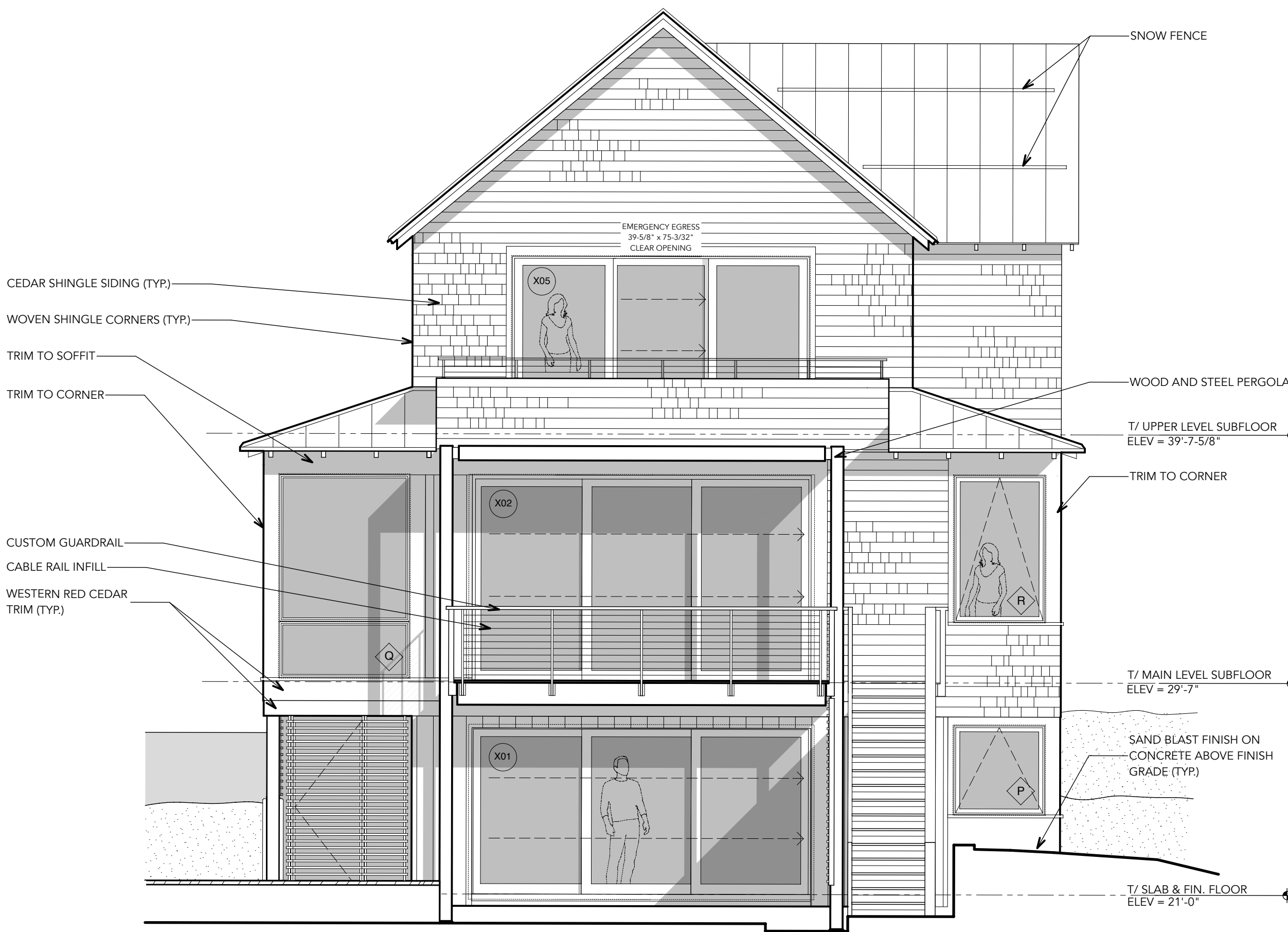


Notes:



1 EAST ELEVATION  
 SCALE: 1/4" = 1' - 0"



2 WEST ELEVATION  
 SCALE: 1/4" = 1' - 0"

EXTERIOR WINDOW & DOOR SCHEDULE										
SYM.	MANUF.	TYPE	UNIT #	R.O. WIDTH	R.O. HT (SEE NOTE 1.6)	MATERIAL	INTERIOR FINISH	SCREEN	REMARKS	
WINDOWS	A	MARVIN	AWNING	CUAWN4028	3'-5"	2'-3 5/8"	ALUMINUM CLAD WOOD	PAINTED	YES	--
	B	MARVIN	(2) AWNING	SEE REMARKS	6'-9 3/8"	4'-11 5/8"	ALUMINUM CLAD WOOD	PAINTED	YES	MULLED UNIT; (2) CUAWN4060 WITH 3/8" MULLION. REFER TO EXTERIOR ELEVATIONS FOR WINDOW / MULL CONFIGURATION
	C	MARVIN	DIRECT GLAZE	CRECT41[84-75]	3'-5"	5'-6"	ALUMINUM CLAD WOOD	WHITE OAK	--	--
	D	MARVIN	AWNING	CUAWN4056	3'-5"	4'-7 5/8"	ALUMINUM CLAD WOOD	PAINTED	YES	--
	E	MARVIN	DIRECT GLAZE	CRECT6372	5'-4"	5'-11 5/8"	ALUMINUM CLAD WOOD	WHITE OAK	--	--
	F	VELUX	FIXED CURB MOUNTED	FCM3434	3'-1 1/2"	3'-1 1/2"	ALUMINUM CLAD WOOD	PAINTED	--	FIXED CURB MOUNTED SKYLIGHT - CUTSOM FLASH TO ROOF WITH FLASHING TO MATCH ROOF COLOR
	G	MARVIN	(2) CASEMENT	SEE REMARKS	6'-9 3/8"	4'-11 5/8"	ALUMINUM CLAD WOOD	PAINTED	YES	MULLED UNIT; (2) CUCA4060 WITH 3/8" MULLION. REFER TO EXTERIOR ELEVATIONS FOR WINDOW / MULL CONFIGURATION
	H	MARVIN	DIRECT GLAZE	CRECT5484	4'-7"	6'-10 7/8"	ALUMINUM CLAD WOOD	WHITE OAK	--	--
	I	MARVIN	AWNING	CUAWN3640	3'-1"	3'-3 5/8"	ALUMINUM CLAD WOOD	PAINTED	YES	--
	J	MARVIN	(2) AWNING	SEE REMARKS	6'-9 3/8"	4'-7 5/8"	ALUMINUM CLAD WOOD	PAINTED	YES	MULLED UNIT; (2) CUAWN4056 WITH 3/8" MULL. REFER TO EXTERIOR ELEVATIONS FOR WINDOW / MULL CONFIGURATION
	K	MARVIN	AWNING	CUAWN5456	4'-7"	4'-7 5/8"	ALUMINUM CLAD WOOD	WHITE OAK	YES	--
	L	MARVIN	DIRECT GLAZE	CRECT4472	3'-9"	5'-11 5/8"	ALUMINUM CLAD WOOD	WHITE OAK	--	--
	M	MARVIN	(2) AWNING	SEE REMARKS	7'-5 3/8"	5'-11 5/8"	ALUMINUM CLAD WOOD	WHITE OAK	YES	MULLED UNIT; (2) CUAWN4472 WITH 3/8" MULL. REFER TO EXTERIOR ELEVATIONS FOR WINDOW / MULL CONFIGURATION
	N	MARVIN	(2) AWNING (2) DIRECT GLAZE	SEE REMARKS	7'-5 3/8"	8'-3 1/8"	ALUMINUM CLAD WOOD	WHITE OAK	YES	MULLED UNIT; (2) CUAWN4472; (2) CRECT4428 WITH 3/8" MULL. REFER TO EXTERIOR ELEVATIONS FOR WINDOW / MULL CONFIGURATION
	O	MARVIN	(4) DIRECT GLAZE	SEE REMARKS	7'-5 3/8"	8'-3 3/8"	ALUMINUM CLAD WOOD	WHITE OAK	--	MULLED UNIT; (2) CRECT4472; (2) CRECT4428 WITH 3/8" MULL. REFER TO EXTERIOR ELEVATIONS FOR WINDOW / MULL CONFIGURATION
	P	MARVIN	AWNING	CUAWN4444	3'-9"	3'-7 5/8"	ALUMINUM CLAD WOOD	PAINTED	YES	--
	Q	MARVIN	(2) DIRECT GLAZE	SEE REMARKS	5'-4"	8'-3 1/8"	ALUMINUM CLAD WOOD	WHITE OAK	--	MULLED UNIT; (1) CRECT6372; (1) CRECT6328 WITH 3/8" MULL. REFER TO EXTERIOR ELEVATIONS FOR WINDOW / MULL CONFIGURATION
	R	MARVIN	AWNING	CUAWN4472	3'-9"	5'-11 3/8"	ALUMINUM CLAD WOOD	WHITE OAK	YES	--
	S	MARVIN	AWNING	CUAWN2828	2'-5"	2'-3 5/8"	ALUMINUM CLAD WOOD	PAINTED	YES	--
	T	MARVIN	(1) AWNING (1) DIRECT GLAZE	SEE REMARKS	4'-7"	6'-10 7/8"	ALUMINUM CLAD WOOD	WHITE OAK	YES	MULLED UNIT; (1) CUAWN5428; (1) CRECT5456 WITH 3/8" MULL. REFER TO EXTERIOR ELEVATIONS FOR WINDOW / MULL CONFIGURATION
	U	MARVIN	AWNING	CUAWN2828	2'-5"	2'-3 5/8"	ALUMINUM CLAD WOOD	WHITE OAK	YES	--
	V	MARVIN	(1) AWNING (1) DIRECT GLAZE	SEE REMARKS	6'-5 3/8"	5'-5"	ALUMINUM CLAD WOOD	WHITE OAK	YES	MULLED UNIT; (1) CUAWN38[84.75]; (1) CRECT38[84.75] WITH 3/8" MULL. REFER TO EXTERIOR ELEVATIONS FOR WINDOW / MULL CONFIGURATION
	W	MARVIN	(1) AWNING (1) DIRECT GLAZE	SEE REMARKS	4'-7"	6'-10 7/8"	ALUMINUM CLAD WOOD	WHITE OAK	YES	MULLED UNIT; (1) CRECT5456; (1) CUAWN5428 WITH 3/8" MULL. REFER TO EXTERIOR ELEVATIONS FOR WINDOW / MULL CONFIGURATION
	X	MARVIN	(2) AWNING	SEE REMARKS	7'-5 3/8"	3'-7 5/8"	ALUMINUM CLAD WOOD	PAINTED	YES	MULLED UNIT; (2) CUAWN4444 WITH 3/8" MULL. REFER TO EXTERIOR ELEVATIONS FOR WINDOW / MULL CONFIGURATION
Y	MARVIN	(2) CASEMENT	SEE REMARKS	5'-9 3/8"	3'-7 5/8"	ALUMINUM CLAD WOOD	PAINTED	YES	MULLED UNIT; (1) CUCA2844; (1) CUCA4044 WITH 3/8" MULL. REFER TO EXTERIOR ELEVATIONS FOR WINDOW / MULL CONFIGURATION	
Z	MARVIN	AWNING	CUAWN4428	3'-9"	2'-3 5/8"	ALUMINUM CLAD WOOD	PAINTED	YES	--	
AA	MARVIN	(2) AWNING	SEE REMARKS	6'-9 3/8"	2'-3 5/8"	ALUMINUM CLAD WOOD	PAINTED	YES	MULLED UNIT; (2) CUAWN4028 WITH 3/8" MULL. REFER TO EXTERIOR ELEVATIONS FOR WINDOW / MULL CONFIGURATION	
BB	MARVIN	AWNING	CUAWN2828	2'-5"	2'-3 5/8"	ALUMINUM CLAD WOOD	PAINTED	YES	--	
CC	MARVIN	(2) AWNING	SEE REMARKS	6'-9 3/8"	4'-7 5/8"	ALUMINUM CLAD WOOD	PAINTED	YES	MULLED UNIT; (2) CUAWN4056 WITH 3/8" MULL. REFER TO EXTERIOR ELEVATIONS FOR WINDOW / MULL CONFIGURATION	
DOORS	X01	MARVIN	MULTI-SLIDE	XXXP 14070	19'-1 9/16"	7'-15/16"	ALUMINUM CLAD WOOD	PAINTED	--	CONTEMPORARY HANDLE" - FINISH TBD
	X02	MARVIN	MULTI-SLIDE	XXXP 14086	19'-1 9/16"	8'-6 3/4"	ALUMINUM CLAD WOOD	WHITE OAK	--	CONTEMPORARY HANDLE" - FINISH TBD
	X03	MARVIN	IN SWING FRENCH	CMFD3080 (CONTEMPORARY)	3'-2 7/16"	8'-0"	ALUMINUM CLAD WOOD	WHITE OAK	--	DOOR TO HAVE FACTORY APPLIED 6-9/16" EXTERIOR EXTENSION JAMB; INCLUDE WITH "STANDARD HARDWARE - CONTEMPORARY HANDLE" - FINISH TBD
	X04	MARVIN	IN SWING FRENCH	CUFD3070 (CONTEMPORARY)	3'-2 7/16"	7'-2 1/2"	ALUMINUM CLAD WOOD	PAINTED	--	CONTEMPORARY HANDLE" - FINISH TBD
	X05	MARVIN	ULTIMATE SLIDING FRENCH	CU5FD 0X0 120R66R	12'-1 1/4"	6'-8"	ALUMINUM CLAD WOOD	PAINTED	--	CONTEMPORARY HANDLE" - FINISH TBD
	X06	MARVIN	ULTIMATE SLIDING FRENCH	CU5FD X0 6R66R	8'-0"	6'-10 1/2"	ALUMINUM CLAD WOOD	PAINTED	--	CONTEMPORARY HANDLE" - FINISH TBD

NOTES: (PLEASE READ)

- WINDOW AND DOOR MANUFACTURER TO BE "MARVIN" (OAE)
- VERIFY ALL ROUGH OPENING REQUIREMENTS PRIOR TO ROUGH CARPENTRY AND WINDOW ORDER.
- PROVIDE SHOP DRAWINGS FOR ARCHITECT'S REVIEW PRIOR TO WINDOW AND DOOR ORDER. SHOP DRAWINGS SHOULD INCLUDE ALL INFORMATION PERTINENT TO EACH UNIT. INCLUDE DRAWN ELEVATIONS OF EACH WINDOW / DOOR TYPE, INCLUDING MULL PATTERNS AND SWING DIRECTIONS.
- WINDOW MANUFACTURER TO DESIGNATE REINFORCED MULLS WHERE REQ'D TO MAINTAIN DESIGN PRESSURE RATINGS - NOTE: UNITS ARE GENERALLY SPACED TO ALIGN FOR A 3/8" MULL. (ALERT ARCHITECT OF ANY POTENTIAL REQ'D SIZING ADJUSTMENTS)
- WINDOW UNITS TO UTILIZE CLEAR LOW-E 272 GLAZING AND BE TEMPERED WHERE REQ'D BY CODE (NOTE: TEMPERED UNITS ON SHOP DRAWINGS FOR ARCHITECT'S REVIEW).
- UNITS SPECIFIED AS EMERGENCY EGRESS UNITS TO MEET ALL APPLICABLE EGRESS REQUIREMENTS FOR OPENABLE AREA, ELEVATION FROM FLOOR, AND HARDWARE (SEE EXTERIOR ELEVATIONS).
- CASEMENT AND AWNING OPERATOR TO BE MANUFACTURER'S "FOLDING HANDLE". HARDWARE FINISH (TBD) - COORDINATE FINAL SELECTION WITH ARCHITECT PRIOR TO ORDERING.
- SWINGING DOOR HANDLE TO BE MANUFACTURER'S STANDARD "CONTEMPORARY HANDLE" IN TBD HARDWARE FINISH. (PLEASE PRICE AS OIL RUBBED BRONZE PVD)
- SLIDING DOOR HANDLES TO BE MANUFACTURER'S "CONTEMPORARY SLIDING DOOR HANDLE" IN TBD HARDWARE FINISH. (PLEASE PRICE AS OIL RUBBED BRONZE PVD)
- MANUFACTURER'S EXTERIOR CLAD COLOR (TBD) - NOTE: PRICE ALL "MARVIN" DOORS AS MANUFACTURER'S "CADET GRAY" FINISH - COORDINATE FINAL COLOR SELECTION WITH ARCHITECT PRIOR TO ORDERING.
- PAINTING SUBCONTRACTOR TO ADD AN ADDITIONAL PAINT FINISH TO WINDOW FRAMES & SASHES DESIGNATED AS PAINTED.
- WINDOWS WITH INTERIOR SCREENS TO INCLUDE WOOD VENEERED INSECT SCREEN FRAME WITH FINISH TO MATCH WINDOW FRAMES AND SASHES.
- IN SWING FRENCH DOOR TO HAVE A 4-3/4" BOTTOM RAIL (CONTEMPORARY).
- MULTI-SLIDE DOORS TO HAVE MANUFACTURER'S "HIGH PERFORMANCE SILL".
- STICKING: STICKING TO BE MANUFACTURER'S SQUARE STICKING.
- ADD TO R.O. HEIGHT WHERE REQ'D TO ACCOMMODATE "SILL PAN" INSTALLATION AS RECOMMENDED BY WINDOW / DOOR MANUFACTURER.
- FOLLOW ALL MANUFACTURER GUIDELINES FOR INSTALLATION. AFTER INSTALLATION, PROVIDE SIGNED LETTER TO OWNER & ARCHITECT FROM MANUFACTURER CONFIRMING THAT INSTALLATION MEETS ALL WARRANTY REQUIREMENTS.

Architect:

Whitten Architects  
 37 Silver Street  
 Portland, Maine 04101  
 Phone: (207) 774-0111  
 www.whittenarchitects.com

Landscape Architect:

Soren DeNiord Design Studio  
 43 Wellwood Road  
 Portland, Maine 04103  
 Phone: (207) 400-2450

Civil Engineer:

Walsh Engineering Assoc. Inc.  
 One Karen Drive, Suite 2A  
 Westbrook, Maine 04092  
 Phone: (207) 553-9898

Structural Engineer:

Albert Putnam Associates  
 183 Park Row  
 Brunswick, Maine 04011  
 Phone: (207) 729-6230

General Contractor:

Bunton Construction  
 87 Middle Road  
 Cumberland Center,  
 Maine 04021  
 Phone: (207) 829-6438

Drawing:

EXTERIOR  
 ELEVATIONS &  
 WINDOW SCHEDULE

Date:

June 15, 2017  
 September 5, 2017 REV-1

Issue:

PERMIT SET