

Revision:
Proposed
Lighting Plans

PROJECT

Lieber Residence

41 Bayberry Lane
Peaks Island, Me.
04108

DATE

REVISED 8.1.12

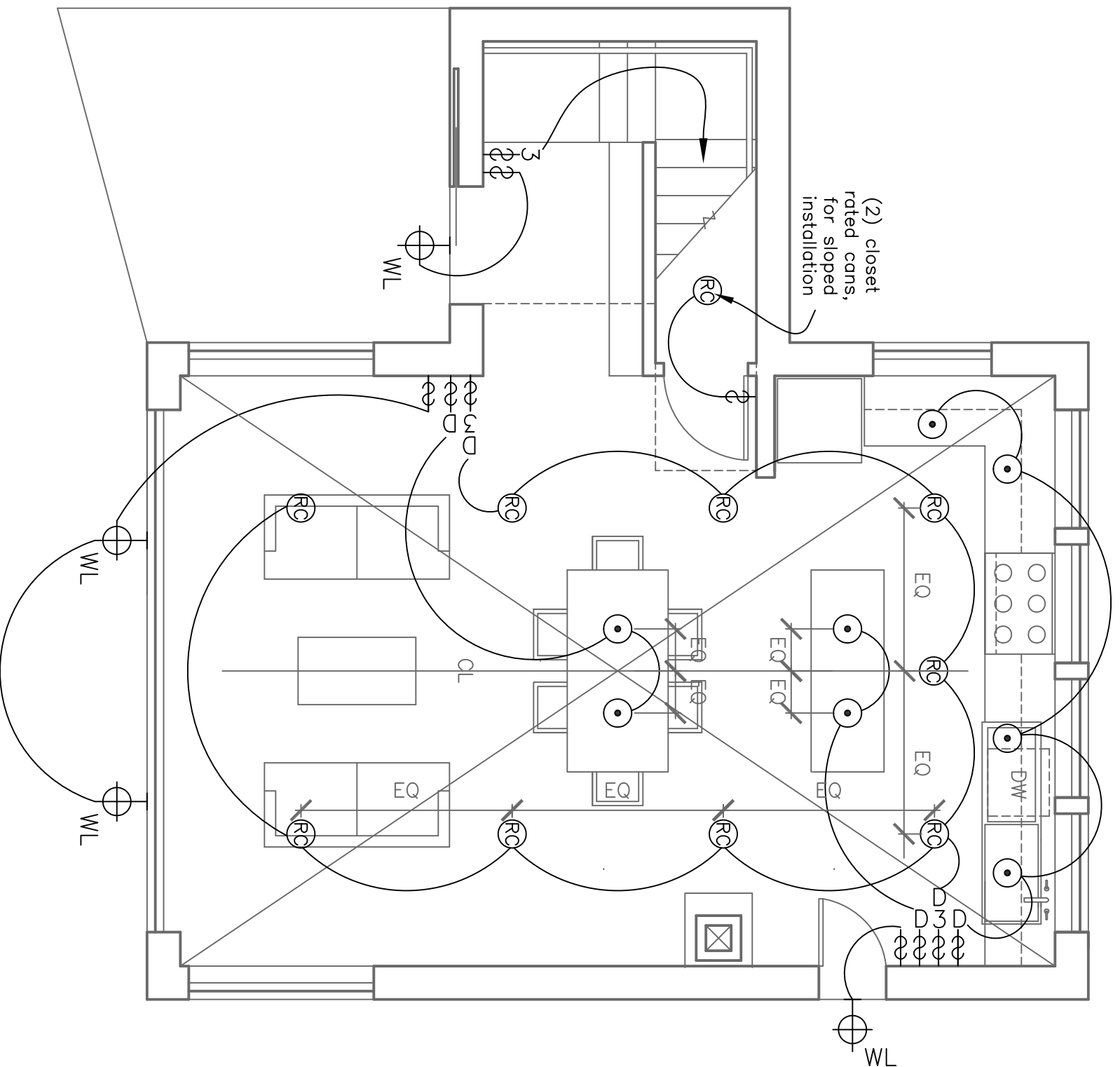
SCALE

$\frac{1}{4}'' = 1' - 0''$

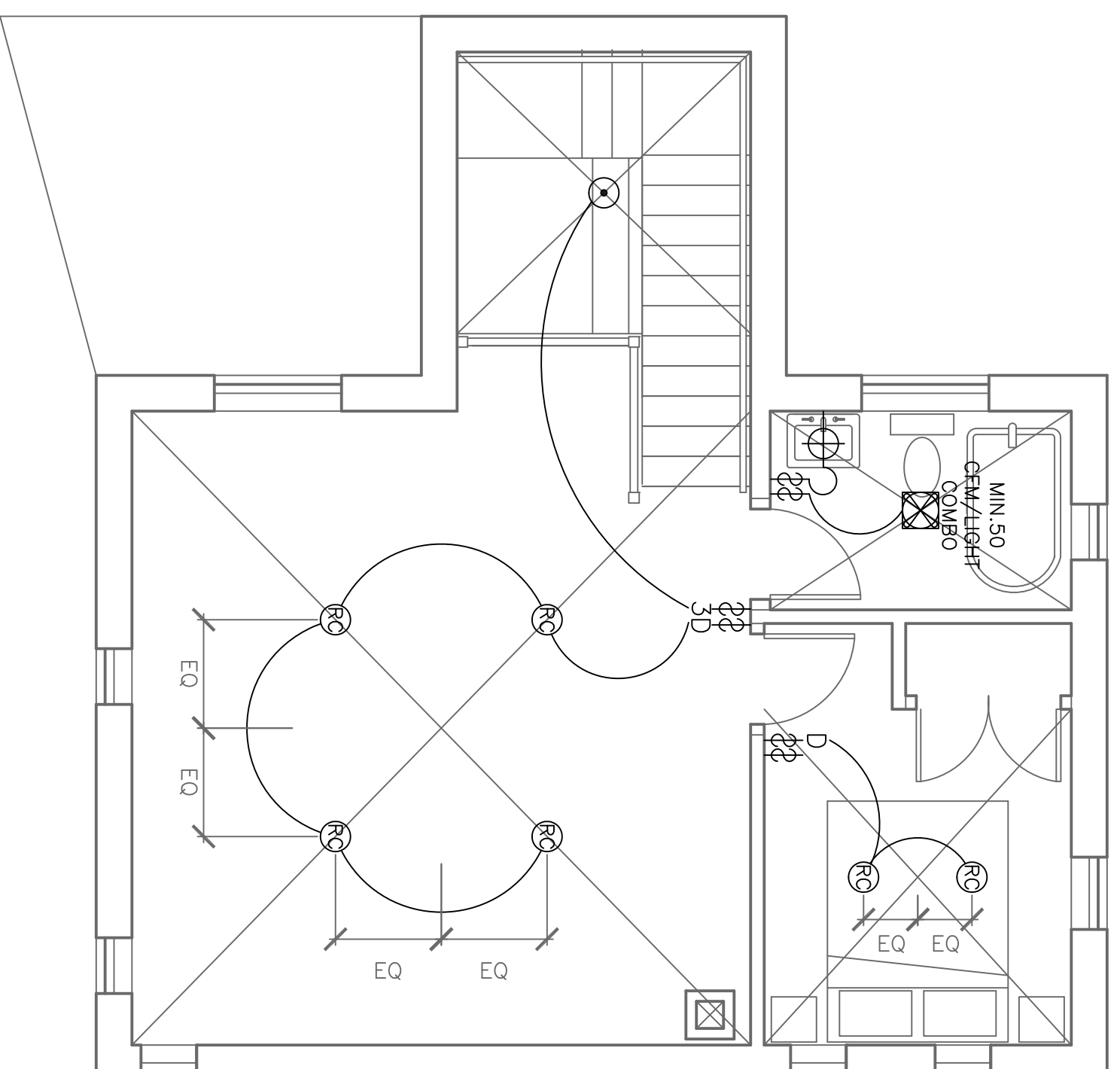
DRAWN BY
Rachel

NOTES

- ⊕ duplex
- ⊕ ground-fault circuit interrupter
- ⊕ 220 volt switch
- ⊕ 3-way switch
- ⊕ dimmer switch
- ⊕ smoke detector
- ⊕ minimum 50 dfm wet fan
- ⊕ MIN.50 CFM
- ⊕ ceiling mount pendant light fixture
- ⊕ recessed can light fixture
- ⊕ wall sconce light fixture
- ⊕ wet location wall sconce light fixture
- ⊕ recessed track lighting
- ⊕ fluorescent body switched
- ○ ○ ○ undercounter
- ⊕ ceiling fan / integral light
- ⊕ ceiling fan
- ⊕ phone jack
- ⊕ DSL
- ⊕ CABLE
- ⊕ OUT 5
- ⊕ central vacuum
- ⊕ compact fluorescent recessed can



A Proposed First Floor Lighting Plan
 $\frac{1}{4}'' = 1' - 0''$



B Proposed Second Floor Lighting Plan
 $\frac{1}{4}'' = 1' - 0''$