

Rachel Conly

Architectural Design

Peaks Island, Maine 04108
207.766.5625

Revision:
Proposed
Power Plans

PROJECT

Lieber Residence

41 Bayberry Lane
Peaks Island, Me.
04108

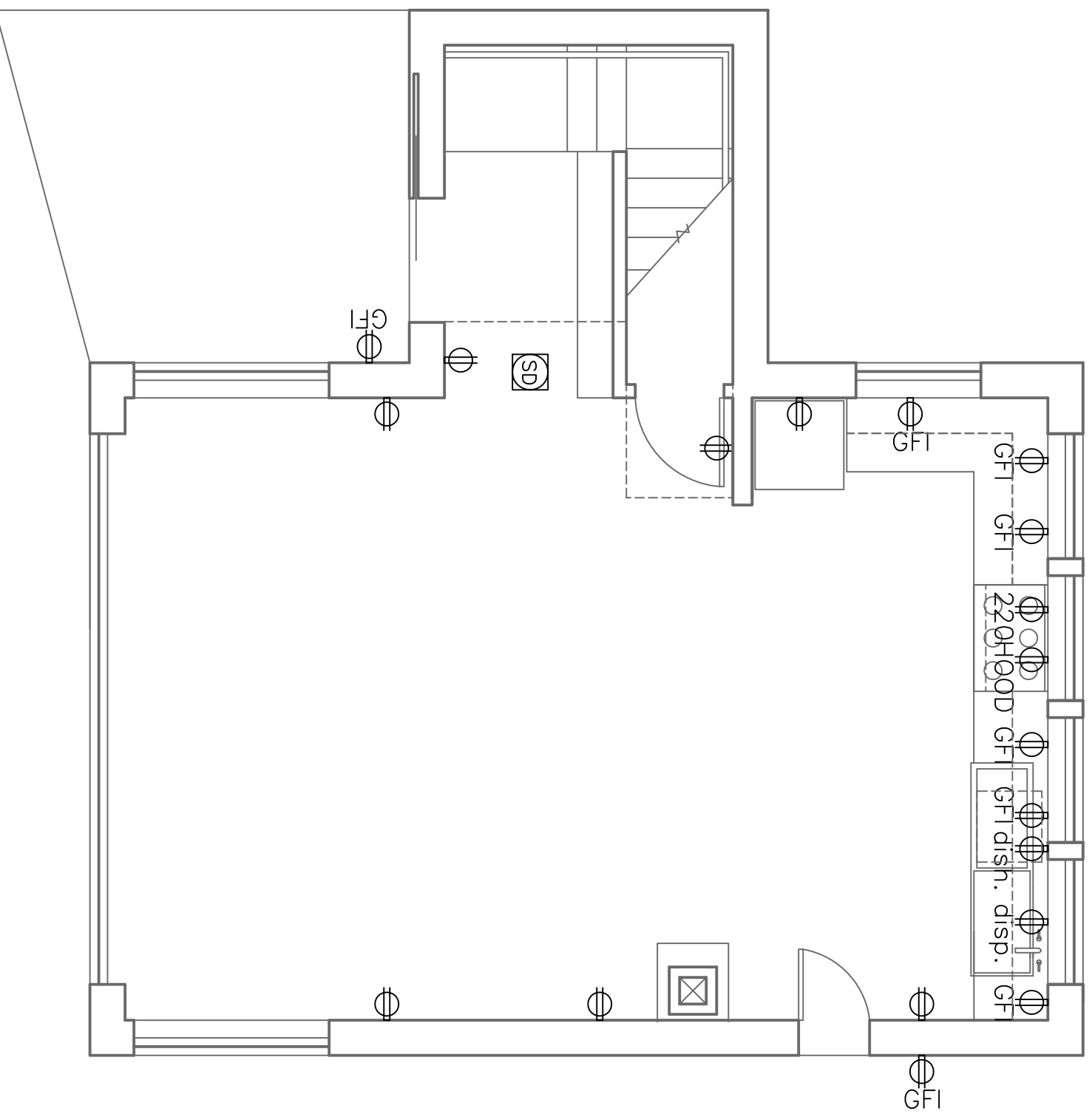
DATE 8.1.12

REVISED

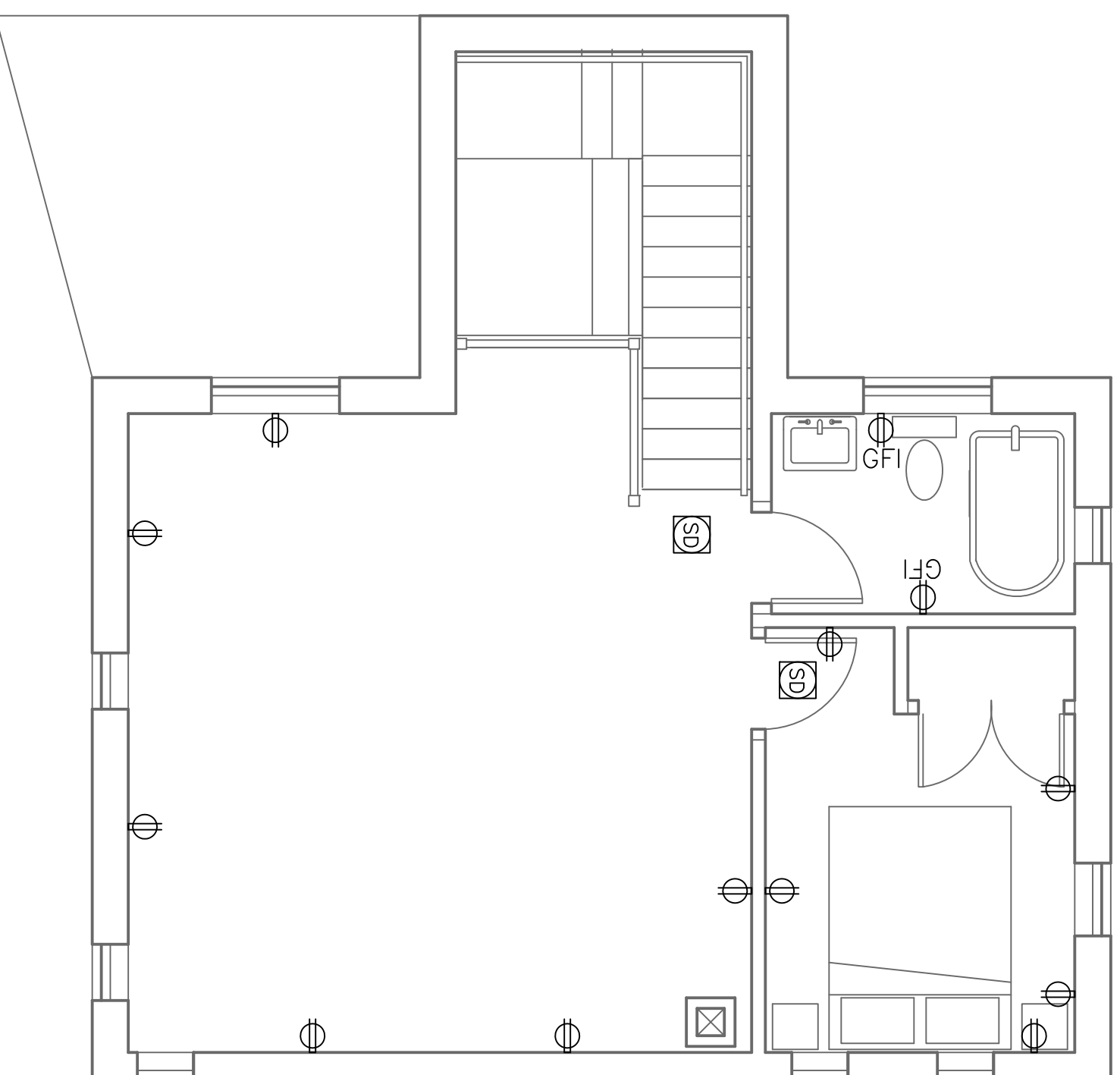
SCALE 1/4" = 1'-0"
DRAWN BY Rachel

NOTES

- ⊕ duplex
- ⊕ ground-fault circuit interrupter
- ⊕ 220 volt
- ⊕ switch
- ⊕ 3-way switch
- ⊕ dimmer switch
- ⊕ smoke detector
- ⊕ minimum 50 fpm vent fan
- ⊕ MIN 50 CFM
- ⊕ ceiling mount light fixture
- ⊕ pendant light fixture
- ⊕ recessed can light fixture
- ⊕ wall sconce light fixture
- ⊕ wet location wall sconce light fixture
- ⊕ fan lighting
- ⊕ fluorescent body switched
- undercounter
- ⊕ ceiling fan / integral light
- ⊕ ceiling fan
- ⊕ phone jack
- ⊕ DSL
- ⊕ ISL
- ⊕ CABLE
- ⊕ OUT 5
- ⊕ central vacuum
- ⊕ compact fluorescent recessed can



A Proposed First Floor Power Plan
1/4" = 1'-0"



B Proposed Second Floor Power Plan
1/4" = 1'-0"

E1