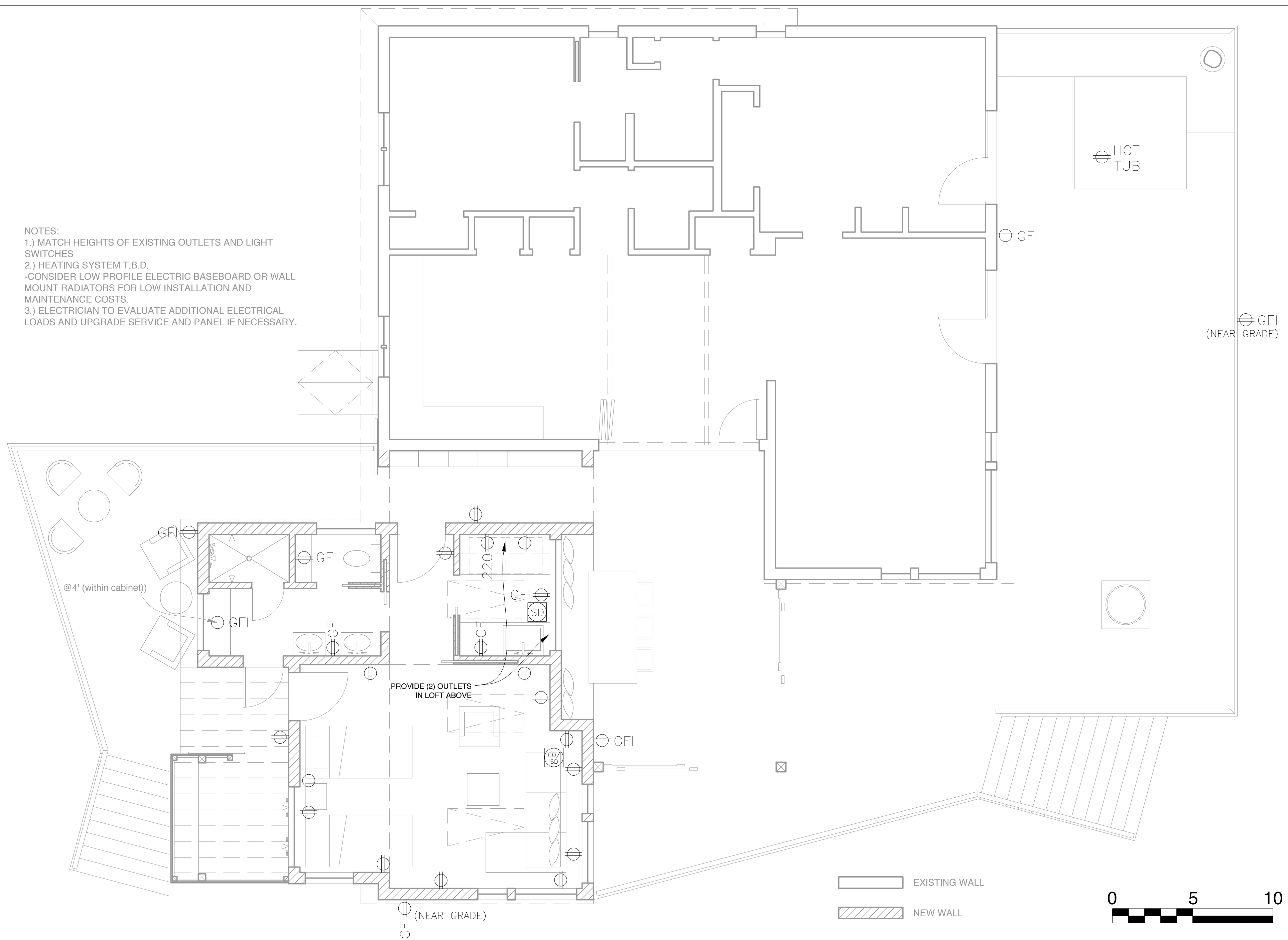


NOTES:
 1.) MATCH HEIGHTS OF EXISTING OUTLETS AND LIGHT SWITCHES
 2.) HEATING SYSTEM T.B.D.
 -CONSIDER LOW PROFILE ELECTRIC BASEBOARD OR WALL MOUNT RADIATORS FOR LOW INSTALLATION AND MAINTENANCE COSTS.
 3.) ELECTRICIAN TO EVALUATE ADDITIONAL ELECTRICAL LOADS AND UPGRADE SERVICE AND PANEL IF NECESSARY.



Rachel Conly
 Architectural Design
 26 Sterling Street
 Peaks Island, Maine 04108
 207.766.5625

DATE	NOTES
2015.06.25	
REVISED	

Cordelia Nicholas LLC House
 610 Seashore Ave.
 Peaks Island, ME
 04108

PROJECT

A Proposed First Floor Power Plan

1/4" = 1'-0"

- NOTES:
- | | | | | | | | | | | | | | |
|--|----------------------------------|--|--------------------------|--|--|--|--|--|-------------------------------------|--|---------------------------------|--|---------------------|
| | DUPLEX RECEPTACLE | | 3-WAY SWITCH | | CEILING MOUNT LIGHT FIXTURE | | PENDANT LIGHT FIXTURE | | UNDER-COUNTER LIGHTS | | CEILING FAN WITH INTEGRAL LIGHT | | PHONE JACK |
| | GROUND FAULT CIRCUIT INTERRUPTER | | DIMMER SWITCH | | WALL SCONCE LIGHT FIXTURE | | RECESSED CAN LIGHT FIXTURE | | TRACK LIGHTING | | CEILING FAN | | DSL JACK |
| | 240 V | | SMOKE DETECTOR | | LOW PROFILE WALL SCONCE LIGHT FIXTURE | | COMPACT FLUORESCENT RECESSED CAN LIGHT | | LOCALLY SWITCHED CLOSET RATED LIGHT | | MINIMUM 50 CFM VENT FAN | | CABLE JACK |
| | SWITCH | | CARBON MONOXIDE DETECTOR | | WET LOCATION WALL SCONCE LIGHT FIXTURE | | LED RECESSED CAN LIGHT | | | | | | CAT 5 JACK |
| | | | | | | | | | | | | | CENTRAL VACUUM PORT |



Proposed
 First Floor
 Power Plan

E1