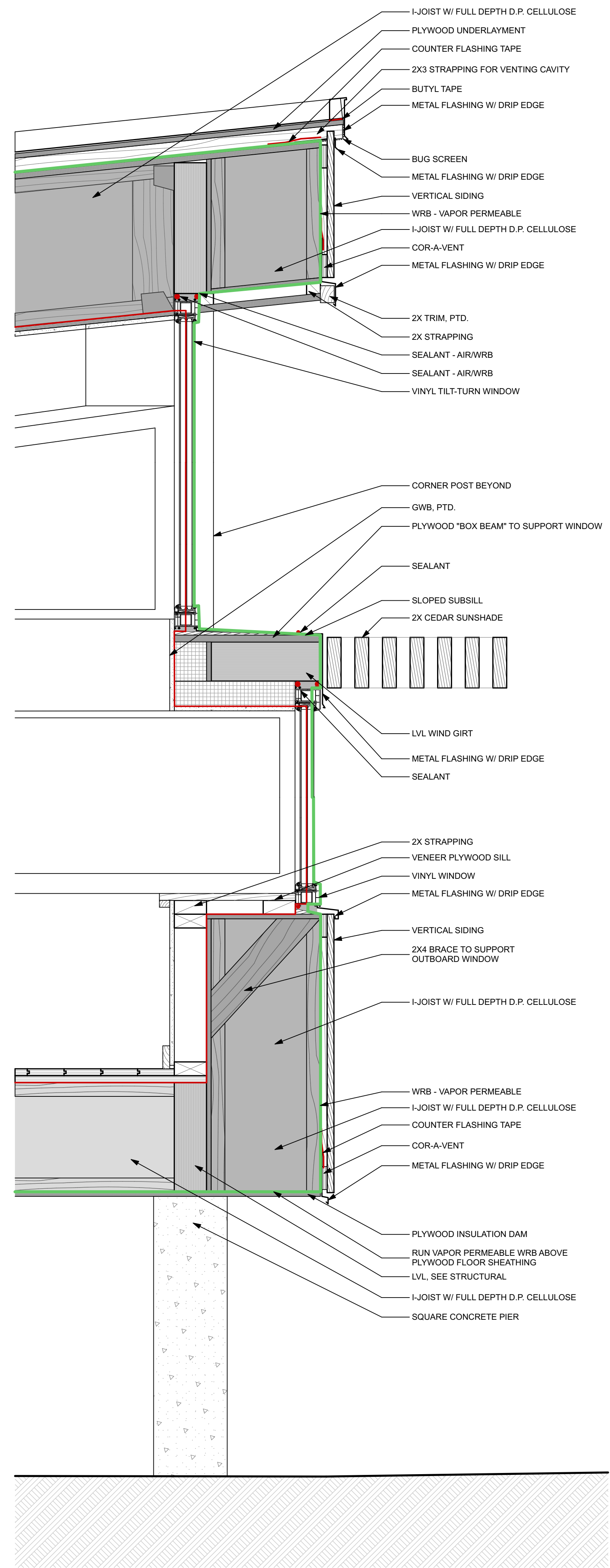
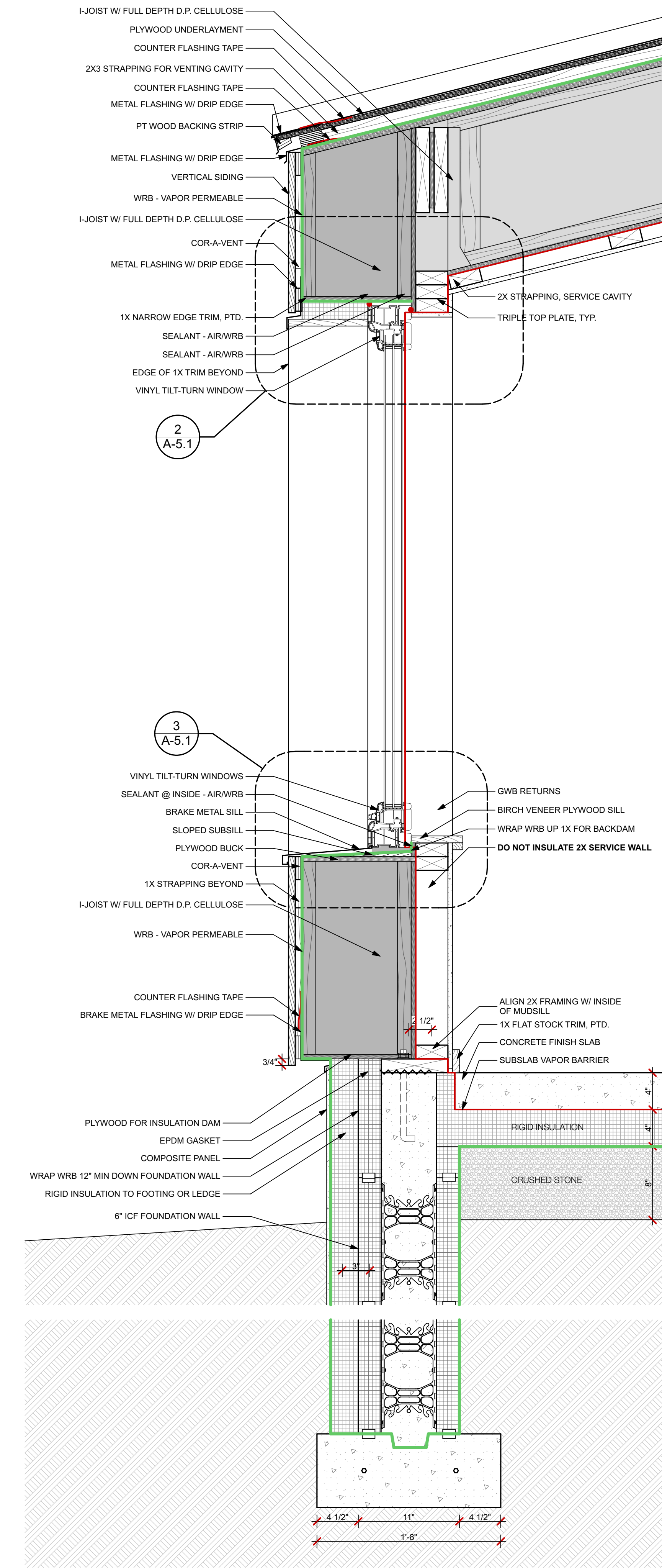


6 LIVING ROOM EAST WALL SECTION  
SCALE: 1 1/2" = 1'-0"



2 LIVING ROOM SOUTH WALL SECTION  
SCALE: 1 1/2" = 1'-0"



1 TYPICAL WALL SECTION  
SCALE: 1 1/2" = 1'-0"



FOR CONSTRUCTION  
PROJECT NO: STZ  
DATE: 6/21/16  
DRAWN BY: SDF  
PHASE: CONSTRUCTION DOCUMENTS