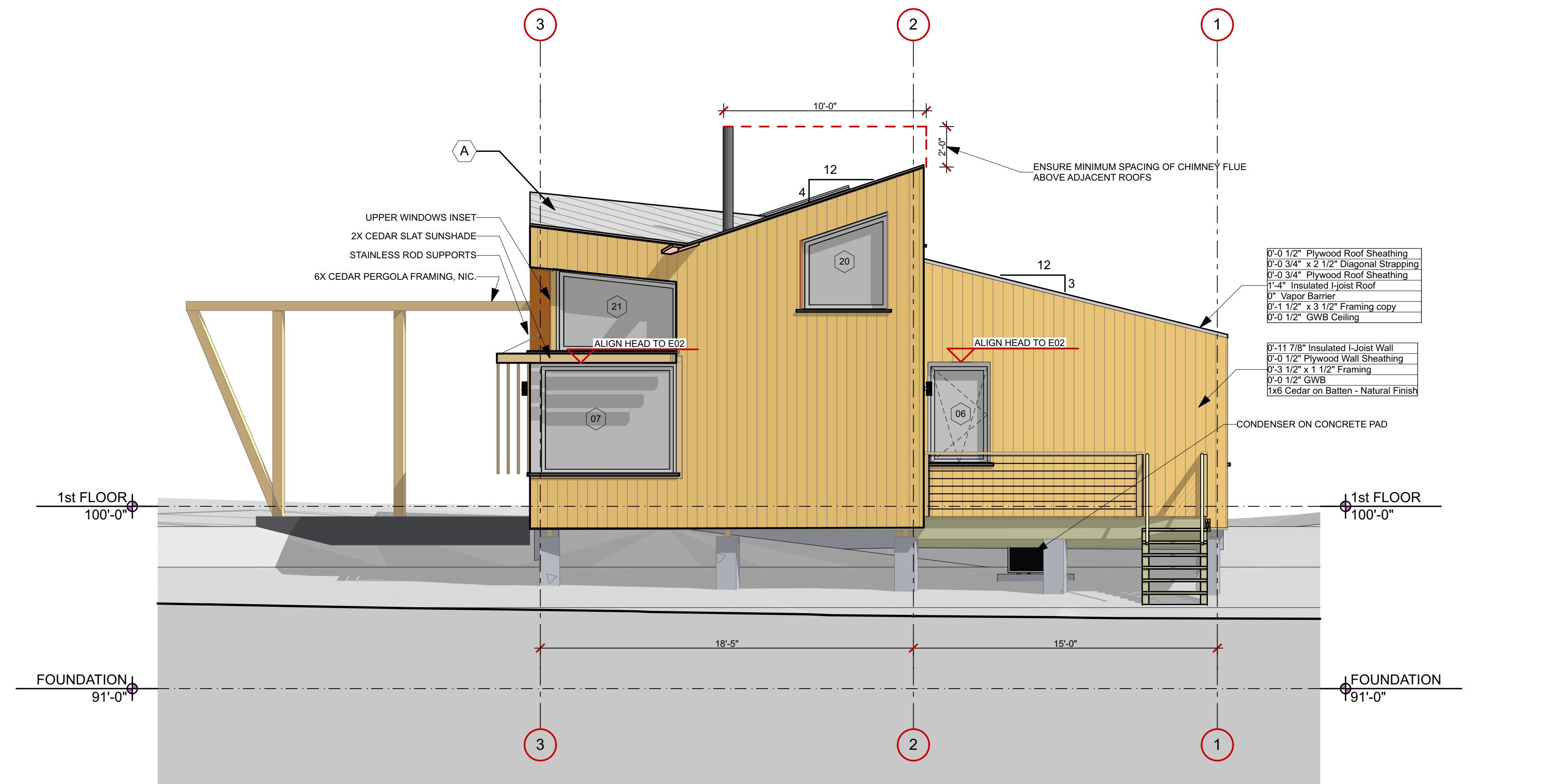
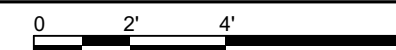


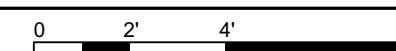
1 WEST ELEVATION

SCALE: 1/4" = 1'-0"



2 EAST ELEVATION

SCALE: 1/4" = 1'-0"



FOR CONSTRUCTION
PROJECT NO: STZ
DATE: 6/21/16
DRAWN BY: SDF
PHASE: CONSTRUCTION DOCUMENTS

E&W ELEVATIONS

A-2.2