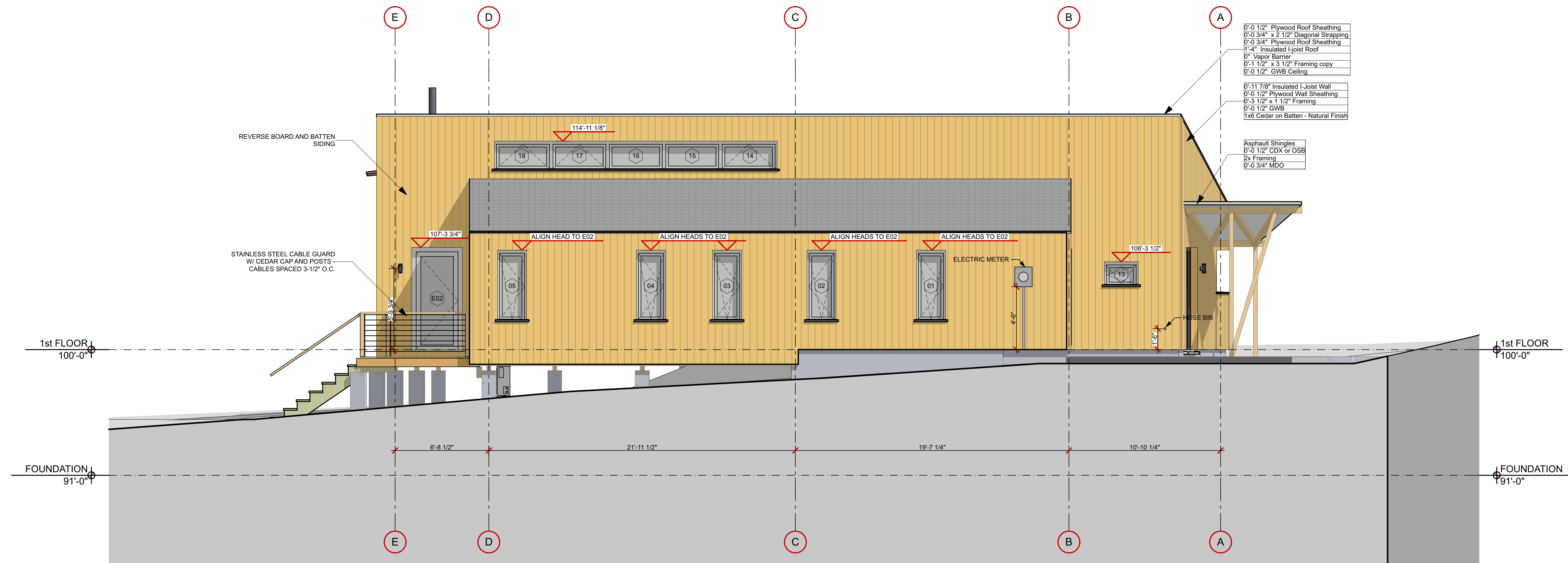
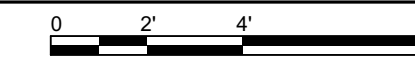
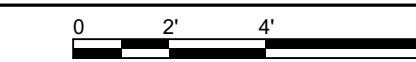


2 SOUTH ELEVATION
SCALE: 1/4" = 1'-0"



1 NORTH ELEVATION
SCALE: 1/4" = 1'-0"



FOR CONSTRUCTION
PROJECT NO: STZ
DATE: 6/24/16
DRAWN BY: SDF
PHASE: CONSTRUCTION DOCUMENTS

N&S ELEVATIONS

A-2.1