

CONTINUOUS AIR/VAPOR BARRIER ALWAYS TO INTERIOR OF THERMAL BARRIER

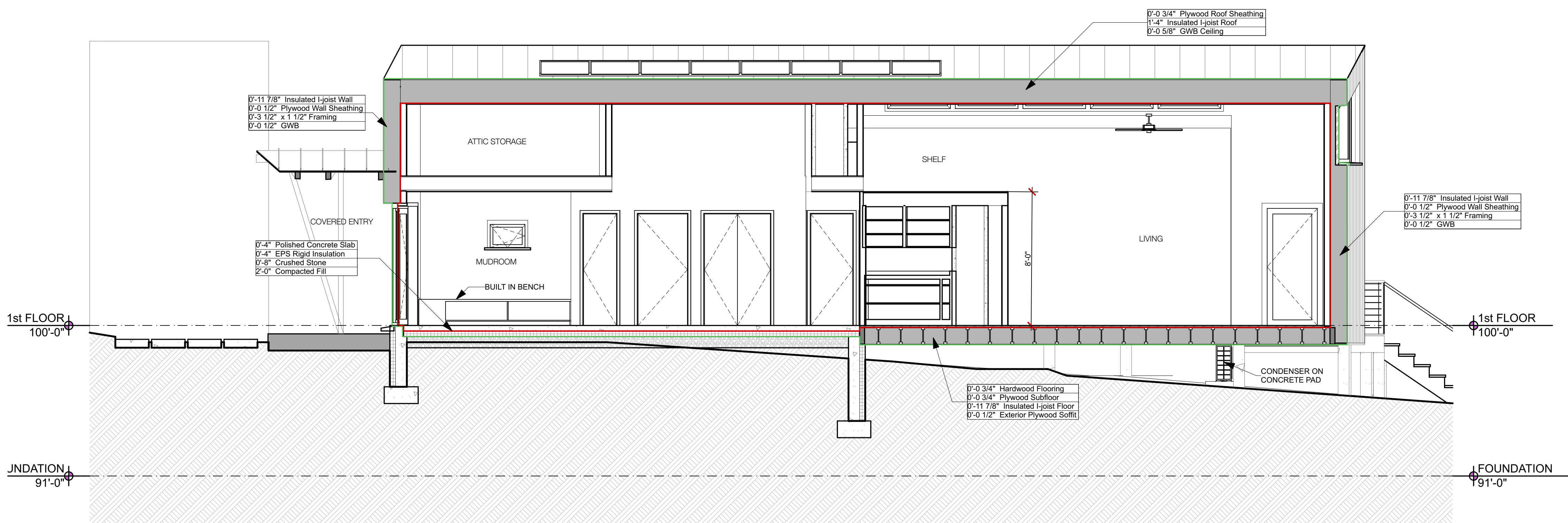
CONTINUOUS WEATHER RESISTIVE BARRIER

WALLS: 12" DENSE PACKED CELLULOSE @ R-3.8/INCH
 TOTAL R-VALUE = **R-45**

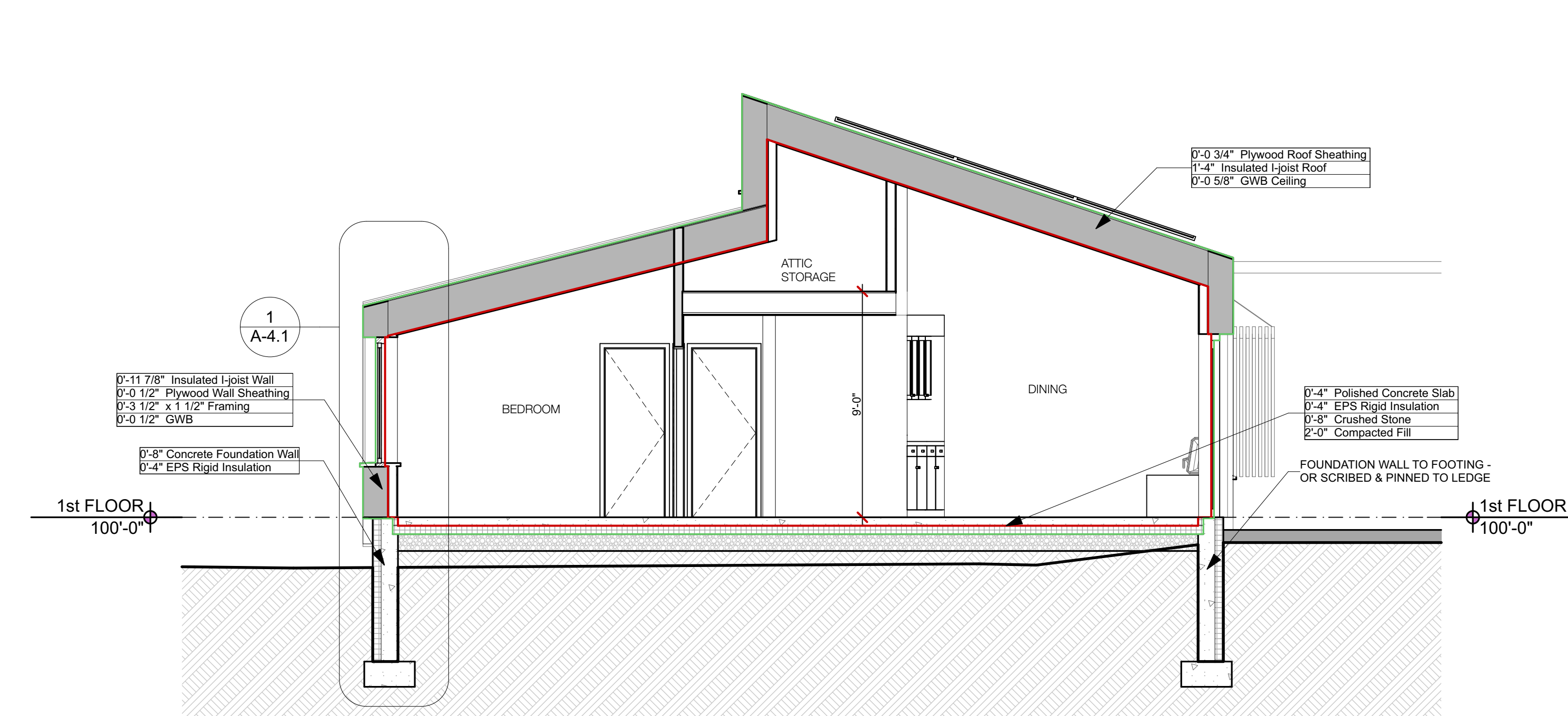
ROOF: 16" DENSE PACKED CELLULOSE @ R-3.8/INCH
 TOTAL R-VALUE = **R-60**

SLAB: 4" EPS RIGID INSULATION @ R-4.2/INCH
 TOTAL R-VALUE = **R-16**

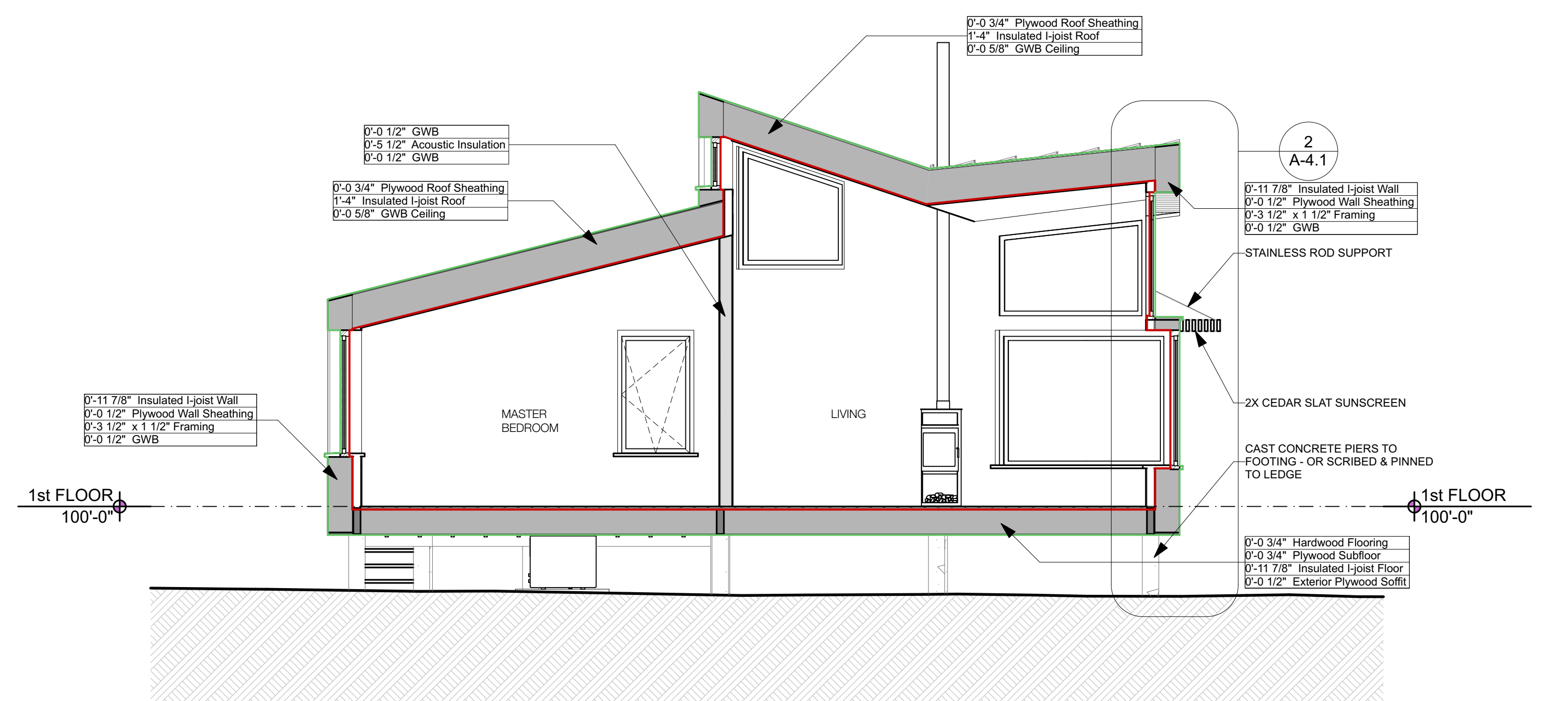
SUSPENDED FLOOR: 12" DENSE PACKED CELLULOSE @ R-3.8/INCH
 TOTAL R-VALUE = **R-45**



1 SECTION
 SCALE: 1/4" = 1'-0"
 0 2' 4' 8'



2 SECTION
 SCALE: 1/4" = 1'-0"
 0 2' 4' 8'



3 SECTION
 SCALE: 1/4" = 1'-0"
 0 2' 4' 8'

NO.	DATE	DESCRIPTION
1		

PROJECT NO: STZ
 DATE: 4/5/16
 DRAWN BY: SDF

BUILDING SECTIONS
A-3.1
 FOR PERMIT
 NOT FOR
 CONSTRUCTION