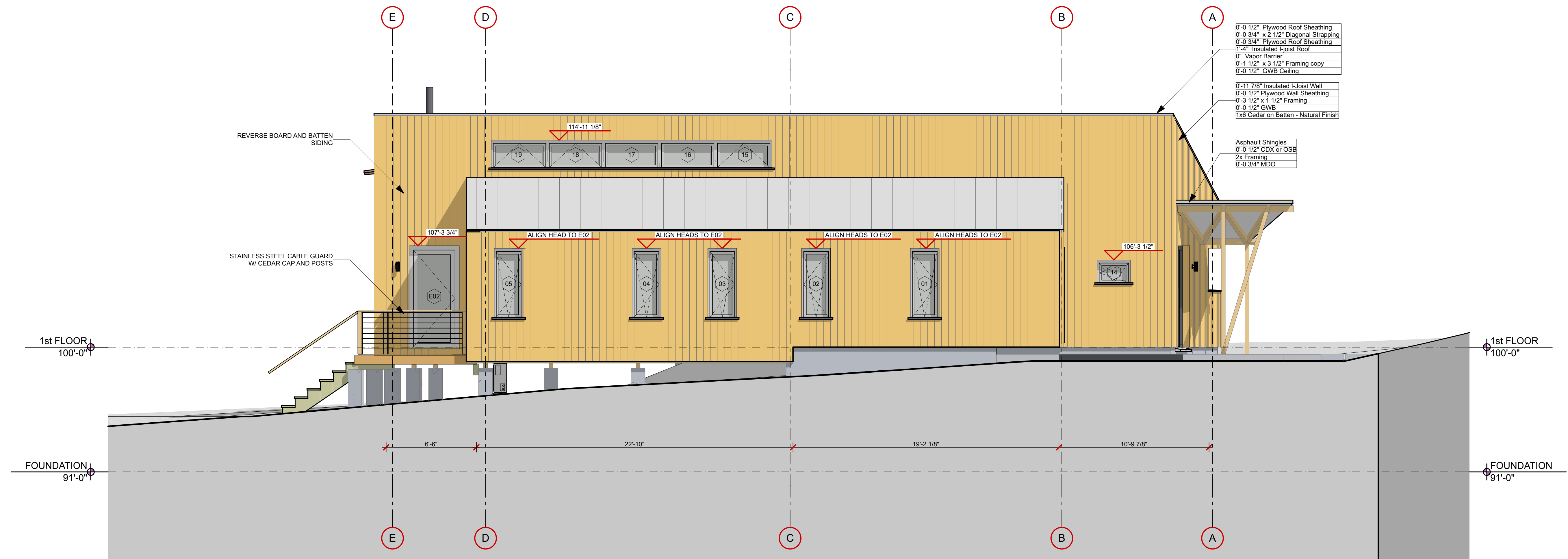


② SOUTH ELEVATION
 SCALE: 1/4" = 1'-0"



① NORTH ELEVATION
 SCALE: 1/4" = 1'-0"



FOR CONSTRUCTION
 PROJECT NO: STZ
 DATE: 6/21/16
 DRAWN BY: SDF
 PHASE: CONSTRUCTION DOCUMENTS