

ROB AND REBECCA BUNTON
TOLMAN HEIGHTS COTTAGE

LYNDON AVENUE
PEAKS ISLAND, MAINE 04108

JAMES W. GREENWELL, AIA, PLLC
ARCHITECT

130 ISLAND AVENUE
PEAKS ISLAND, ME 04108

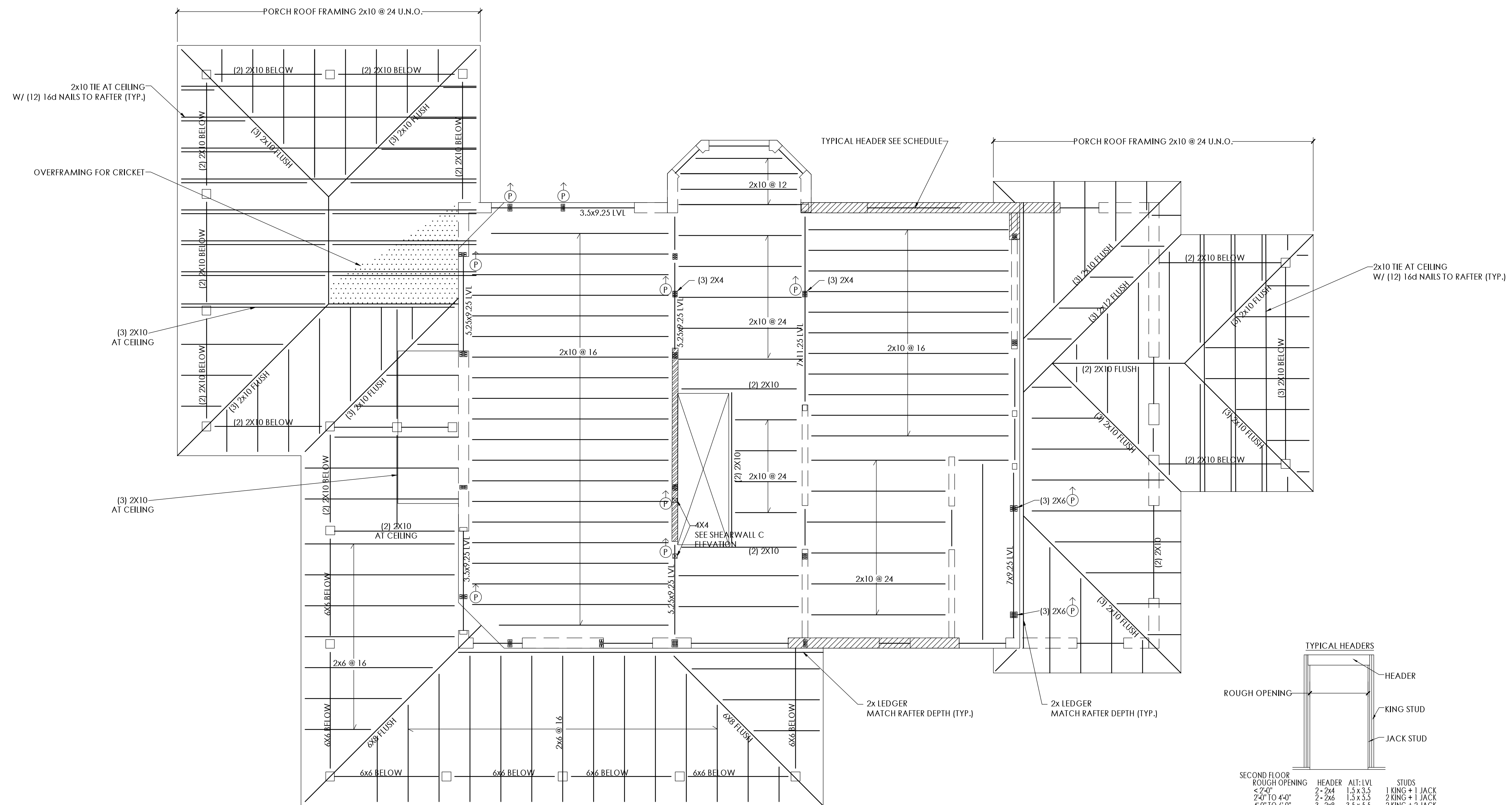
VOICE 207-766-2509
CELL 202-607-8976

MAINE REGISTERED ARCHITECT

ANDREW M. JACKSON, P.E.
JACKSON ENGINEERING
11 LUTHER STREET
PEAKS ISLAND, ME 04108
207-200-6106
JXENGINEERING.COM

professional seal

consultants



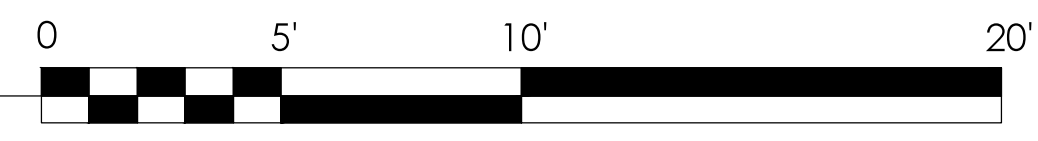
TYPICAL HEADERS

ROUGH OPENING	HEADER	ALT: LVL	STUDS
SECOND FLOOR			
ROUGH OPENING < 2'-0"	2-2x4	1.5 x 3.5	1 KING + 1 JACK
2'-0" TO 4'-0"	2-2x6	1.5 x 5.5	2 KING + 1 JACK
4'-0" TO 6'-0"	3-2x6	3.5 x 5.5	2 KING + 2 JACK
6'-0" TO 8'-0"	3-2x12	3.5 x 7.25	2 KING + 2 JACK
FIRST FLOOR			
ROUGH OPENING < 2'-0"	2-2x6	1.5 x 5.5	1 KING + 1 JACK
2'-0" TO 4'-0"	2-2x10	3.5 x 5.5	2 KING + 2 JACK
4'-0" TO 6'-0"	4-2x10	3.5 x 7.25	2 KING + 2 JACK
6'-0" TO 8'-0"	4-2x12	3.5 x 9.25	2 KING + 3 JACK

NOTE:
ALL FRAMING NOT LABELED TO BE 2x10, TYP.
ALL POSTS NOT LABELED TO BE (2) 2x4 OR (2) 2x6 (MATCH WALL STUD DEPTH)

1
SCALE: 1/8" = 1'-0"

SECOND FLOOR FRAMING PLAN



DATE: SEPTEMBER 4, 2013

SCALE: 1/4" = 1'-0"

SECOND FLOOR FRAMING PLAN

S1.2