

ROBERT C. AND  
REBECCA R. BUNTON  
TOLMAN HEIGHTS COTTAGE  
  
105 LYNDON AVENUE  
PEAKS ISLAND, MAINE 04108

JAMES W. GREENWELL, AIA, PLLC  
ARCHITECT

130 ISLAND AVENUE  
PEAKS ISLAND, ME 04108

VOICE 207-766-2509  
CELL 202-607-8976

MAINE REGISTERED ARCHITECT

professional seal

consultants

ISSUE DATE

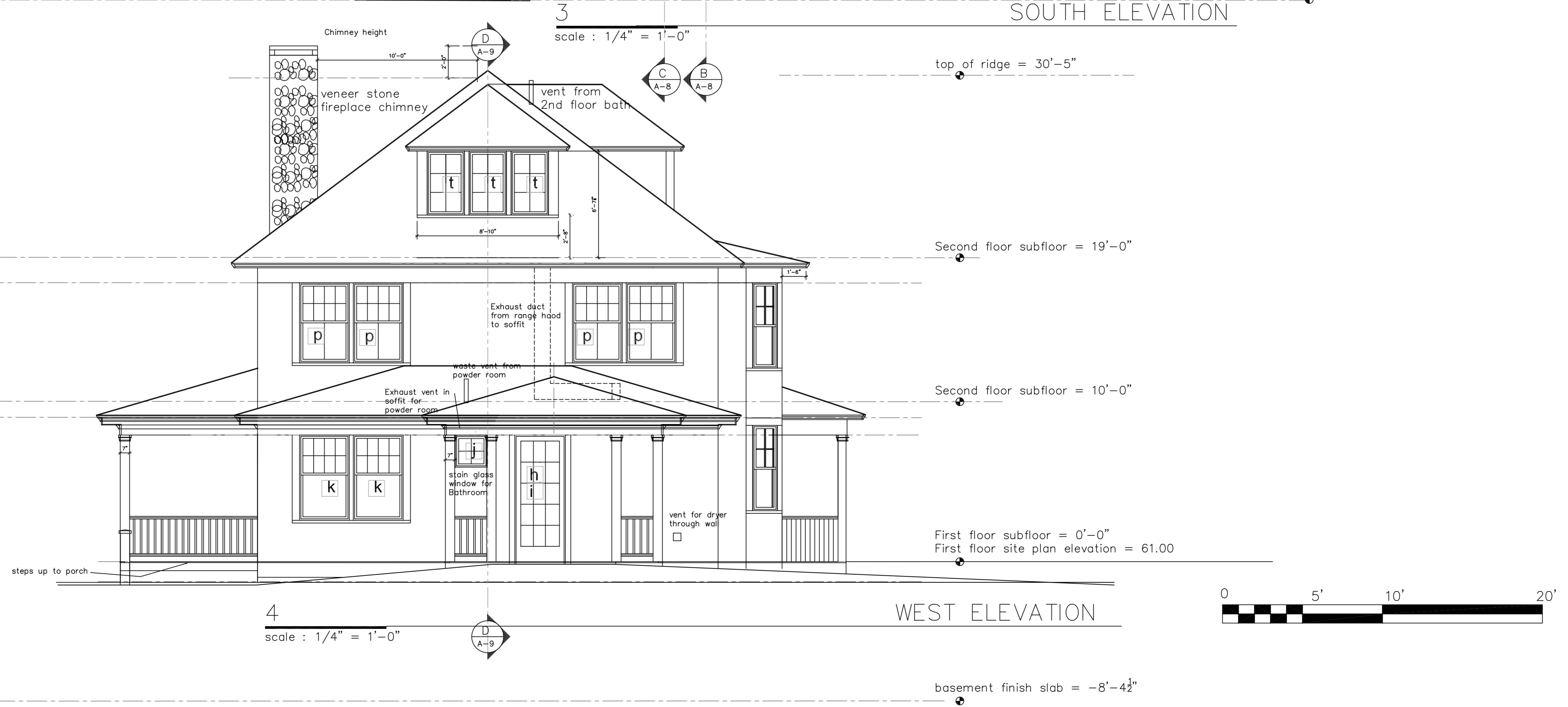
PERMITS Sept 4, 2013

DATE: SEPT 4, 2013  
SCALE: 1/4" = 1'-0"  
south and west  
elevations

A-7



SOUTH ELEVATION



WEST ELEVATION