

professional seal

consultants

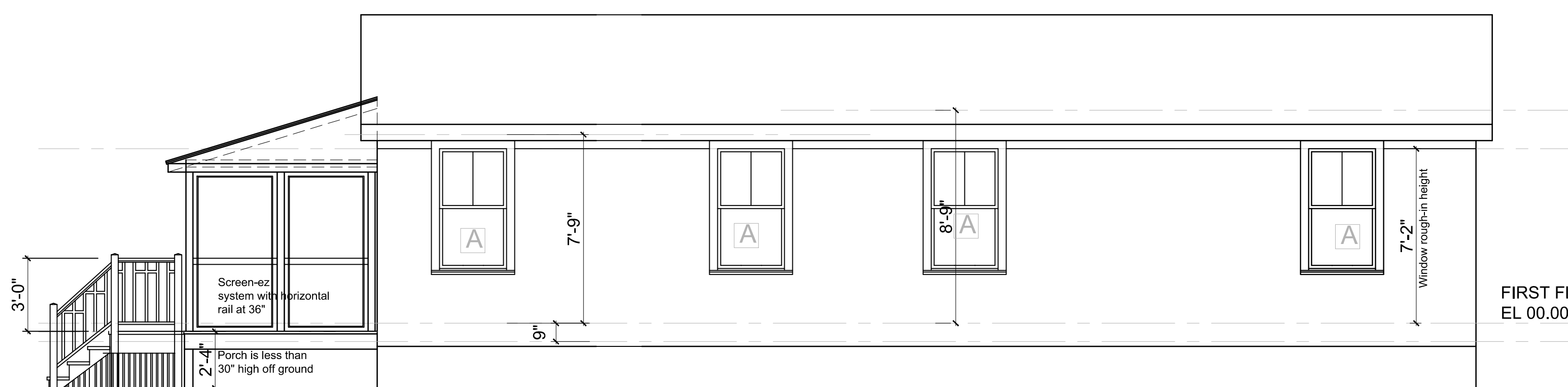
ISSUE DATE

Permits 9-26-16

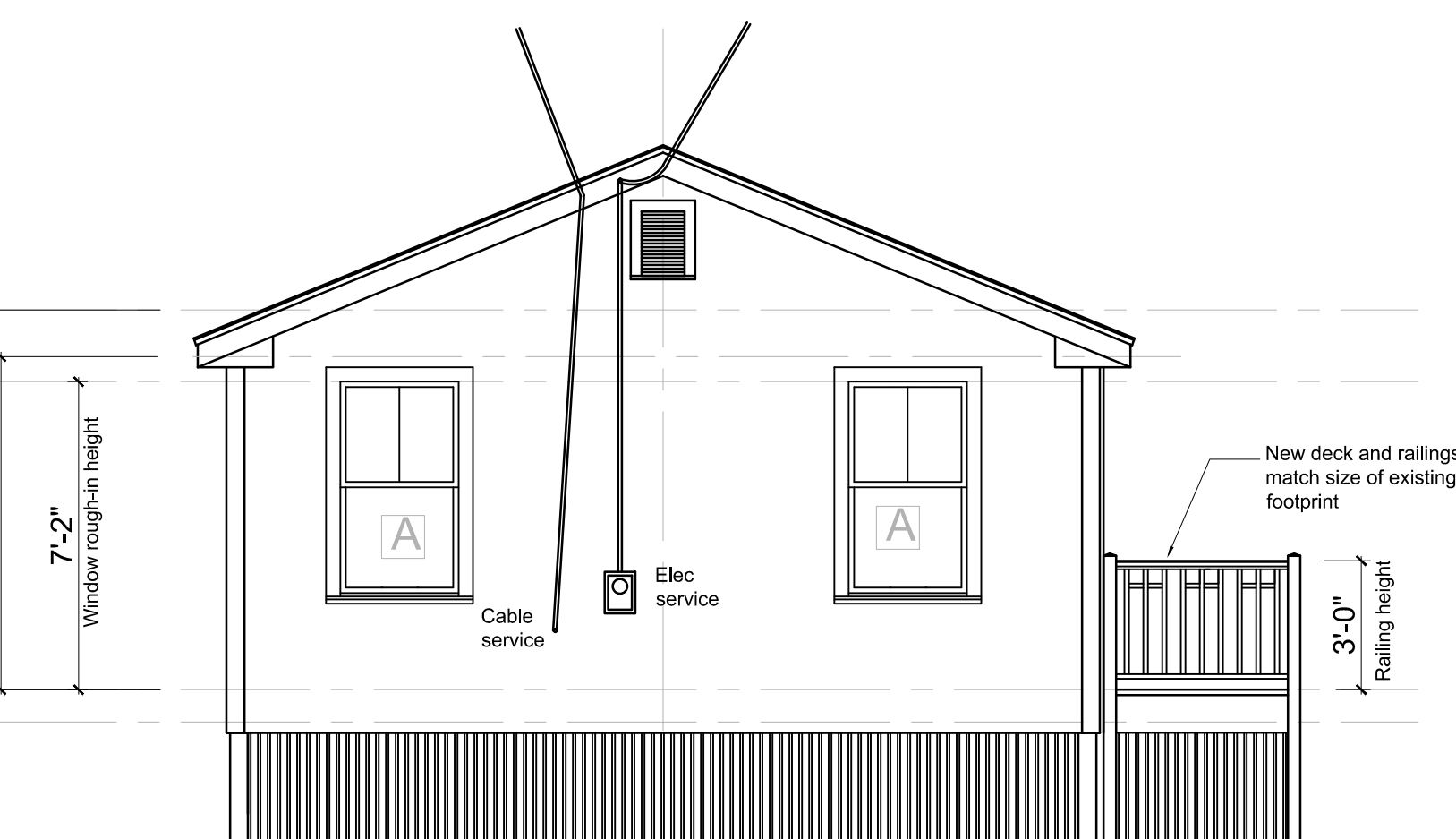
SCALE: 1/4" = 1'-0"

Elevations
and Sections showing
new windows

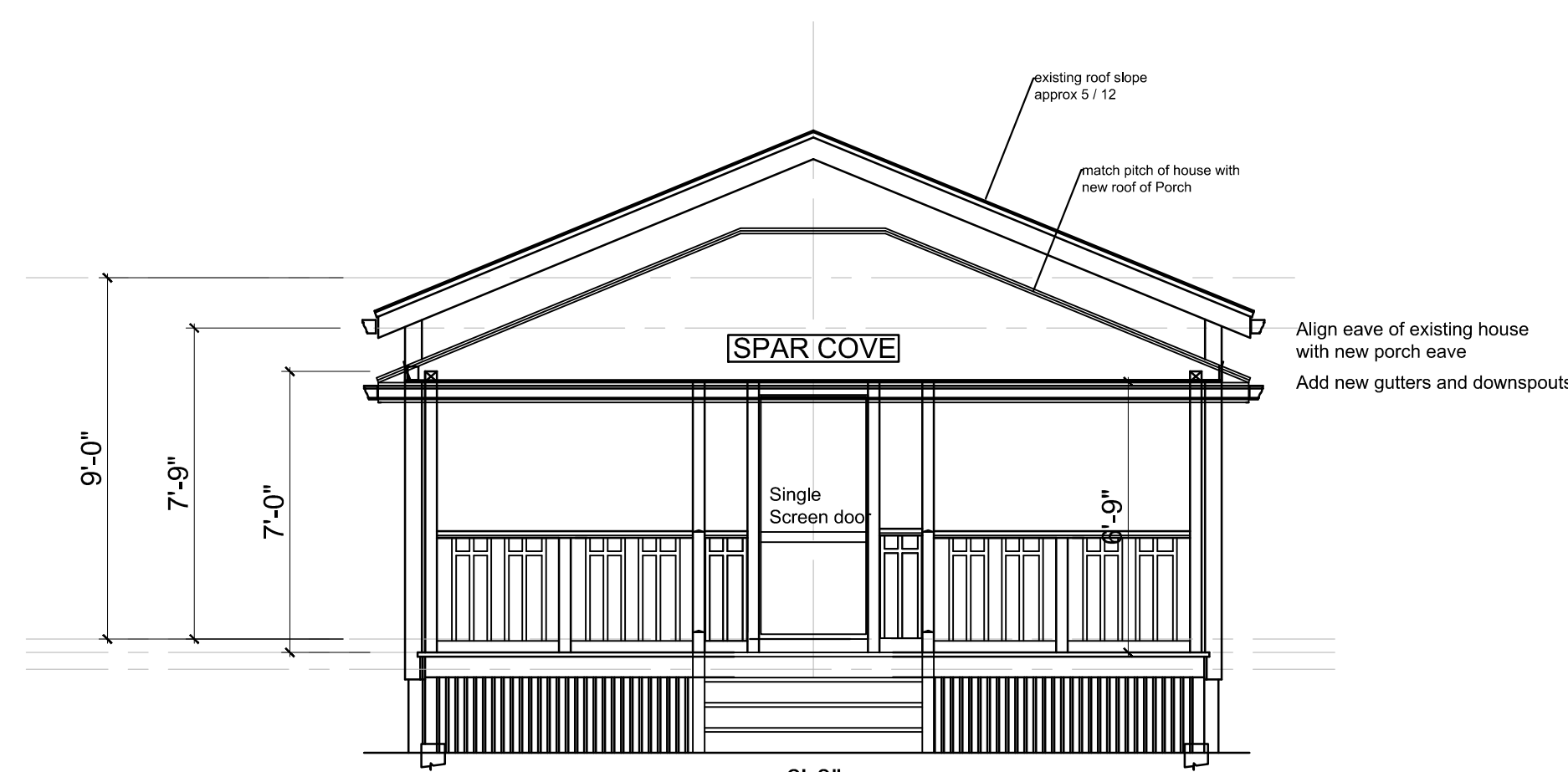
A .5



NORTH ELEVATION



WEST ELEVATION



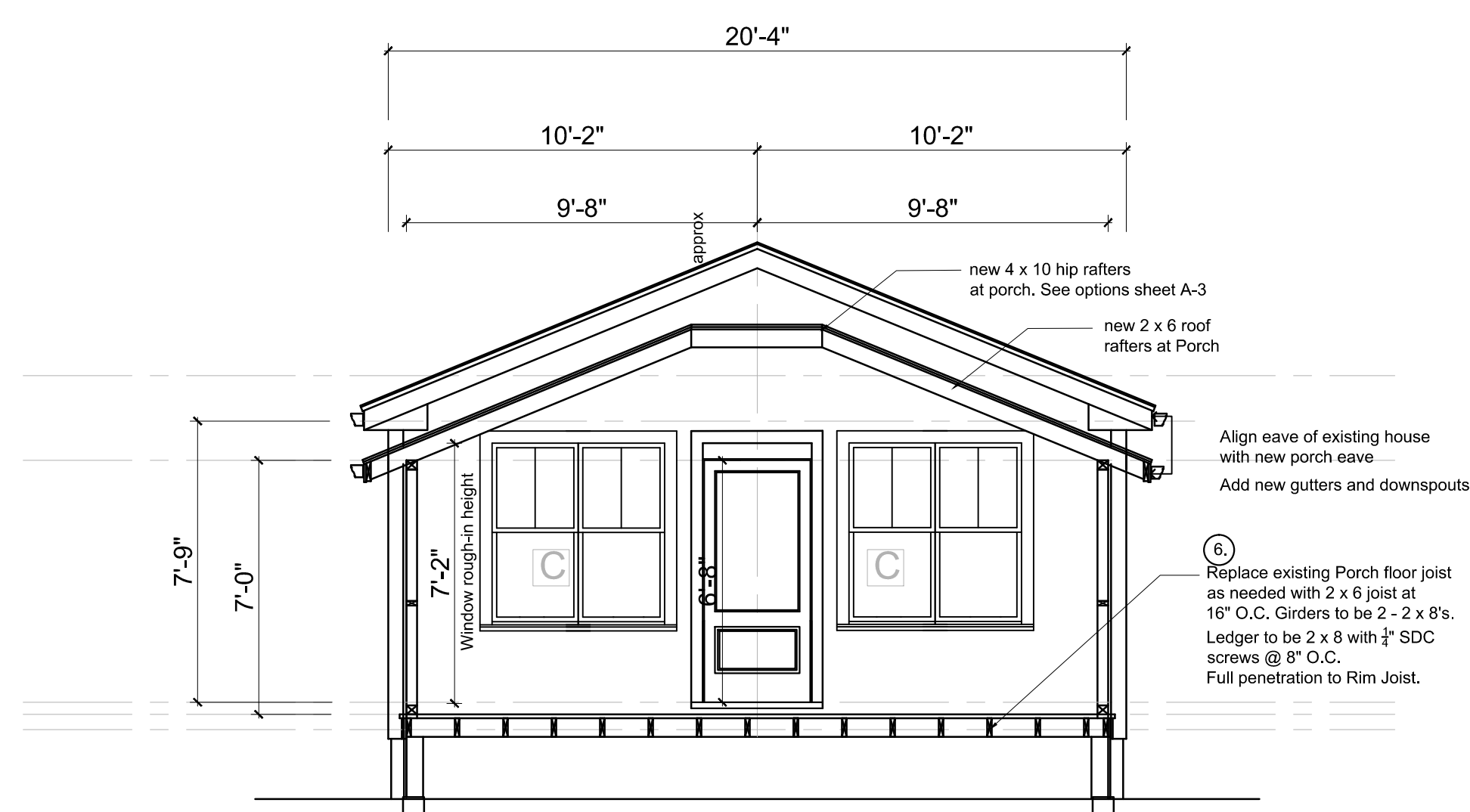
EAST ELEVATION AT PORCH

scale : 1/4" = 1'-0"



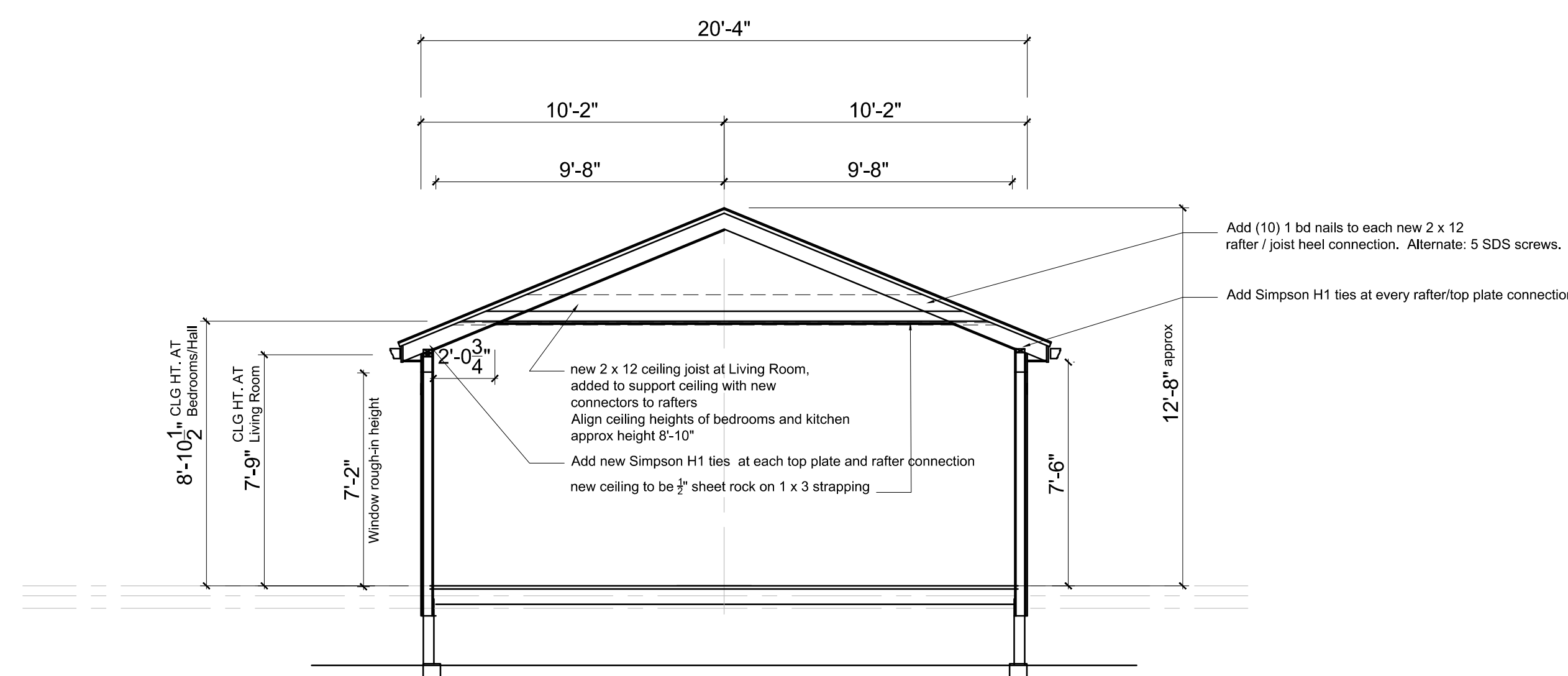
SOUTH ELEVATION AND SIDE PORCH

scale : 1/4" = 1'-0"



SECTION / EAST ELEVATION AT PORCH

scale : 1/4" = 1'-0"



SECTION AT HOUSE

scale : 1/4" = 1'-0"

scale : 1/4" = 1'-0"

