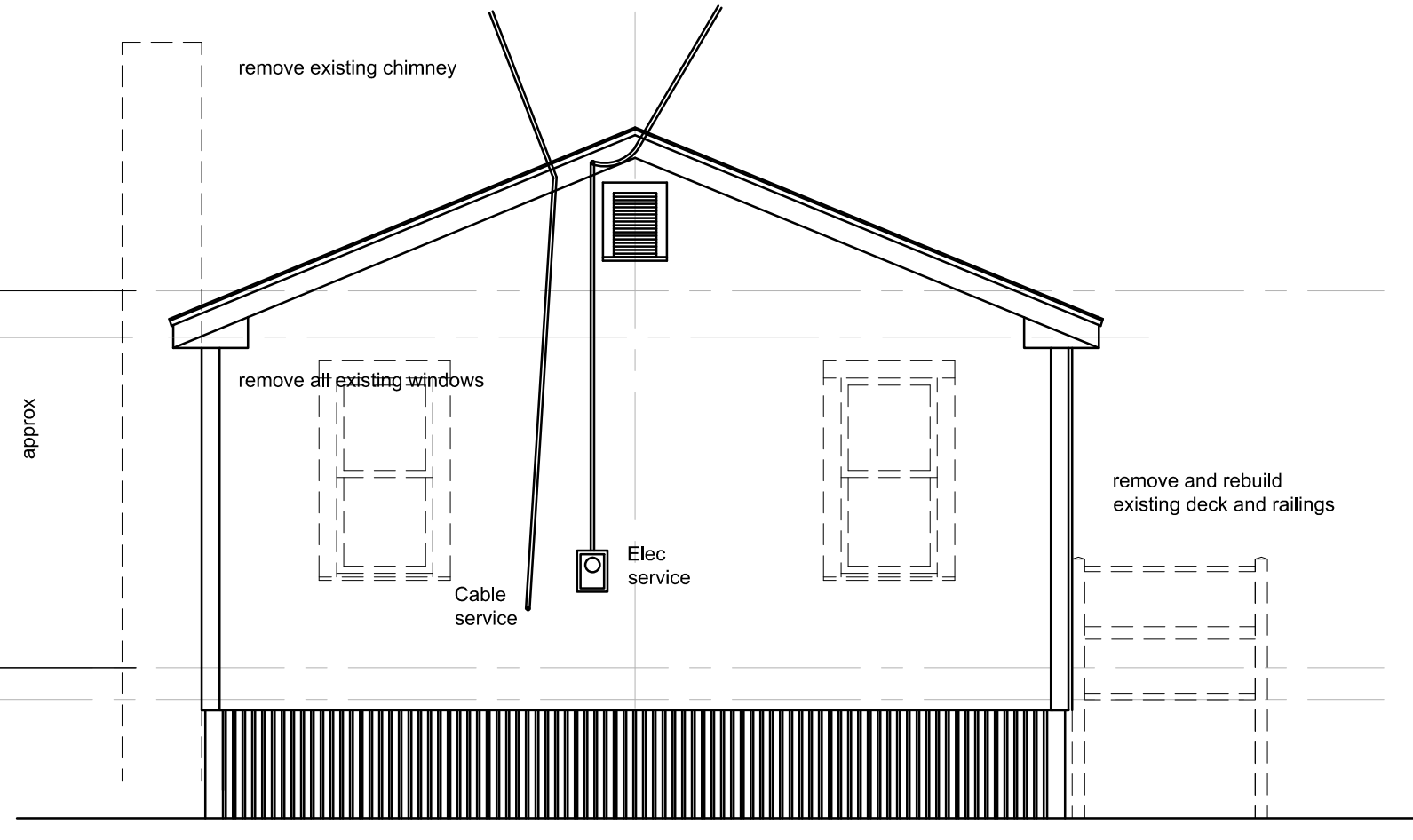
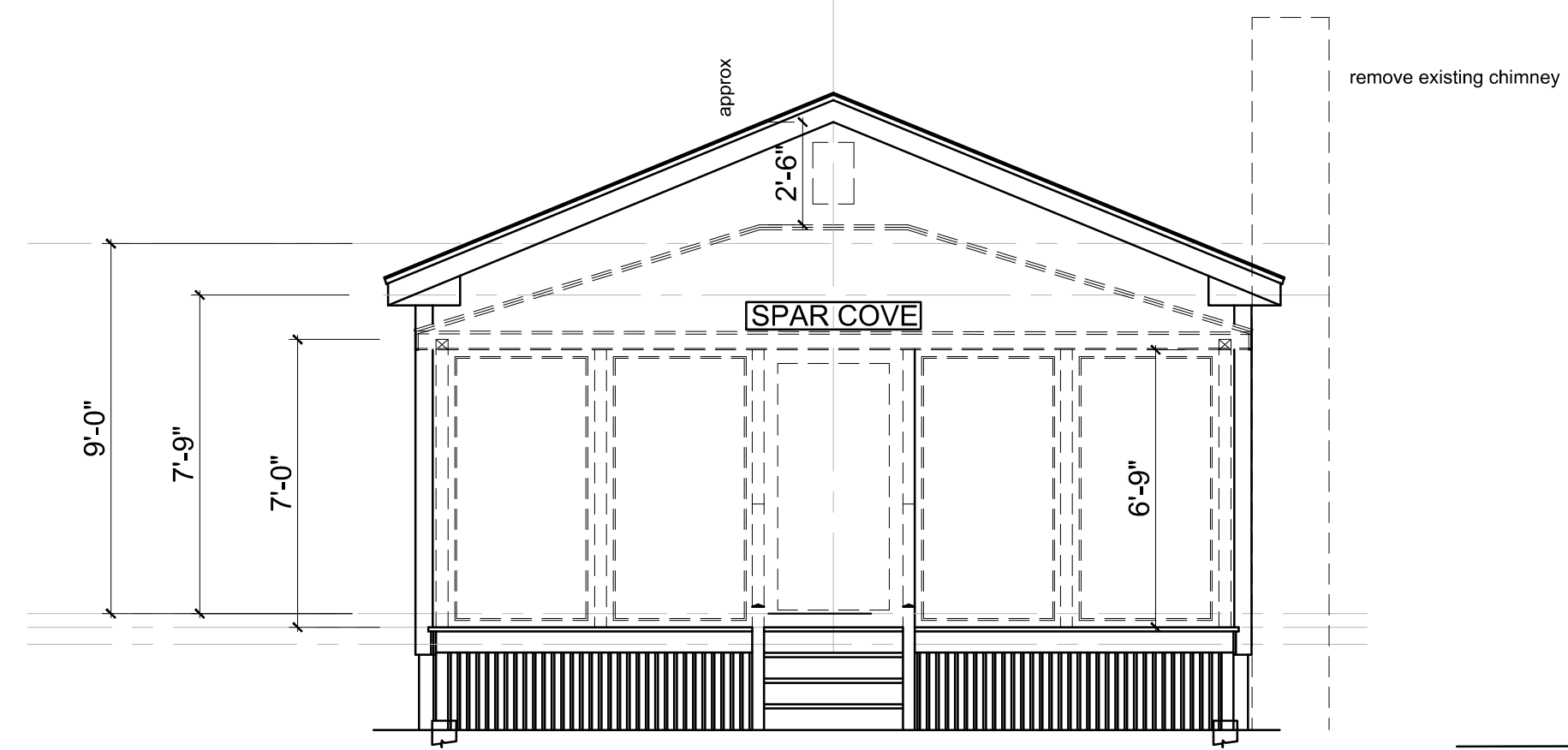


NORTH ELEVATION
scale : 1/4" = 1'-0"

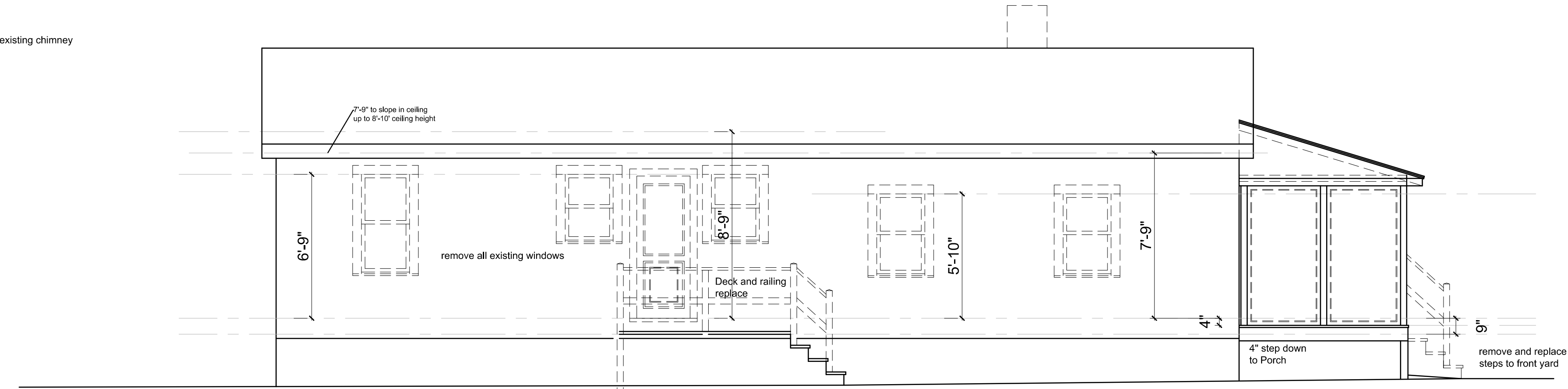


WEST ELEVATION
scale : 1/4" = 1'-0"

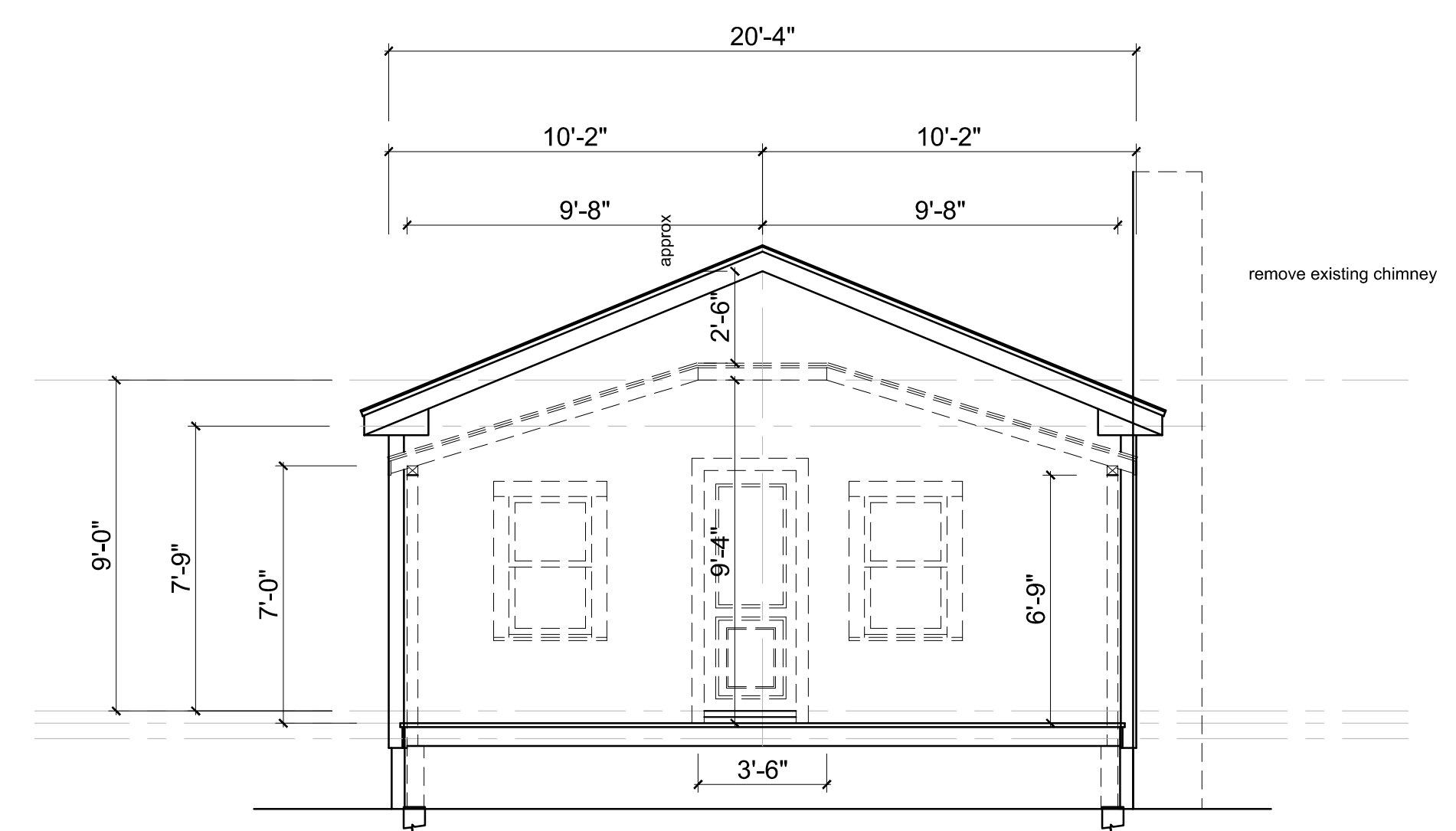
FIRST FLOOR
EL 00.00



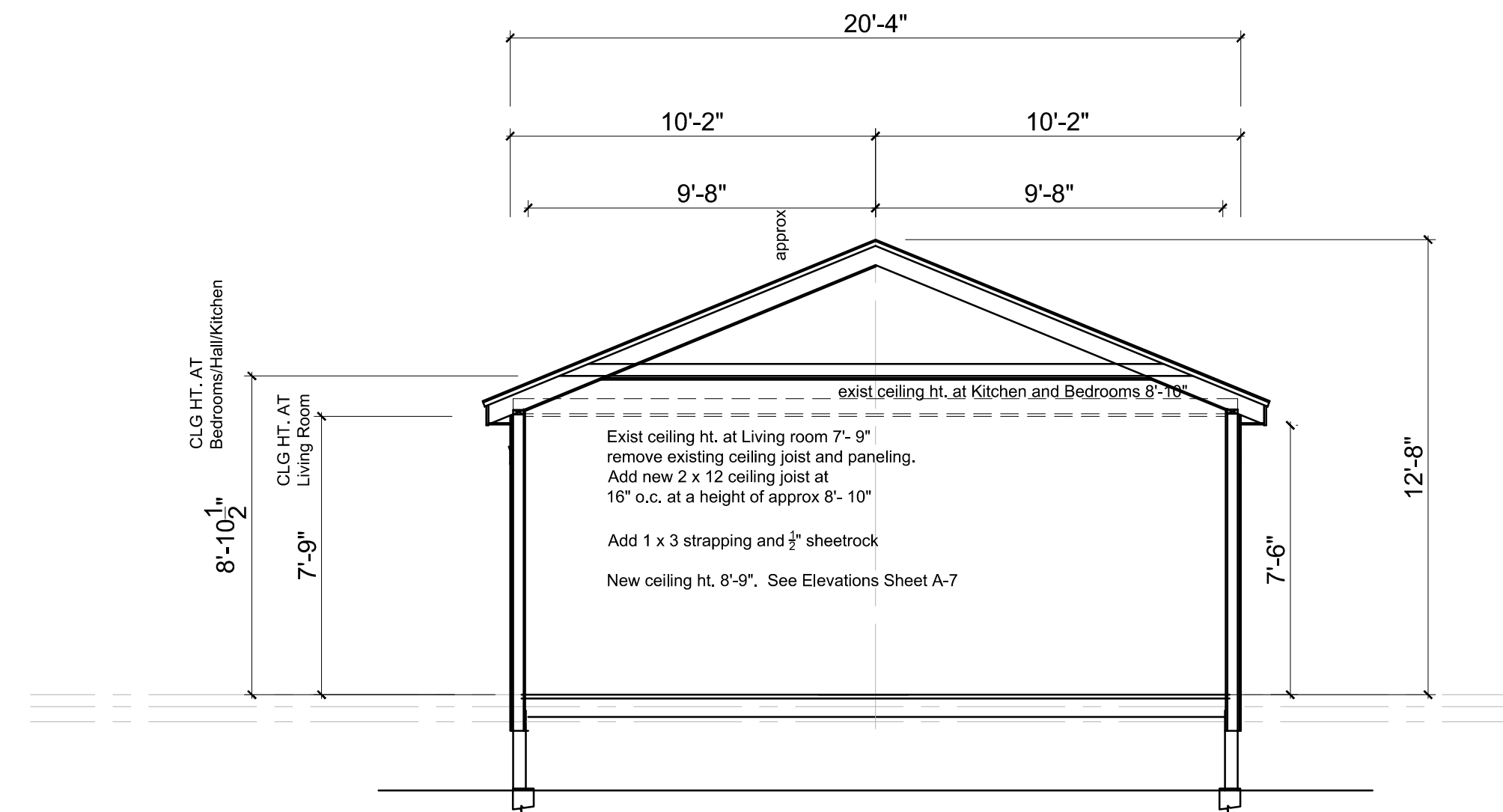
EAST ELEVATION AT PORCH
scale : 1/4" = 1'-0"



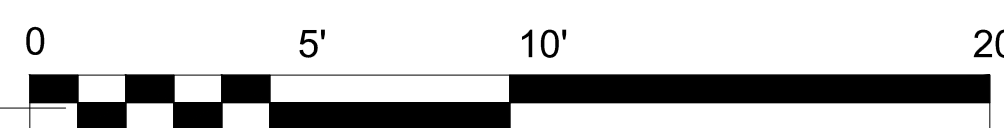
SOUTH ELEVATION AND SIDE PORCH
scale : 1/4" = 1'-0"



SECTION / ELEVATION AT PORCH
scale : 1/4" = 1'-0"



SECTION AT HOUSE
scale : 1/4" = 1'-0"



scale : 1/4" = 1'-0"

BUNTON-PERKINS COTTAGE
Catherine Bunton and Kristine Perkins

790 SEASHORE AVENUE
PEAKS ISLAND, MAINE 04108

JAMES W. GREENWELL, AIA, PLLC
ARCHITECT

130 ISLAND AVENUE
PEAKS ISLAND, ME 04108

VOICE 207-766-2509
CELL 202-607-8976



professional seal

consultants

ISSUE DATE

Permits 9-26-2016

SCALE: 1/4" = 1'-0"

Demolition - Elevations

A . 4