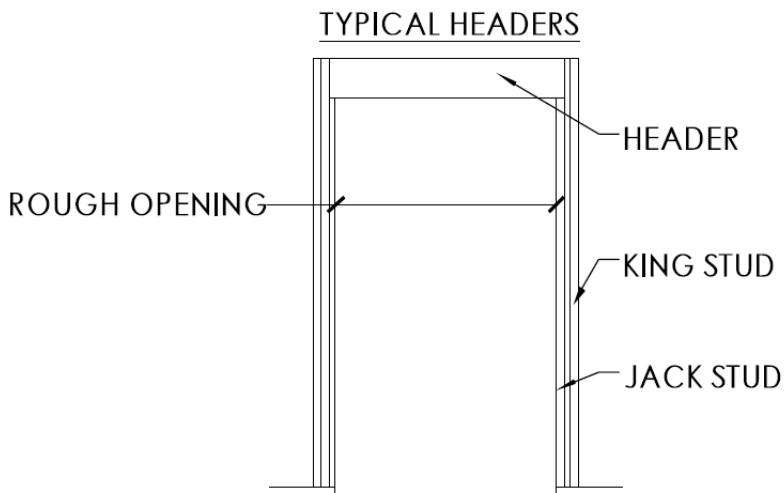
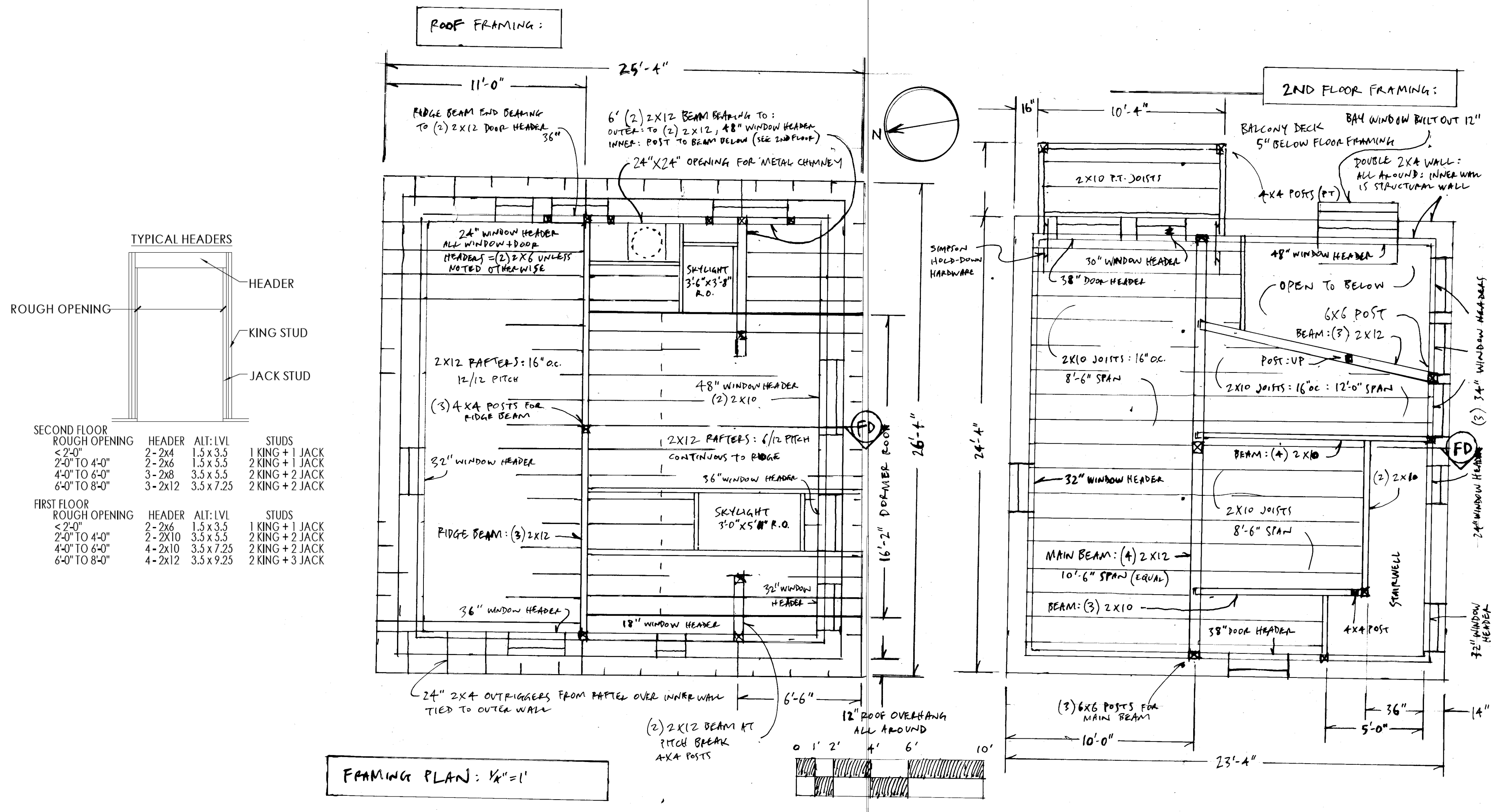




11 LUTHER STREET
PEAKS ISLAND, ME 04108
207-332-1421

DATE	NOTES
2016.05.09	REVISED



SECOND FLOOR			
ROUGH OPENING	HEADER	ALT: LVL	STUDS
< 2'-0"	2-2x4	1.5 x 3.5	1 KING + 1 JACK
2'-0" TO 4'-0"	2-2x6	1.5 x 5.5	2 KING + 1 JACK
4'-0" TO 6'-0"	3-2x8	3.5 x 5.5	2 KING + 2 JACK
6'-0" TO 8'-0"	3-2x12	3.5 x 7.25	2 KING + 2 JACK

FIRST FLOOR			
ROUGH OPENING	HEADER	ALT: LVL	STUDS
< 2'-0"	2-2x6	1.5 x 3.5	1 KING + 1 JACK
2'-0" TO 4'-0"	2-2x10	3.5 x 5.5	2 KING + 2 JACK
4'-0" TO 6'-0"	4-2x10	3.5 x 7.25	2 KING + 2 JACK
6'-0" TO 8'-0"	4-2x12	3.5 x 9.25	2 KING + 3 JACK

PROJECT
Mantsch Residence
0 Central Ave. (Park Ave.)
Peaks Island, ME
04108

S2
PROPOSED FRAMING
PLANS