



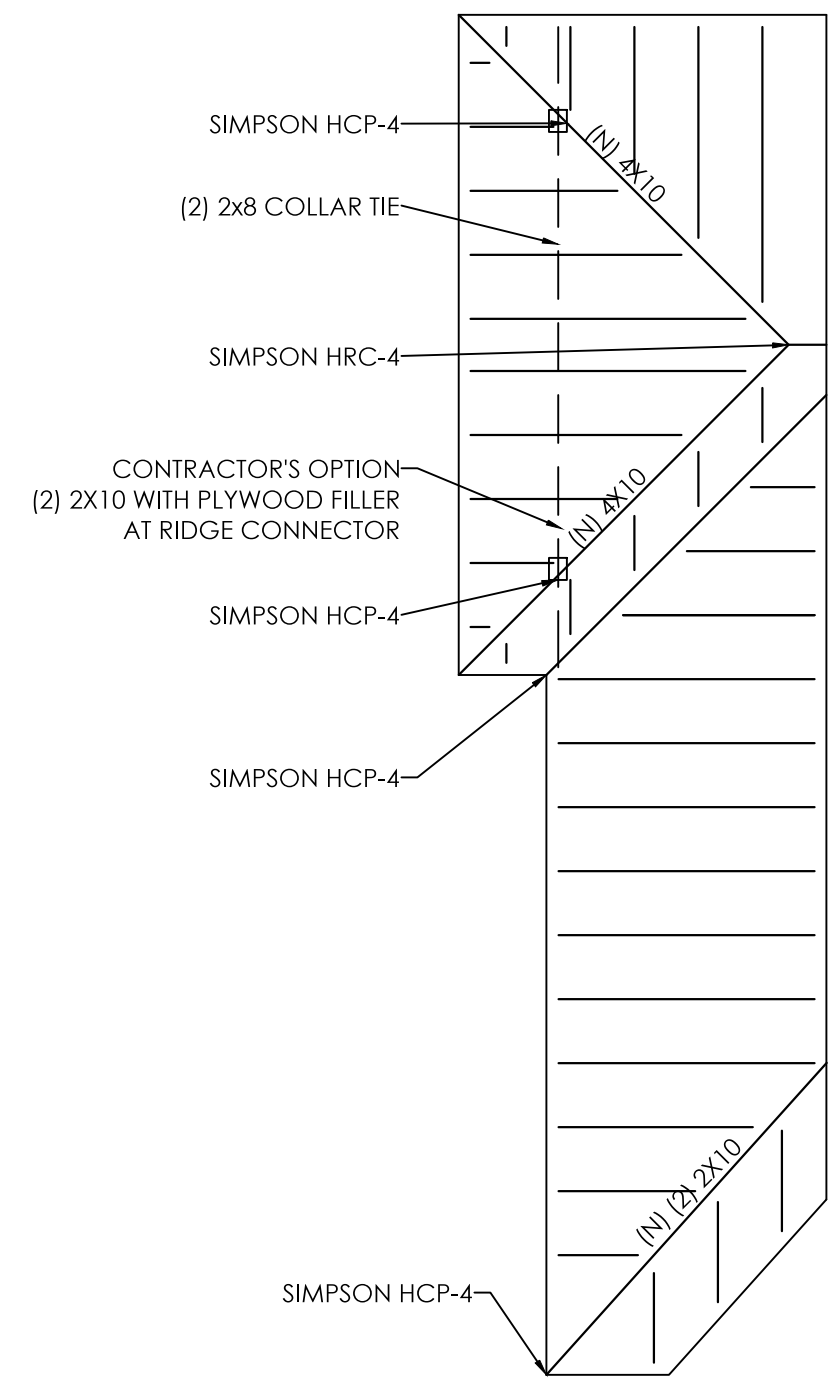
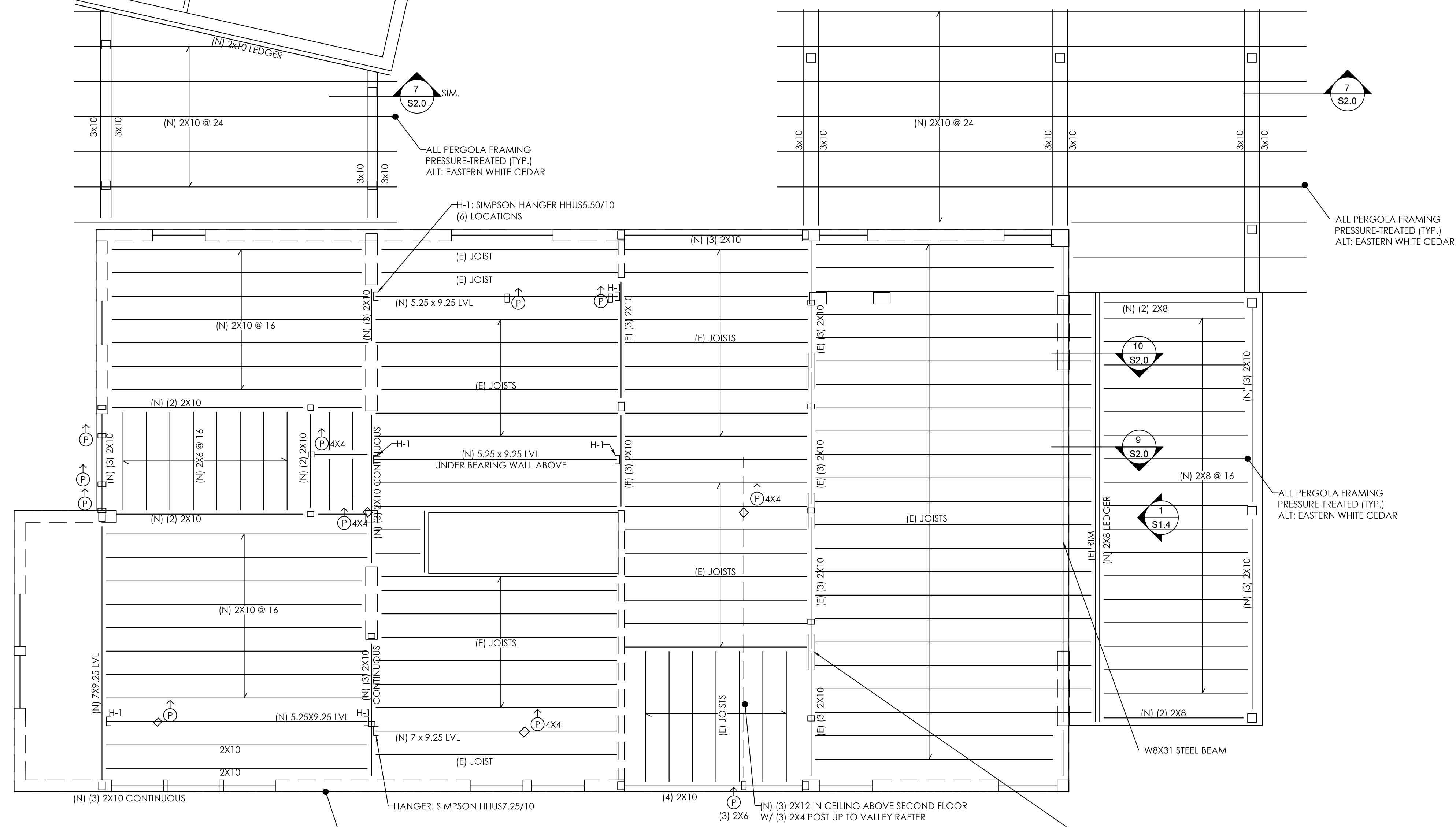
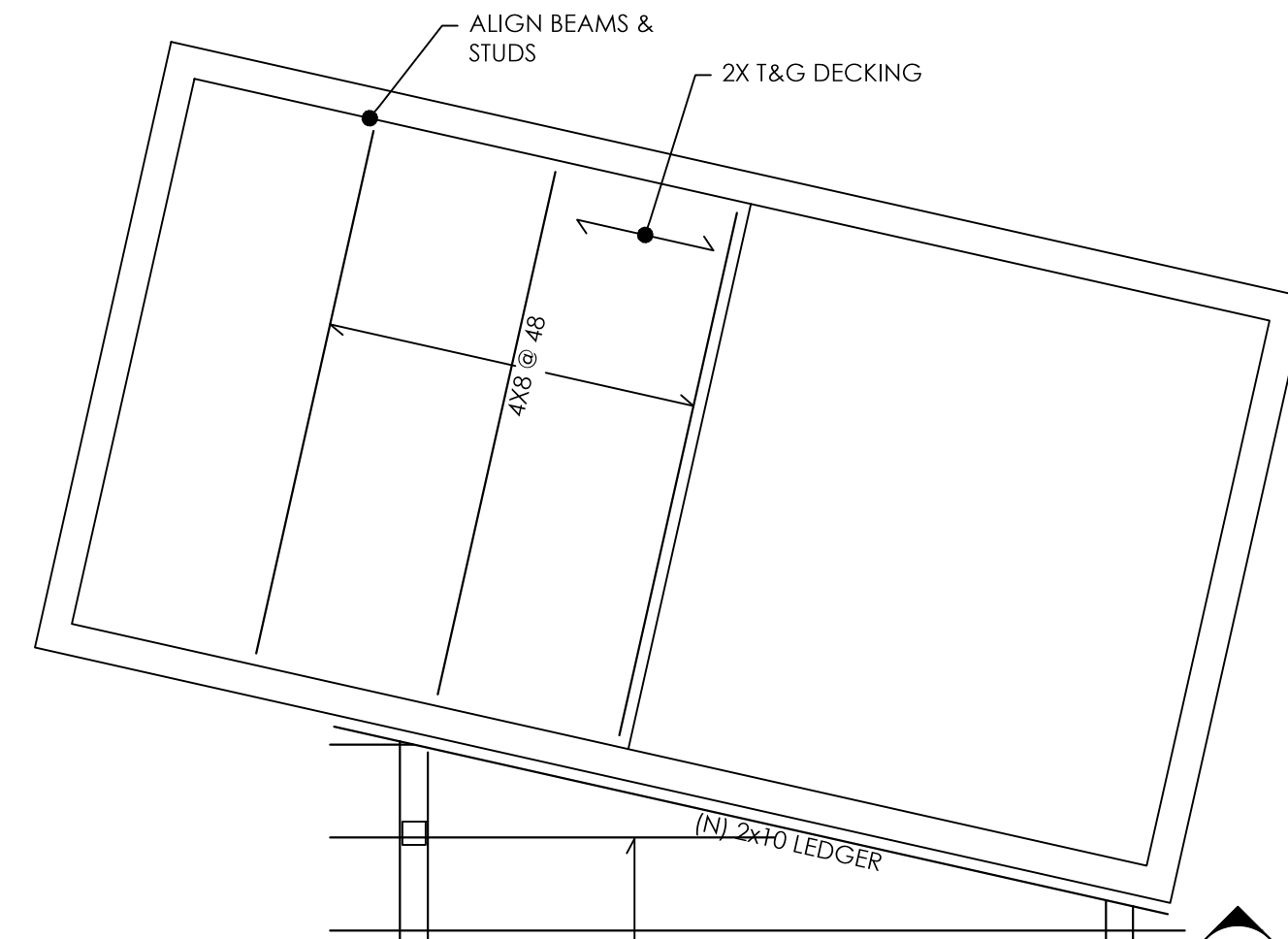
professional seal

ANDREW M. JACKSON, P.E.
JACKSON ENGINEERING
11 LUTHER STREET
PEAKS ISLAND, ME 04108
207-200-6106
JXENGINEERING.COM

consultants

SILL PLATE TO FOUNDATION	1/2" ANCHOR BOLT @ 36" O.C. W/ 3" PLATE WASHER; 9" MIN. EMBEDMENT	BAND / RIM JOIST TO JOIST	3 - 16d (ENDNAILED)
ROOF SHEATHING TO RAFTERS	8d @ 6" O.C. EDGE / 12" O.C. FIELD (TYPICAL PANELS) 8d @ 6" O.C. EDGE / 6" O.C. FIELD (PERIMETER PANELS)	RIM JOIST TO SILL / TOP PLATE	2 - 16d PER FOOT
WALL SHEATHING	8d @ 6" O.C. EDGE / 12" O.C. FIELD	TOP PLATE TO TOP PLATE	2 - 16d PER FOOT
FLOOR SHEATHING	12d RING OR SPIRAL NAILS @ 6" O.C. EDGE / 12" O.C. FIELD	TOP PLATES AT INTERSECTION	4 - 16d EACH SIDE
POST BASES ON CONCRETE	SEE PLAN	STUD TO STUD	1 - 16d @ 12" O.C.
POST CAPS	SIMPSON BC OR LC (MATCH POST SIZE)	HEADER TO HEADER	16d @ 16" O.C. ALONG EDGES
SLOPED/SKEWED RAFTER HANGERS AT RIDGE/HIP BEAMS	SIMPSON LSU	TOP OR BOTTOM PLATE TO STUD	2 - 16d
JOIST HANGERS	SIMPSON LUS (MATCH JOIST SIZE)	BOTTOM PLATE TO FLOOR JOIST, RIM JOIST, END JOIST, OR BLOCKING	2 - 16d PER FOOT
JOIST BEARING ON SILL, TOP PLATE, OR BEAM	4 - 8d (TOENAILED)	RAFTER TO TOP PLATE	RAFTER SPACING UP TO 16": 2 - 8d (TOENAILED) RAFTER SPACING 24": 3 - 8d (TOENAILED)
BRIDGING / BLOCKING TO JOIST	2 - 8d (TOENAILED)	CEILING JOIST TO TOP PLATE	2 - 8d (TOENAILED)
BLOCKING TO SILL / TOP PLATE	3 - 16d (TOENAILED)	BLOCKING TO RAFTER	2 - 8d EACH END
LEDGER STRIP TO BEAM	3 - 16d (FACE NAILED, PER JOIST)	BAND JOIST TO RAFTER	2 - 16d EACH END
JOIST ON LEDGER TO BEAM	3 - 8d (TOENAILED)	RAFTER-TO-RAFTER TENSION STRAP OVER RIDGE BEAM (SLOPE > 6:12)	SIMPSON LSTA-9 OR EQUAL (ALT: 1x COLLAR TIE IN UPPER 1/3 OF RAFTER SPAN WITH 4 - 10d EA. SIDE)

FASTENER SCHEDULE



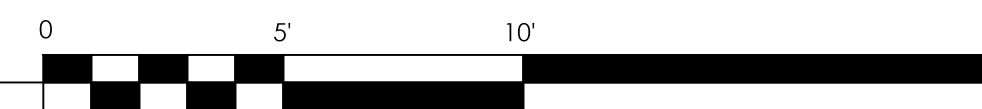
PART PLAN
LOW ROOF

RAFTERS NOT LABELED:
2X8 @ 16

NOTE:
(E) WALL SHEATHING 1/2" ASSUMED THICKNESS. ASSUMED NAILING
12" O.C. (FIELD), 6" O.C. (EDGES). ADD THICKNESS / NAILS AS
REQUIRED TO MEET THESE CRITERIA. TYP. ALL EXTERIOR WALLS.

NOTE:
ALL FRAMING NOT LABELED TO BE 2X10. TYP.
ALL POSTS NOT LABELED TO BE (2) 2X4 OR (2) 2X6 (MATCH WALL STUD DEPTH)
ALL HEADERS TO BEAR ON (2) JACK STUDS + (1) KING STUD, UNLESS NOTED OTHERWISE.

SECOND FLOOR FRAMING PLAN



1
SCALE: 1/4" = 1'-0"

ISSUE	DATE
100% CONSTRUCTION DOCUMENTS	07.14.2014
COORDINATION	04.30.2014
DATE: 04.30.2014	
SCALE: AS NOTED	

SECOND FLOOR
FRAMING PLAN

S1.2