

# 12RLS2 Submittal

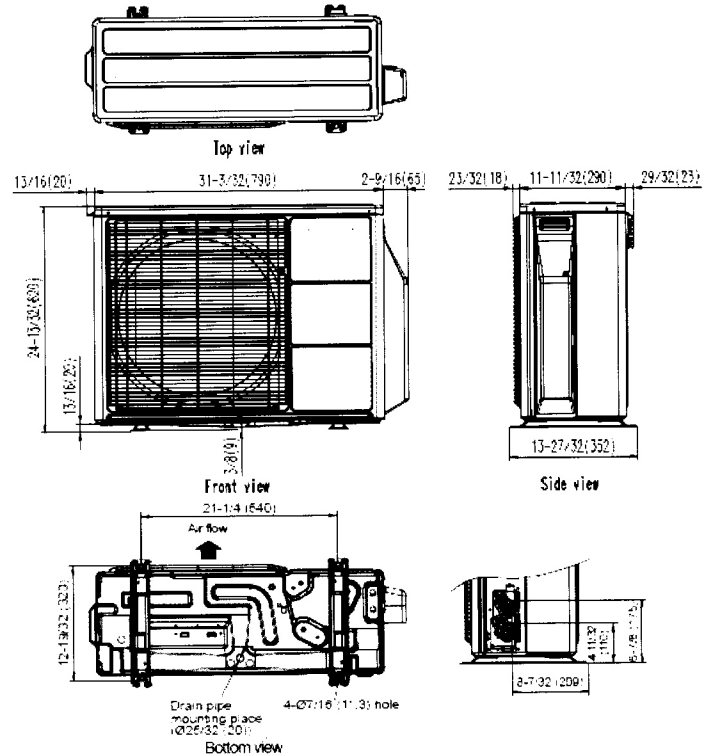
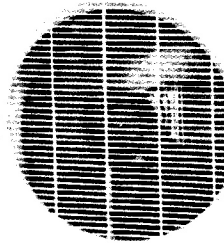


## AOU12RLS2, ASU12RLS2 Inverter Driven Heat Pump

Job Name: Jack Soley  
 Location: 136 Island Ave, Peaks Island  
 Engineer: n/a  
 Submitted to: City of Portland  
 Submitted by: Goggin Energy  
 Reference: n/a

Approval: \_\_\_\_\_  
 Date: \_\_\_\_\_  
 Construction: \_\_\_\_\_  
 Unit #: \_\_\_\_\_  
 Drawing #: \_\_\_\_\_

<b>Outdoor Unit Power</b>	208-230VAC-1Ph-60Hz	
Available Voltage Range	187-253VAC	
Fuse Size, Max.	20A	
<b>NCA</b>	10.5A	
<b>Compressor</b>	Inverter Driven Variable Speed DC Rotary	
No. used	1	
Output	850W	
Lubricant Oil	POE (RB68)	
<b>Fan type</b>	Propeller	
Motor Output	115W	
<b>Airflow Rate</b>	Cooling/Heating (High)	1206 / 1082CFM
<b>Refrigerant</b>	R410A	
Outdoor Unit	2lbs 10oz	
Control	Electronic Expansion Valve	
C.D. Discharge	(in)	1/4"(Flare)
C.D Suction	(in)	3/8"(Flare)
<b>Dimensions</b>	H x W x D	
Uncrated	(in)	24-1/2 x 31-3/32 x 11-11/32
	(mm)	(620 x 790 x 290)
Crated	(in)	28-1/16 x 37-7/32 x 15-9/16
	(mm)	(713 x 945 x 395)
<b>Weight</b>	Outdoor	
Net	84lbs (38kg)	
Gross Shipping	93lbs (42kg)	
<b>Cooling</b>		
Rated Capacity	12,000BTU/h	
Min-Max Capacity	3,100~13,600BTU/h	
Rated Power Input	3.52kw	
Max. Power Input	4.00kw	
SEER	25	
<b>Outdoor Sound Rating</b>	49dB	
<b>Heating</b>		
Rated Capacity	16,000BTU/h	
Min-Max Capacity	3,100~22,100BTU/h	
Rated Power Input	4.69kw	
Max. Power Input	6.5k0w	
HSPF	12	
<b>Outdoor Sound Rating</b>	50dB	
<b>Piping Lengths</b>		
Max. Piping Length (Total)	66ft	
Max. Pipe Height Difference	49ft	
Connection method	(Flared)	
<b>Operating Range</b>		
Cooling	14°F~115°F DB	
Heating	-5°F~75°F DB	



Fujitsu General America, Inc.  
 Fairfield, NJ 07004  
 Toll Free: 1-888-888-3424  
 Fax: (973) 836-0447  
 www.fujitsugeneral.com

Fujitsu products are subject to continuous improvements. Fujitsu reserves the right to modify product design, specifications and information in this data sheet without notice and without incurring any obligations.

Note: Specifications are based on the following conditions.

Power source of specifications : 230V

Cooling: Indoor temperature of 80°F(26.67°C)DB / 67°F(19.44°C)WB, and outdoor temperature of 95°F(35°C)DB/75°F(23.89°C)WB.

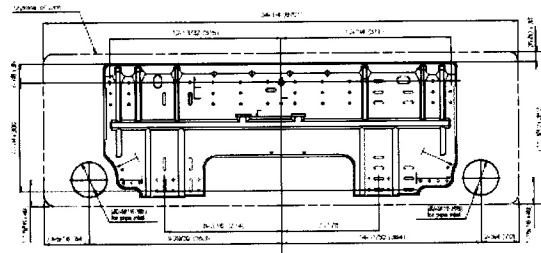
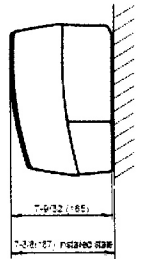
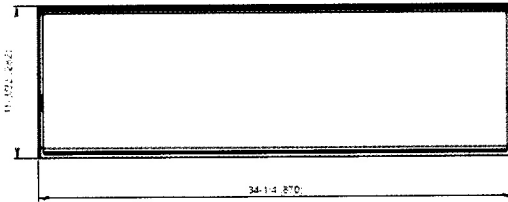
Heating: Indoor temperature of 70°F(21.11°C)DB / 60°F(15.56°C)WB, and outdoor temperature of 47°F(8.33°C)DB/43°F(6.11°C)WB.

Pipe length : 24ft. 7in.(7.5m), Height difference : 0 ft.(0m) [Outdoor unit - Indoor unit]





<b>Indoor Unit Power</b>	208-230/VAC-1Ph-60Hz	
<b>Available Voltage Range</b>	187-253VAC	
<b>Fan type</b>	Cross flow	
<b>Motor Output</b>	29W	
<b>MCA</b>	0.4A	
<b>Sound Pressure Level</b>		
Cooling	Lo-Hi	21-43dB
Heating	Lo-Hi	21-43dB
<b>Airflow rate</b>		
Cooling	Lo-Hi	194-500dB
Heating	Lo-Hi	194-500dB
<b>Dimensions</b>	H x W x D	
Uncrated	(in)	11-3/32 x 34-1/4 x 7-9/32
	(mm)	(282 x 870 x 185)
Crated	(in)	9-23/32 x 36-7/32 x 14-11/16
	(mm)	(247 x 920 x 373)
<b>Weight</b>	Indoor	
Net	21lbs (9.5kg)	
Gross Shipping	27lbs (12kg)	



Fujitsu General America, Inc.  
Fairfield, NJ 07004  
Toll Free: 1-888-888-3424  
Fax: (973) 836-0447  
www.fujitsugeneral.com

Fujitsu products are subject to continuous improvements. Fujitsu reserves the right to modify product design, specifications and information in this data sheet without notice and without incurring any obligations.

