

Rachel Conly
Architectural Design

26 Sterling Street
Peaks Island, Maine 04108
207.766.5625

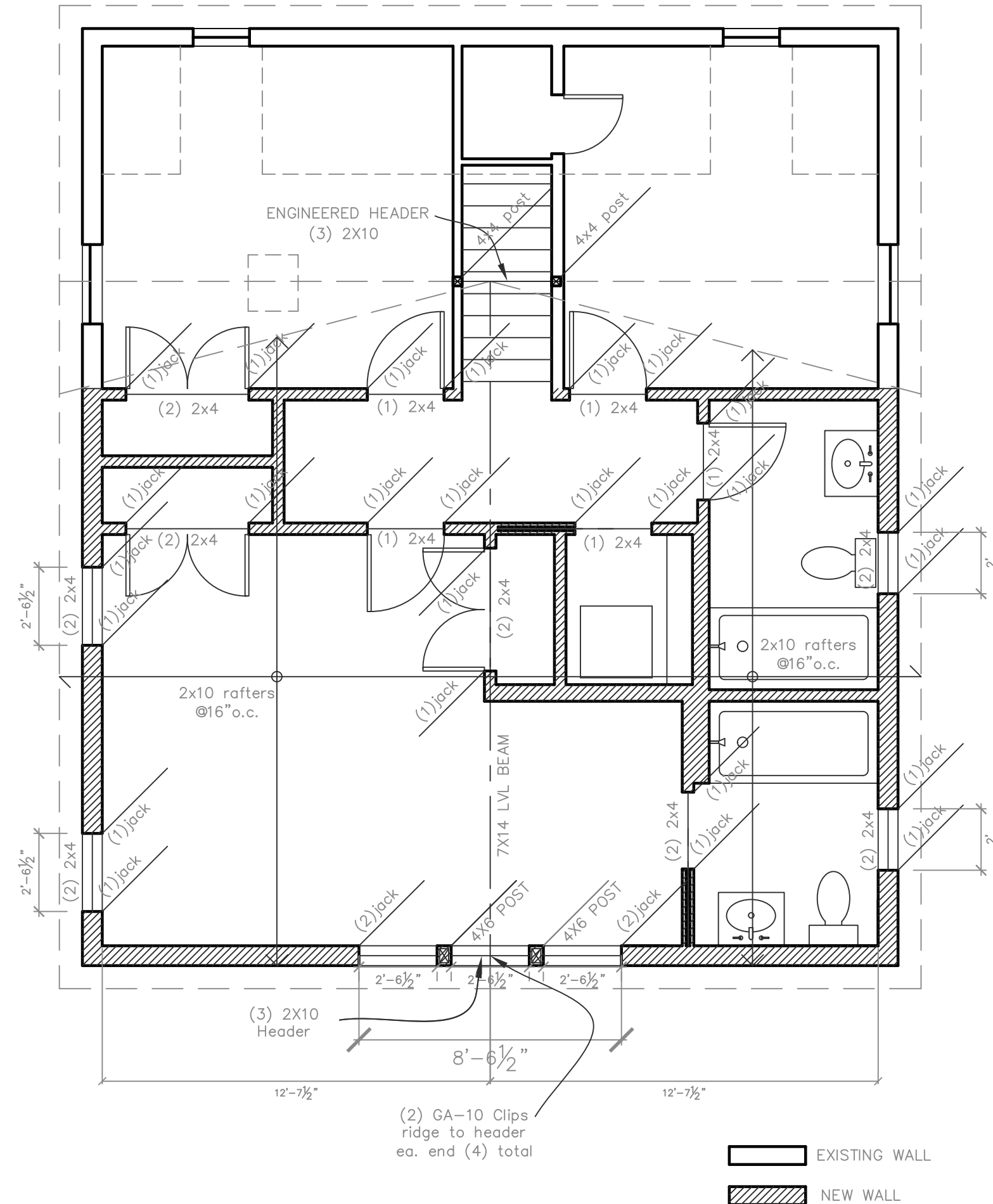
**Proposed
Roof Framing
Plan**

PROJECT
Cityview LLC
61 Upper A St.
Peaks Island, ME.
04108

DATE 11.29.13	REVISED 01.09.14
SCALE 1/4"=1'-0"	DRAWN BY Harvey

NOTES

FASTENER SCHEDULE	
SILL PLATE TO FOUNDATION	1/2" ANCHOR BOLT @ 36" O.C. W/ 3" PLATE WASHER; 9" MIN. EMBEDMENT
ROOF SHEATHING	8d @ 6" O.C. EDGE / 12" O.C. FIELD (TYPICAL PANELS) 8d @ 6" O.C. EDGE / 6" O.C. FIELD (PERIMETER PANELS)
WALL SHEATHING	8d @ 6" O.C. EDGE / 12" O.C. FIELD
FLOOR SHEATHING	12d RING OR SPIRAL NAILS @ 6" O.C. EDGE / 12" O.C. FIELD
POST BASES TO CONCRETE	SIMPSON TYPE AB
POST CAPS	SIMPSON BC OR LC (MATCH POST SIZE)
JOIST ON SILL, TOP PLATE, OR GIRDER	SIMPSON LUS HANGER OR 4 - 8d (TOENAILED) WHEN JOIST BEARS ON SUPPORT
BRIDGING / BLOCKING TO JOIST	2 - 8d (TOENAILED)
BLOCKING TO SILL / TOP PLATE	3 - 16d (TOENAILED)
LEADER STRIP TO BEAM	3 - 16d (FACE-NAILED, PER JOIST)
JOIST ON LEADER TO BEAM	3 - 8d (TOENAILED)
BAND / RIM JOIST TO JOIST	3 - 16d (ENGINAILED)
RIM JOIST TO SILL / TOP PLATE	2 - 16d PER FOOT
TOP PLATE TO TOP PLATE	2 - 16d PER FOOT
TOP PLATES AT INTERSECTION	4 - 16d EACH SIDE
STUD TO STUD	1 - 16d @ 12" O.C.
HEADER TO HEADER	16d @ 8" O.C. ALONG EDGES
TOP OR BOTTOM PLATE TO STUD	2 - 16d
BOTTOM PLATE TO JOIST OR BLOCKING	2 - 16d PER FOOT
RAFTER TO TOP PLATE	SIMPSON HI HURRICANE TIE
CEILING JOIST TO TOP PLATE	2 - 8d (TOENAILED)
BLOCKING TO RAFTER	2 - 8d EACH END
BAND JOIST TO RAFTER	2 - 16d EACH END
SLOPED/SKEWED RAFTER HANGERS AT RIDGE/HIP BEAMS	SIMPSON LSU



A Proposed Roof Framing
1/4"=1'-0"

