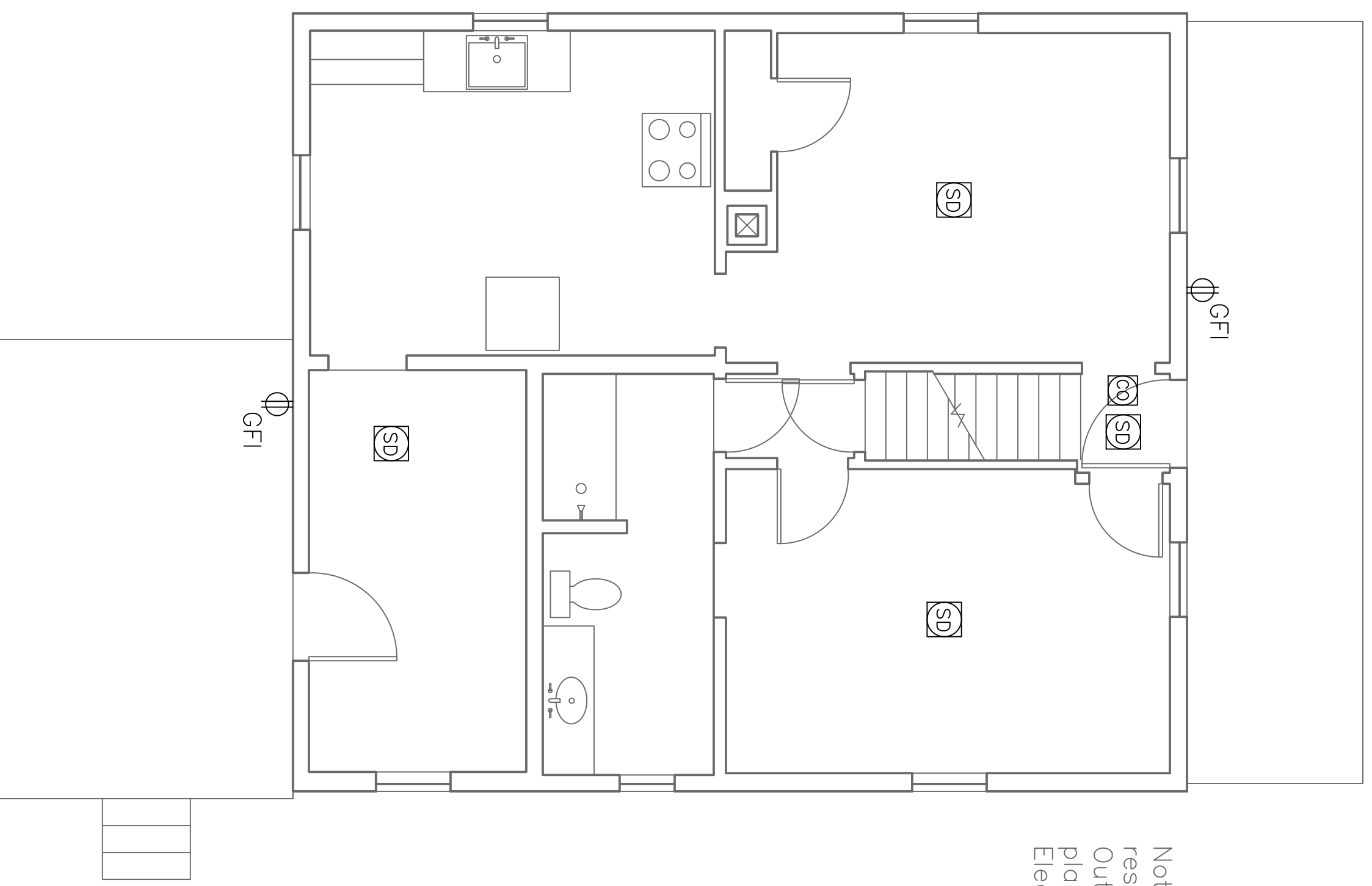
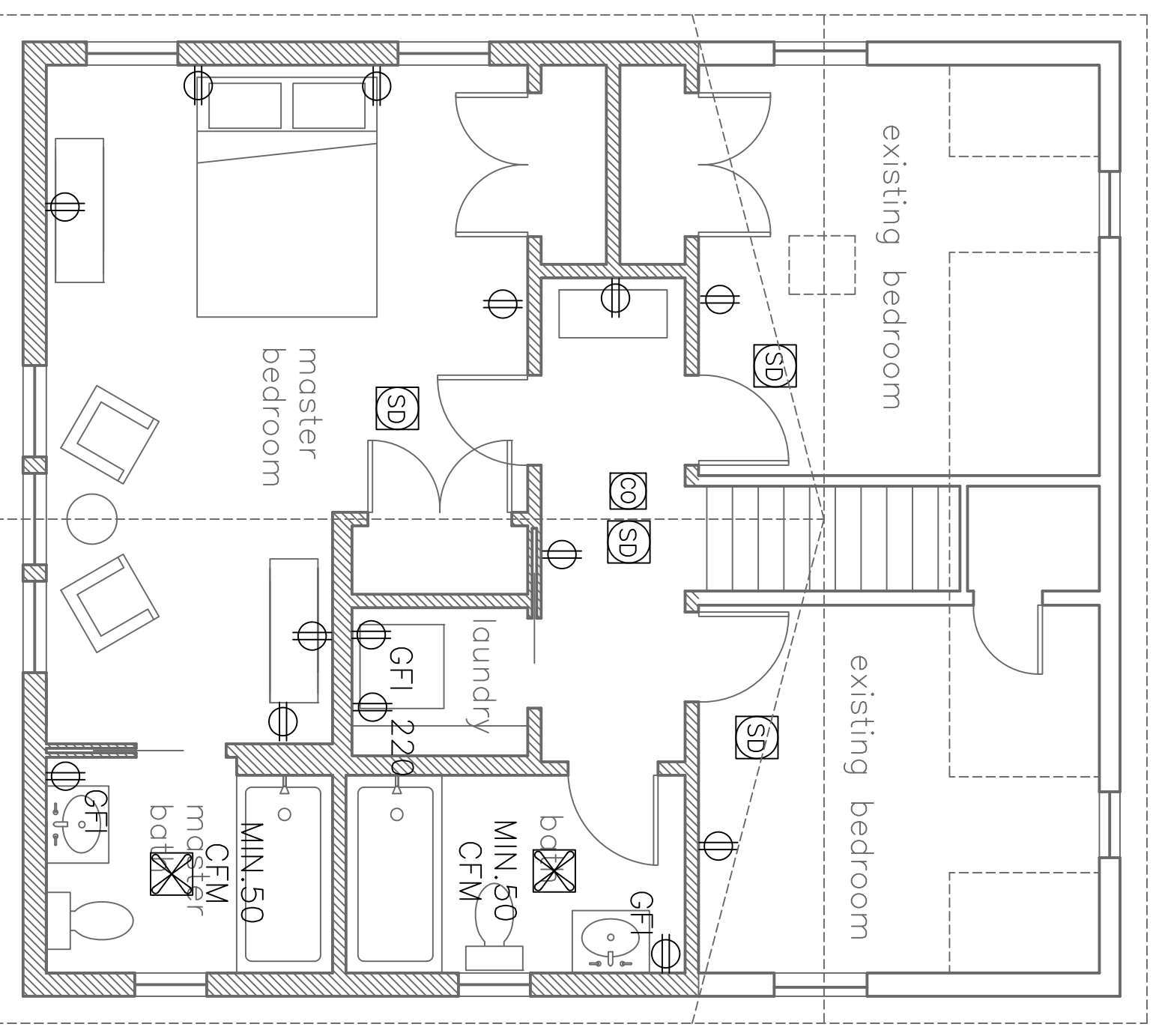
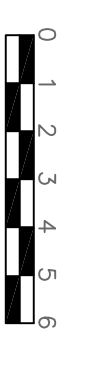


**Rachel Conly**  
 Architectural Design  
 26 Sterling Street  
 Peaks Island, Maine 04108  
 207.766.5625

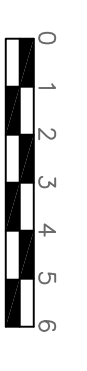
Notes: Lighting plan is responsibility of Electrician. Outlet quantity and placement at discretion of Electrician — to code



**A** Proposed First Floor Power  
 1/4" = 1'-0"



**B** Proposed Second Floor Power  
 1/4" = 1'-0"



EXISTING WALL  
 NEW WALL

**Proposed Power**

PROJECT  
 Cityview LLC  
 61 Upper A St.  
 Peaks Island, ME.  
 04108

DATE 11.29.13  
 SCALE 1/4" = 1'-0"  
 DRAWN BY Harvey

NOTES

⊕	duplex	○—○	undercounter
⊕	ground-fault circuit interrupter	⊕	ceiling fan / integral light
⊕	220 volt	⊕	ceiling fan
⊕	switch	⊕	phone jack
⊕	3-way switch	⊕	DSL
⊕	dimmer switch	⊕	CABLE
⊕	smoke detector	⊕	OUT 5
⊕	minimum 50 dfm wet fan	⊕	central vacuum
⊕	MIN.50 CFM	⊕	compact fluorescent recessed can
⊕	ceiling mount light fixture	⊕	recessed can light fixture
⊕	pendant light fixture	⊕	wall sconce light fixture
⊕	recessed can light fixture	⊕	wet location wall sconce light fixture
⊕	recessed can light fixture	⊕	troff lighting
⊕	recessed can light fixture	⊕	fluorescent hoodly switched

