

**SUBMITTAL DATA: MSZ-FE12NA & MUZ-FE12NA**
**12,000 BTU/H WALL-MOUNTED HEAT PUMP SYSTEM**

Job Name: _____	Location: _____	Date: _____
Purchaser: _____	Engineer: _____	
Submitted to: _____	For <input type="checkbox"/> Reference <input type="checkbox"/> Approval <input type="checkbox"/> Construction	
Unit Designation: _____	Schedule No.: _____	

**GENERAL FEATURES**

- Highly energy-efficient system that features 92% heating capacity at 5°F, 75% at -4°F, and 58% at -13°F
- Updated sleek, compact indoor unit design
- Includes Standard, Platinum Deodorizing, and Anti-allergy Enzyme filters for a complete air purifying system
- "Powerful Mode" function permits system to temporarily run at a lower/higher temperature with an increased fan speed, which quickly brings the room to the optimum comfort level
- Integrated i-see Sensor automatically adjusts the unit's operation according to temperature differences detected between the floor and the intake air, ensuring optimum comfort and energy usage
- Wireless remote controller
- Base heater is available as an option
- Limited warranty: five years on parts and defects and seven years on compressors

**OPTIONAL ACCESSORIES**
**Outdoor Unit**

- Base Heater (MAC-640BH-U)
- Drain Socket (MAC-851DS)

**Indoor Unit**

- M-NET Control Adapter (MAC-399IF)
- MA Contact Terminal Interface (MAC-397IF)
- Wired Remote Controller (PAR-21MAA; Requires MAC-3971F)
- Condensate Pump (SI3100-230; 230V)
- Replacement Platinum Deodorizing Filter (MAC-308FT)
- Replacement Anti-allergy Enzyme Filter (MAC-418FT; MERV 8)

**Cooling\***

Rated Capacity . . . . . 12,000 Btu/h  
 Minimum Capacity . . . . . 2,800 Btu/h  
 SEER . . . . . 23.0 Btu/h/W  
 Total Input . . . . . 930 W

**Heating at 47° F\***

Rated Capacity . . . . . 13,600 Btu/h  
 Minimum Capacity . . . . . 3,000 Btu/h  
 HSPF . . . . . 10.6 Btu/h/W  
 Total Input . . . . . 950 W

**Heating at 17° F\***

Rated Capacity . . . . . 8,300 Btu/h  
 Rated Total Input . . . . . 800 W  
 Maximum Capacity . . . . . 13,600 Btu/h  
 Maximum Total Input . . . . . 1,780 W

\* Rating Conditions (Cooling) - Indoor: 80°F (27°C) DB, 67°F (19°C) WB; Outdoor: 95°F (35°C) DB, 75°F (24°C) WB.  
 (Heating at 47°F) - Indoor: 70°F (21°C) DB, 60°F (16°C) WB; Outdoor: 47°F (8°C) DB, 43°F (6°C) WB.  
 (Heating at 17°F) - Indoor: 70°F (21°C) DB, 60°F (16°C) WB; Outdoor: 17°F (-8°C) DB, 15°F (-9°C) WB.

**Heating at 5° F**

Maximum Capacity . . . . . 12,507 Btu/h

**Electrical Requirements**

Power Supply . . . . . 208 / 230V, 1-Phase, 60 Hz  
 Breaker Size . . . . . 15 A

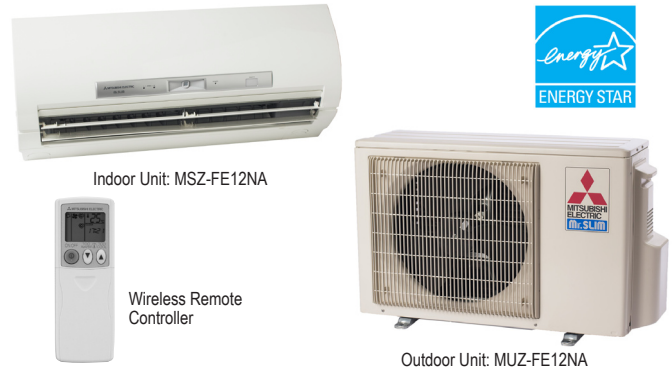
**Voltage**

Indoor - Outdoor S1-S2 . . . . . AC 208 / 230V  
 Indoor - Outdoor S2-S3 . . . . . DC 12-24V  
 Wireless Remote Controller . . . . . DC

**OPERATING RANGE**

	Indoor Intake Air Temp.	Outdoor Intake Air Temp.
Cooling	Maximum 90°F (32°C) DB, 73°F (23°C) WB	115°F (46°C) DB
	Minimum 67°F (19°C) DB, 57°F (14°C) WB	14°F (-10°C) DB
Heating	Maximum 80°F (27°C) DB, 67°F (19°C) WB	75°F (24°C) DB, 65°F (18°C) WB
	Minimum 70°F (21°C) DB, 60°F (16°C) WB	-13°F (-25°C) DB, -15°F (-26°C) WB**

\*\* System cuts out at -18°F (-28°C) to avoid thermostat error, but recovers from cutout operation and automatically restarts at -13°F (-25°C).


**Indoor Unit**

MCA . . . . . 1 A  
 Fan Motor . . . . . 0.76 F.L.A.  
 Airflow  
 Cooling (Lo - Med - Hi - Powerful) . . . 162 - 226 - 381 - 410 Dry CFM  
 144 - 202 - 350 - 367 Wet CFM  
 Heating (Lo - Med - Hi - Powerful) . . . 166 - 240 - 399 - 420 Dry CFM  
 Sound Pressure Level  
 Cooling (Lo - Med - Hi - Powerful) . . . . . 22 - 33 - 43 - 45 dB(A)  
 Heating (Lo - Med - Hi - Powerful) . . . . . 22 - 33 - 43 - 44 dB(A)

DIMENSIONS	UNIT INCHES / MM
W	31-7/16 / 799
D	10-1/8 / 257
H	11-5/8 / 295

Weight . . . . . 27 lbs. / 12 kg  
 External Finish . . . . . Munsell No. 1.0Y 9.2 / 0.2  
 Field Drainpipe Size O.D. . . . . 5/8" / 15.88 mm  
 Remote Controller . . . . . Wireless

**Outdoor Unit**

Compressor . . . . . DC Inverter-driven Twin Rotary  
 MCA . . . . . 12 A  
 Fan Motor . . . . . 0.56 F.L.A.  
 Sound Pressure Level  
 Cooling . . . . . 48 dB(A)  
 Heating . . . . . 49 dB(A)

DIMENSIONS	INCHES / MM
W	31-1/2 / 800
D	11-1/4 / 286
H	21-5/8 / 549

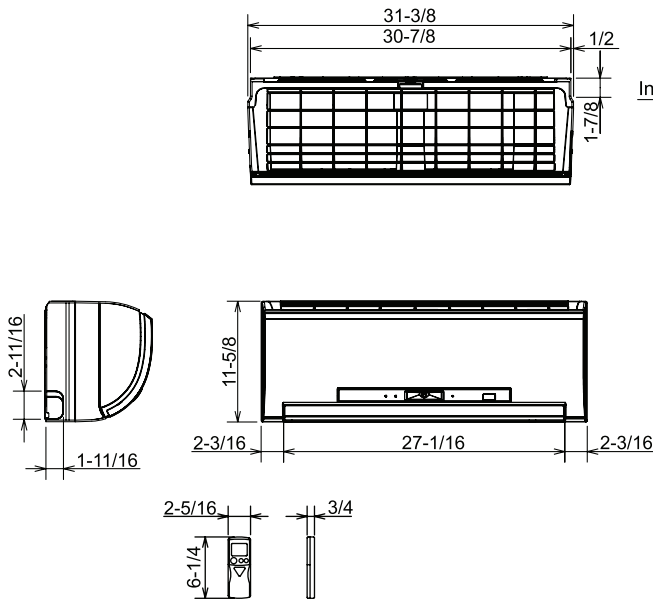
Weight . . . . . 80 lbs. / 36 kg  
 External Finish . . . . . Munsell No. 3.0Y 7.8 / 1.1  
 Refrigerant Type . . . . . R410A  
 Refrigerant Pipe Size O.D.  
 Gas Side . . . . . 3/8" / 9.52 mm  
 Liquid Side . . . . . 1/4" / 6.35 mm  
 Max. Refrigerant Pipe Length . . . . . 65' / 20 m  
 Max. Refrigerant Pipe Height Difference . . . . . 40' / 12 m  
 Connection Method . . . . . Flared



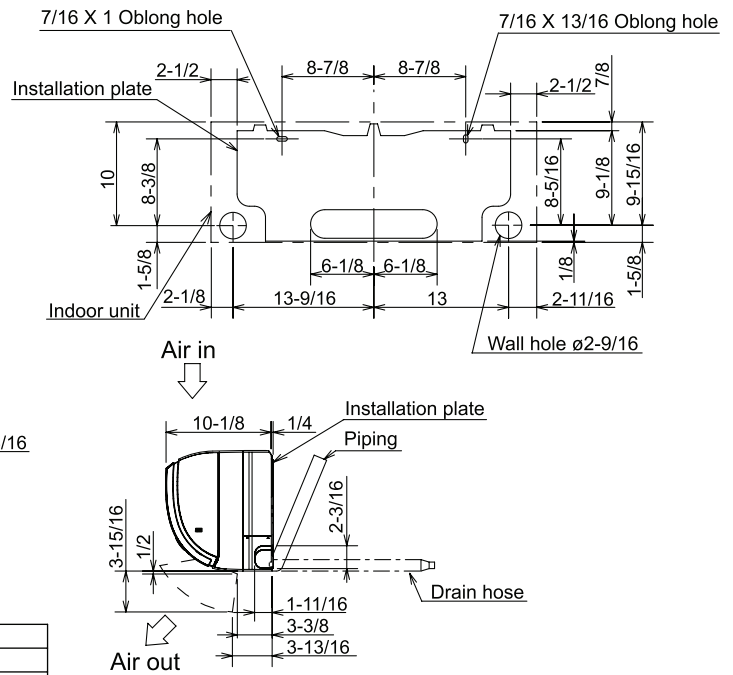
# DIMENSIONS: MSZ-FE12NA & MUZ-FE12NA

## MSZ-FE12NA

Unit: inch

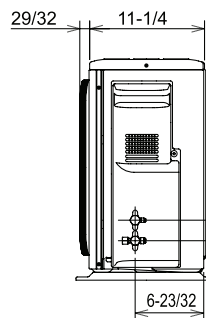
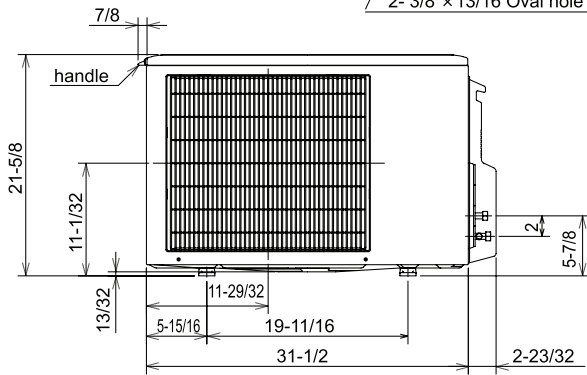
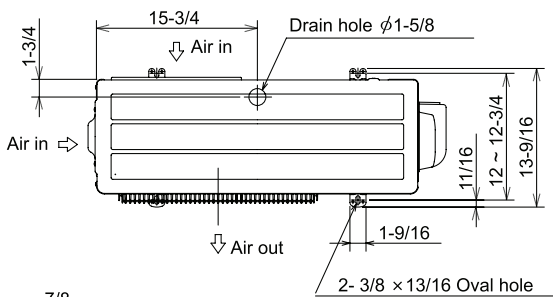


Insulation	ø1-3/8 O.D
Piping	
Liquid line	ø1/4 19-11/16 (Flared connection ø1/4)
Gas line	ø3/8 16-15/16 (Flared connection ø3/8)
Drain hose	Insulation ø1-1/8 O.D Connected part ø5/8 O.D

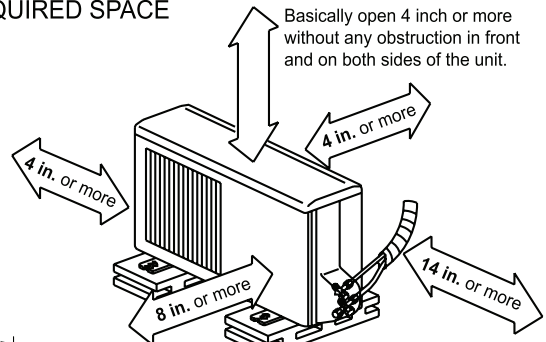


## MUZ-FE12NA

Unit: inch



### REQUIRED SPACE



Open two sides of left, right, or rear side.

Liquid pipe : 1/4 (flared)  
Gas pipe : 3/8 (flared)



**HVAC Advanced Products Division**  
3400 Lawrenceville Suwanee Rd  
Suwanee, GA 30024  
Tele: 678-376-2900 • Fax: 800-889-9904  
Toll Free: 800-433-4822 (#3)  
www.mehvac.com  
Specifications are subject to change without notice.