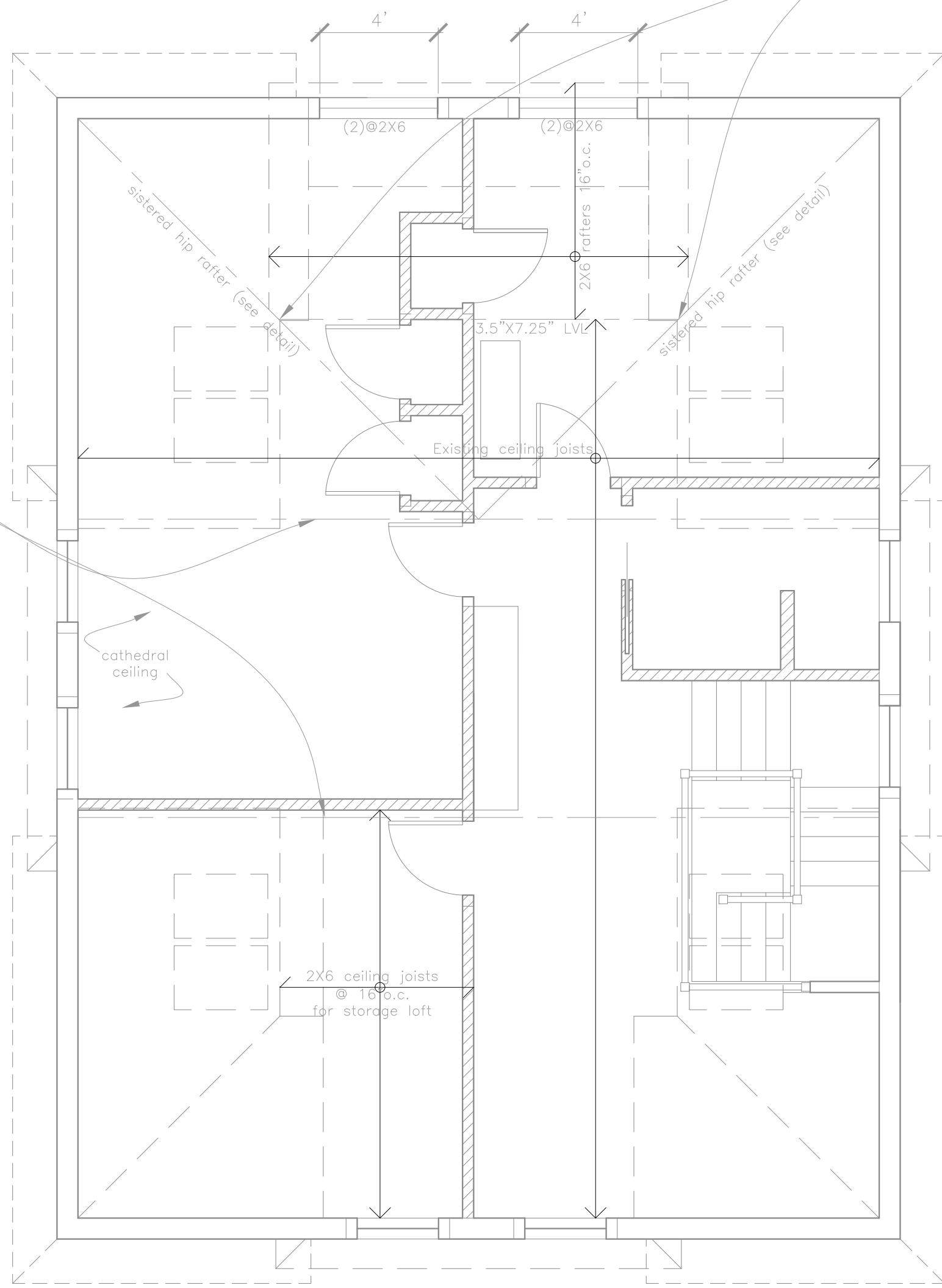


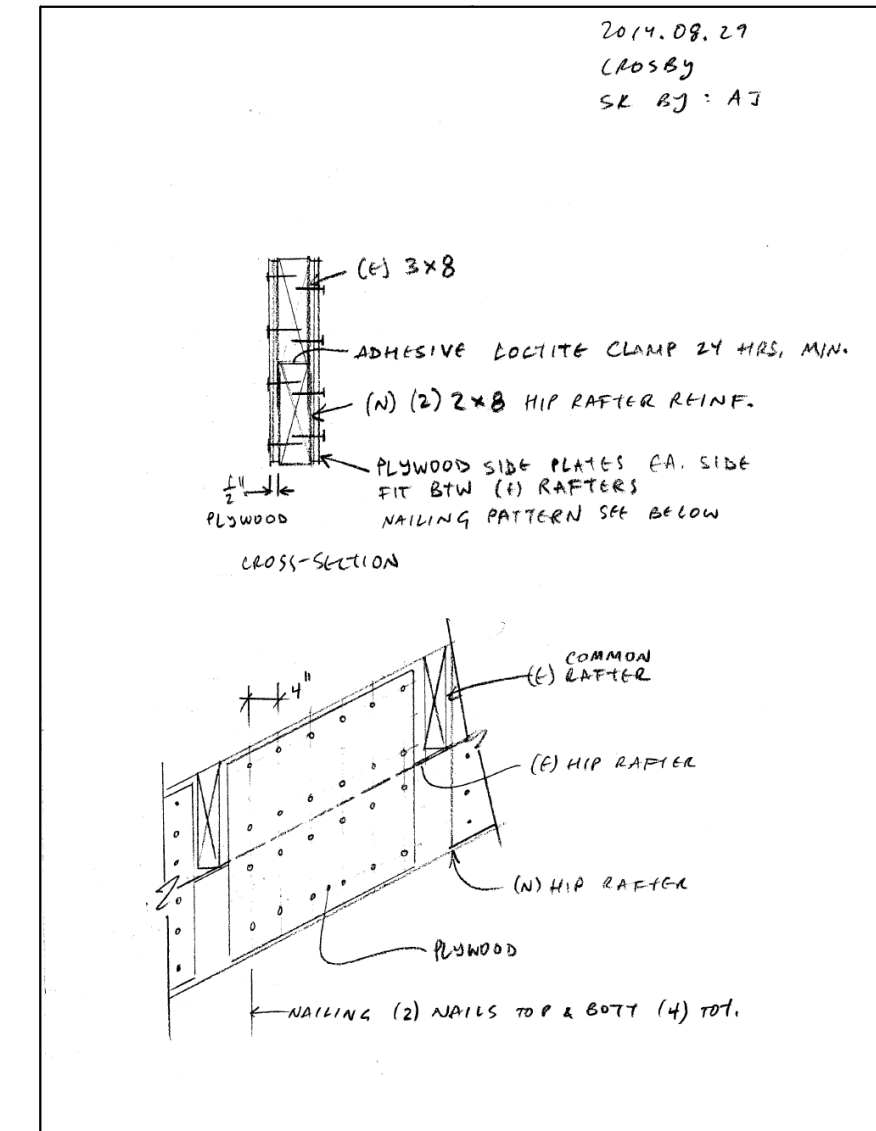


Hang dormer roof girder from sistered hip rafters with Simpson LSSU410



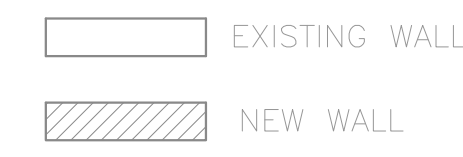
Reinforce existing trusses:
Add continuous 2X6 to bottom chords.
Tie to existing rafters with (8) 3" Timberlok screws.
(If continuous 2X6 lengths unavailable, then splice can be made with two LSTA12 straps (top and bottom) of each chord.)

Hip Rafter Reinforcement Detail (not to scale):

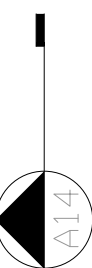


FASTENER SCHEDULE	
SILL PLATE TO FOUNDATION	1/2" ANCHOR BOLT @ 36" O.C. W/ 3" PLATE WASHER; 9" MIN. EMBEDMENT
ROOF SHEATHING	8d @ 6" O.C. EDGE / 12" O.C. FIELD (TYPICAL PANELS) 8d @ 6" O.C. EDGE / 6" O.C. FIELD (PERIMETER PANELS)
WALL SHEATHING	8d @ 6" O.C. EDGE / 12" O.C. FIELD
FLOOR SHEATHING	12d RING OR SPIRAL NAILS @ 6" O.C. EDGE / 12" O.C. FIELD
POST BASES TO CONCRETE	SIMPSON TYPE AB
POST CAPS	SIMPSON BC OR LC (MATCH POST SIZE)
JOIST ON SILL, TOP PLATE, OR GIRDER	SIMPSON LUS HANGER OR 4 - 8d (TOENAILED) WHEN JOIST BEARS ON SUPPORT
BRIDGING / BLOCKING TO JOIST	2 - 8d (TOENAILED)
BLOCKING TO SILL / TOP PLATE	3 - 16d (TOENAILED)
LEDGER STRIP TO BEAM	3 - 16d (FACE NAILED, PER JOIST)
JOIST ON LEDGER TO BEAM	3 - 8d (TOENAILED)
BAND / RIM JOIST TO JOIST	3 - 16d (END NAILED)
RIM JOIST TO SILL / TOP PLATE	2 - 16d PER FOOT
TOP PLATE TO TOP PLATE	2 - 16d PER FOOT
TOP PLATES AT INTERSECTION	4 - 16d EACH SIDE
STUD TO STUD	1 - 16d @ 12" O.C.
HEADER TO HEADER	16d @ 8" O.C. ALONG EDGES
TOP OR BOTTOM PLATE TO STUD	2 - 16d
BOTTOM PLATE TO JOIST OR BLOCKING	2 - 16d PER FOOT
RAFTER TO TOP PLATE	SIMPSON H1 HURRICANE TIE
CEILING JOIST TO TOP PLATE	2 - 8d (TOENAILED)
BLOCKING TO RAFTER	2 - 8d EACH END
BAND JOIST TO RAFTER	2 - 16d EACH END
SLOPED/SKewed RAFTER HANGERS AT RIDGE/HIP BEAMS	SIMPSON LSU

NOTE:
(1) jack at each side of each door/window header, unless otherwise noted



A Proposed Roof Framing
1/4" = 1'-0"



Rachel Conly
Architectural Design

26 Sterling Street
Peaks Island, Maine 04108
207.766.5625

Proposed Roof Framing Plan



PROJECT
**Crosby Simmonds
Residence**

92 Central Avenue
Peaks Island, Me.
04108

DATE: 09.09.14
SCALE: 1/4" = 1'-0"
REVISED:
DRAWN BY: Rachel & Harvey

NOTES

S4