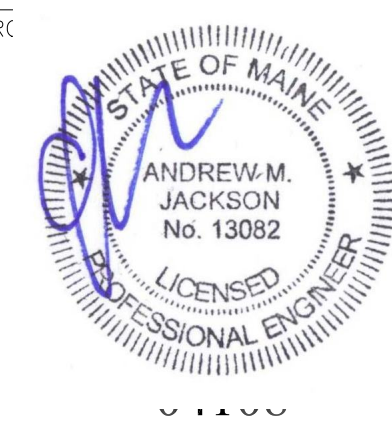


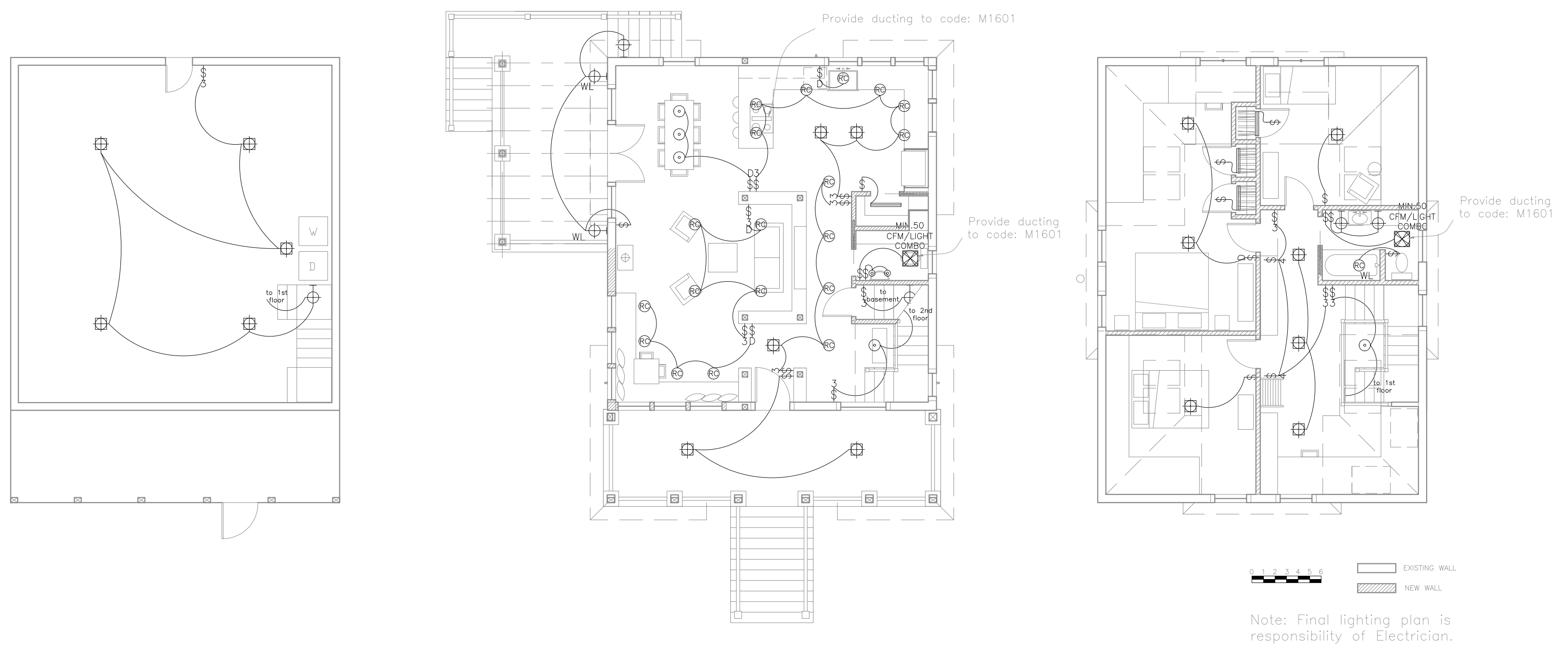
Rachel Conly
Architectural Design

26 Sterling Street
Peaks Island, Maine 04108
207.766.5625

**Proposed
Power Plans**



DATE	REVISED
09.09.14	
SCALE	DRAWN BY
1/8" = 1'-0"	Rachel & Harvey



A Proposed Basement Lighting
1/8" = 1'-0"

B Proposed First Floor Lighting
1/8" = 1'-0"

C Proposed Second Floor Lighting
1/8" = 1'-0"

NOTES

	duplex		undercounter
	ground-fault circuit interrupter		ceiling fan w/ integral light
	220 volt		ceiling fan
	switch		3-way switch
	dimmer switch		phone jack
	smoke detector		DSL
	minimum 50 cfm vent fan		CABLE
	ceiling mount light fixture		CAT 5
	pendant light fixture		central vacuum
	recessed can light fixture		compact fluorescent recessed can
	wall sconce light fixture		
	wet location wall sconce light fixture		
	trak lighting		
	fluorescent locally switched		