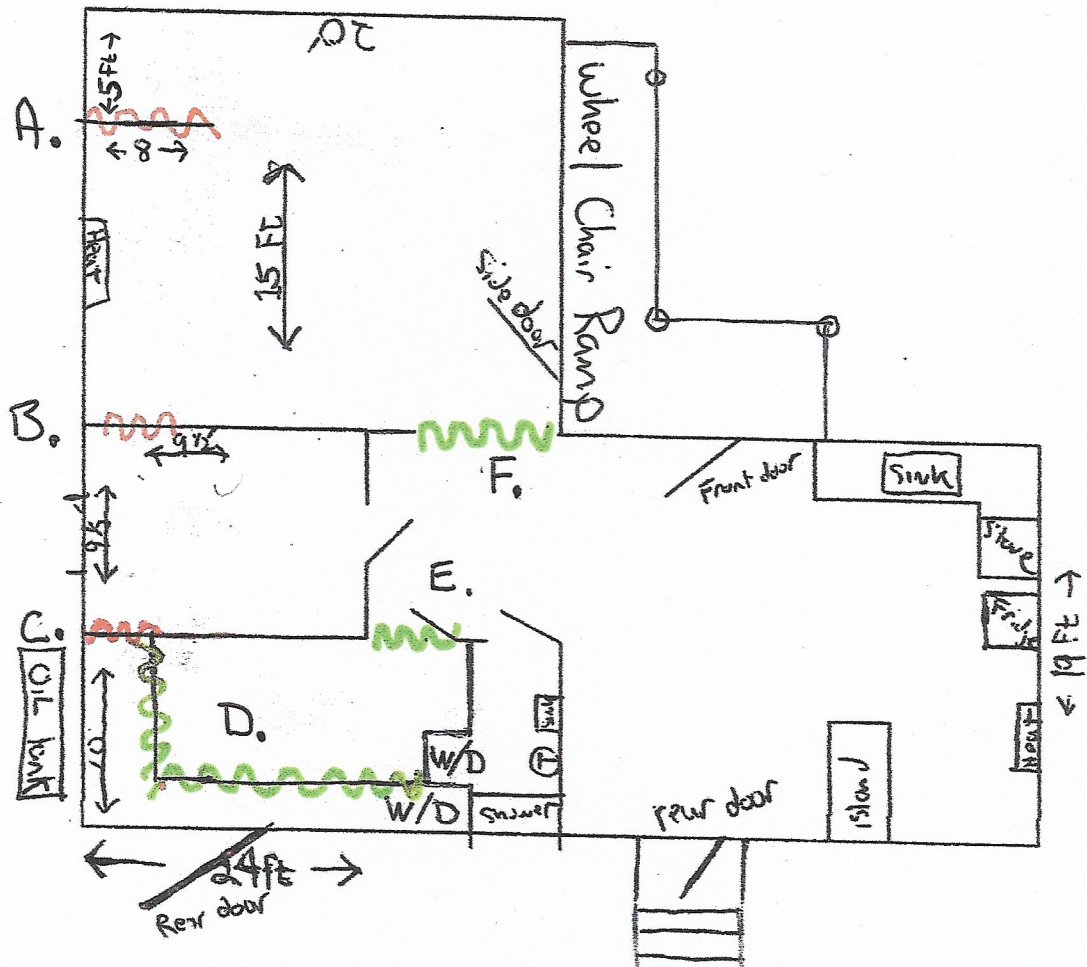


Front to Street

Construction Detail Construction & Demolition



1. **wavy red** - NON-load bearing Wall additions. 1/2 inch Sheetrock over 2x4 construction.
 - A. 8' partition wall (8' length x 8' height)
 - B. CLOSE opening creating private room.
 - C. CLOSE doorway creating private room.
2. **wavy green** - Demolition of NON-load bearing Walls.
 - D. Removal of bathroom walls + fixtures.
 - E. Return Entrance way to original opening.
 - F. Remove partition wall between two rooms.