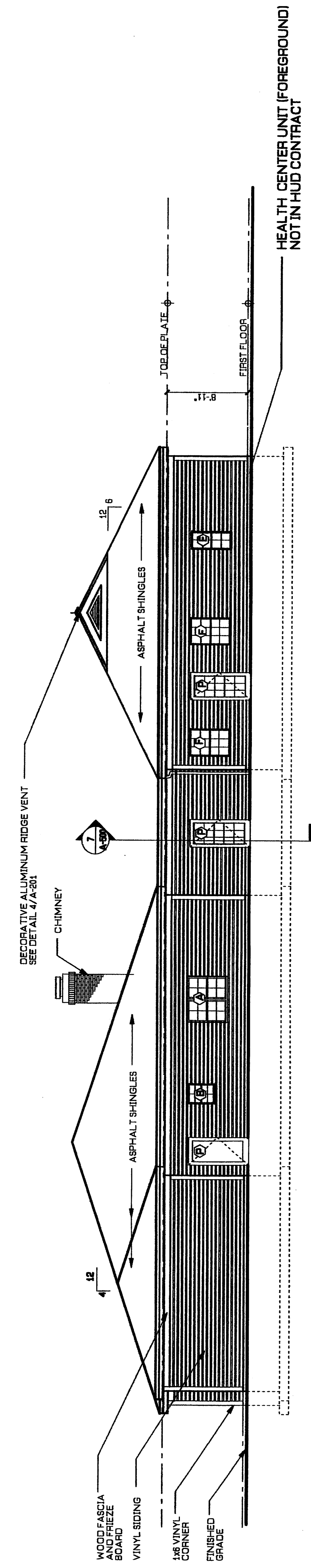


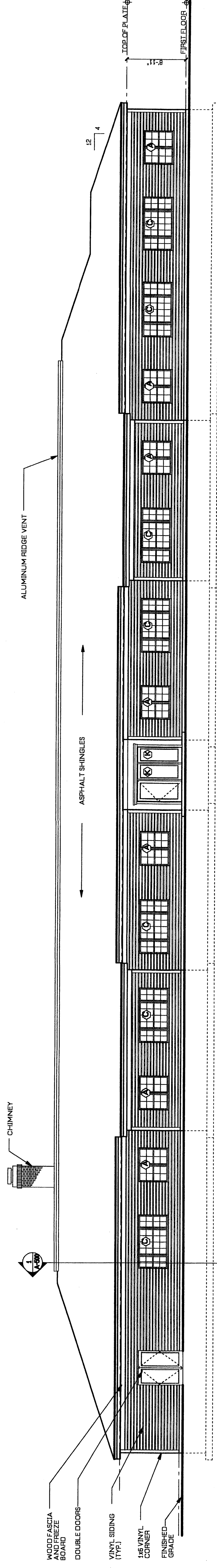
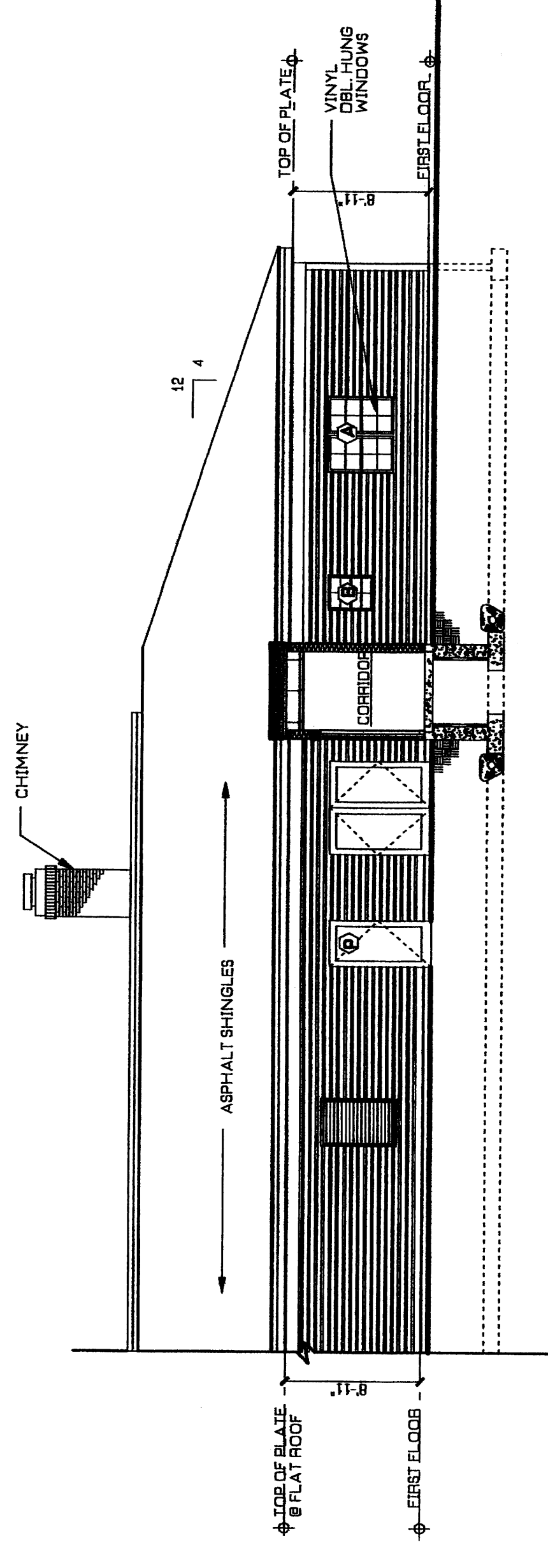
NORTH ELEVATION  
1/8" = 1'-0"



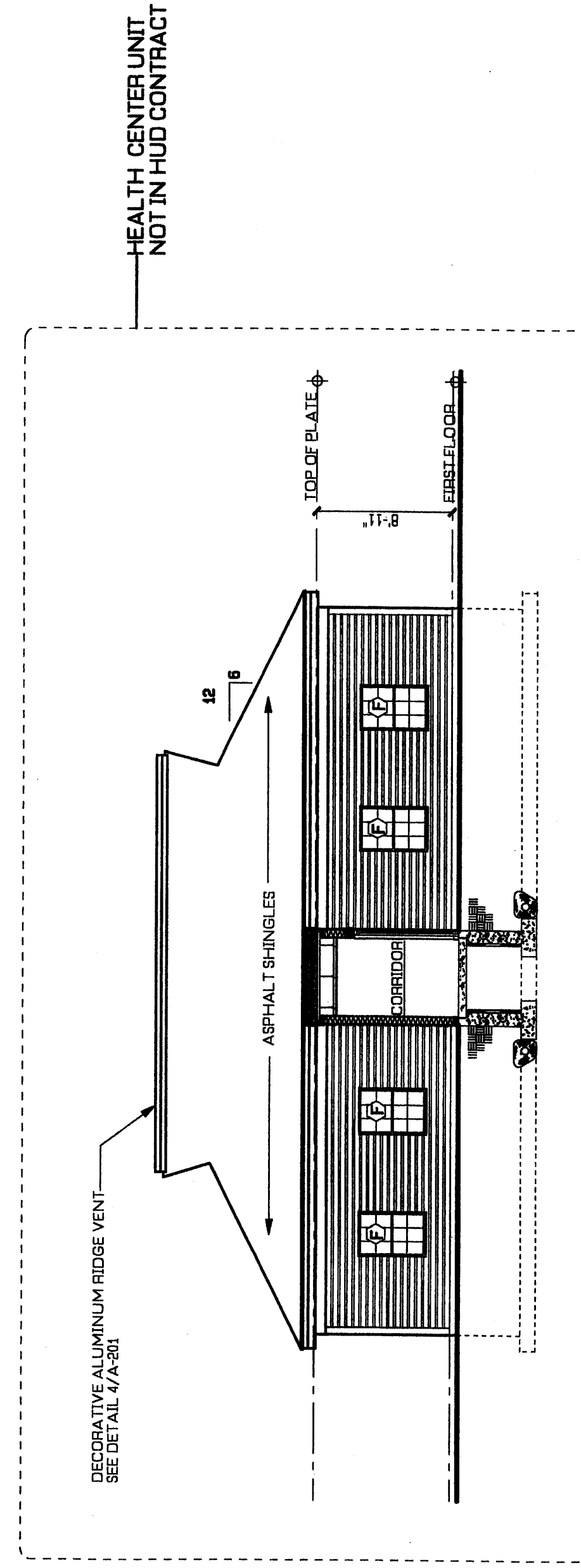
EAST ELEVATION  
1/8" = 1'-0"

HEALTH CENTER EAST ELEVATION

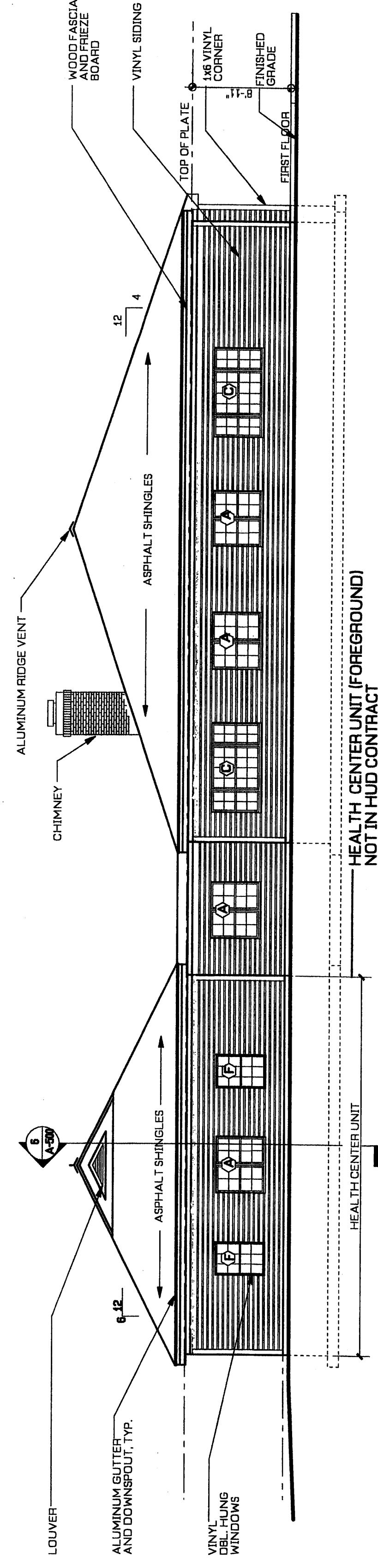
PARTIAL NORTH ELEVATION  
1/8" = 1'-0"



SOUTH ELEVATION  
1/8" = 1'-0"



HEALTH CENTER SOUTH ELEVATION  
1/8" = 1'-0"



WEST ELEVATION  
1/8" = 1'-0"

Revisions	No.	Date

Project  
**PEAKS ISLAND V.O.A.  
 SENIOR HOUSING FACILITY  
 & HEALTH CENTER**  
 H.U.D. Project # 024-EE058

Central Avenue  
 Peaks Island, Maine  
 Drawing Title

**ELEVATIONS**

Tsomides Associates  
 Architects and Planners  
 389 Edgely Street  
 Newton Upper Falls, MA 02464  
 (617) 555-4774  
 Fax: (617) 555-4785

DATE PLOTTED: 02/25/04  
 SCALE: 1/8" = 1'-0"  
 DRAWING NUMBER: A-400